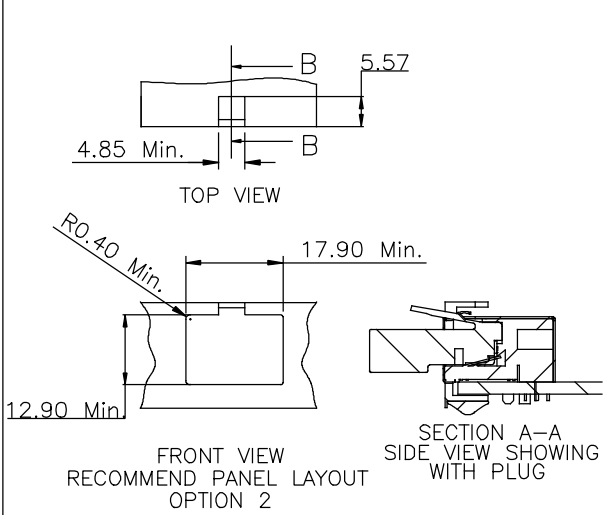
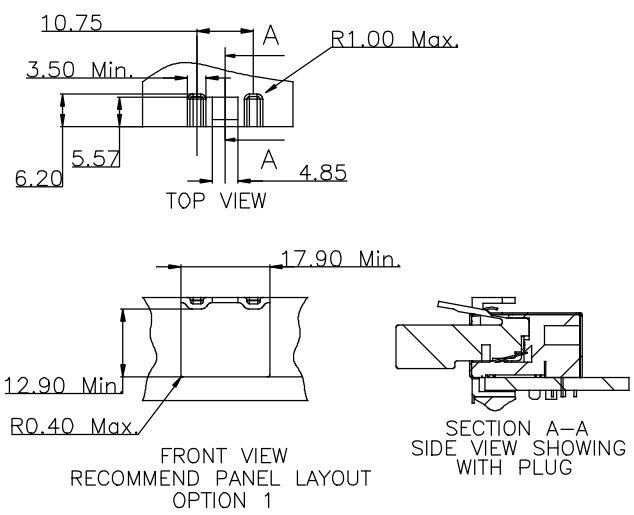


REVISIONS			
REV	ECN, ERN NO.	DATE	APPRD.
A	PROPOSAL DRAWING	FEB. 28,2015	L.CHAN

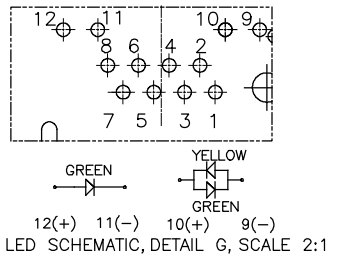
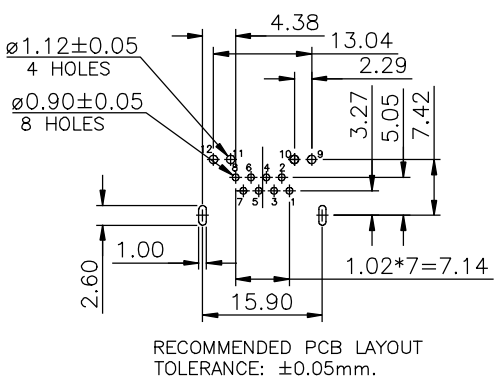
NOTES:
 ELECTRICAL:
 1. VOLTAGE RATING : 125 VAC.
 2. CURRENT RATING : 1.25 AMP.
 3. INSULATING RESISTANCE : 500 MEGOHMS MINIMUM.
 4. DIELECTRIC STRENGTH : 1000 VAC 60Hz, 1MIN.
 5. CATEGORY 6 CHARACTERISTIC:
 Frequency Near-End Crosstalk Return Loss Attenuation

MHz	dB, MIN.	dB, MIN.	dB, MAX.
1.0	75.0	30.0	0.1
4.0	75.0	30.0	0.1
8.0	75.0	30.0	0.1
10.0	74.0	30.0	0.1
16.0	69.9	30.0	0.1
20.0	68.0	30.0	0.1
25.0	66.0	30.0	0.1
31.25	64.1	30.0	0.11
62.5	58.1	28.1	0.16
100.0	54.0	24.0	0.20
200.0	48.0	18.0	0.28
250.0	46.0	16.0	0.32



MECHANICAL:
 1. SHIELD : STAINLESS STEEL, WITH TIN-DIP ON SOLDER TABS.
 2. HOUSING : HIGH TEMP THERMOPLASTIC, UL 94V-0.
 3. INSERT : HIGH TEMP THERMOPLASTIC UL 94V-0.
 4. PCB : FR-4.
 5. CONTACT : PHOSPHOR BRONZE.
 30u" SELECTIVE GOLD PLATING FOR MATING SURFACE,
 50u" NICKEL UNDERPLATE
 100u" MATTE TIN PLATING ON CONTACT SOLDER TAIL.

ENVIRONMENTAL:
 1. STORAGE : -40° TO +85°.
 2. OPERATION : -40° TO +85°.
 MATES WITH MODULAR PLUG CONFORMING TO FCC PART 68, SUBPART F.
 RECOMMENDED SOLDER PROCESS: WAVE SOLDER, PEAK TEMPERATURE 260° FOR 10 SECOND.



AMPHENOL PART NUMBER: RJE49-188-1XX1
 GOLD PLATING OPTION _____ REFER TO LED OPTIONS DRAWING P-RJE49-LEDS FOR ORDERING CODES
 1=6u" [0.15 MICRONS] GOLD PLATING
 2=15u" [0.38 MICRONS] GOLD PLATING
 3=30u" [0.76 MICRONS] GOLD PLATING
 4=50u" [1.27 MICRONS] GOLD PLATING

LED SPECIFICATIONS:
 FORWARD VOLTAGE: 2.2 VOLTS TYP
 REVERSE VOLTAGE: 5.0 VOLTS
 LUMINOUS INTENSITY: 4 mcd MIN. (AT IF =20mA)

UNLESS OTHERWISE SPECIFIED DIMENSION ARE IN mm FRACTION DECIMALS ANGLES		DRAWN JUSTIN.FENG DESIGNED JUSTIN.FENG CHECKED L.CHAN	DATE FEB28/2015 FEB28/2015 FEB28/2015	Amphenol Canada Corp.	
.X ±0.50 .XX ±0.30 .XXX ±0.10	X° ±3.0° .X° ±2.0° .XX° ±1.0°	I. E. APPRD. Q. A. APPRD. DWG. APPRD.	ENG. REL. NO. REF.	TITLE MODULAR JACK, SINGLE PORTS, 8 POSITIONS, 8 CONTACTS, SHIELDED WITH TOP & SIDE TABS, WITH LED, TAB UP, CAT6-RoHS COMPLIANT	
3rd ANGLE PROJECTION		DWG. C	DRAWING NO. P-RJE49-188-1XX1	DWG. SCALE 4/1	REV. A
DIMENSIONS ARE IN mm		CODE ID. NO. 03554	SHEET 1 OF 1		

THIS DOCUMENT CONTAINS PROPRIETARY INFORMATION AND SUCH INFORMATION MAY NOT BE DISCLOSED TO OTHERS FOR ANY PURPOSE OR USED FOR MANUFACTURING PURPOSES WITHOUT WRITTEN PERMISSION FROM AMPHENOL CANADA CORP.