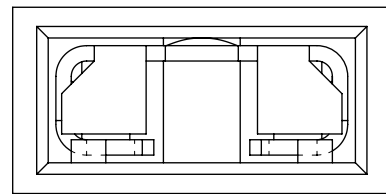
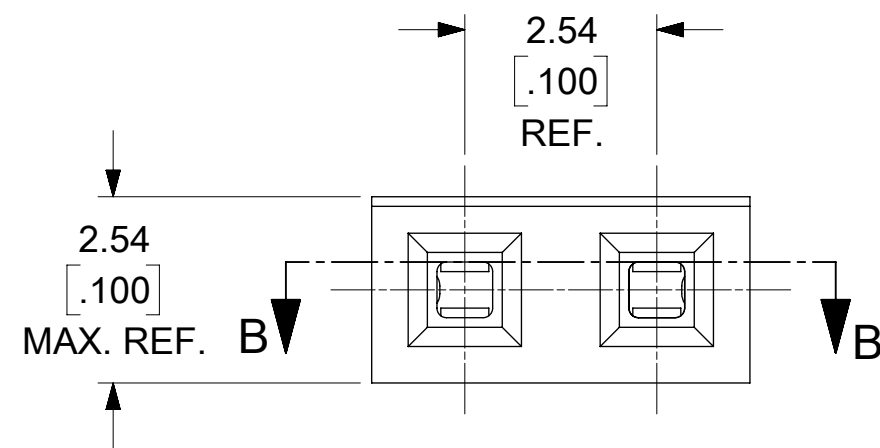
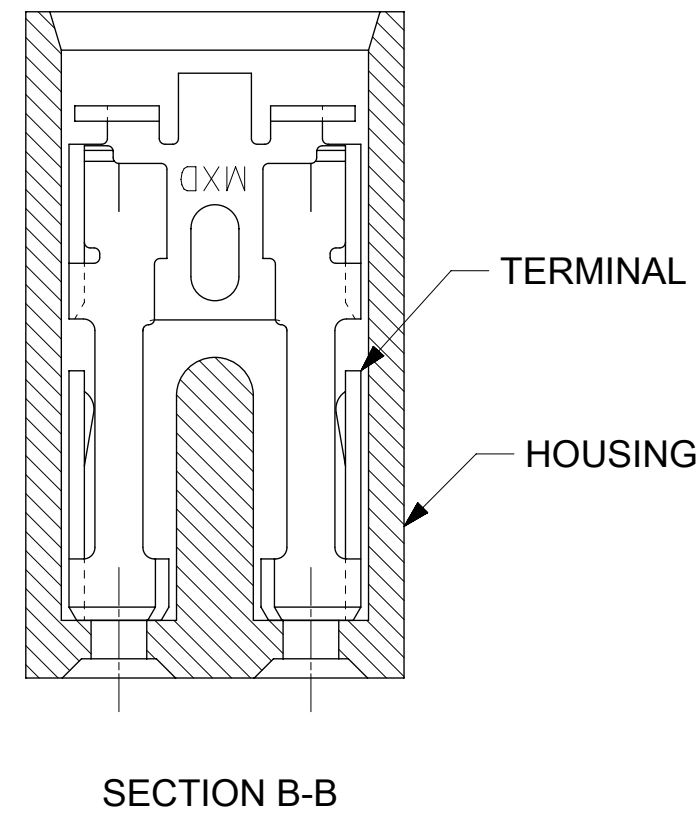
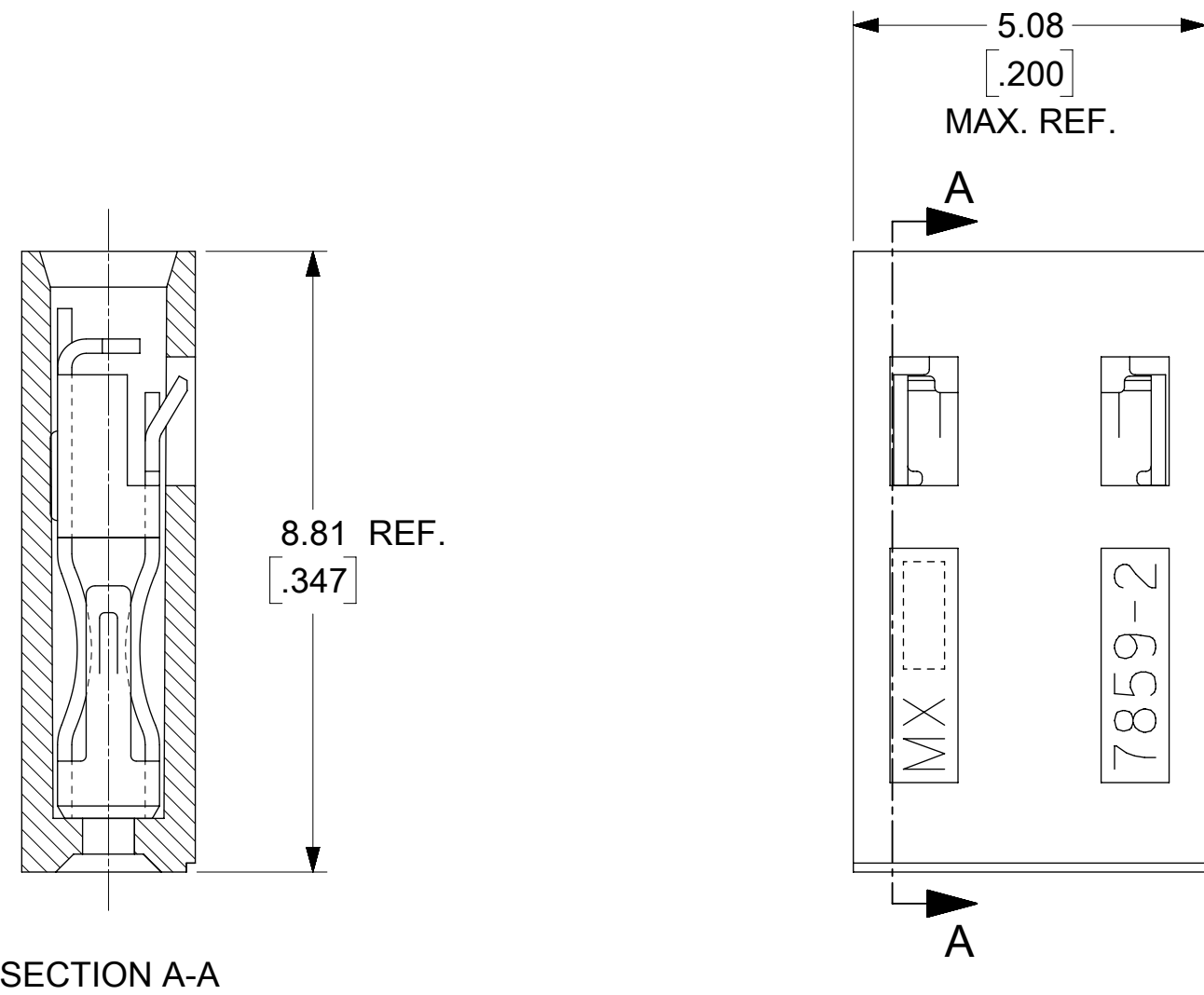


# TERMINAL WITH PIN STOP



EDP NO.	ENG. NO.	FINISH
15-38-1026	A-7859-2A164	TIN OVERALL
15-29-1025	A-7859-2A554	15 GOLD
15-29-1027	A-7859-2A561	30 GOLD
7859-1027		30 GOLD



## FINISH SPECIFICATION

TIN OVERALL - 3.89 $\mu$ m/[0.000150] MINIMUM TIN PLATE OVER  
 1.27 $\mu$ m/[0.000050] MINIMUM NICKEL UNDERPLATE.  
 15 GOLD - 0.389 $\mu$ m/[0.000015] MINIMUM GOLD PLATE IN SELECT AREA OVER  
 1.27 $\mu$ m/[0.000050] MINIMUM NICKEL UNDERPLATE OVERALL.  
 30 GOLD - 0.762 $\mu$ m/[0.000030] MINIMUM GOLD PLATE IN SELECT AREA OVER  
 1.27 $\mu$ m/[0.000050] MINIMUM NICKEL UNDERPLATE OVERALL.

## NOTES:

- MATERIAL:  
 HOUSING: GLASS FILLED POLYESTER; 94V-0; COLOR: BLACK  
 TERMINAL: PHOSPHOR BRONZE ALLOY.
- THIS PRODUCT CONFORMS TO MOLEX PRODUCT SPEC. PS-7859.
- TO BE USED WITH 0.64/[0.025] SQUARE PINS.
- MINIMUM MATING PIN LENGTH: 5.08/[0.200]  
 MAXIMUM MATING PIN LENGTH: 6.86/[0.270]
- PRODUCT IS PACKAGED IN BOXES PER PK-70873-0815.

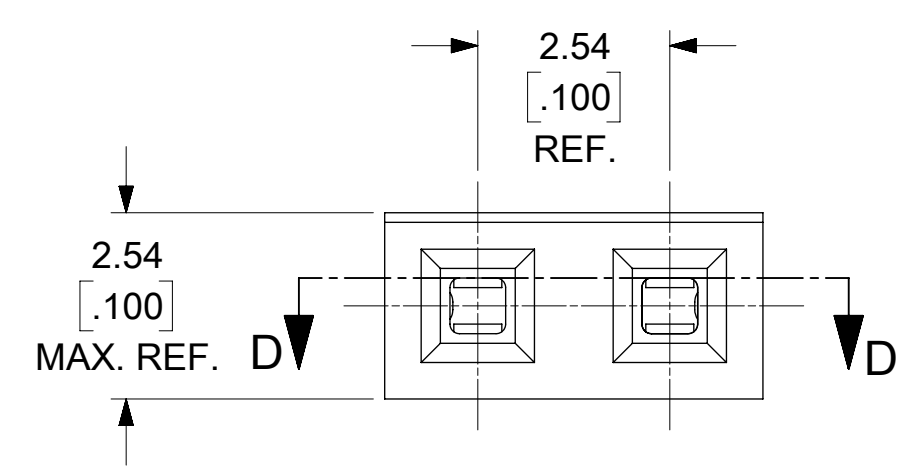
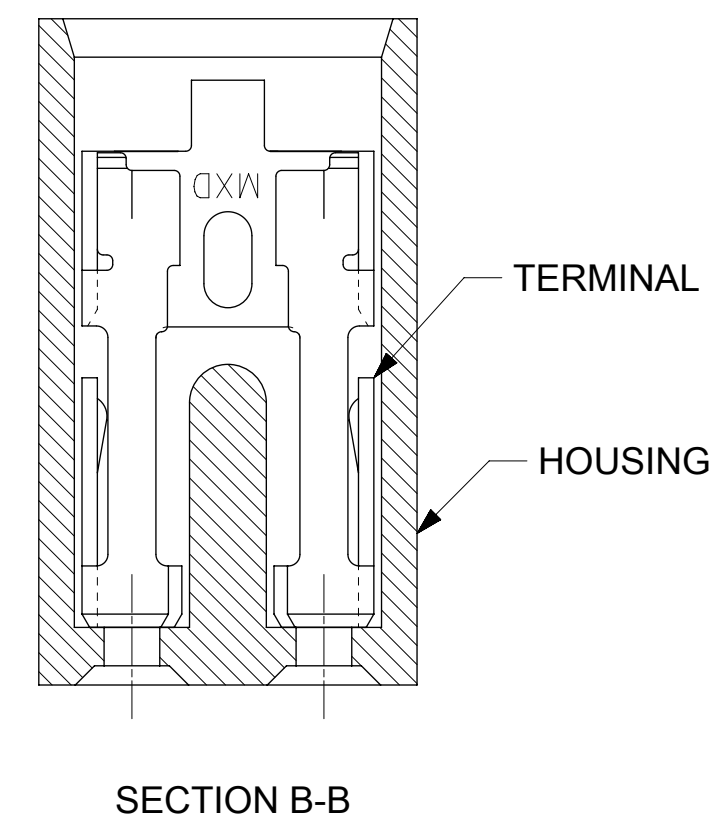
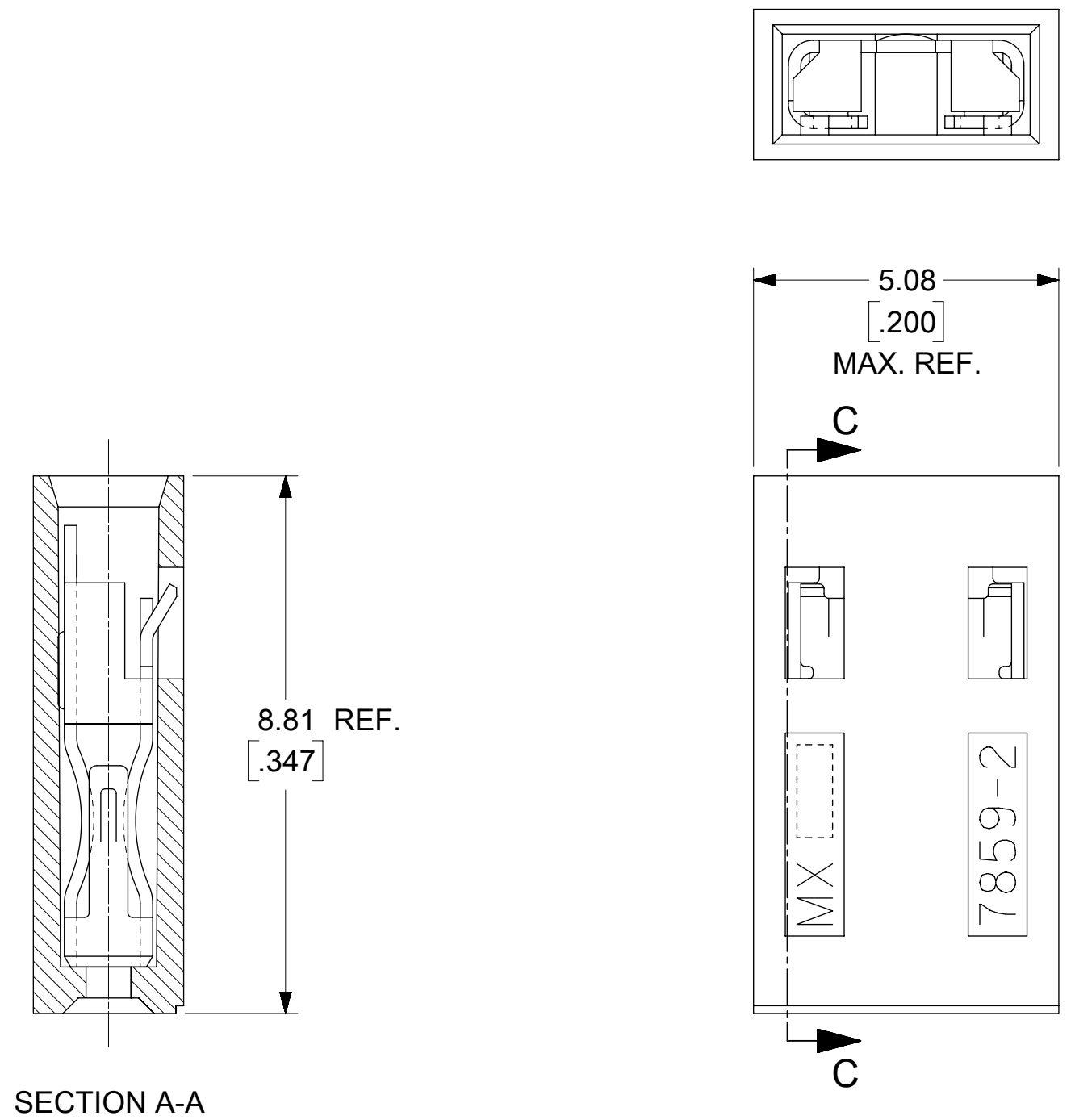
## NOTE FOR LEAD FREE CONVERSION:

THE PRIMARY SHIPPING CARTON WILL BE LABELED "COMPLIANT TO RoHS DIRECTIVE 2002/95/EC AND ELV ANNEX II OF DIRECTIVE 2000/53/EC". CARTONS WITHOUT THIS LABEL MAY CONTAIN PRODUCT WITH LEAD.

THIS DRAWING CONTAINS INFORMATION THAT IS PROPRIETARY TO MOLEX ELECTRONIC TECHNOLOGIES, LLC AND SHOULD NOT BE USED WITHOUT WRITTEN PERMISSION																														
SYMBOLS	DIMENSION UNITS	SCALE	CURRENT REV DESC: MIGRATED TO NX																											
$\nabla = 0$	MM/INCH	10:1	<table border="0"> <tr> <td>EC NO: 614890</td> <td>2019/04/02</td> <td colspan="2" rowspan="2"><b>molex</b></td> <td colspan="3" rowspan="2">SALES ASSY - SHUNT 2-CIRCUIT TERMINAL W/PIN STOP</td> </tr> <tr> <td>DRWN: NMANE02</td> <td>2019/04/02</td> </tr> <tr> <td>CHK'D: ISHWARG</td> <td>2019/04/02</td> <td colspan="2" rowspan="2">PRODUCT CUSTOMER DRAWING</td> <td colspan="3" rowspan="2">DOCUMENT NUMBER: SDA-7859-2AXXXN</td> </tr> <tr> <td>APPR: ISHWARG</td> <td>2019/04/02</td> <td>DOC TYPE: PSD</td> <td>DOC PART: 001</td> <td>REVISION: D2</td> </tr> </table>							EC NO: 614890	2019/04/02	<b>molex</b>		SALES ASSY - SHUNT 2-CIRCUIT TERMINAL W/PIN STOP			DRWN: NMANE02	2019/04/02	CHK'D: ISHWARG	2019/04/02	PRODUCT CUSTOMER DRAWING		DOCUMENT NUMBER: SDA-7859-2AXXXN			APPR: ISHWARG	2019/04/02	DOC TYPE: PSD	DOC PART: 001	REVISION: D2
EC NO: 614890	2019/04/02	<b>molex</b>								SALES ASSY - SHUNT 2-CIRCUIT TERMINAL W/PIN STOP																				
DRWN: NMANE02	2019/04/02																													
CHK'D: ISHWARG	2019/04/02	PRODUCT CUSTOMER DRAWING								DOCUMENT NUMBER: SDA-7859-2AXXXN																				
APPR: ISHWARG	2019/04/02			DOC TYPE: PSD	DOC PART: 001	REVISION: D2																								
$\nabla = 0$	GENERAL TOLERANCES (UNLESS SPECIFIED)		INITIAL REVISION:		DOCUMENT NUMBER			DOC TYPE	DOC PART	REVISION																				
$\nabla = 0$	4 PLACES $\pm$ $\pm$		DRWN: BSMART		2004/05/05			MATERIAL NUMBER																						
$\nabla = 0$	3 PLACES $\pm$ $\pm$ 0.005		APPR: SMILLER		2004/05/18			CUSTOMER																						
$\nabla = 0$	2 PLACES $\pm$ 0.13 $\pm$ 0.01		THIRD ANGLE PROJECTION		DRAWING			SHEET NUMBER																						
$\nabla = 0$	1 PLACE $\pm$ 0.25 $\pm$		DRAFT WHERE APPLICABLE MUST REMAIN WITHIN DIMENSIONS		C-SIZE			1 OF 2																						
$\nabla = 0$	0 PLACES $\pm$ $\pm$		ANGULAR TOL $\pm$ 0.5°		SERIES			SEE CHART																						
$\nabla = 0$	GENERAL TOLERANCES (UNLESS SPECIFIED)		THIRD ANGLE PROJECTION		SERIES			GENERAL MARKET																						
$\nabla = 0$	4 PLACES $\pm$ $\pm$		DRAWING		7859			1 OF 2																						

# TERMINAL WITH OUT PIN STOP

EDP NO.	ENG. NO.	FINISH
15-38-1024	A-7859-2164	TIN OVERALL
15-29-1024	A-7859-2554	15 GOLD
15-29-1026	A-7859-2561	30 GOLD
7859-1024		TIN OVERALL



## FINISH SPECIFICATION

TIN OVERALL - 3.89µm/[0.000150] MINIMUM TIN PLATE OVER  
 1.27µm/[0.000050] MINIMUM NICKEL UNDERPLATE.  
 15 GOLD - 0.389µm/[0.000015] MINIMUM GOLD PLATE IN SELECT AREA OVER  
 1.27µm/[0.000050] MINIMUM NICKEL UNDERPLATE OVERALL.  
 30 GOLD - 0.762µm/[0.000030] MINIMUM GOLD PLATE IN SELECT AREA OVER  
 1.27µm/[0.000050] MINIMUM NICKEL UNDERPLATE OVERALL.

NOTE FOR LEAD FREE CONVERSION:  
 THE PRIMARY SHIPPING CARTON WILL BE LABELED "COMPLIANT TO RoHS DIRECTIVE 2002/95/EC AND ELV ANNEX II OF DIRECTIVE 2000/53/EC". CARTONS WITHOUT THIS LABEL MAY CONTAIN PRODUCT WITH LEAD.

## NOTES:

- MATERIAL:  
 HOUSING: GLASS FILLED POLYESTER; 94V-0; COLOR: BLACK  
 TERMINAL: PHOSPHOR BRONZE ALLOY.
- THIS PRODUCT CONFORMS TO MOLEX PRODUCT SPEC. PS-7859.
- TO BE USED WITH 0.64/[0.025] SQUARE PINS.
- MINIMUM MATING PIN LENGTH: 5.08/[0.200]  
 MAXIMUM MATING PIN LENGTH: 6.86/[0.270]
- PRODUCT IS PACKAGED IN BOXES PER PK-70873-0815.

SYMBOLS		THIS DRAWING CONTAINS INFORMATION THAT IS PROPRIETARY TO MOLEX ELECTRONIC TECHNOLOGIES, LLC AND SHOULD NOT BE USED WITHOUT WRITTEN PERMISSION	
DIMENSION UNITS	SCALE	CURRENT REV DESC: MIGRATED TO NX	
∇ = 0	mm	10:1	<b>molex</b> SALES ASSY - SHUNT 2-CIRCUIT TERMINAL W/PIN STOP PRODUCT CUSTOMER DRAWING
∇ = 0	GENERAL TOLERANCES (UNLESS SPECIFIED)		
∇ = 0	MM	INCH	
S = 0	4 PLACES	±	EC NO: 614890
∇ = 0	3 PLACES	±	DRWN: NMANE02 2019/04/02
∇ = 0	2 PLACES	± 0.13 ± 0.01	CHK'D: ISHWARG 2019/04/02
∇ = 0	1 PLACE	± 0.25 ±	APPR: ISHWARG 2019/04/02
∇ = 0	0 PLACES	±	INITIAL REVISION:
∇ = 0	ANGULAR TOL	± 0.5 °	DRWN: BSMART 2004/05/05
∇ = 0	DRAFT WHERE APPLICABLE MUST REMAIN WITHIN DIMENSIONS		APPR: SMILLER 2004/05/18
		THIRD ANGLE PROJECTION	DRAWING SERIES
		C-SIZE	7859
DOCUMENT STATUS		P1	RELEASE DATE 2019/04/02 16:12:36
DOCUMENT NUMBER		SDA-7859-2AXXXN	DOC TYPE DOC PART REVISION
MATERIAL NUMBER		SEE CHART	CUSTOMER GENERAL MARKET SHEET NUMBER 2 OF 2