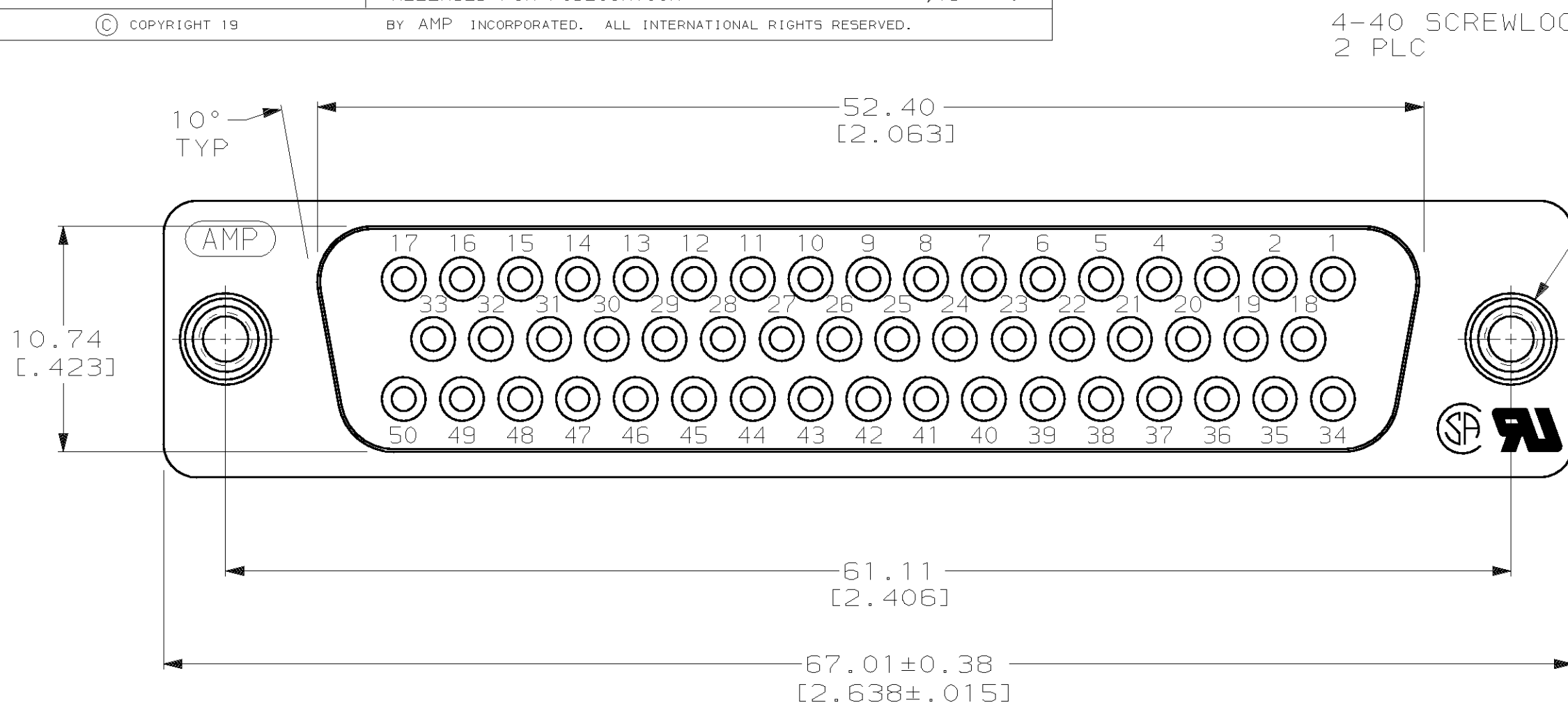
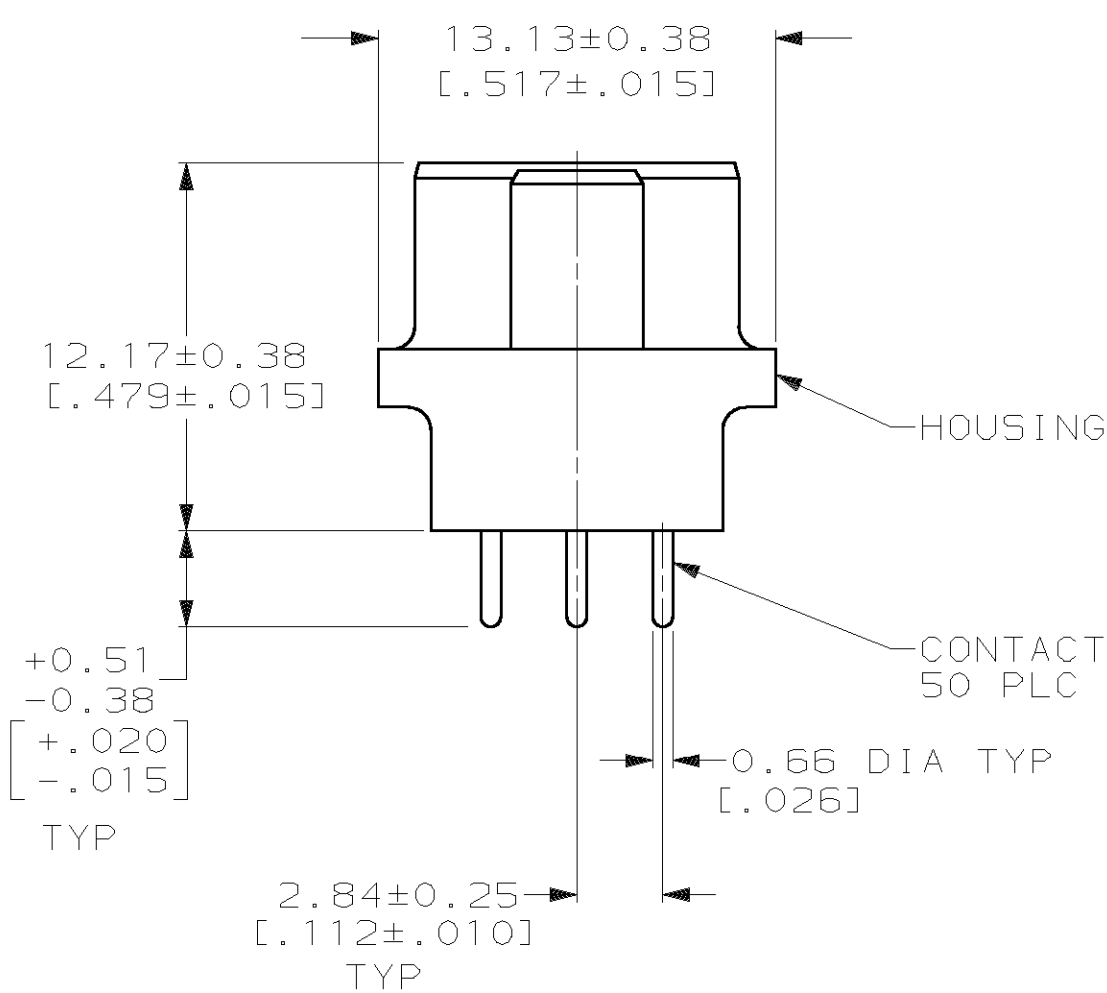
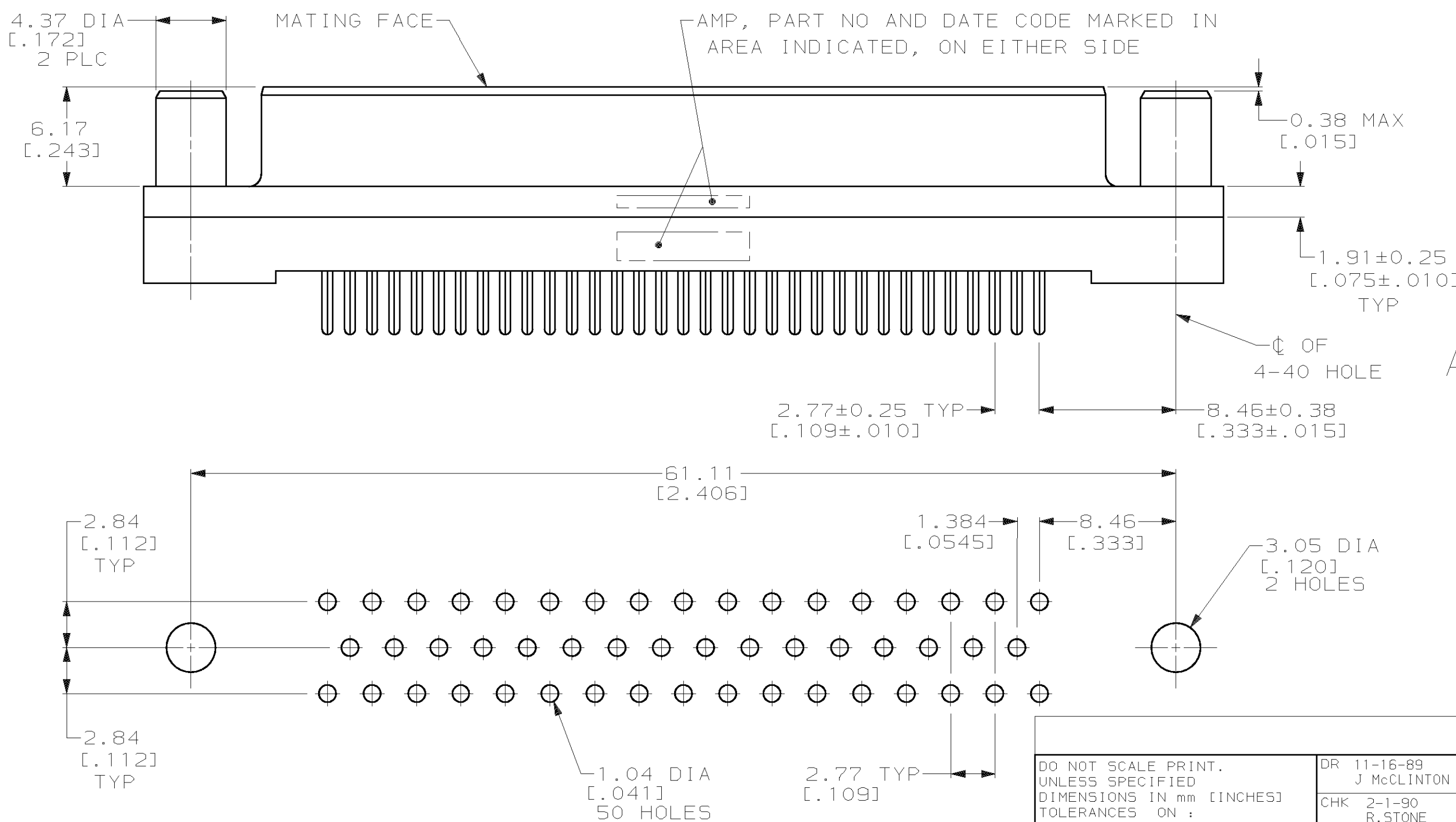


THIS DRAWING IS UNPUBLISHED. RELEASED FOR PUBLICATION
 © COPYRIGHT 19 BY AMP INCORPORATED. ALL INTERNATIONAL RIGHTS RESERVED.

LOC		DIST		P		F		ZONE		LTR		REVISIONS			
GP		00										DESCRIPTION	DATE	APPD	
												G	REVISED PER EC 0513-0017-03	12MAY03	JG



- 1 HOUSING: BLACK POLYESTER, UL 94V-0 RATED; CONTACTS: PHOSPHOR BRONZE PER QQ-B-750; SCREWLOCKS: BRASS PER QQ-B-626.
- 2 GOLD PLATING PER MIL-G-45204, TIN PLATING PER MIL-T-10727, NICKEL PLATING PER QQ-N-290, COPPER PLATING PER MIL-C-14550.
- 3 GOLD FLASH FOR A LENGTH OF 2.54[.100] MIN FROM MATING END, 2.54μm[.000100] MIN TIN OR TIN-LEAD FOR A LENGTH OF DIMENSION A FROM OPPOSITE END, ALL OVER 1.27μm[.000050] MIN NICKEL.
- 4 0.76μm[.000030] MIN GOLD FOR A LENGTH OF 2.54[.100] MIN FROM MATING END, 2.54μm[.000100] MIN TIN OR TIN-LEAD FOR A LENGTH OF DIMENSION A FROM OPPOSITE END, ALL OVER 1.27μm[.000050] MIN NICKEL.
- 5 1.27μm[.000050] MIN NICKEL OVER COPPER FLASH.



OBSOLETE	6.35 [0.250]	4		745080-8
OBSOLETE	6.35 [0.250]	3		745080-7
	4.32 [0.170]	4		745080-6
OBSOLETE	4.32 [0.170]	3		745080-5
	3.18 [0.125]	4		745080-4
OBSOLETE	3.18 [0.125]	3		745080-3

RECOMMENDED PC BOARD MOUNTING DIMENSIONS

DO NOT SCALE PRINT. UNLESS SPECIFIED DIMENSIONS IN mm [INCHES] TOLERANCES ON:
 2 PLC DEC ± 0.13 [0.005]
 3 PLC DEC ± -
 ANGLES ± 2°

FINISH 2 CONTACT: SEE TABLE SCREWLOCK: 5

DR 11-16-89 J McCLINTON
 CHK 2-1-90 R.STONE
 APPD 2-2-90 S.SCHIEFFERLY
 APPD 2-2-90 C.ROHDE
 PRODUCT SPEC 108-40025
 APPLICATION SPEC -
 WEIGHT -

AMP AMP INCORPORATED Harrisburg, Pa. 17105	
NAME RECEPTACLE ASSEMBLY, SIZE 5, 50 POSN, VERTICAL, AMPLIMITE® HD-20	
SIZE C	CAGE CODE 00779
SCALE 4:1	DRAWING NO 745080
	SHEET 1 OF 1