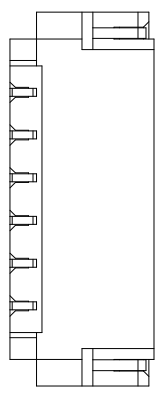
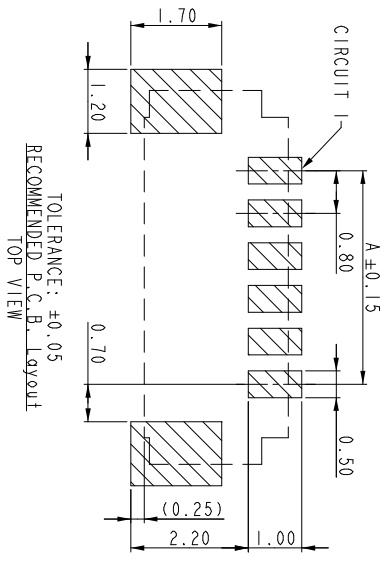
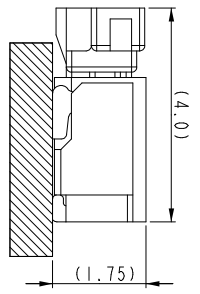
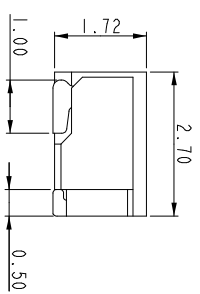
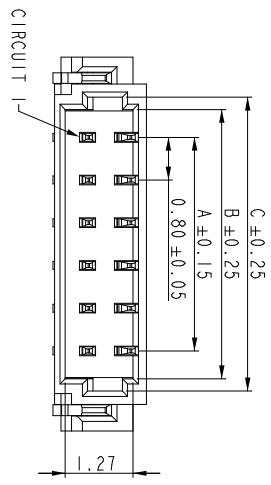
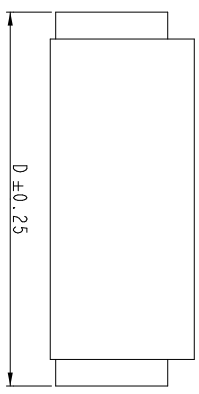


PRODUCT NUMBER
SEE PART NO. TABLE



NOTES:

1. MATERIAL: INSULATION(HALOGEN FREE): LCP, UL94V-0,GLOW WIRE COMPATIBLE CONTACT: COPPER ALLOY, $t=0.15$
2. MATE WITH RECEPTACLE: AFCI 10145492
3. THE INSULATION CAN WITHSTAND IR REFLOW 260°C FOR 10 SECONDS
4. PRODUCT SPEC: GS-12-1444
5. PACKAGING SPEC: GS-14-2616
6. ORDERING CODE: 10144041-XX

NO. OF PINS 02~24 PIN
INSULATION COLOR
O: CREAM
1: BLACK

PACKAGE
1: TAPE & REEL
CONTACT FINISH
1: TIN PLATED OVER NICKEL
2: GOLD FLASH OVER NICKEL

| PIN | A | B | C | D | PIN | A | B | C | D |
|-----|------|------|------|-------|-----|-------|-------|-------|-------|
| 02 | 0.80 | 1.84 | 2.30 | 3.80 | 11 | 8.00 | 9.04 | 9.50 | 11.00 |
| 03 | 1.60 | 2.64 | 3.10 | 4.60 | 12 | 8.80 | 9.84 | 10.30 | 11.80 |
| 04 | 2.40 | 3.44 | 3.90 | 5.40 | 14 | 10.40 | 11.44 | 11.90 | 13.40 |
| 05 | 3.20 | 4.24 | 4.70 | 6.20 | 15 | 11.20 | 12.24 | 12.70 | 14.20 |
| 06 | 4.00 | 5.04 | 5.50 | 7.00 | 16 | 12.00 | 13.04 | 13.50 | 15.00 |
| 07 | 4.80 | 5.84 | 6.30 | 7.80 | 17 | 12.80 | 13.84 | 14.30 | 15.80 |
| 08 | 5.60 | 6.64 | 7.10 | 8.60 | 20 | 15.20 | 16.24 | 16.70 | 18.20 |
| 09 | 6.40 | 7.44 | 7.90 | 9.40 | 22 | 16.80 | 17.84 | 18.30 | 19.80 |
| 10 | 7.20 | 8.24 | 8.70 | 10.20 | 24 | 18.40 | 19.44 | 19.90 | 21.40 |

| mat'l. code | ISO 1302 | ISO 406 | ISO 1101 | projection | product family |
|---------------------------------------|-----------|-----------|-----------|------------|----------------|
| tolerances unless otherwise specified | tolerance | tolerance | tolerance | projection | MINITEK |
| XX±.25 | XX±.15 | XXX±.08 | mm | scale 1:1 | |

| ltr | ecm no | dr | date | surface | revision | sheet | index |
|-----|-------------|-------|------------|---------------------------------------|------------|------------|-------|
| A | New Release | Tony | 2017-05-22 | ISO 1302 | B | 1 | |
| B | Elx-N-33468 | Jason | 2019-05-14 | tolerances unless otherwise specified | | | |
| | | | | dr | TONY LENG | 2017-05-22 | |
| | | | | engr | Jason Wang | 2019-05-09 | |
| | | | | chr | L.Q Lei | 2019-05-09 | |
| | | | | qppd | TIM YAO | 2019-05-09 | |