

4

3

2

1

THIS DRAWING IS UNPUBLISHED. RELEASED FOR PUBLICATION 20
 © COPYRIGHT 20 BY - ALL RIGHTS RESERVED.

REVISIONS				
P	LTR	DESCRIPTION	DATE	APVD
5		CHANGE RECESS OF HOUSING, T/R CONFIRM	07DEC2018	A.L H.L
6		ADD PAGE 3 OF PACKAGE INFO	01FEB2019	A.L H.L
7		REMOVE Preliminary mark	13JUN2019	A.L H.L
A		REVISE TO A	26NOV2019	AL HL

NOTES:

1 MATERIAL:
 HOUSING AND CONTACT OVERMOLD: LCP, BLACK.
 METAL COVER: STAINLESS STEEL.
 CONTACTS: COPPER ALLOY.

2 FINISH:
 UNDERPLATE: 1.27um MIN. NICKEL ALL OVER.
 ENGAGEMENT AREA: AU PLATED
 SOLDERING AREA: 1.0um MIN. MATTE TIN

3. DESIGNED FOR A 1.00 MIN THICK PC BOARD.

4 TE CONNECTIVITY LOGO MARKED IN APPROXIMATE AREA SHOWN.

5 PART NUMBER AND DATE CODE MARKED IN APPROXIMATE AREA SHOWN.

6. PACKAGE: TAPE & REEL, 300PCS CONNECTORS PER REEL

SCALE 4:1

80PINS 7H PLUG CONNECTOR WITH COVER

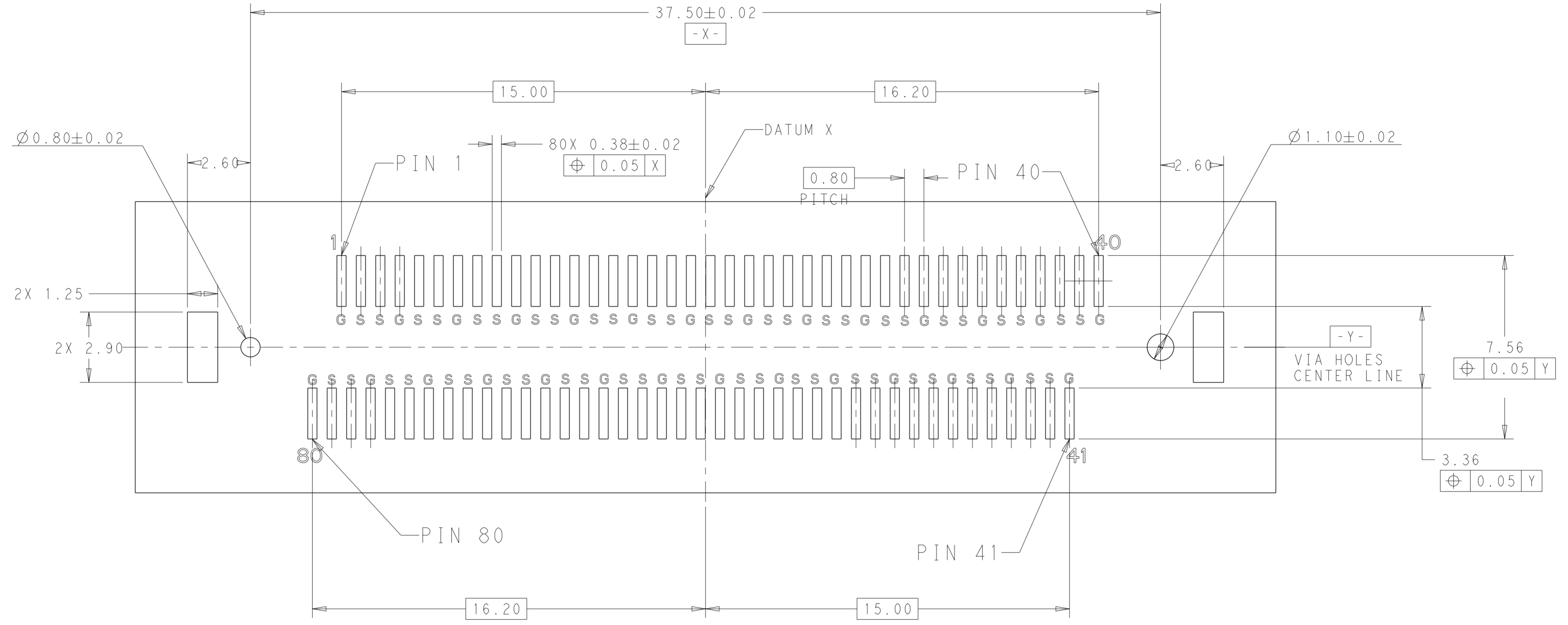
15u" Au TYPE	2341305-1
DESCRIPTION	P/N

THIS DRAWING IS A CONTROLLED DOCUMENT.		DWN	ART.LIN	27AUG2018	STE TE Connectivity			
		CHK	HOPE LU	07DEC2018				
		APVD	HOPE LU	07DEC2018				
		PRODUCT SPEC	108-115138-1					
DIMENSIONS: mm		TOLERANCES UNLESS OTHERWISE SPECIFIED:		NAME				
		0 PLC ±-		80POS FH+ BTB PLUG CONNECTOR				
		1 PLC ±0.2		- VERTICAL TYPE, 7H, HIGH SPEED				
		2 PLC ±0.15		SIZE		CAGE CODE	DRAWING NO	RESTRICTED TO
		3 PLC ±0.050		114-115019		A200779	C-2341305	
4 PLC ±0.0050		ANGLES ±2°						
MATERIAL		FINISH		WEIGHT				
1 -		2 -		CUSTOMER DRAWING				
				SCALE 5:1				
				SHEET 1 OF 3				
				REV A				

1471-9 (3/13)

THIS DRAWING IS UNPUBLISHED. RELEASED FOR PUBLICATION 20
 © COPYRIGHT 20 BY - ALL RIGHTS RESERVED.

REVISIONS				
P	LTR	DESCRIPTION	DATE	APVD
-	-	SEE SHEET 1	-	-



SCALE 8:1

RECOMMENDED PCB LAYOUT FOR 80PINS

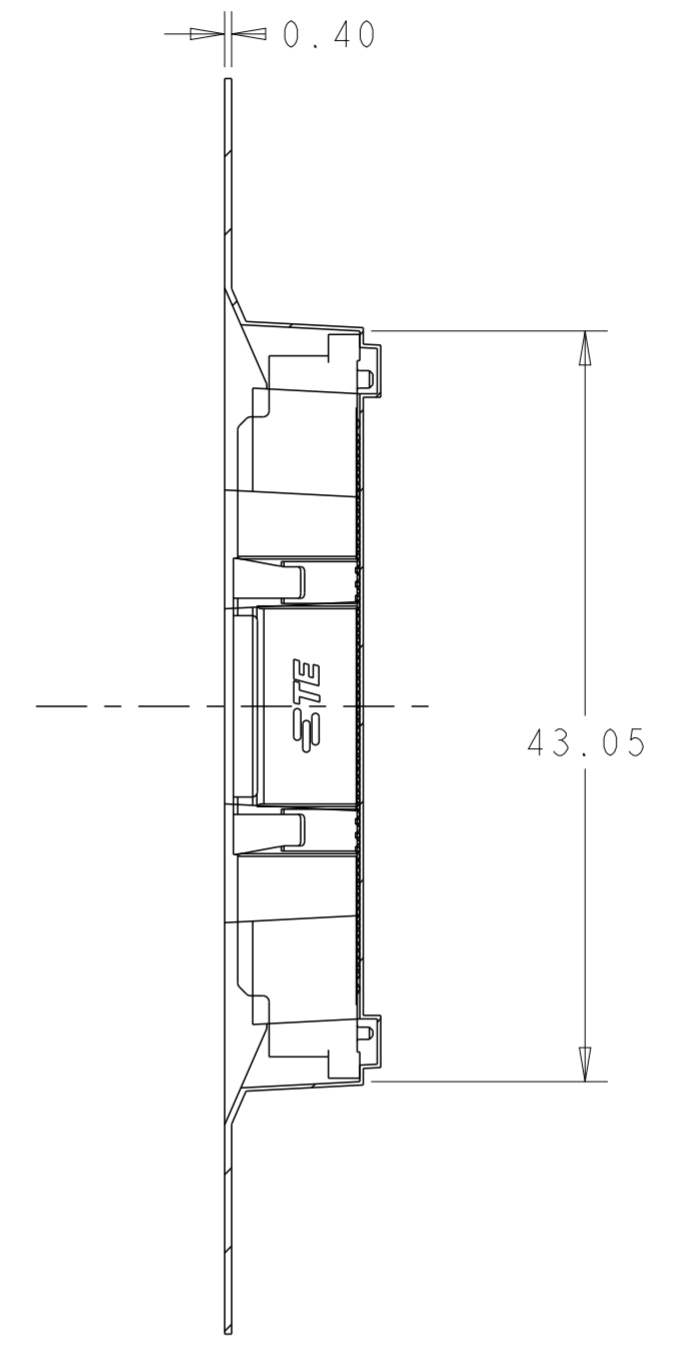
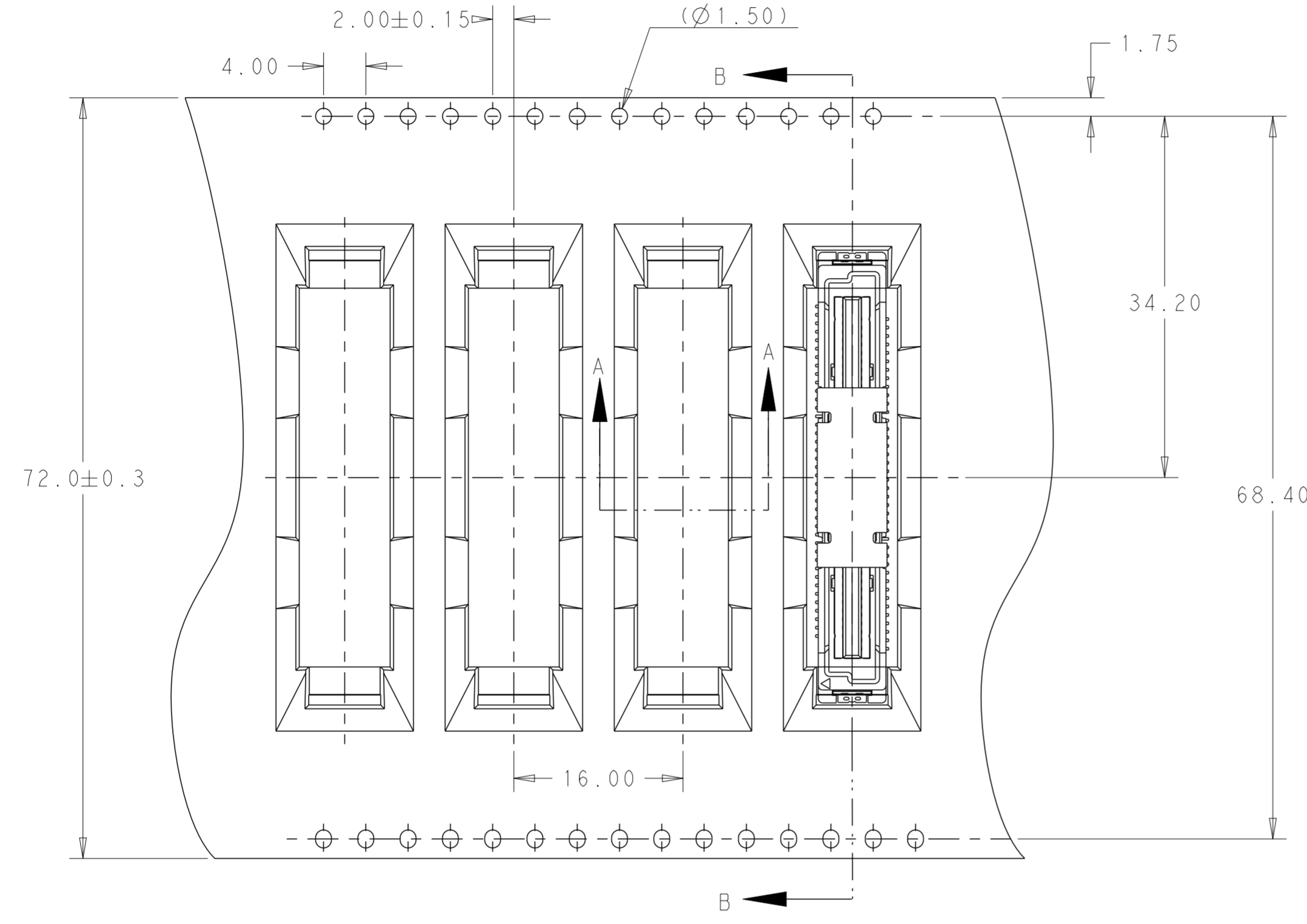
S: SIGNAL
 G: GROUND

THIS DRAWING IS A CONTROLLED DOCUMENT.		DWN ART.LIN 27AUG2018	STE TE Connectivity
DIMENSIONS: mm		CHK HOPE LU 07DEC2018	
TOLERANCES UNLESS OTHERWISE SPECIFIED:		APVD HOPE LU 07DEC2018	NAME 80POS FH+ BTB PLUG CONNECTOR
0 PLC ± 1 PLC ±0.2 2 PLC ±0.15 3 PLC ±0.050 4 PLC ±0.0050 ANGLES ±2°		PRODUCT SPEC 108-115138-1	APPLICATION SPEC 114-115019
MATERIAL -		WEIGHT -	SIZE A200779
FINISH -		CUSTOMER DRAWING	RESTRICTED TO C-2341305
		SCALE 5:1	SHEET 2 OF 3
			REV A

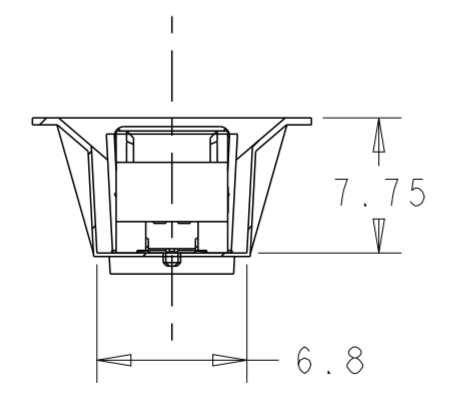
THIS DRAWING IS UNPUBLISHED. RELEASED FOR PUBLICATION 20
 © COPYRIGHT 20 BY - ALL RIGHTS RESERVED.

REVISIONS				
P	LTR	DESCRIPTION	DATE	APVD
-	-	SEE SHEET 1	-	-

USER DIRECTION OF UNREELING →




SECTION B-B



SECTION A-A

330DIA-100DIA(HUB)-77.5W(72.5W INSIDE)	PLASTIC	300+80 POCKETS MIN
SIZE(REF.)	FLANGE MATERIAL	QUANTITY PER REEL
REEL		

THIS DRAWING IS A CONTROLLED DOCUMENT.		DWN ART.LIN 27AUG2018	 TE Connectivity	
DIMENSIONS: mm		CHK HOPE LU 07DEC2018		
TOLERANCES UNLESS OTHERWISE SPECIFIED:		APVD HOPE LU 07DEC2018	NAME 80POS FH+ BTB PLUG CONNECTOR	
0 PLC ±		PRODUCT SPEC 108-115138-1	VERTICAL TYPE,7H,HIGH SPEED	
1 PLC ±0.2		APPLICATION SPEC 114-115019	SIZE A2	CAGE CODE 00779
2 PLC ±0.15		WEIGHT -	DRAWING NO C-2341305	RESTRICTED TO
3 PLC ±0.050		CUSTOMER DRAWING	SCALE 5:1	SHEET 3 OF 3
4 PLC ±0.0050				REV A
ANGLES ±2°				
FINISH				