

Introduction

The MicroClock development kit is designed to support the 5x2503 family of MicroClock devices. It provides a convenient way of verifying, configuring and programming the blank parts for all MicroClock devices. The IDT [Timing Commander™](#) GUI communicates to the devices for configuration and frequency validation on the USB mother board via an on-board USB interface. Using additional socket daughter boards, a validated configuration is used to program blank parts for any of the MicroClock devices.

Table 1. MicroClock Family Products

| Product | Description | Package |
|---------|---|---------|
| 5X2503 | 1.8V integrated with an internal 26M crystal. | 12-DFN |
| 5L2503 | 1.8V using an external 26M crystal. | 12-DFN |

For details of product operation, refer to the product datasheet.

Socket Daughter Board Overview

The MicroClock socket daughter board is ready with all of the necessary components and connections to test the functionality of the configuration. A blank device is placed in the socket for programming (see [Figure 1](#)).

Figure 1. Socket Daughter Board Overview (socket closed)

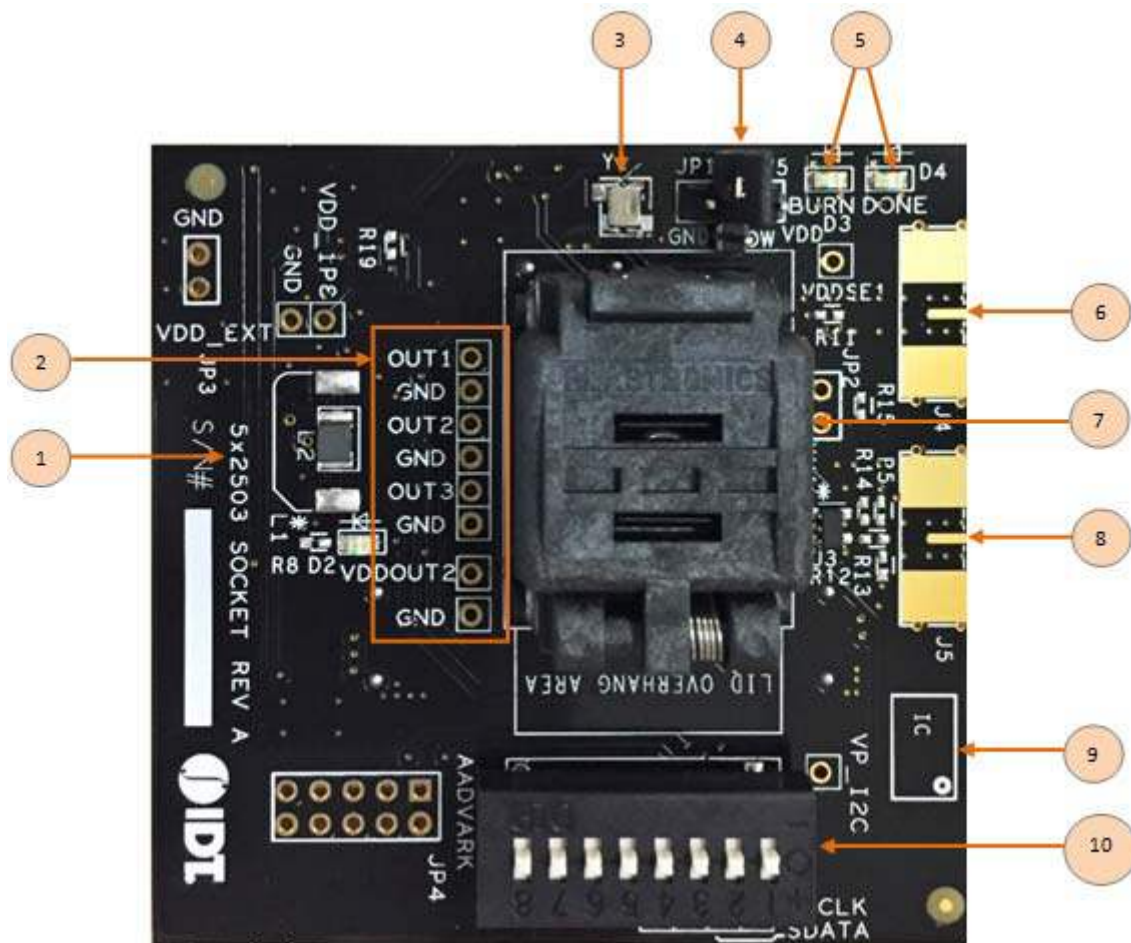
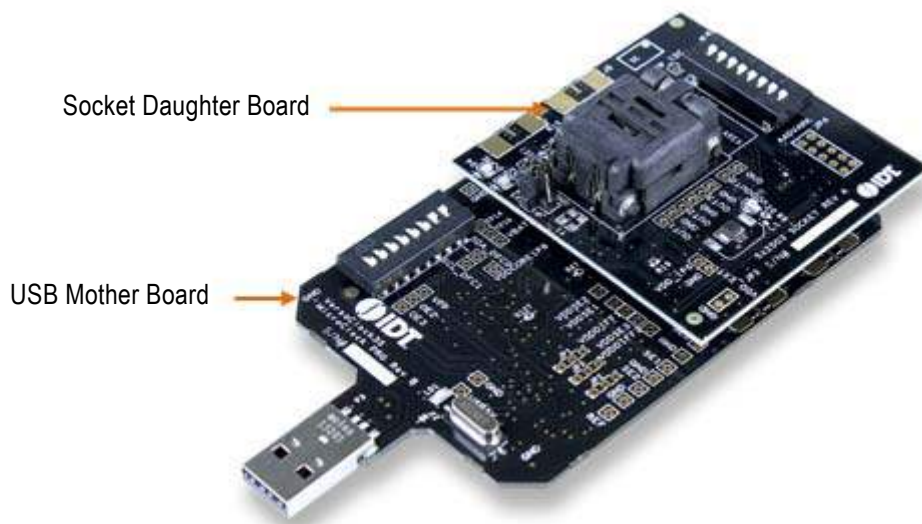


Table 2. Socket Daughter Board Descriptions

| Label Number | Label Name | Description |
|--------------|------------------------------------|---|
| 1 | Device ID | Define the evaluation board supports for 5X2503 or 5L2503. |
| 2 | Probing Notes | These are test points for single-ended outputs; SE1, SE2, SE3 and Reference with GND test points in between. |
| 3 | 26MHz Crystal | Crystal with 8pF load is populated for 5L2503. For 5X2503; the crystal is not populated. |
| 4 | Jumper | A switch jumper to control OE1 function. The default setting is set for OTP burn |
| 5 | LEDs | Two LED lights to indicate the OTP burn process. |
| 6 | SMA connector for OUT1 | Additional frequency test connector using SMA for OUT1. |
| 7 | Socket | 12-pin DFN socket for placing MicroClock blank parts. |
| 8 | SMA Connector for PPS Mode on OUT1 | SMA connector for PPS mode validation. |
| 9 | Part Indication | Indication for device orientation. |
| 10 | DIP Switch | Used to configure the device in different modes (software mode as default for I ² C control; hardware mode as output pin control selection). |

Figure 2. Development Kit Boards

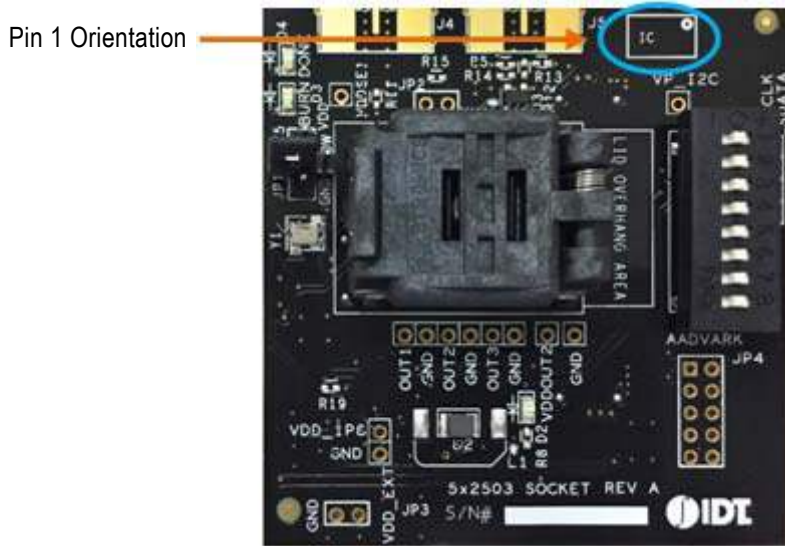
(Evaluation socket daughter board combined with a USB mother board)



The socket daughter board for 5x2503, combined with a USB mother board, is used for the purpose of validation and measurement on all outputs. After a configuration is validated on the USB mother board, the board can be connected along with the specific socket daughter board for programming on blank parts of MicroClock family devices. Note that blank parts can only be burnt once through the socket daughter board. The socket daughter board is bundled with a USB mother board. The following description and images are restricted to the socket daughter board.

On the footprint of the socket daughter board, a pin orientation identifies the position of Pin 1 as shown in [Figure 3](#). Align the dot of the blank part in the socket as pointed. After placing the blank part, secure the socket cover.

Figure 3. Socket Daughter Board (pin position)






Programming Steps

Use programming steps 2 – 7 as described in the [Table 3](#) to program a configuration into the blank part in the specified socket daughter board.

Table 3. Programming Steps

| Step Number | Step Description | Comments |
|-------------|--|---|
| 0 | A configuration has been validated and completed on the development kit. | Configurations should have been validated on the USB mother board and are ready to proceed for programming on blank parts. |
| 1 | All intended outputs should be available for measurement on the USB development kit. | Upon validation of the outputs, “Disconnect” the USB board and proceed for OTP burn as explained in the following sections. |
| 2 | Plug the specified socket daughter board onto the USB mother board (shown in Figure 2). | USB mother board with the socket daughter board provides a communication channel between the GUI and a blank part in the socket daughter board. |
| 3 | Start Timing Commander software (this step can be skipped if a configuration is ready in the personality). | Launch the Timing Commander GUI software. Load the personality file. |

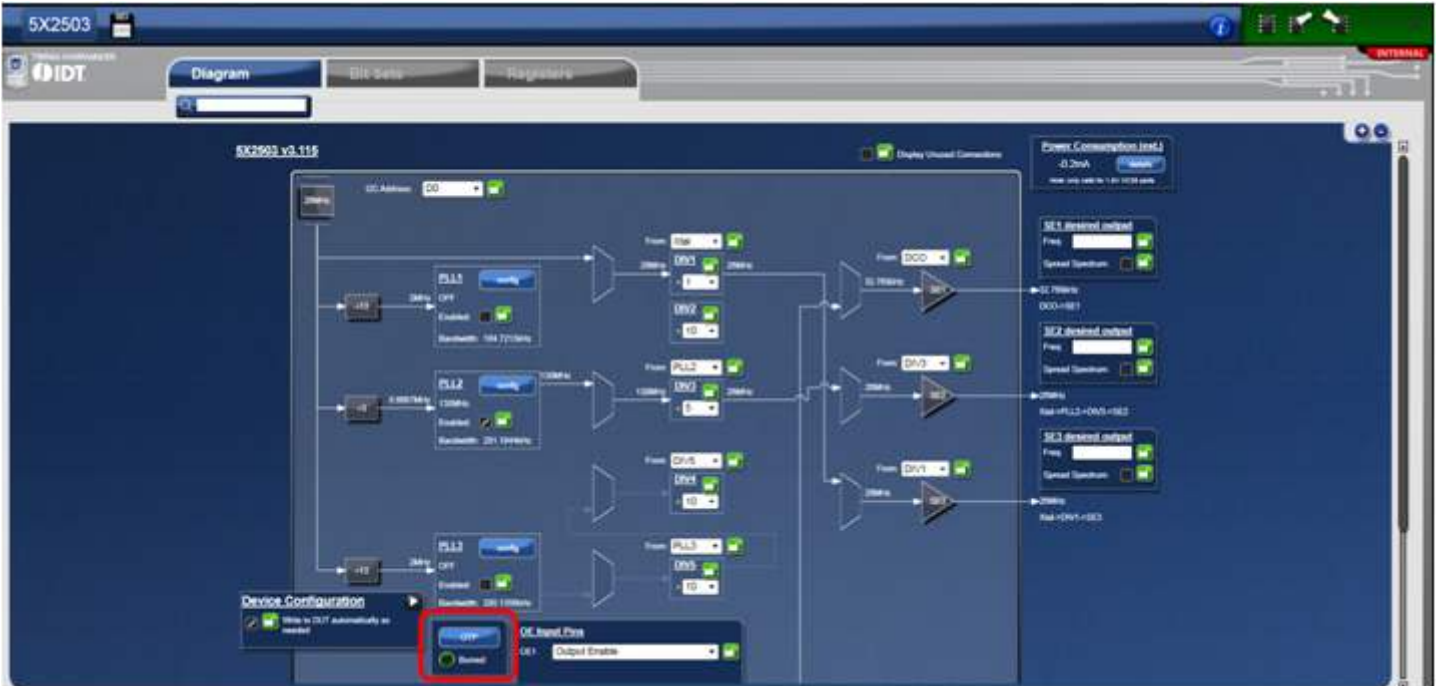
Table 3. Programming Steps (Cont.)

| Step Number | Step Description | Comments |
|-------------|--|--|
| 4 | New settings file (this step can be skipped if a configuration is ready in the personality). | Using the Timing Commander GUI, start a new settings file or open a pre-optimized file. |
| 5 | Connect to the development kit. | Click on the chip symbol on the top right corner of the GUI window.  |
| 6 | — | Once connected, new options will be available on a green background indicating that the USB mother board has successfully connected with the socket daughter board.  |
| 7 | Click the “write all” icon. | The configuration will be programmed into the blank part in the socket.  |

Use the following steps to proceed with the OTP burn.

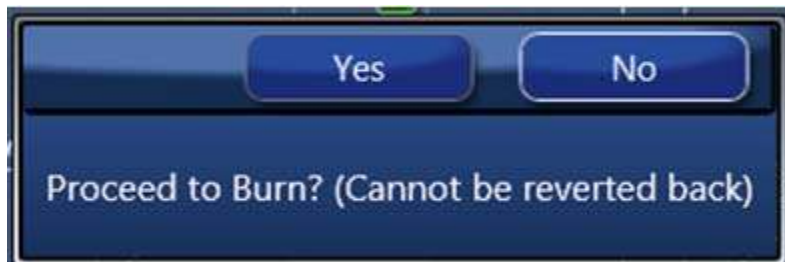
- After the chip is connected to the Timing Commander, the main window of configuration is shown (see Figure 4). Click the OTP icon on the left side of personality window.

Figure 4. Personality Main Window



- After clicking the icon, a new dialogue window will open up (see Figure 5). Click “Yes” to proceed with the OTP burn process. Please note that this process cannot be reverted back.

Figure 5. Proceed to Burn Dialog Window

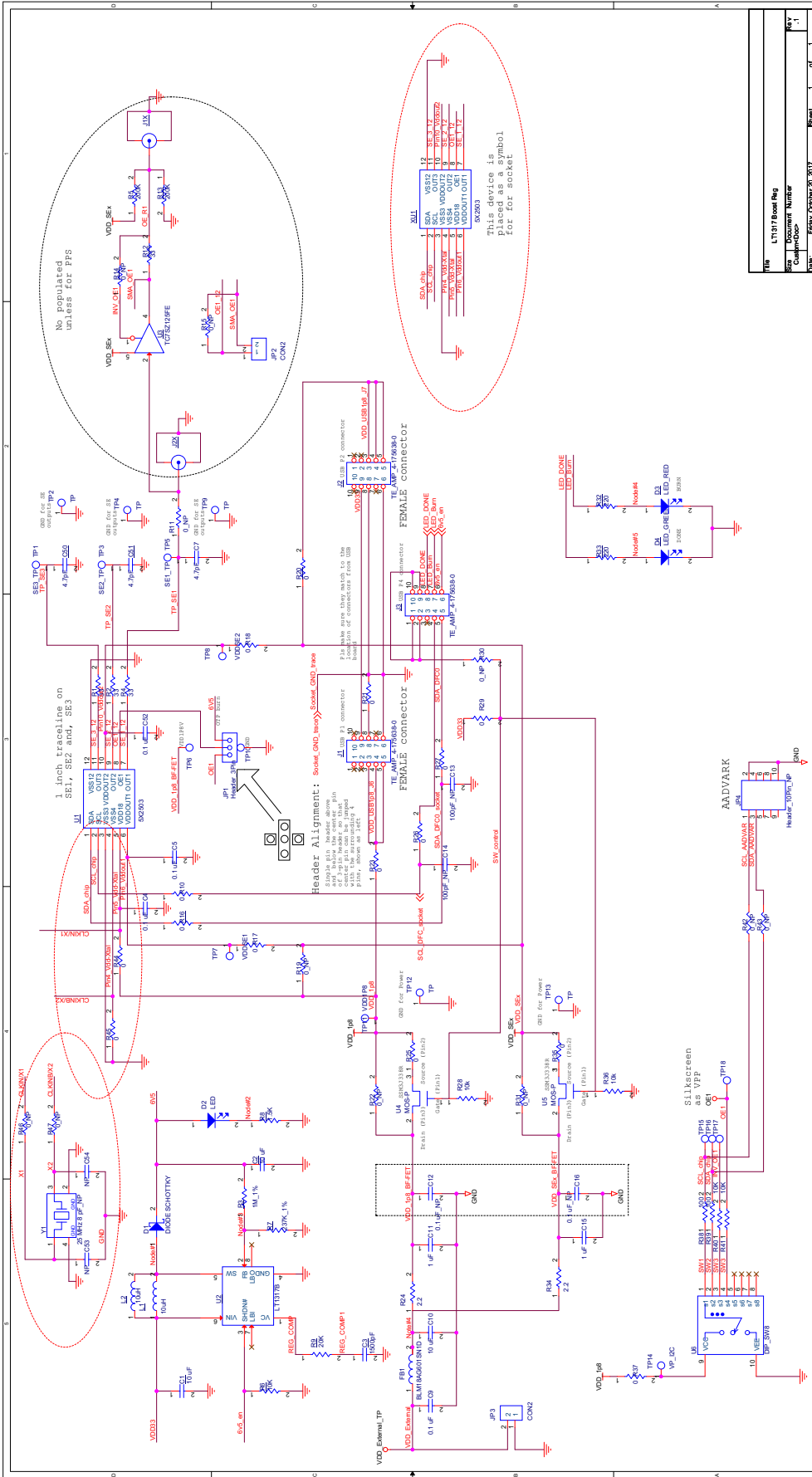


- If the OTP burn process is successful, a dialog window with “Success” will appear indicating that the process is completed and the part has been burnt based on the configuration.

Figure 6. Success Dialog Window

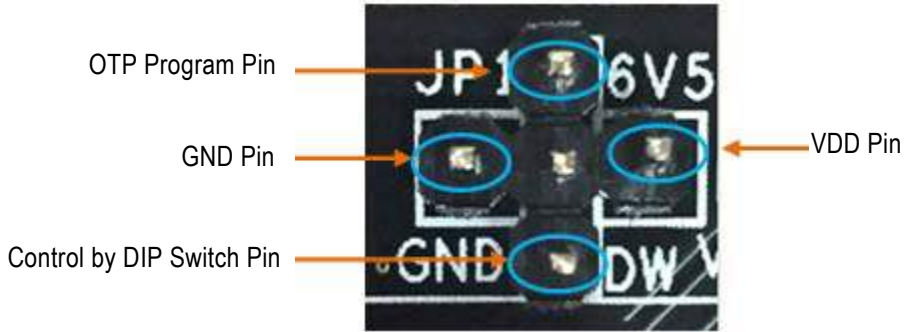


Figure 7. Development Kit Board Schematic 1



OE1 pin on MicroClock socket daughter board provides multiple functions. To program OTP, please ensure to set the jumper (JP1) on OTP program pin (default setting). See [Figure 8](#).

Figure 8. Jumper Setup



Termination Options

Table 4. Termination Options for Single-ended Output -1

| Signal Type | Series Resistor, R4 |
|-------------|---------------------|
| LVC MOS | 33Ω |

Table 5. Termination Options for Single-ended Output -2

| Signal Type | Series Resistor, R2 |
|-------------|---------------------|
| LVC MOS | 33Ω |

Table 6. Termination Options for Single-ended Output -3

| Signal Type | Series Resistor, R1 |
|-------------|---------------------|
| LVC MOS | 33Ω |

Figure 9. 5X2503 Socket Daughter Board (board without crystal)

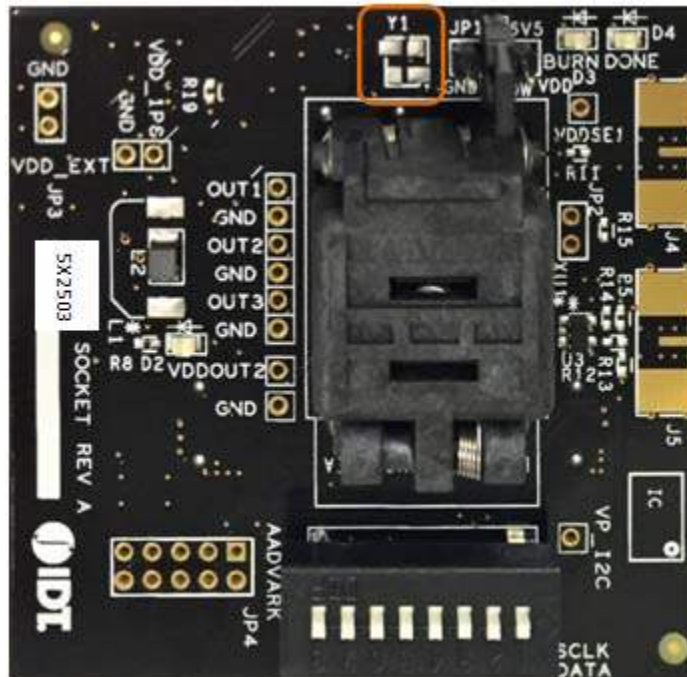
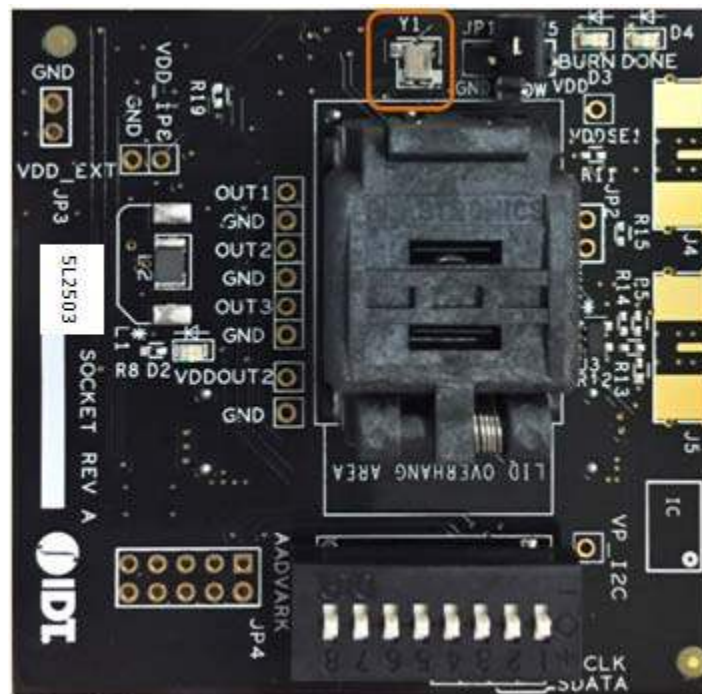


Figure 10. 5L2503 Socket Daughter Board (board populated with a 26MHz crystal)



Revision History

| Revision Date | Description of Change |
|------------------|-----------------------|
| October 20, 2017 | Initial release. |

IMPORTANT NOTICE AND DISCLAIMER

RENESAS ELECTRONICS CORPORATION AND ITS SUBSIDIARIES (“RENESAS”) PROVIDES TECHNICAL SPECIFICATIONS AND RELIABILITY DATA (INCLUDING DATASHEETS), DESIGN RESOURCES (INCLUDING REFERENCE DESIGNS), APPLICATION OR OTHER DESIGN ADVICE, WEB TOOLS, SAFETY INFORMATION, AND OTHER RESOURCES “AS IS” AND WITH ALL FAULTS, AND DISCLAIMS ALL WARRANTIES, EXPRESS OR IMPLIED, INCLUDING, WITHOUT LIMITATION, ANY IMPLIED WARRANTIES OF MERCHANTABILITY, FITNESS FOR A PARTICULAR PURPOSE, OR NON-INFRINGEMENT OF THIRD PARTY INTELLECTUAL PROPERTY RIGHTS.

These resources are intended for developers skilled in the art designing with Renesas products. You are solely responsible for (1) selecting the appropriate products for your application, (2) designing, validating, and testing your application, and (3) ensuring your application meets applicable standards, and any other safety, security, or other requirements. These resources are subject to change without notice. Renesas grants you permission to use these resources only for development of an application that uses Renesas products. Other reproduction or use of these resources is strictly prohibited. No license is granted to any other Renesas intellectual property or to any third party intellectual property. Renesas disclaims responsibility for, and you will fully indemnify Renesas and its representatives against, any claims, damages, costs, losses, or liabilities arising out of your use of these resources. Renesas' products are provided only subject to Renesas' Terms and Conditions of Sale or other applicable terms agreed to in writing. No use of any Renesas resources expands or otherwise alters any applicable warranties or warranty disclaimers for these products.

(Disclaimer Rev.1.0 Mar 2020)

Corporate Headquarters

TOYOSU FORESIA, 3-2-24 Toyosu,
Koto-ku, Tokyo 135-0061, Japan
www.renesas.com

Contact Information

For further information on a product, technology, the most up-to-date version of a document, or your nearest sales office, please visit:
www.renesas.com/contact/

Trademarks

Renesas and the Renesas logo are trademarks of Renesas Electronics Corporation. All trademarks and registered trademarks are the property of their respective owners.