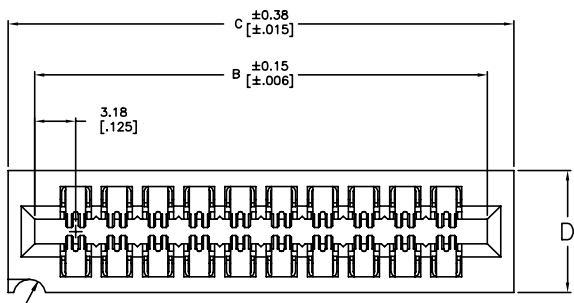
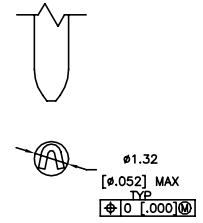
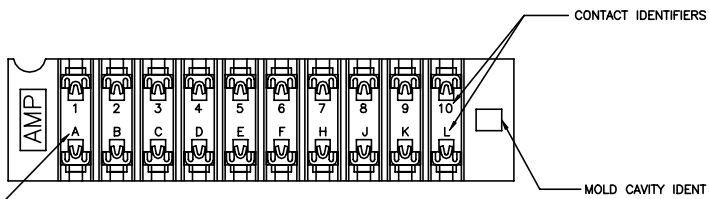
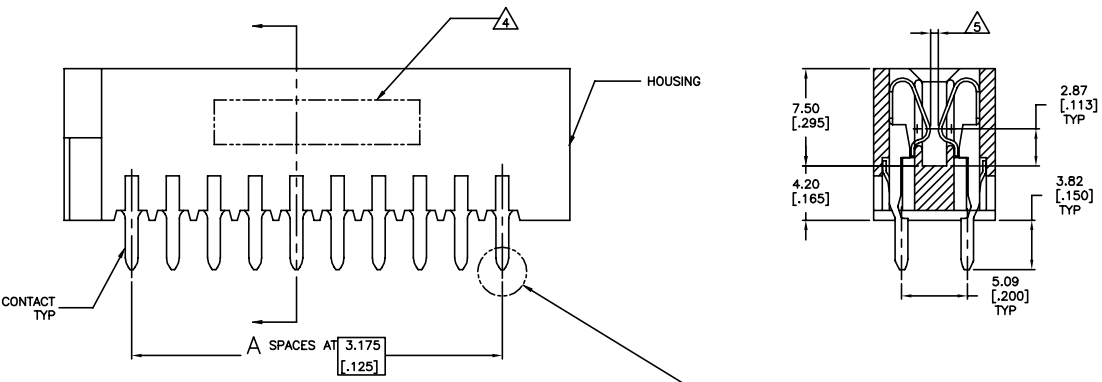


REVISIONS			
REV	DATE	DESCRIPTION	BY
M3		REVISED PER ECO-20-000170	KR JO



POSITION 1 INDICATOR



SCALE 10:1

- △1 HOUSING: GLASS FILLED POLYESTER, BLACK CONTACTS: PHOSPHOR BRONZE
- △2 1.27 m[.000050] MIN THICK NICKEL PLATE ALL OVER, 0.76 m[.000030] MIN THICK GOLD PLATE OVER NICKEL IN CONTACT AREA AND 2.54 m[.000100] MIN THICK TIN-LEAD ON SOLDERTAIL
- △3 1.27 m[.000050] MIN THICK NICKEL PLATE ALL OVER, 1.27 m[.000050] MIN THICK GOLD PLATE OVER NICKEL IN CONTACT AREA AND 2.54 m[.000100] MIN THICK TIN-LEAD ON SOLDERTAIL
- △4 AMP PART NUMBER AND DATE CODE MARKED IN THIS AREA
- △5 ACCEPTS 1.40-1.78[.055-.070] MATING DAUGHTERCARD
- △6 MOLDED CHARACTERS (UPPER & LOWER CASE LETTERS FOLLOWED BY UPPER CASE LETTERS AA, AB, ETC.) OMITTING LETTERS G,I,O, & Q
- △7 1.27 m[.000050] MIN THICK NICKEL PLATE ALL OVER, 0.76 m[.000030] MIN THICK GOLD PLATE OVER NICKEL IN CONTACT AREA AND 2.54 m[.000100] MIN THICK TIN ON SOLDERTAIL
- △8 1.27 m[.000050] MIN THICK NICKEL PLATE ALL OVER, 1.27 m[.000050] MIN THICK GOLD PLATE OVER NICKEL IN CONTACT AREA AND 2.54 m[.000100] MIN THICK TIN ON SOLDERTAIL
- △9 OBSOLETE PARTS: OBSOLETE CIS STREAMLINING PER D.RENAUD/D.SINISI

OBSOLETE	9.40 [.370]	83.44 [3.285]	98.42 [3.125]	23	△	24	8-530671-3
OBSOLETE	9.40 [.370]	134.24 [5.285]	130.18 [5.125]	39	△	40	8-530671-0
OBSOLETE	9.40 [.370]	121.54 [4.785]	117.48 [4.625]	35	△	36	7-530671-9
OBSOLETE	9.40 [.370]	102.49 [4.035]	98.42 [3.875]	29	△	30	7-530671-7
	9.40 [.370]	96.14 [3.785]	92.08 [3.625]	27	△	28	7-530671-6
OBSOLETE	9.40 [.370]	77.089 [3.035]	73.025 [2.875]	21	△	22	7-530671-5
OBSOLETE	9.40 [.370]	64.39 [2.535]	60.32 [2.375]	17	△	18	7-530671-4
	9.40 [.370]	54.86 [2.160]	50.80 [2.000]	14	△	15	7-530671-3
	9.40 [.370]	38.99 [1.535]	34.92 [1.375]	9	△	10	7-530671-2
	9.40 [.370]	26.29 [1.035]	22.22 [.875]	5	△	6	7-530671-1
OBSOLETE	9.40 [.370]	92.14 [3.785]	92.08 [3.625]	27	△	28	6-530671-4
	9.40 [.370]	83.44 [3.285]	98.42 [3.125]	23	△	24	3-530671-3
9 OBSOLETE	9.40 [.370]	134.24 [5.285]	130.18 [5.125]	39	△	40	3-530671-0
OBSOLETE	9.40 [.370]	121.54 [4.785]	117.48 [4.625]	35	△	36	2-530671-9
9 OBSOLETE	9.40 [.370]	102.49 [4.035]	98.42 [3.875]	29	△	30	2-530671-7
9 SUPERSEDED	9.40 [.370]	96.14 [3.785]	92.08 [3.625]	27	△	28	2-530671-6
OBSOLETE	9.40 [.370]	64.39 [2.535]	60.32 [2.375]	17	△	18	2-530671-4
	9.40 [.370]	54.86 [2.160]	50.80 [2.000]	14	△	15	2-530671-3
	9.40 [.370]	38.99 [1.535]	34.92 [1.375]	9	△	10	2-530671-2
	9.40 [.370]	26.29 [1.035]	22.22 [.875]	5	△	6	2-530671-1
	9.40 [.370]	92.14 [3.785]	92.08 [3.625]	27	△	28	1-530671-4
	D	C	B	A	CONTACT FINISH	NO OF POSN	PART NUMBER

THIS DRAWING IS A CONTROLLED DOCUMENT. **TE** TE Connectivity

DESIGNED BY: D. HARDY 128297	DATE: 10/20/97
DRAWN BY: S. STONE 108297	DATE: 10/20/97
CHECKED BY: D. NIKE 108297	DATE: 10/20/97
APPROVED BY: D. NIKE 108297	DATE: 10/20/97
PRODUCT SPEC: 000000	APPLICATION SPEC: 000000
SIZE: A1	SCALE: 5:1
REV: 0.000000	DWG NO: 00779
CUSTOMER DRAWING	DWG NO: 530671

CONNECTOR ASSEMBLY, .125CL X .200CL W/O MOUNTING EARS, .150 SOLDERTAIL, DUAL POSITION, LOW PROFILE

DATE: 11/18