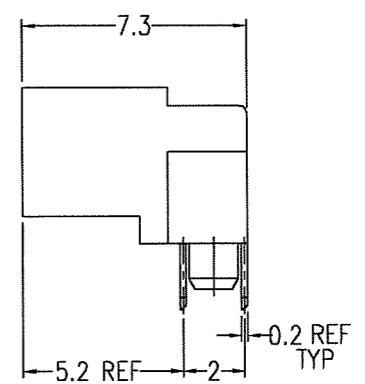
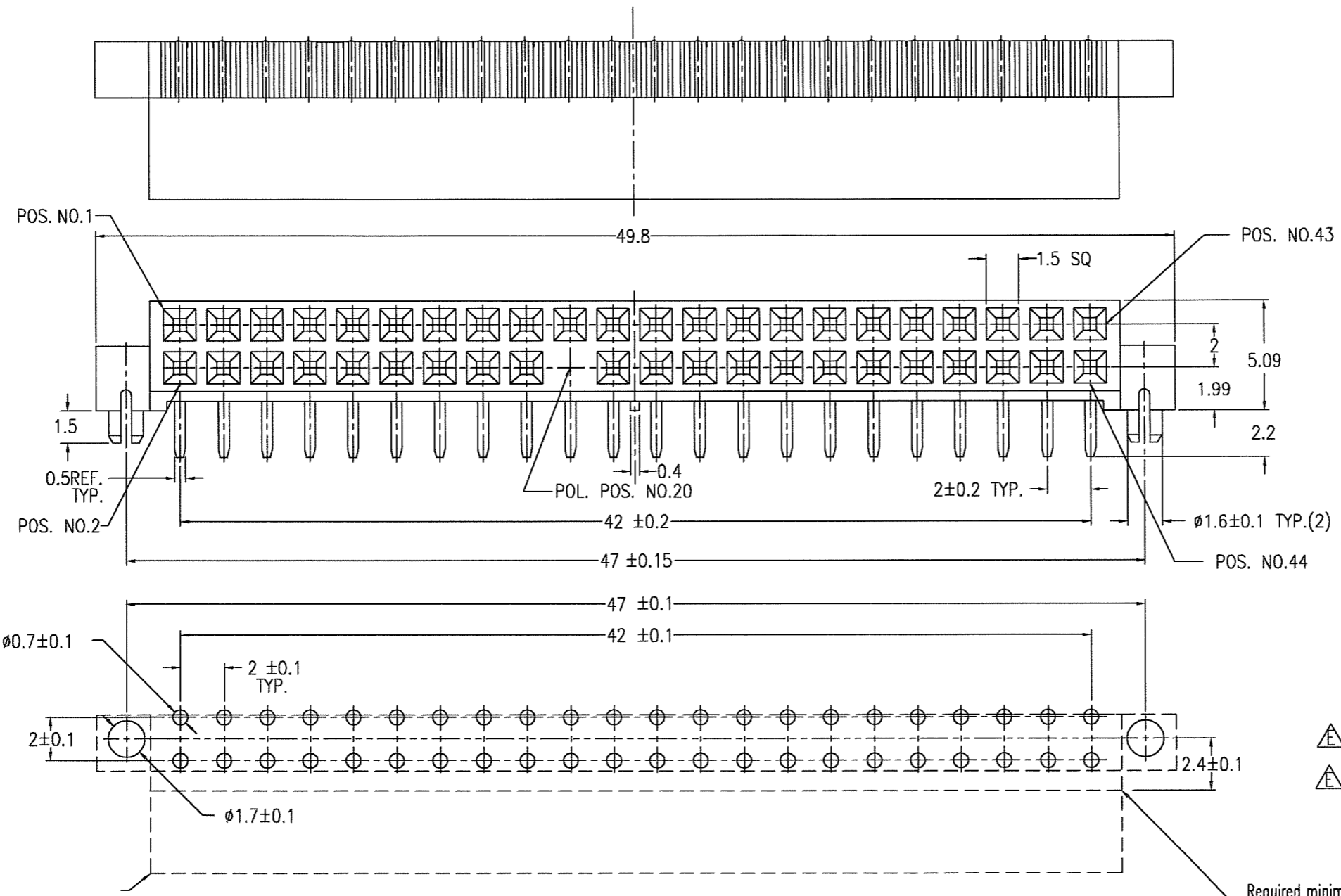


PRODUCT NO.	POS.	POLARIZED POS.
94882-001	2X22	NO.20
△ 94882-001LF	2X22	NO.20



- ① MATL : HOUSING PPS UL94V-0
COLOR BROWN
TERMINAL PHOSPHOR BRONZE
- ② PLATING: CONTACT AREA Au 0.2 μm MIN.
SOLDER TAIL AREA SnPb 1.5 μm MIN.
- 3 CUT SURFACE IS UNPLATED
- 4 GENERAL TOLERANCE : ±0.25
- 5 APPROPRIATE HDR SHOULD BE POLARIZED AT POS. NO.20.
- △ ⑥ 94882-001LF PLATING CONTACT AREA Au 0.2 μm MIN
SOLDER TAIL AREA Au Flash
- △ 7 THIS PRODUCT MEETS EUROPEAN UNION DIRECTIVES AND OTHER COUNTRY REGULATIONS AS DESCRIBED IN GS-22-008.

FCI CONFIDENTIAL

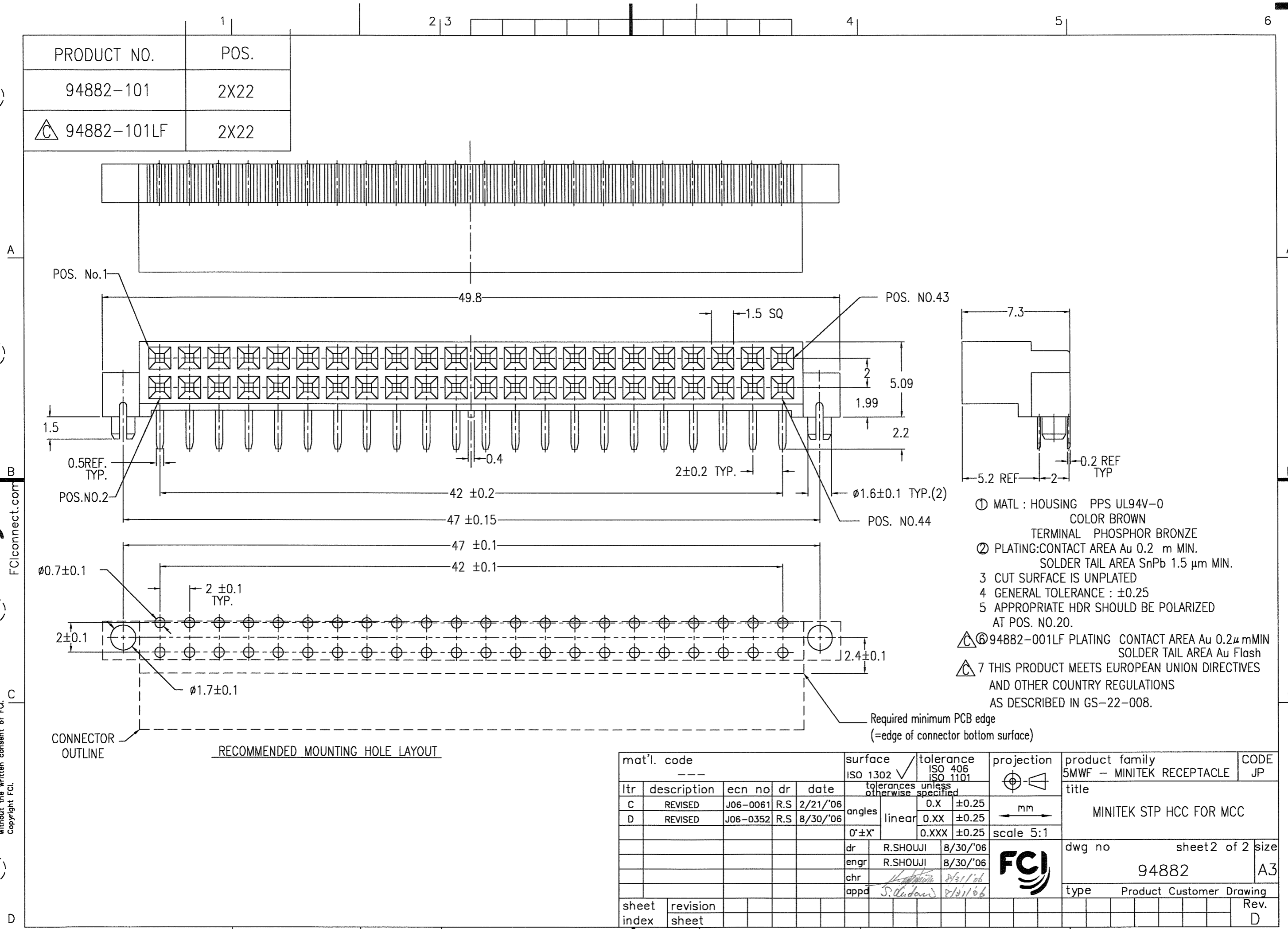


This document is the property of and embodies CONFIDENTIAL and PROPRIETARY information of FCI. No part of the information shown on this document may be used in any way or disclosed to others without the written consent of FCI. Copyright FCI.

mat'l. code		surface		tolerance		projection		product family		CODE	
---		ISO 1302		ISO 406		mm		5MUF - MINITEK TERMINALS		JP	
description		ecn no		dr		date		title			
E REVISED		J06-0061		R.S		2/21/06		MINITEK STP HCC FOR MCC			
F REVISED		J06-0352		R.S		8/30/06					
angles		linear		0.X		±0.25		scale 4:1			
0°±'		0.XXX		±0.25				dwg no		sheet 1 of 2 size	
dr		R.SHOUJI		8/25/06				94882		A2	
enrg		R.SHOUJI		8/30/06				type		Product Customer Drawing	
chr								Rev.		F	
appd											
sheet index		revision sheet		F		1					

This document is the property of and embodies CONFIDENTIAL and PROPRIETARY information of FCI. No part of the information shown on this document may be used in any way or disclosed to others without the written consent of FCI. Copyright FCI.

FCI CONFIDENTIAL



- ① MATL : HOUSING PPS UL94V-0
COLOR BROWN
- ② PLATING: CONTACT AREA Au 0.2 μm MIN.
SOLDER TAIL AREA SnPb 1.5 μm MIN.
- 3 CUT SURFACE IS UNPLATED
- 4 GENERAL TOLERANCE : ±0.25
- 5 APPROPRIATE HDR SHOULD BE POLARIZED
AT POS. NO.20.
- Ⓜ ⑥ 94882-001LF PLATING CONTACT AREA Au 0.2 μm MIN
SOLDER TAIL AREA Au Flash
- Ⓜ 7 THIS PRODUCT MEETS EUROPEAN UNION DIRECTIVES
AND OTHER COUNTRY REGULATIONS
AS DESCRIBED IN GS-22-008.

RECOMMENDED MOUNTING HOLE LAYOUT

mat'l. code				surface		tolerance		projection		product family		CODE
---				ISO 1302 ✓		ISO 406		mm		5MWF - MINITEK RECEPTACLE		JP
				tolerances unless otherwise specified						title		
ltr	description	ecn no	dr	date	angles	linear	0.X	±0.25	scale 5:1		MINITEK STP HCC FOR MCC	
C	REVISED	J06-0061	R.S	2/21/'06			0.XX	±0.25				
D	REVISED	J06-0352	R.S	8/30/'06			0.XXX	±0.25				
				dr	R.SHOUJI	8/30/'06			dwg no		sheet 2 of 2	size
				enr	R.SHOUJI	8/30/'06			94882		A3	
				chr		8/31/06			type		Product Customer Drawing	
				app	S. Odawa	8/31/06					Rev.	
sheet index		revision sheet										D