

DO NOT SCALE FROM THIS PRINT

NOTES:

1.  $\text{C}$  REPRESENTS A CRITICAL DIMENSION.
2. COPLANARITY TO BE WITHIN .006.
3. BURR ALLOWANCE: .0015 MAX.
4. MINIMUM PUSHOUT FORCE: .5 LB.
5. MAXIMUM ALLOWABLE BOW: .002 INCH/INCH AFTER ASSEMBLY.
6. LOAD INSERTS IN DIRECTION OF THE ARROW; FLUSH TO .003" RECESSED.
7. THREADED INSERT MUST BE ABLE TO HANDLE 20 in-oz's OF TORQUE MIN WITHOUT ROTATING OR "LOOSENING".
8. THREADED INSERT RETENTION TO BE 7lbs. MIN.
9. LEADS TO BE FLUSH TO .005 ABOVE THE BODY.

OPP-XX-01-XX-S-X-XX

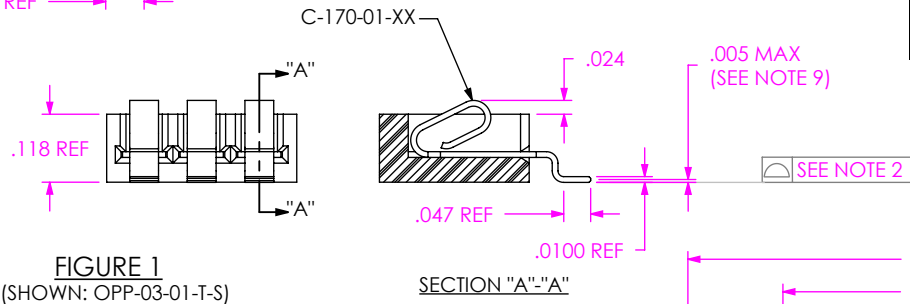
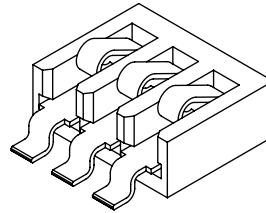
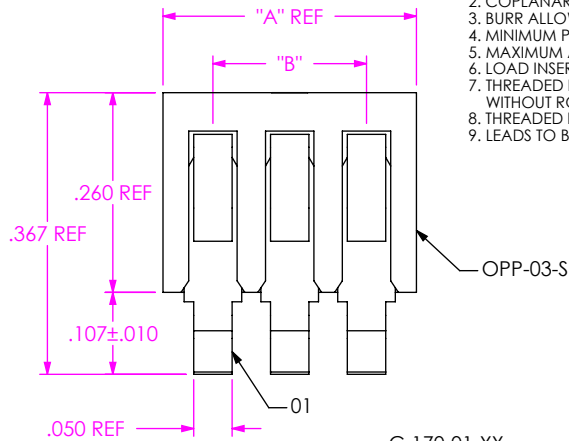
NO OF POSITIONS  
-03, -07, -10

PLATING SPECIFICATION  
-T: TIN (USE C-170-01-T)  
-TM: MATTE TIN (USE C-170-01-T)

ROW SPECIFICATION  
-S: SINGLE (USE OPP-XX-S)

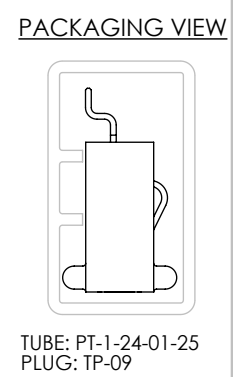
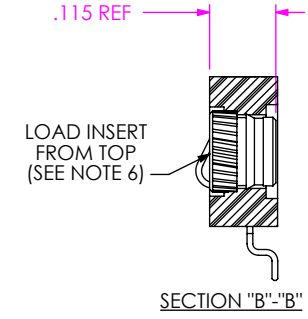
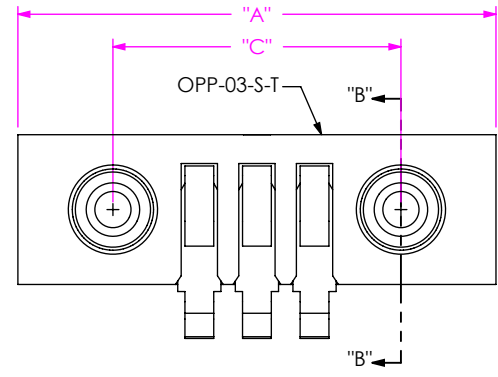
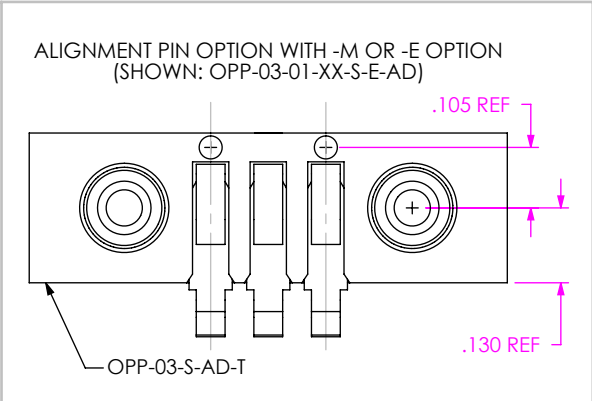
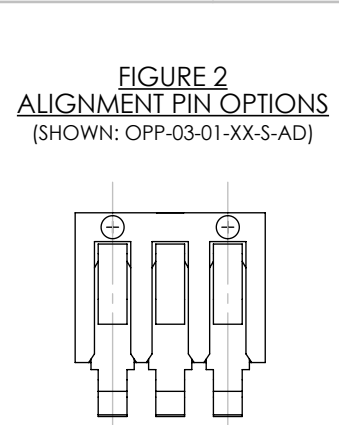
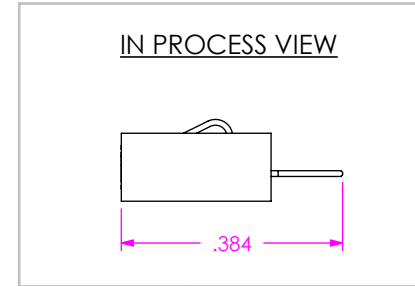
ALIGNMENT PIN OPTION  
-AT: TOP SIDE (USE OPP-XX-S-AT-X)  
-AB: BOTTOM SIDE (USE OPP-XX-S-AB-X)  
-AD: DUAL (TOP & BOTTOM) (USE OPP-XX-S-AD-X)  
BLANK FOR NO ALIGNMENT PIN

THREADED INSERT OPTION  
-E: THREADED INSERT (ENGLISH) (USE INS-14-2-56-115, SEE FIGURE 3)  
(USE OPP-XX-S-XX-T, SEE FIGURE 3)  
-M: THREADED INSERT (METRIC) (USE INS-14-M2-115-N, SEE FIGURE 3)  
(USE OPP-XX-S-XX-T, SEE FIGURE 3)  
BLANK FOR NON-THREADED INSERT

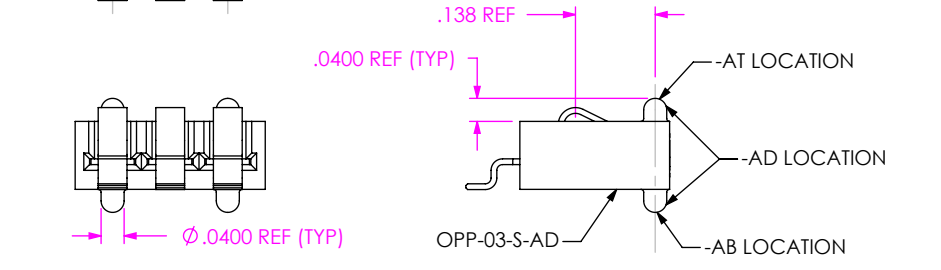


PART NUMBER		
OPTION	INSERT	THREAD
-E	INS-14-2-56-115	2 x 56
-M	INS-14-M2-115-N	M2.0 x 4

FIGURE 3  
THREADED INSERT OPTION  
-M & -E: THREADED OPTIONS (SHOWN: OPP-03-01-XX-S-E)



NUMBER OF POSITIONS	"A" WITHOUT -E OR -M OPTION	"A" WITH -E OR -M OPTION	"B"	"C"
-03	0.330	0.830	0.200	0.500
-07	0.730	1.230	0.600	0.900
-10	1.030	1.530	0.900	1.200



UNLESS OTHERWISE SPECIFIED, DIMENSIONS ARE IN INCHES. TOLERANCES ARE:  
DECIMALS ANGLES  
.XX: ±.01 [.3] 2°  
.XXX: ±.005 [.13]  
.XXXX: ±.0020 [.051]

PROPRIETARY NOTE  
THIS DOCUMENT CONTAINS INFORMATION CONFIDENTIAL AND PROPRIETARY TO SAMTEC, INC. AND SHALL NOT BE REPRODUCED OR TRANSFERRED TO OTHER DOCUMENTS OR DISCLOSED TO OTHERS OR USED FOR ANY PURPOSE OTHER THAN THAT WHICH IT WAS OBTAINED WITHOUT THE EXPRESSED WRITTEN CONSENT OF SAMTEC, INC.

MATERIAL: DO NOT SCALE DRAWING SHEET SCALE: 3:1  
INSULATOR: LCP, COLOR: BLACK  
CONTACT: BECU 17410



520 PARK EAST BLVD, NEW ALBANY, IN 47150  
PHONE: 812-944-6733 FAX: 812-948-5047  
e-Mail: info@SAMTEC.com code 55322

DESCRIPTION: ONE PIECE POWER ASSEMBLY  
DWG. NO. OPP-XX-01-XX-S-X-XX  
BY: ERIC M. 06/15/01 SHEET 1 OF 1