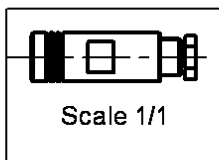
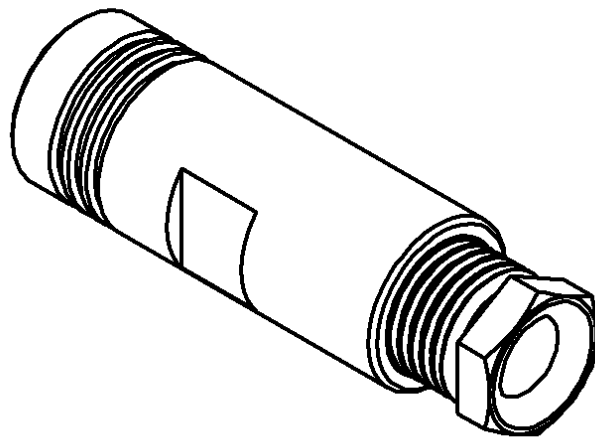
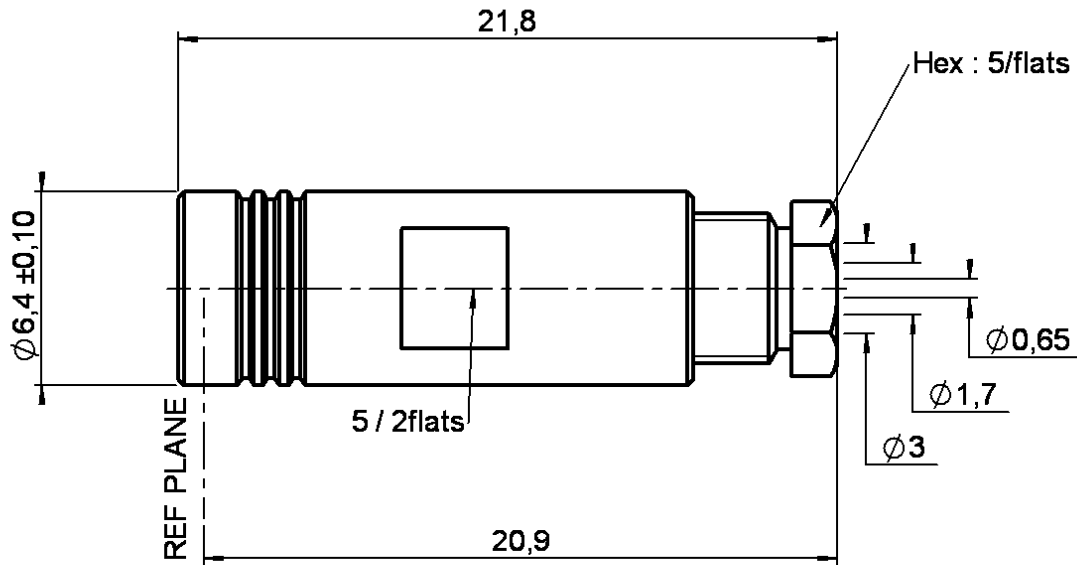


**STRAIGHT PLUG CLAMP TYPE**

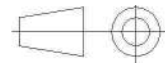
**R114.005.000**

**CABLE 2.6/50+75 S**

Series : SMB



All dimensions are in mm.



| COMPONENTS     | MATERIALS        | PLATINGS (µm)          |
|----------------|------------------|------------------------|
| BODY           | BRASS            | GOLD 0.2 OVER NICKEL 2 |
| CENTER CONTACT | BERYLLIUM COPPER | GOLD 1.3 OVER NICKEL 2 |
| OUTER CONTACT  | BERYLLIUM COPPER | GOLD 0.5 OVER NICKEL 2 |
| INSULATOR      | PTFE             |                        |
| GASKET         | -                |                        |
| OTHERS PARTS   | BRASS            | GOLD 0.2 OVER NICKEL 2 |
| -              | -                | -                      |
| -              | -                | -                      |

Issue : 0721 T

In the effort to improve our products, we reserve the right to make changes judged to be necessary.



**STRAIGHT PLUG CLAMP TYPE**

**R114.005.000**

**CABLE 2.6/50+75 S**

Series : SMB

**PACKAGING**

|            |                   |                   |
|------------|-------------------|-------------------|
| Standard   | Unit              | Other             |
| <b>100</b> | <b>'W' option</b> | <b>Contact us</b> |

**SPECIFICATION**

**QAE 06-02**

**CABLE ASSEMBLY**

**ELECTRICAL CHARACTERISTICS**

| Stripping | a    | b    | c    | d    | e    | f    |
|-----------|------|------|------|------|------|------|
| mm        | 2,50 | 0,00 | 4,50 | 4,50 | 1,20 | 0,00 |

|                                 |                      |                          |
|---------------------------------|----------------------|--------------------------|
| Impedance                       | <b>50</b>            | $\Omega$                 |
| Frequency                       | <b>0-4</b>           | GHz                      |
| VSWR                            | <b>1.25 + 0,0400</b> | x F(GHz) Maxi            |
| Insertion loss                  | <b>0.25</b>          | $\sqrt{F}$ (GHz) dB Maxi |
| RF leakage                      | - ( <b>57</b> )      | - F(GHz) dB mini         |
| Voltage rating                  | <b>335</b>           | Veff Maxi                |
| Dielectric withstanding voltage | <b>1000</b>          | Veff mini                |
| Insulation resistance           | <b>1000</b>          | M $\Omega$ mini          |

Assembly instruction :

Recommended cable(s)

- RG 316
- RG 187
- RG 188
- KX 22A
- RG 179
- RG 174
- KX 3B
- RG 174 FTX
- RG 174
- RG 316
- ECO 316
- K02252D
- ECO 316 D

**MECHANICAL CHARACTERISTICS**

Cable retention

- pull off **110** N mini
- torque **NA** N.cm

|                            |           |           |
|----------------------------|-----------|-----------|
| Center contact retention   |           |           |
| Axial force – Mating end   | <b>10</b> | N mini    |
| Axial force – Opposite end | <b>10</b> | N mini    |
| Torque                     | <b>NA</b> | N.cm mini |

|                    |               |      |
|--------------------|---------------|------|
| Recommended torque |               |      |
| Mating             | <b>NA</b>     | N.cm |
| Panel nut          | <b>NA</b>     | N.cm |
| Clamp nut          | <b>40</b>     | N.cm |
| A/F clamp nut      | <b>5,0000</b> | mm   |

|             |               |             |
|-------------|---------------|-------------|
| Mating life | <b>500</b>    | Cycles mini |
| Weight      | <b>3,0000</b> | g           |

**TOOLING**

| Part Number | Description | Hexagon |
|-------------|-------------|---------|
| .           | .           | .       |

**ENVIRONMENTAL**

|                       |                 |              |
|-----------------------|-----------------|--------------|
| Operating temperature | <b>-65/+165</b> | $^{\circ}$ C |
| Hermetic seal         | <b>NA</b>       | Atm.cm3/s    |
| Panel leakage         | <b>NA</b>       |              |

**OTHERS CHARACTERISTICS**

Issue : 0721 T

In the effort to improve our products, we reserve the right to make changes judged to be necessary.

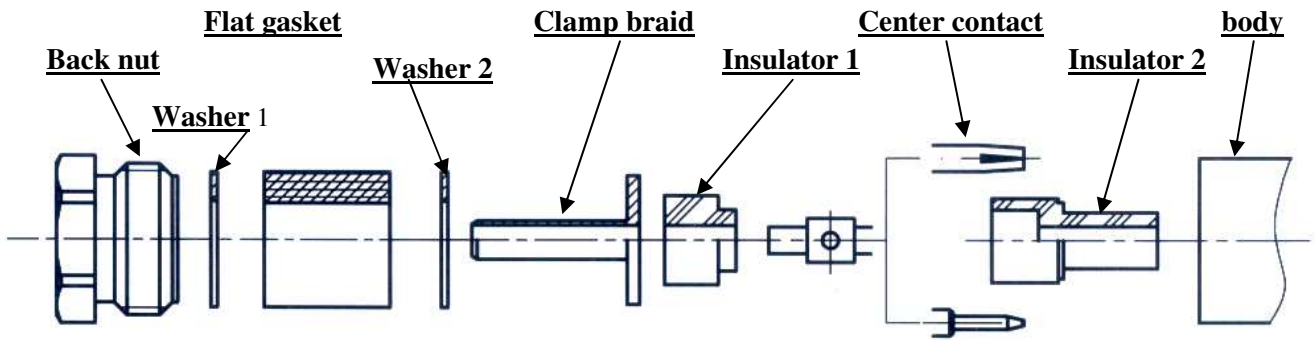


**STRAIGHT PLUG CLAMP TYPE**

**CABLE 2.6/50+75 S**

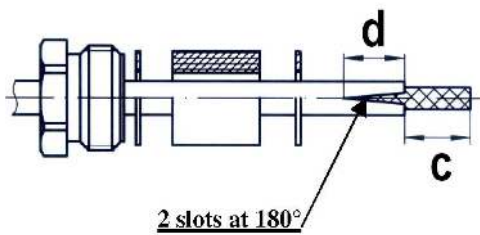
**R114.005.000**

Series : SMB



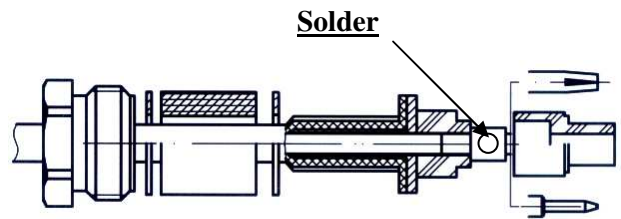
**1**

Slide the back nut, the washer 1, the flat gasket, the washer 2 onto the cable.  
Strip the cable.  
Cut 2 slots in the jacket if necessary.



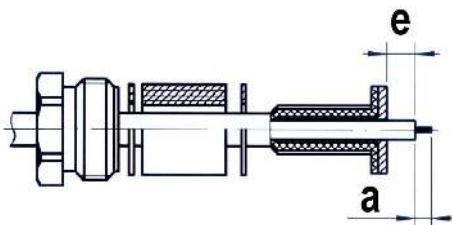
**3**

Slide the first insulator.  
Slide the center contact and solder.  
Slide the second insulator



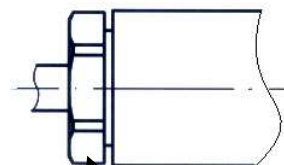
**2**

Slide the clamp braid sleeve.  
Cut the braid flush with the clamp braid sleeve.  
Strip off the diélectric.



**4**

Screw sub-assembly into the connector body with the adapted wrench.  
Recommended coupling torque ( see connector TDS ).



Hex. : see connector TDS

Issue : 0721 T

In the effort to improve our products, we reserve the right to make changes judged to be necessary.

