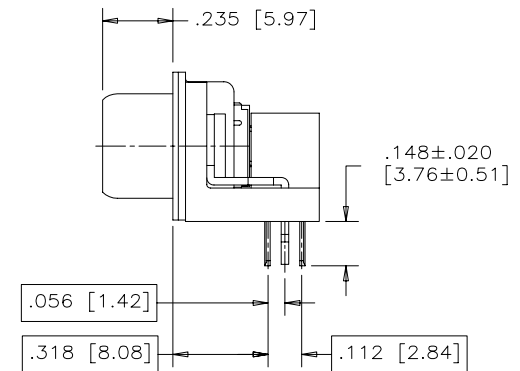
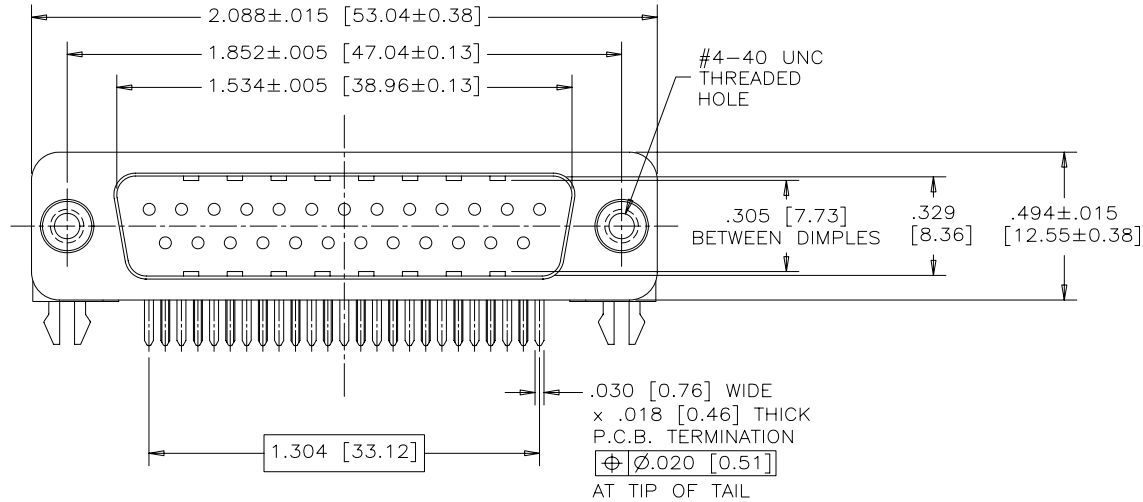
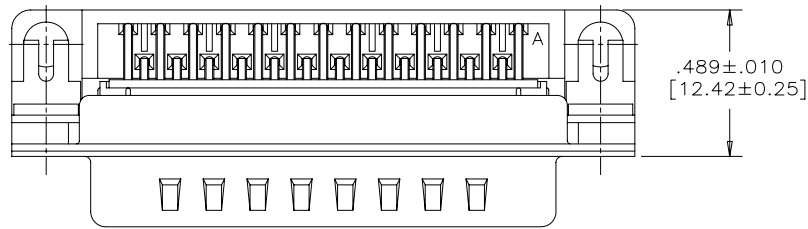


REVISIONS			
REV	ECN, ERN NO.	DATE	APPRD.
B	PROPOSAL DWG (EAR 13768)	SEP28/10	K.L.



NOTES:

- MATERIALS: - SHELLS - NICKEL PLATED STEEL
 - CONTACTS - PHOSPHOR BRONZE PLATED WITH 15μ [0.38μm] MIN GOLD OVER 50μ [1.27μm] MIN NICKEL ON THE MATING AREA AND 100μ [2.54μm] MIN TIN-LEAD ON THE TERMINALS
 - INSULATOR - ENGINEERING THERMOPLASTIC, FLAMMABILITY RATING UL94V-0, BLACK
 - BOARD LOCKS - STEEL, MATTE TIN PLATED OVER NICKEL
 - THREADED INSERTS - STAINLESS STEEL
- CONTACT RESISTANCE: 15 MILLIOHMS MAXIMUM
- INSULATION RESISTANCE: 3000 MEGOHMS MINIMUM
- CURRENT RATING: 5 AMPS MAXIMUM
- OPERATING TEMPERATURE: -40°C TO 85°C
- TOLERANCE, UNLESS INDICATED OTHERWISE, ±.005 [0.13]

ORDERING CODE: **F C C 1 7 - B 2 5 P A - 4 1 3**

SERIES _____
SIZE/NUMBER OF CONTACTS _____
CONNECTOR STYLE _____
TERMINATION TYPE _____
MOUNTING _____

MODIFIER
 3=SPECIAL MATERIAL REQUIREMENTS
 NICKEL PLATED SHELLS
 STAINLESS STEEL THREADED INSERTS

FILTER CAPACITANCE
 1=470 pF ±15%
 REFER TO AMPHENOL CATALOGUE FOR FILTER PERFORMANCE CHARACTERISTICS

THIS DOCUMENT CONTAINS PROPRIETARY INFORMATION AND SUCH INFORMATION MAY NOT BE DISCLOSED TO OTHERS FOR ANY PURPOSE OR USED FOR MANUFACTURING PURPOSES WITHOUT WRITTEN PERMISSION FROM AMPHENOL CANADA CORP.

MATERIAL -----	DRAWN <i>K.SOBEL</i> DATE <i>SEP22/10</i>	Amphenol Canada Corp.
	DESIGNED	
	CHECKED	
	I. E. APPRD.	
FINISH -----	Q. A. APPRD.	FCC17 FILTERED D-SUB, 25 SIZE PIN, RIGHT ANGLE, .318 [8.08] F/P, PLASTIC BRACKET, BOARDLOCK, #4-40 THREAD, SPECIAL MATERIAL REQUIREMENTS
	DWG. APPRD. <i>K.LAMBIE</i> DATE <i>SEP22/10</i>	
	ENG. REL. NO.	
	REF. <i>EAR 13767 & 13768</i>	
DIMENSIONS ARE IN INCHES [mm] CODE ID. NO. 03554		DWG. DRAWING NO. P-FCC17-B25PA-413
SCALE <i>3/1</i> WT. ----- SURF. ----- SHEET 1 of 1		REV. B