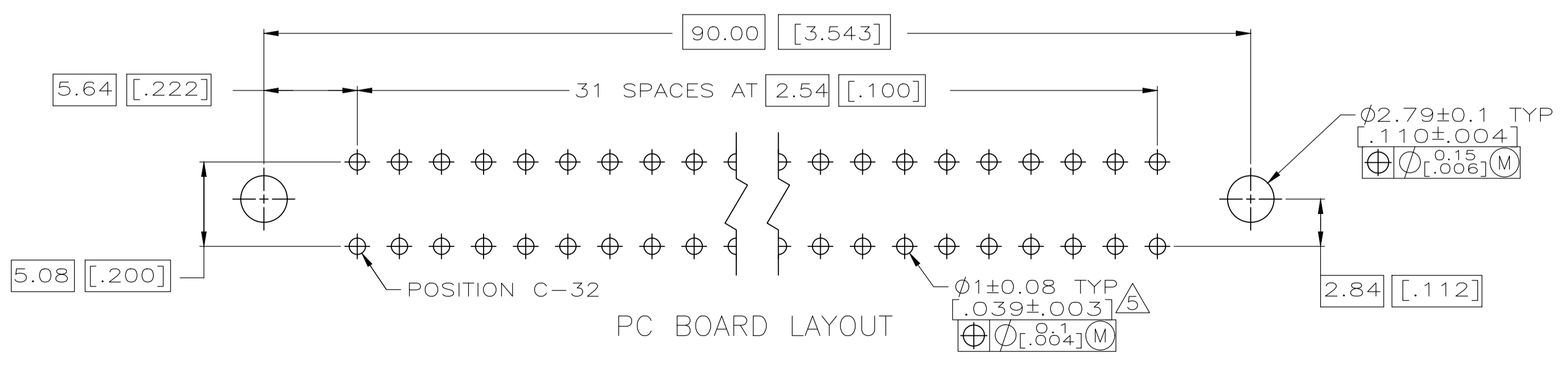
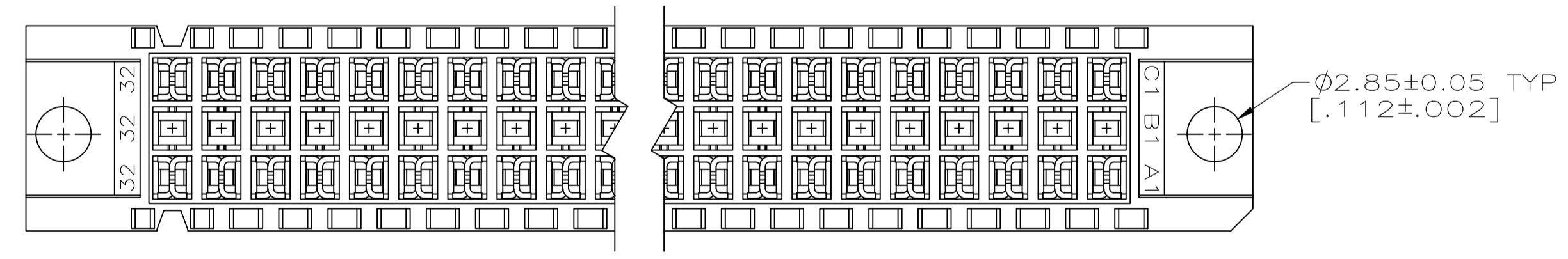
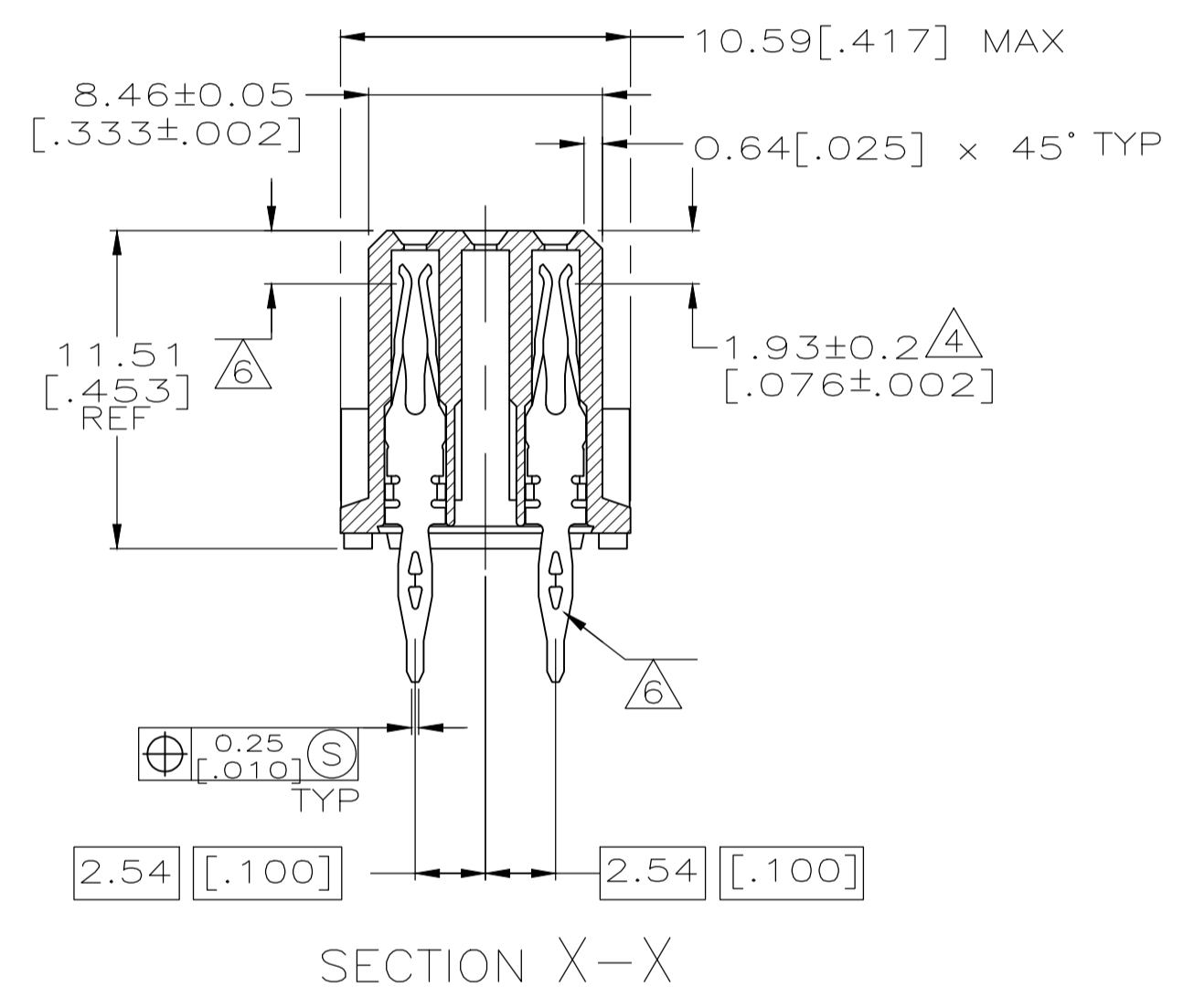
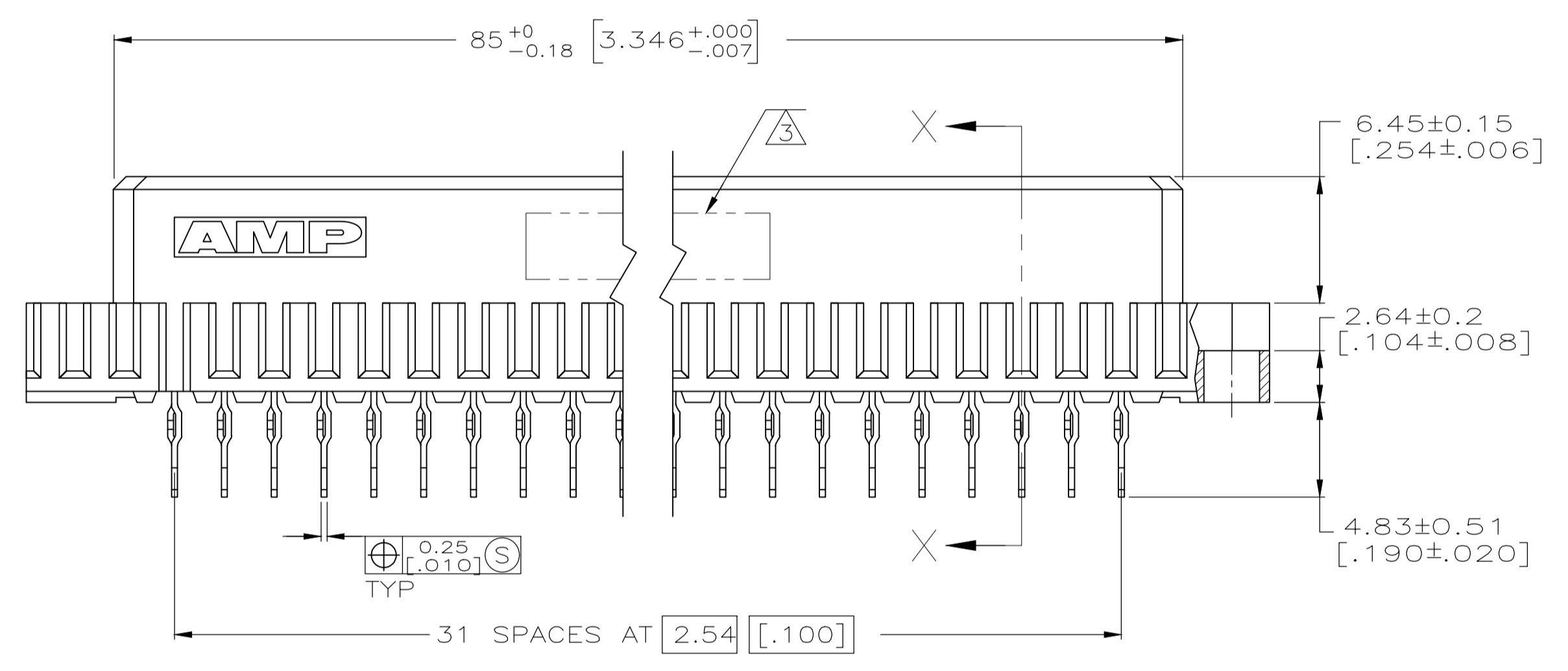
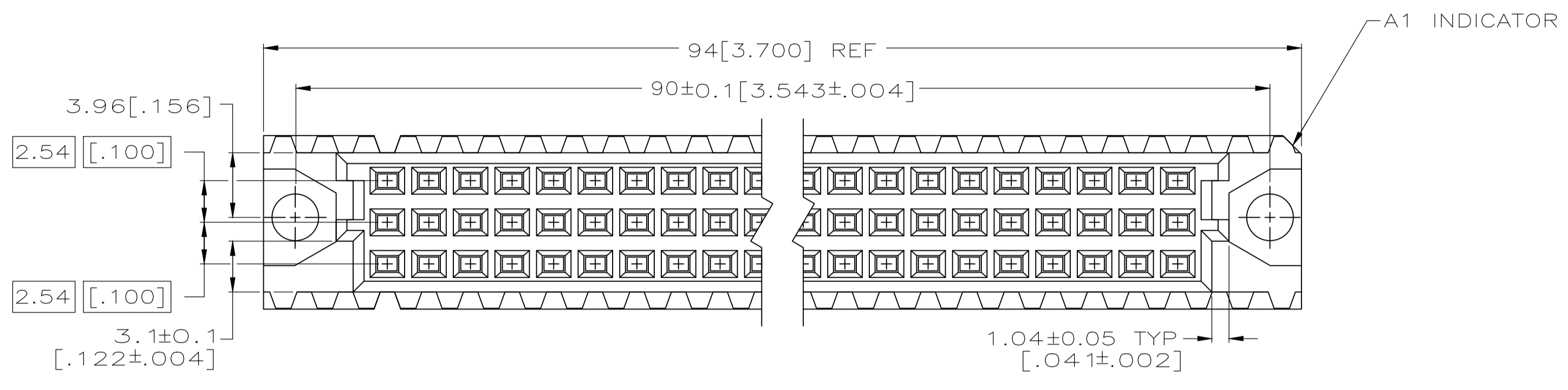


REVISIONS				
P	LTR	DESCRIPTION	DATE	BY
A		REVISED PER ECO-20-002189	16MAR2020	SY HL

- ① HOUSING MATERIAL: GLASS-FILLED POLYMER.
- ② CONTACT MATERIAL: COPPER ALLOY.
- ③ PART NUMBER, DATE CODE IDENTIFICATION, CSA LOGO IN THIS APPROXIMATE AREA.
- ④ POINT OF MEASUREMENT FOR GOLD.
- ⑤ ACTION PIN POSTS REQUIRE 1.57[.062] MIN THICK PC BOARD. RECOMMENDED PC BOARD HOLES ARE  $\varnothing 1.51 \pm 0.2$  [.0453 ± .001] DRILLED HOLE WITH 0.2-0.07[.001-.003] COPPER AND 0.008[.0003] MIN TIN-LEAD PLATING. FINISHED HOLE AFTER PLATING,  $\varnothing 0.94-1.09$  [.037-.043].
- ⑥ CONTACT FINISH: DIN 41612 CLASS 2 ON CONTACT AREA. TIN PLATE ON POSTS.



OBsolete	⑥	1 THRU 32	X	=	X	64	5535059-5
⑥		1 THRU 32	X	-	X	64	5535059-4
FINISH	POSITIONS LOADED	C	B	A	NO. OF LOADED POSITION	ASSY PART NUMBER	
THIS DRAWING IS A CONTROLLED DOCUMENT.		DIN J. POLIGNONE 03JUN05		TE Connectivity			
DIMENSIONS: mm [INCHES]		TOLERANCES UNLESS OTHERWISE SPECIFIED:		ASSY, REC, EUROCARD, TYPE C, LEAD-FREE, 64/96 POS, 4.83 TOOLLESS PRESS-FIT.			
0 PLC ± -		1 PLC ± -		APVD A. SHARPE 03JUN05			
2 PLC ± 0.13[.005]		3 PLC ± -		APPLICATION SPEC			
4 PLC ± -		ANGLES ± -		SIZE CAGE CODE DRAWING NO			
MATERIAL ①②		FINISH ⑥		WEIGHT 0.000000		A1 00779 C=5535059	
CUSTOMER DRAWING		SCALE 4:1		SHEET 1 of 1		REV A	