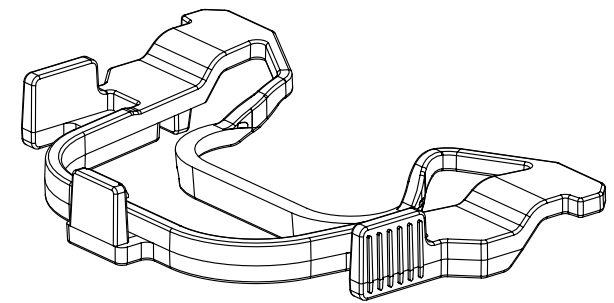
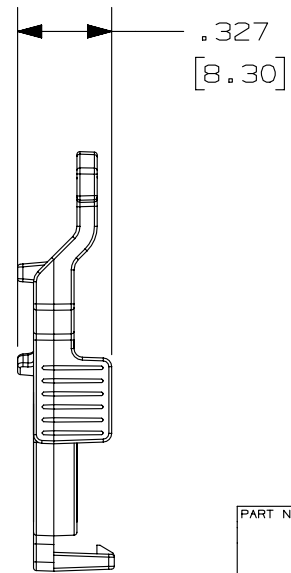
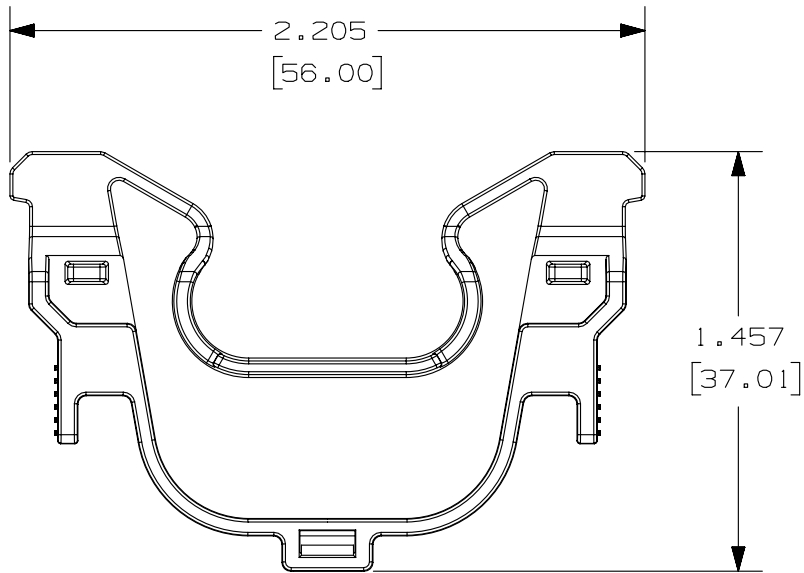
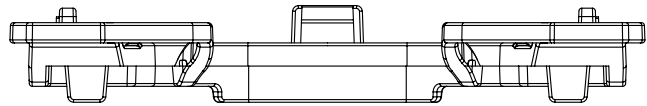


THIS COPY IS PROVIDED ON A RESTRICTED BASIS AND IS NOT TO BE USED IN ANY WAY DETRIMENTAL TO THE INTERESTS OF PANDUIT CORP.

PANDUIT PART NUMBER	COLOR	WEIGHT (APPROX)
QPPLD8-X	RED	0.037LB [17.1 g]

- NOTES:
1. SEE CURRENT CATALOG FOR VARIOUS APPLICATIONS.
 2. THE LOCK-IN DEVICE IS DESIGNED FOR QPP8** EIGHT-POSITION PLUG PACKS.
 3. DIMENSIONS IN BRACKETS ARE IN METRIC.
 4. PACKAGE CONTAINS TEN LOCK-IN DEVICES.
 5. TWO LOCK-IN DEVICES ARE RECOMMENDED TO LOCK-IN ONE QPP8** EIGHT-POSITION PLUG PACK.



PART NUMBER		QPPLD8-X	
TITLE			
QUICKNET 8 POSITION PLUG PACK LOCK-IN DEVICE			
CUSTOMER DRAWING			
ITEM REVISION NAME		M02802DJ/02	
DATASET FILE NAME		M02802DJ_DC33/02B	
UNLESS OTHERWISE SPECIFIED, DIMENSIONAL TOLERANCES ARE: IN [mm]		MATERIAL:	
.x ± .xxx ± .010 [.3]		PC	
.xx ± .03 [.8] ANGLES ±		DRAWING NUMBER:	
THIRD ANGLE PROJECTION		02802-33	
DRAWN BY	DATE	CHK	SCALE
AFW	3/3/08	WFM	NONE
REV	DATE	BY	CHK
APR	DESCRIPTION		ECN
SHT 1 OF 1		SIZE A	

REV	DATE	BY	CHK	APR	DESCRIPTION	ECN
1	5/22/14	JSP	REFR	TMBA	A. REVISED DRAWING TITLE BLOCK.	02802-33
R	03-03-08	AFW	WFM	REGA	RELEASED TO PRODUCTION	02802-33

D10100DA/14