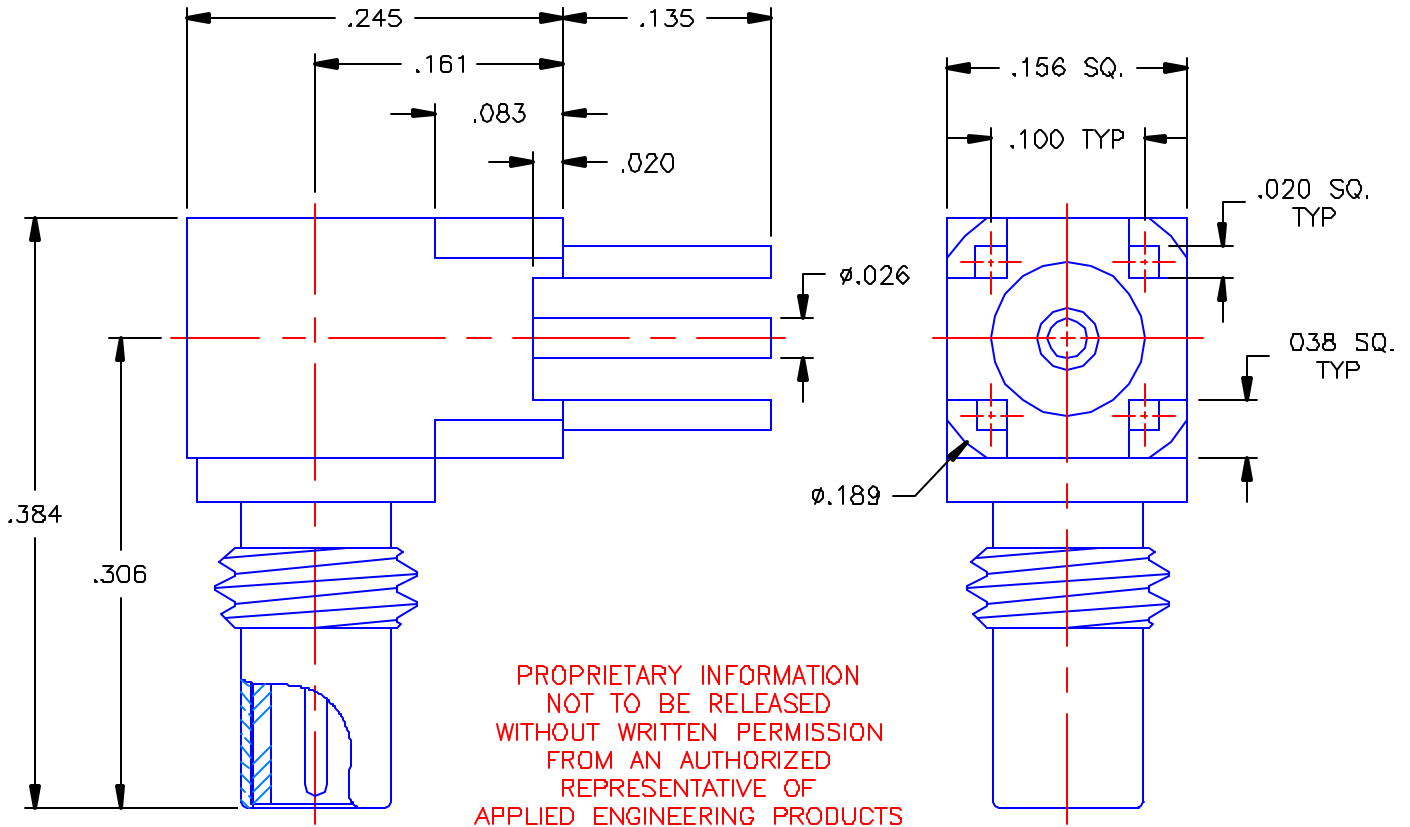


REVISIONS			
REV	DESCRIPTION	DATE	APPROVED
-	INITIAL RELEASE	09/01/00	A.M.




NOTES.

MATERIALS:

1. BODY & CAP = BRASS PER ASTM B16, ALLOY C36000, TEMPER H02.
2. INSULATORS = VIRGIN WHITE TEFLON PER ASTM D1710, GRADE 1, TYPE I, CLASS "A".
3. ALL OTHER METAL PARTS = BERYLLIUM COPPER PER ASTM B196, ALLOY C17300, TEMPER T004.

FINISHES:

1. CONTACTS = GOLD PLATE PER MIL-G-45204, TYPE II, CLASS 1, GRADE C, OVER .00010 TO .00020 STRESS FREE SULFAMATE NICKEL PER QQ-N-290.
2. ALL OTHER METAL PARTS = GOLD PLATE PER MIL-G-45204, TYPE II, CLASS 0, GRADE C, OVER .00010 TO .00020 COPPER STRIKE PER MIL-C-14550.

UNLESS OTHERWISE SPECIFIED DIMENSIONS ARE IN INCHES TOLERANCES ON		DWN: A.M.	DATE 08/31/00	 APPLIED ENGINEERING PRODUCTS 104 John W. Murphy Dr. New Haven, CT 06513
		CHKD: D.N.	DATE 09/01/00	
DECIMAL	ANGLE	APVD: D.J.C.	DATE 09/01/00	
		SSMC RIGHT ANGLE JACK P.C.B. RECEPTACLE		
REFERENCE:		MATERIALS & FINISHES:		SIZE
ORIGINATOR, A.M. DATE: 08/31/00		SEE NOTES		A
				FSGM NO.
				19505
				DWG NO.
				7010-1511-050
				REV
				-
				SCALE
				8:1
				SHEET
				1 OF 1

7010-1511-050