

PART NUMBER	REV	TERMINATOR	FEED TYPE	DESCRIPTION
1530330-1	A	LEADMAKER	MECH POST FEED	CUTS CARRIER
1530330-2	A	BENCH	MECH PRE FEED	CUTS CARRIER
1530330-6	A	LEADMAKER	MECH POST FEED	CONTINUOUS CARRIER
7-1530330-1	A	LEADMAKER	MECH POST FEED	-1 AND SPARE PARTS
7-1530330-2	A	BENCH	MECH PRE FEED	-2 AND SPARE PARTS
7-1530330-6	A	LEADMAKER	MECH POST FEED	-6 AND SPARE PARTS
7-1530330-7	A	-	-	SPARE PARTS KIT

CRIMP	SIZE	TYPE	RANGE
WIRE	1.17 [.046 IN]	F	0.22-0.35mm ²
INSUL	1.57 [.062 IN]	O	Ø1.27 [.05 IN] MAX

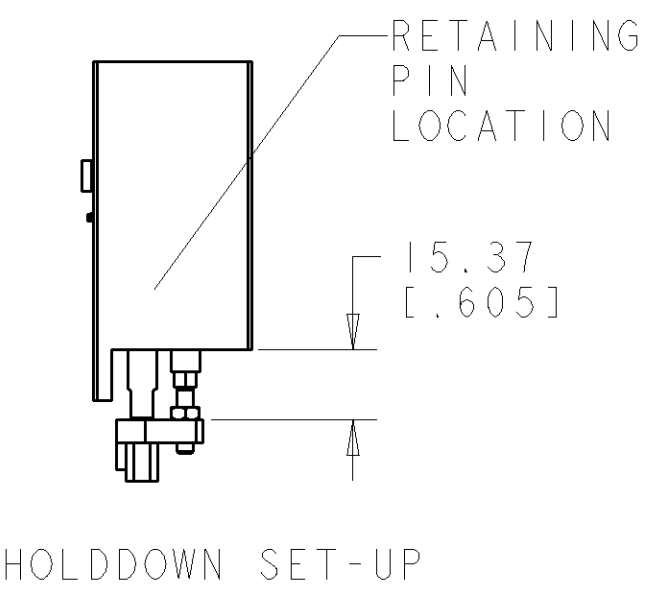
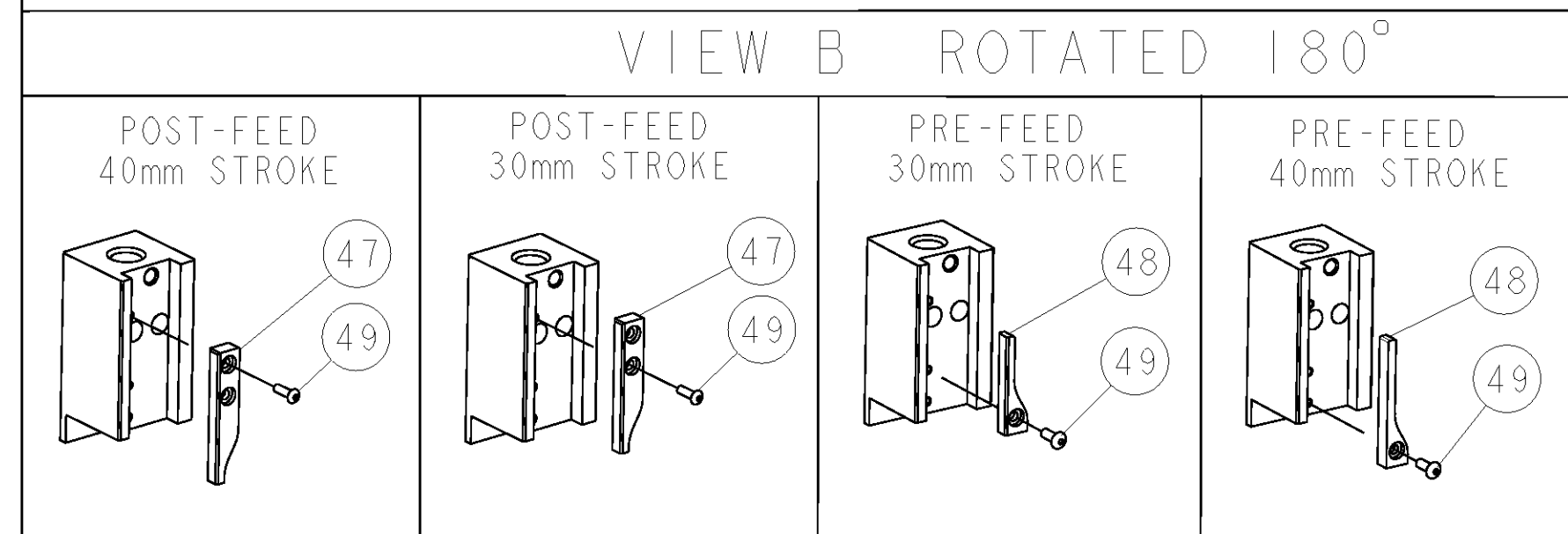
WIRE STRIP LENGTH 3.04-3.42 [.120-.135] APPL INSTRUCTIONS 408-8322 & 408-8490

TERMINAL APPL SPEC	NONE	FEED
	-	7.47 [.294 IN]

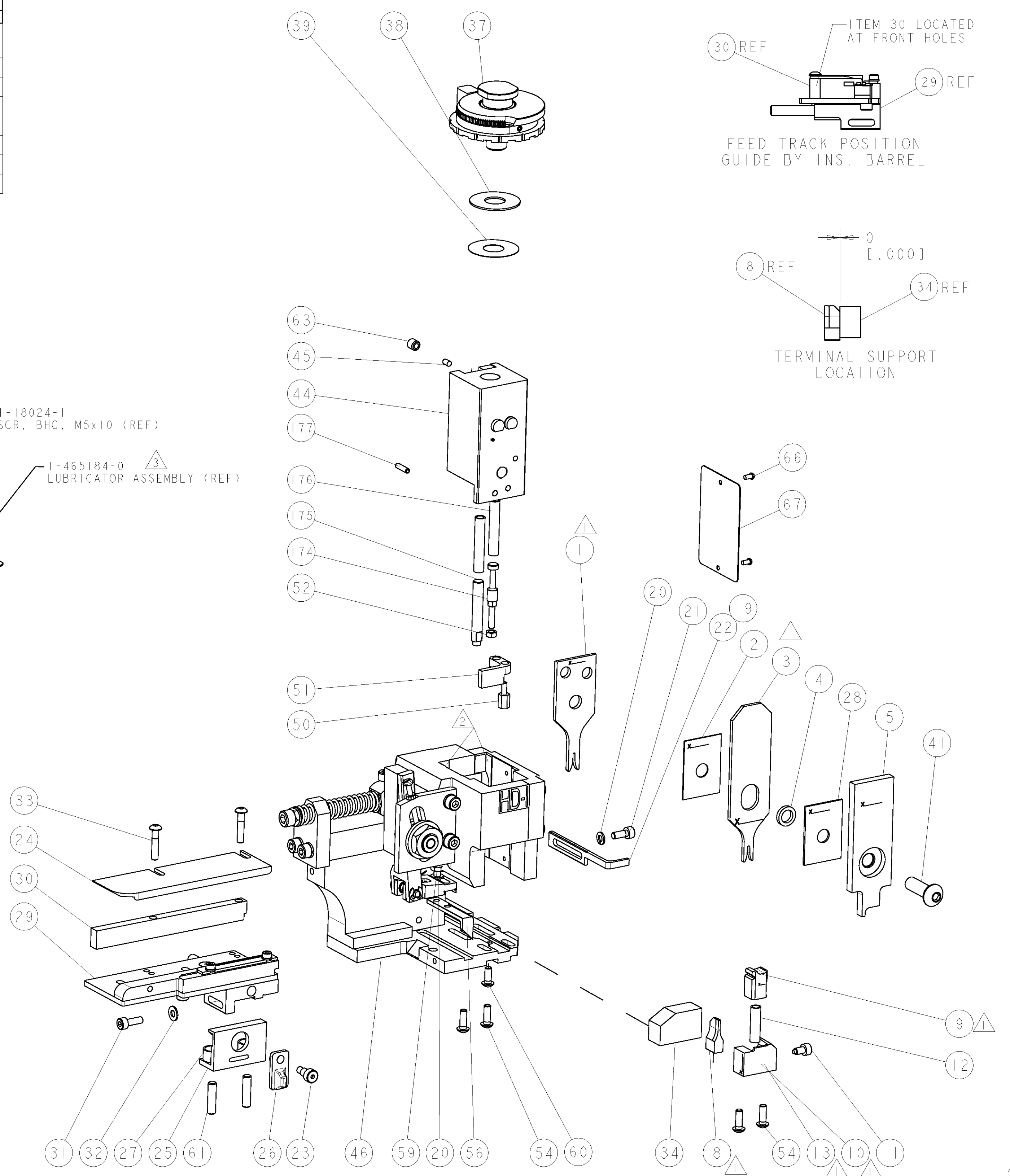
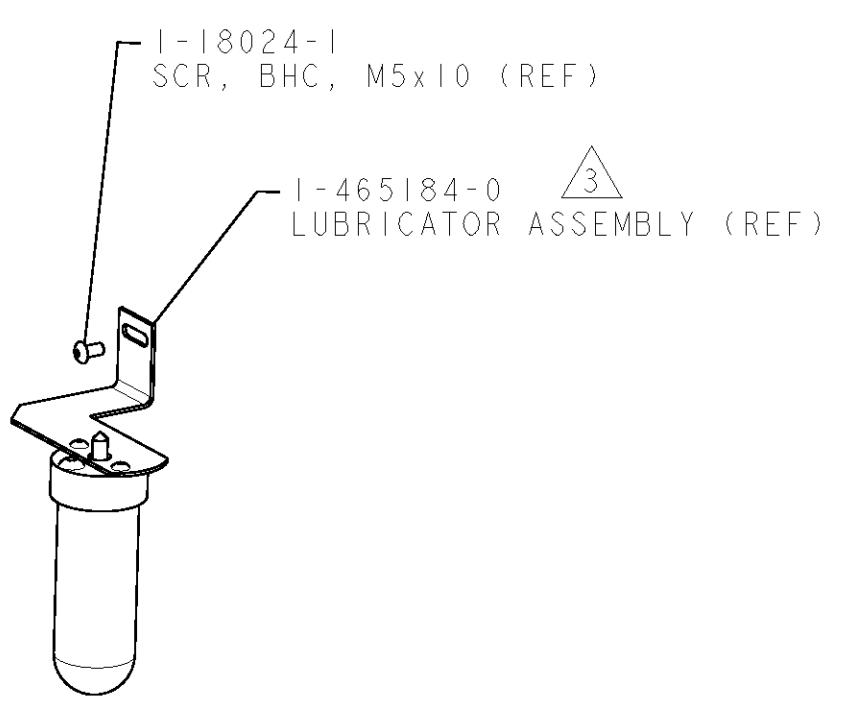
TE PN	MFR PN
2113120-1	13597856

WIRE SIZE	CRIMP HEIGHT	REF SETTING
0.35mm ²	.79 ±0.05 [.031 ±.002 IN]	A9
0.22mm ²	.70 ±0.05 [.028 ±.002 IN]	B7

- △ RECOMMENDED SPARE PARTS.
- △ GREASE RAM, CAM, CAM FOLLOWER AND FEED ROD LIGHTLY.
- △ CERTAIN TERMINALS REQUIRE LUBRICATION. REFER TO THE APPLICATOR INSTRUCTION SHEET FOR MORE INFORMATION.
- 4. LUBRICATE DAILY PER THE APPLICATOR INSTRUCTION SHEET SUPPLIED WITH THE APPLICATOR.



*** WARNING**
ON INSTALLATION, SET WIRE DISC TO LARGEST WIRE SIZE SETTING. USE OF SETTINGS BELOW MIN. REQUIRED CRIMP HEIGHT SETTING WILL CAUSE DAMAGE TO CRIMP TOOLING.



LOC	DIST	REV	DATE	DWN	APPR
A	66	1	26MAY2010	RH	SX
		2	28MAY2010	RH	SX
		A	10SEP2010	LG	GB

QTY	UNIT	DESCRIPTION	DATE	DWN	APPR
1		993111-8	PIN, SLOTTED SPRING 3.0 X 12.0		177
2		3-22280-7	SPRING, COMPRESSION		176
1		1752353-1	GUIDE PIN, HOLDDOWN		175
1		1901680-1	GUIDE PIN, HOLDDOWN		174
1		1338705-3	DOCUMENTATION PACKAGE		71
1		461264-5	PLATE, IDENTIFICATION		67
2		21017-2	SCREW, DRIVE		66
1		3-18031-0	SCR, SET, CUP POINT M6 X 6.0		63
2		2-18032-5	SCR, SET, FLT POINT M5 X 20.0		61
1		18024-7	SCR, BTN SKT HD CAP (M4 X 10.0)		60
1		5-18022-2	SCR, HEX HD CAP M4 X 8.0		59
1		1338685-1	PAWL, FEED		56
4		18024-8	SCR, BTN SKT HD CAP (M4 X 12.0)		54
1		1-18030-0	NUT, HEX, REG M3.5		52
1		1901681-1	HOLDDOWN, TERMINAL		51
1		1-1752354-8	STANDOFF, HOLD-DOWN		50
1		18024-3	SCR, BTN SKT HD CAP (M3 X 10.0)		49
1		1338675-1	CAM, UNIVERSAL PRE FEED		48
1		1338676-1	CAM, UNIVERSAL POST-FEED		47
1		1320999-3	APPLICATOR SUBASSEMBLY, HDI		46
1		690191-1	PLUG, NYLON		45
1		1633724-1	RAM, (SIDE FEED)		44
1		2-18024-6	SCR, BTN SKT HD CAP (M8 X 25.0)		41
1		690125-1	SHIM SUB-ASSY		39
1		469367-7	SHIM		38
1		879103-3	FINE ADJUST HEAD ASSEMBLY		37
1		1752356-6	SUPPORT, TERMINAL		34
2		1-18024-0	SCR, BTN SKT HD CAP (M4 X 20.0)		33
1		18027-2	WASHER, FLAT, REG M4		32
1		1-18023-2	SCR, SKT HD CAP M4 X 12.0		31
1		1320908-4	SPACER, STRIP GUIDE		30
1		1633073-1	STRIP GUIDE ASSEMBLY		29
1		1-455888-0	SPACER, CRIMPER		28
2		1-22284-0	SPRING, COMPRESSION		27
1		356835-1	LEVER, DRAG RELEASE		26
1		240792-1	DRAG, TERMINAL		25
1		1320928-1	PLATE, STRIP GUIDE		24
1		980371-4	SCR, SKT HD SHLDR 5.0 DIA X 6.0		23
1		690472-2	STRIPPER		22
1		1-18023-1	SCR, SKT HD CAP M4 X 10.0		21
2		18025-2	WASHER, SPRG LOCK, REG M4		20
1		690472-1	STRIPPER		19
1		1338684-2	SHEAR HOLDER, FRONT		13
1		3-22280-3	SPRING, COMPRESSION		12
1		356885-5	STOP, SHEAR		11
1		1-1320921-0	SHEAR HOLDER, FRONT, CUT		10
1		462006-6	FLOATING SHEAR, FRONT		9
1	2	7-1633703-2	ANVIL, COMBINATION		8
1		-	-		7
1		-	-		6
1		2-455889-0	DEPRESSOR, SHEAR		5
1		1-238011-0	BLOCK, CRIMPER SPACER		4
1	2	3-1583690-7	CRIMPER, INSUL O		3
1		455888-5	SPACER, CRIMPER		2
1	2	5-568176-2	CRIMPER, WIRE		1

QTY	UNIT	DESCRIPTION	ITEM NO						
-77	-76	-72	-71	-6	-2	-1	PART NO	DESCRIPTION	ITEM NO