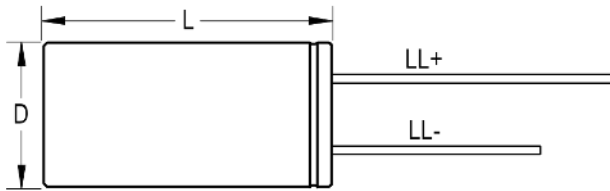
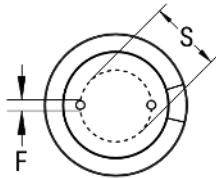


SIDE VIEW



TERMINAL END VIEW



Click [here](#) for the 3D model.

Dimensions

D	10mm +/-0.5mm
L	15mm +2mm
S	5mm +/-0.5mm
LL Negative	15mm MIN
LL Positive	20mm MIN
F	0.6mm NOM

Packaging Specifications

Packaging	Bulk, Bag
Packaging Quantity	3000

General Information

Series	ESK
Dielectric	Aluminum Electrolytic
Description	Single Ended, Aluminum Electrolytic
RoHS	Yes
Lead	Wire Leads
AEC-Q200	No

Specifications

Capacitance	1,000 uF
Capacitance Tolerance	20%
Voltage DC	16 VDC, 20 VDC (Surge)
Temperature Range	-40/+85°C
Rated Temperature	85°C
Life	2000 Hrs
Dissipation Factor	16% 120Hz 20C
Ripple Current	630 mAmps (120Hz 85C)
Leakage Current	160 uA (2min 20°C)
Impedance Ratio at -25C	5
Impedance Ratio at -40C	6