

RFCT-SMA-CAP-GS-3: METAL PROTECTIVE CAP WITH GASKET AND CHAIN FOR SMA JACK, RATED TO IP67

Material and Plating:

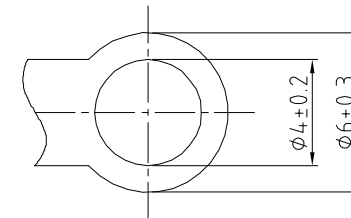
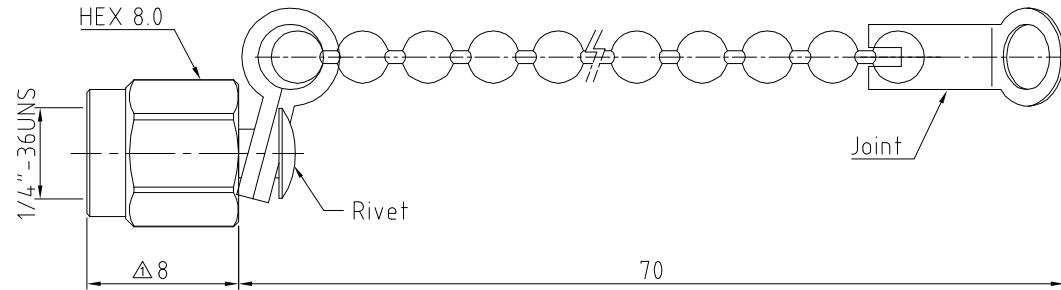
1. Shell: Brass, gold plated.
2. Gasket: Silicon, color: red.
3. Rivet: Brass, gold plated.
4. Chain: Brass, Nickel plated.
5. Joint: Stainless steel.

Environmental:

1. This product has been tested to IP67.
2. In order to achieve IP67 this cap is intended for use in conjunction with all rear mount SMA connectors from the GradConn Nautilus range.
3. GradConn will accept no responsibility for the performance of this cap if it is used with connectors not from the Nautilus range.

Notes:

1. In order to achieve IP67 sealing, then at least 5.64mm of thread on the SMA bulkhead jack is required. If there is less than 5.64mm thread then the cap will not achieve IP67. Contact GradConn for more information.
2. It's likely if this cap is used with Front Mount SMA connectors from GradConn's Nautilus range that the cap will not offer IP67 sealing due to the lack of thread depth, therefore this cap is not recommended to be used in applications with front mount SMA where an IP rating is required.
3. Operating temperature: -40°C~+125°C.
4. Caps to be installed finger tight only. Do not overtighten.



REV. DATE & DRN	10 17/05/19 - NYW RELEASE
	11 27/11/19 - NYW
	Δ AMEND CAP DEPTH.
	ADD NOTE 1.
	12 NYW
	17 ADD ENVIRONMENTAL INFO.
	ADD NOTE 1.
	13 27/05/20 - NYW
	AMEND ENVIRONMENTAL 2.
	ADD NOTE 3.
	14 06/08/20 - NYW
	15 25/05/21 - NYW
	ADD NOTE 4.

Scale: NTS	THIRD ANGLE	Unstated Tolerances:
Drawn: NYW		X ±0.2
App'd: XXX	Title SMA CAP	.XX ±0.2
Date: 25 MAY '21	Revision: 1.5	.XXX ±0.2
	Unit: mm	ANGLES N/A

IP67/68 Rated Cables

www.gradconn.com

Type: RFCT-SMA-CAP-GS-3
RFCT-SMA-CAP-GS-3
Drawing Number:
Sheet 1 of 1
Drawing © E and O E