

REVISIONS

P	LTR	DESCRIPTION	DATE	DWN	APVD
B2		PART 2-284042-2 ADDED	19FEB2019	RK	PS

NOTES:

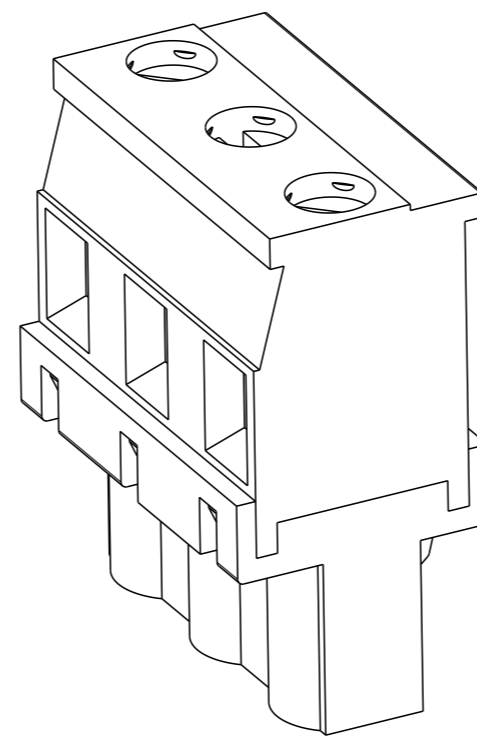
- MATERIALS & FINISH
 HOUSING : PA6.6 , UL94 V0, COLOUR -GREEN
 SCREW M3 : COPPER ALLOY, NICKEL PLATED
 CLAMP : COPPER ALLOY, NICKEL PLATED
 CONTACT : COPPER ALLOY, TIN PLATED
- MECHANICAL
 RECOMMENDED TIGHTENING TORQUE : 0.5 Nm
 WIRE STRIPPING LENGTH : 6 - 7.5 mm
 INSERTION FORCE PER POLE : MAX 3 N
 WITHDRAWAL FORCE PER POLE : MIN 1.5 N
- ELECTRICAL
 WIRE RANGE : 12-30 AWG
 VOLTAGE RATING : 300 V
 CURRENT RATING : 15 A
 CONTACT RESISTANCE : <15 m Ohm
 INSULATION RESISTANCE : >1000 M Ohm (500V DC)

4. OPERATING TEMPERATURE BETWEEN -40°C TO +105°C

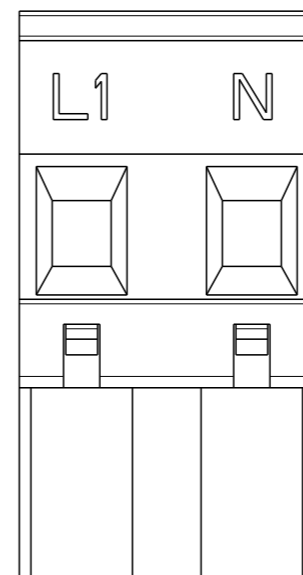
5 TOLERANCE NOT CUMULATIVE

6 PRELIMINARY - NOT RELEASED FOR PRODUCTION

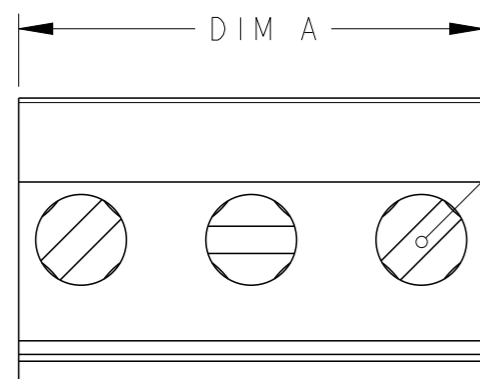
DIM. A	NO OF POS.	PART NUMBER
13.0	2	2-284042-2
88.0	12	1-284042-2
80.5	11	1-284042-1
73.0	10	1-284042-0
65.5	9	284042-9
58.0	8	284042-8
50.5	7	284042-7
43.0	6	284042-6
35.5	5	284042-5
28.0	4	284042-4
20.5	3	284042-3
13.0	2	284042-2



284042-3 AS SHOWN

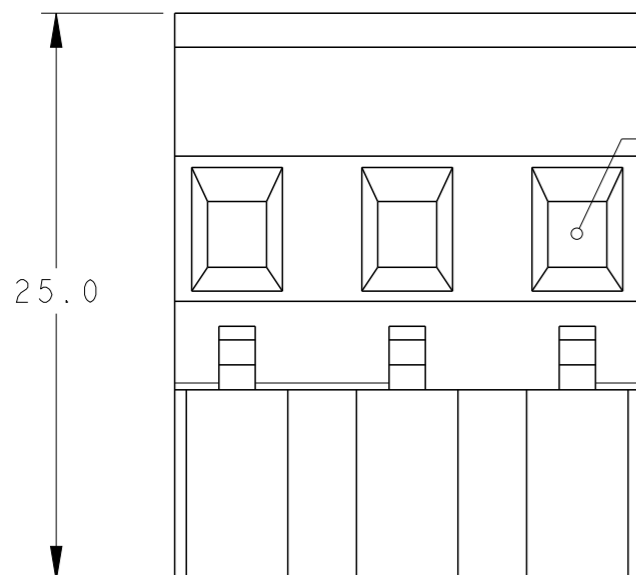


2-284042-2 AS SHOWN



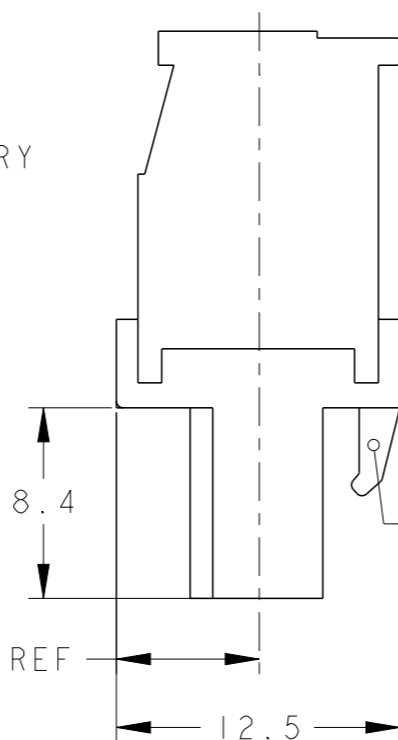
DIM A

CLAMPING SCREW



WIRE ENTRY

25.0



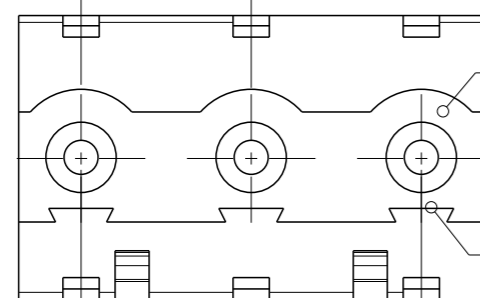
RETENTION LATCH

8.4

6.25 REF

12.5

5 7.50±0.08



MATING FACE

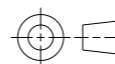
POLARIZED KEY SLOT

2.75 REF

2.75 REF

THIS DRAWING IS A CONTROLLED DOCUMENT.

DIMENSIONS: mm



TOLERANCES UNLESS OTHERWISE SPECIFIED:	
0 PLC	±0.2
1 PLC	±0.15
2 PLC	±0.15
3 PLC	±0.15
4 PLC	±0.15
ANGLES	±2°

MATERIAL SEE NOTES

FINISH SEE NOTES

DWN 03JAN2002

E. ZANOLINI

CHK 03JAN2002

E. ZANOLINI

APVD 03JAN2002

D. BIEVENOUR

PRODUCT SPEC

APPLICATION SPEC

WEIGHT

CUSTOMER DRAWING

NAME
TERMINAL BLOCK VERTICAL PLUG
STACKING, LEFT HAND
7.5mm PITCH

SIZE	CAGE CODE	DRAWING NO	RESTRICTED TO
A300779	C=284042		



SCALE 3:1 SHEET 1 OF 1 REV B2