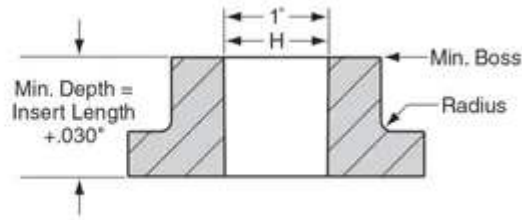
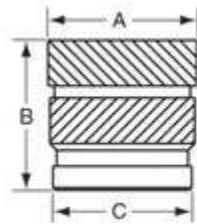


1032X250C



| | |
|-------------------|----------|
| A | 0.28 in |
| B | 0.25 in |
| Boss Size | 0.504 in |
| Brand | RAF |
| C | 0.249 in |
| Finish | None |
| Hole Size | 0.252 in |
| Material | Brass |
| Measurement Units | Standard |
| Series | C |
| Thread Size | 10-32 |

PRODUCT OPTIONS

| |
|---|
| Finish |
| None |
| Black Oxide (25) |
| Bright Dip (13) |
| Bright Tin over Copper Flash (14) |
| Cad Plate - Clear Chromate (2) |
| Cad Plate - Clear Chromate - Commercial (1) |



| |
|-------------------------------------|
| Cad Plate - Yellow Chromate (3) |
| Chrome - Bright (10) |
| Chrome - Satin (11) |
| Chrome over Nickel (4) |
| Electro Tin (16) |
| Electro Tin - Nickel Undercoat (44) |
| Electro Tin - Solder 60/40 (27) |
| Hot Tin Dip (15) |
| Nickel (5) |
| Nickel - Ductile (37) |
| Zinc - Black (42) |
| Zinc - Blue (43) |
| Zinc - Clear Chromate (12) |
| Zinc - Yellow Chromate (28) |

