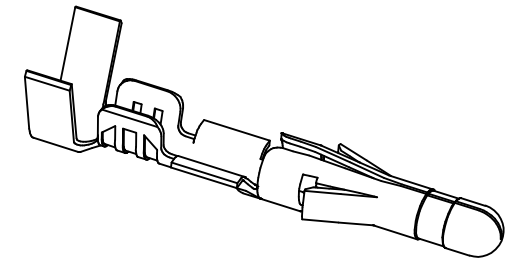
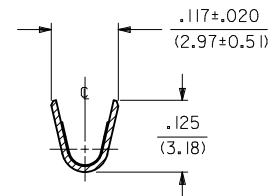
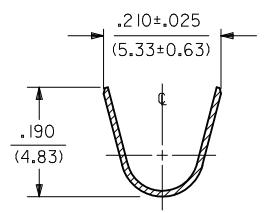
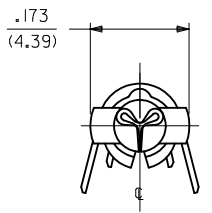


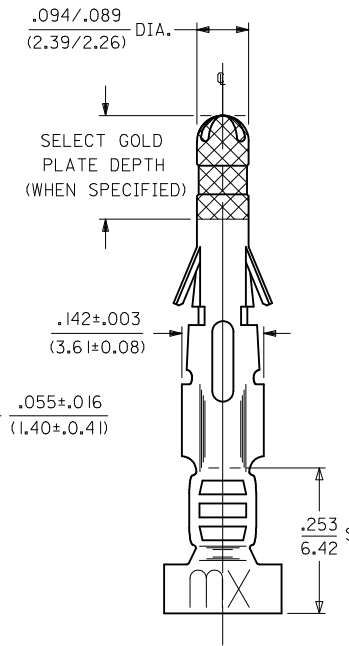
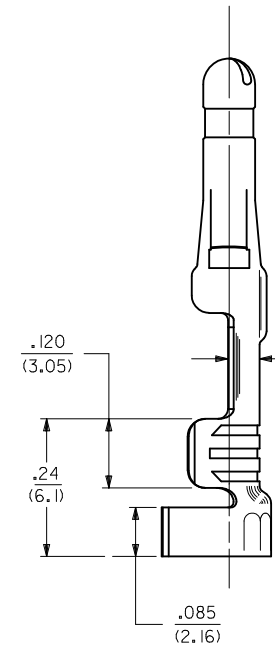
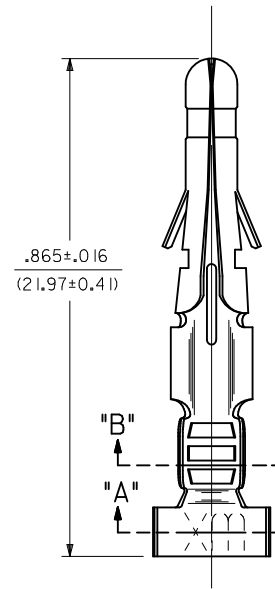
PART NO.	ENG. NO.	INTERLEAF PAPER OPTION
02-09-2103	1190-(P901)L	
02-09-2101	1190-(P901)	
02-09-6110	1190-(591)L	
02-09-6101	1190-(591)	
02-09-6106	1190-(550)L	
02-09-6100	1190-(550)	
02-09-5101	1190-(P901)-I	YES



SECT. "B-B"



SECT. "A-A"



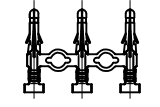
SELECT GOLD PLATE DEPTH (WHEN SPECIFIED)

SEE NOTE

- NOTES:
- MATERIAL:
CARTRIDGE BRASS
 - FINISH CODES:
901 HOT TIN DIP .000020/(0.00051) MIN.
591 SELECT GOLD PLATE .000050/(0.00127) MIN. IN CONTACT AREA, OVER .000050/(0.00127) MIN. NICKEL OVERALL WITH .000010/(0.00025) MAX. GOLD FLASH OVERALL.
550 SELECT GOLD PLATE .000015/(0.00038) MIN. IN CONTACT AREA, OVER .000030/(0.00076) MIN. NICKEL OVERALL WITH .000010/(0.00025) MAX. GOLD FLASH OVERALL.
 - PRODUCT SPECIFICATION: PS-43660-9999
 - PACKAGING SPECIFICATION: PK-1190-001
 - INSERTION FORCE: 5.0 LBS. MAX. WHEN TERMINAL IS INSERTED INTO .093 SERIES HOUSING.
 - RETENTION: 20 LBS. MIN. FROM HOUSING.
 - DIMENSION FROM THE END OF THE TERMINAL TO THE END OF THE BRUSH ON THE WIRE CRIMPED INTO THE TERMINAL.
 - TERMINAL FOR USE WITH .093/(2.36) SERIES HOUSINGS AND WILL ACCEPT 14 THRU 20 AWG WIRE.

LEGEND

1190-(****)*--*
 P=PREPLATE FINISH CODE
 BLANK=POSTPLATE
 FORM BLANK=CHAIN L=LOOSE
 INTERLEAF PAPER OPTION
 BLANK: INTERLEAF PAPER ON FIRST FEW WRAPS ONLY.
 I: INTERLEAF PAPER THROUGH OUT REEL.



CHAIN FORM FULL SCALE

ADD P/N 02-09-5101 EC NO: UCP2012-2714 DRWN: AELHAG CHKD: JBELL APPR: FSMITH	2012/02/20 2012/02/22 2012/04/25	QUALITY SYMBOLS	GENERAL TOLERANCES (UNLESS SPECIFIED)	DIMENSION STYLE	SCALE	DESIGN UNITS	THIRD ANGLE PROJECTION															
		= 0 = 0	<table border="1"> <thead> <tr> <th></th> <th>mm</th> <th>INCH</th> </tr> </thead> <tbody> <tr> <td>4 PLACES</td> <td>± .010</td> <td>± .0004</td> </tr> <tr> <td>3 PLACES</td> <td>± .015</td> <td>± .0006</td> </tr> <tr> <td>2 PLACES</td> <td>± .025</td> <td>± .0010</td> </tr> <tr> <td>1 PLACE</td> <td>± 0.36</td> <td>± .014</td> </tr> </tbody> </table>		mm	INCH	4 PLACES	± .010	± .0004	3 PLACES	± .015	± .0006	2 PLACES	± .025	± .0010	1 PLACE	± 0.36	± .014	IN/MM	6:1	INCH	
			mm	INCH																		
		4 PLACES	± .010	± .0004																		
3 PLACES	± .015	± .0006																				
2 PLACES	± .025	± .0010																				
1 PLACE	± 0.36	± .014																				
DESCRIPTION	APPROVED BY	DATE	TITLE	CRIMP TERMINAL, MALE .093/(2.36) DIA. FOR 14 THRU 20 AWG. WIRE																		
REV	DATE	DATE	DATE	MOLEX INCORPORATED DOCUMENT NO. SD-1190-* SHEET NO. 1 OF 1																		

DRAFT WHERE APPLICABLE MUST REMAIN WITHIN DIMENSIONS

SEE CHART

THIS DRAWING CONTAINS INFORMATION THAT IS PROPRIETARY TO MOLEX INCORPORATED AND SHOULD NOT BE USED WITHOUT WRITTEN PERMISSION