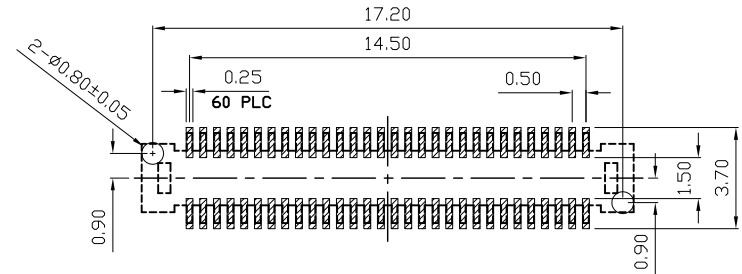
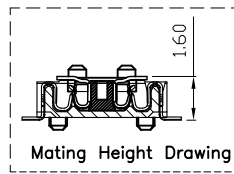
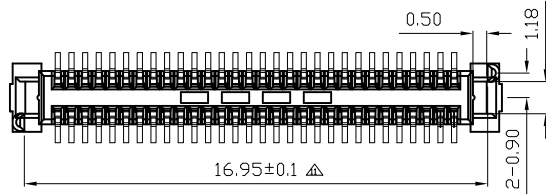
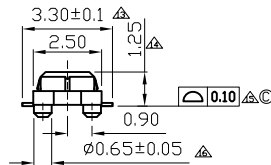
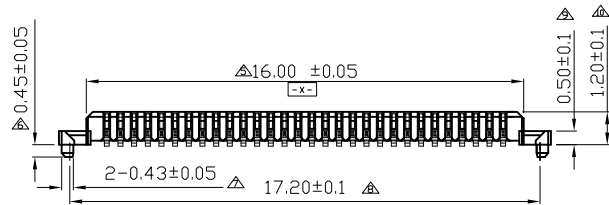
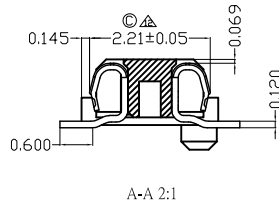
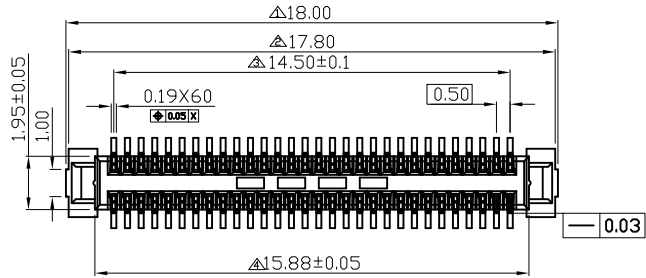


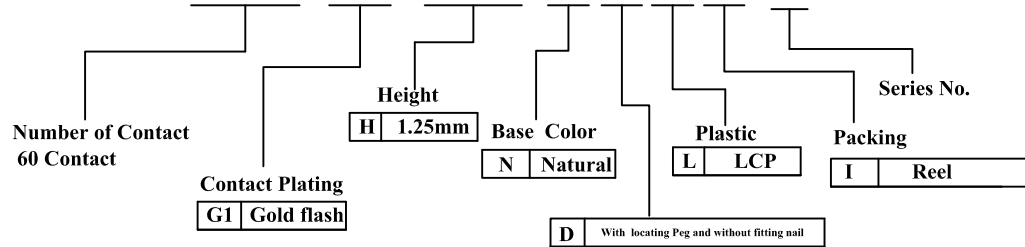
REV.	DESCRIPTION	DATE
A	New Drawing	2013/02/01

Compliance with:  
 PCIe4.0(GT/S),  
 USB3.2 Gen2(10Gbps),  
 USB3.2 Gen2 Type C(10Gbps).  
 Mating with:  
 "BAAF-060G1145NDLI-B"



▨ : STAND OFF AREA  
 TOLERANCE: ±0.05  
 RECOMMENDED PCB LAYOUT  
 (TOP VIEW)

**B B A F - 0 6 0 G 1 1 2 5 N D L I - B**



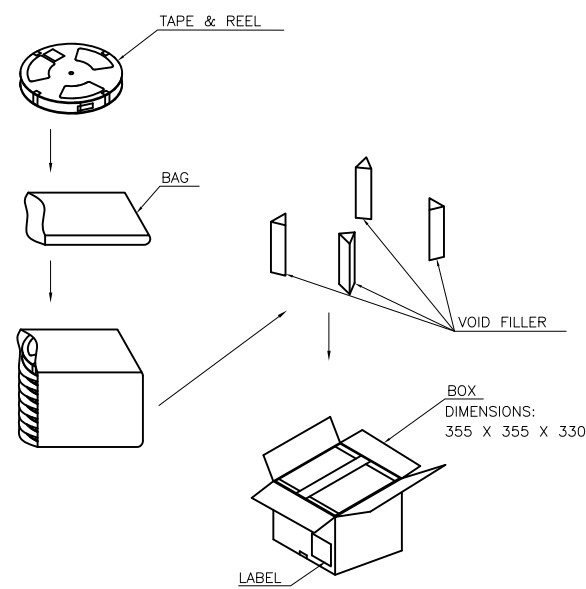
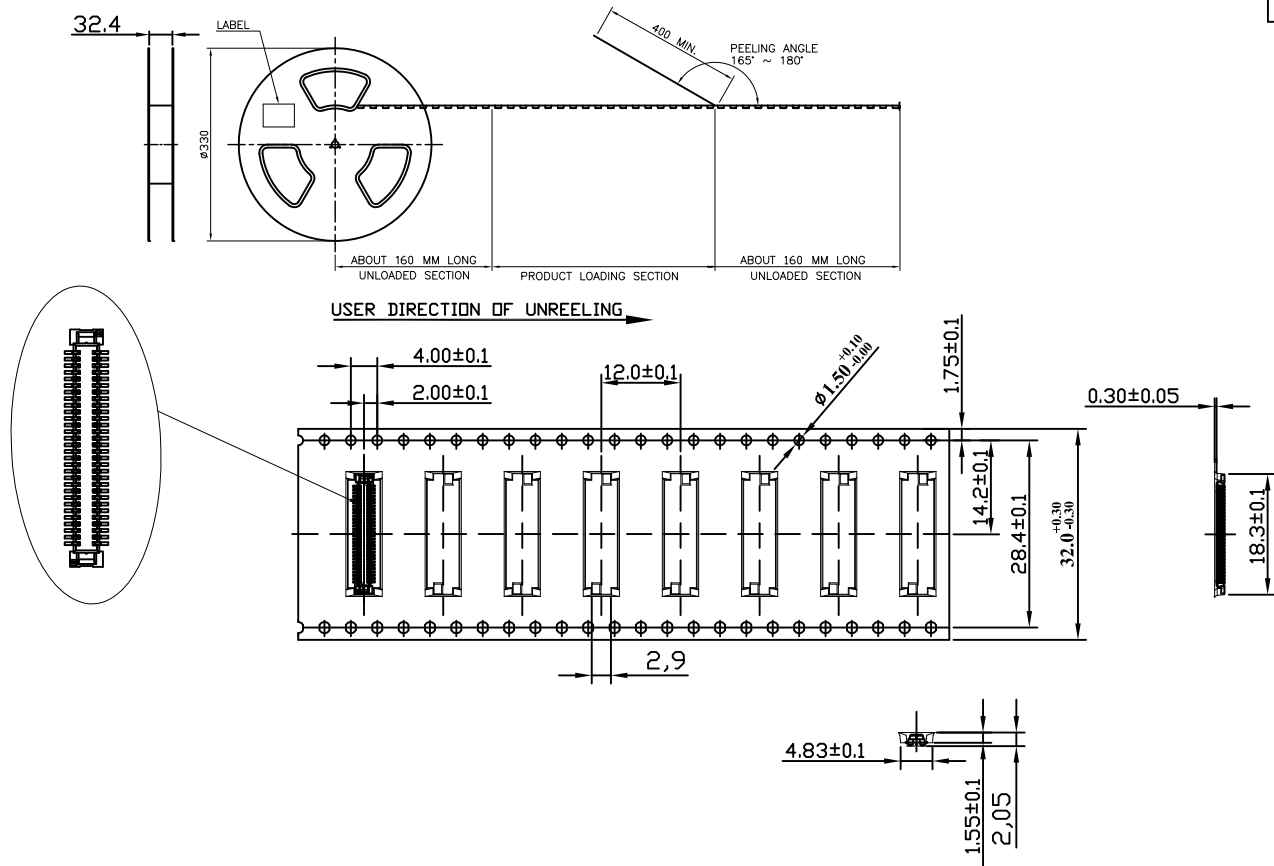
RoHS compliant

**Superior Tech Co., Ltd.**

REV.	UNIT	SCALE	General Tolerance	TITLE	PH0.5 BTOB H1.25 60PIN Male		
A	mm	1:1	X. ± 0.5	DRAWN	DATE	NO.	
			.X ± 0.3	Tom	02-01-13'	002	
			.XX ± 0.2	CHECK	DATE	PART NO.	
			.XXX ± 0.1	APPROVED	DATE	BBAF-060G1125NDLI-B	
			Angle ± 5°			CUSTOMER NO. DK	

(Q2-R03-01A) ST-R05-07

REV.	DESCRIPTION	DATE
A	New Drawing	2013/06/03



Note:  
 1.All dimensions meet EIA-481-C requirements.  
 2.Thickness : 0.3±0.05mm

PIN No.	PCS/R	R/CTN
60PIN	2500 PCS	8 R

RoHS compliant

<b>Superior Tech Co., Ltd.</b>			General Tolerance		TITLE <b>BBAF-060G1125NDLI-B -Packing</b>	
			X. ± 0.5		DRAWN	DATE
REV. <b>A</b>			UNIT <b>mm</b>		Tom	
			SCALE <b>1:1</b>		CHECK	DATE
			.XX ± 0.2		DATE	
			.XXX ± 0.1		APPROVED	DATE
			Angle ± 5°		DK	
					(Q2-R03-01A) ST-R05-07	