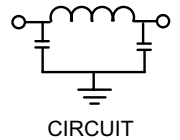
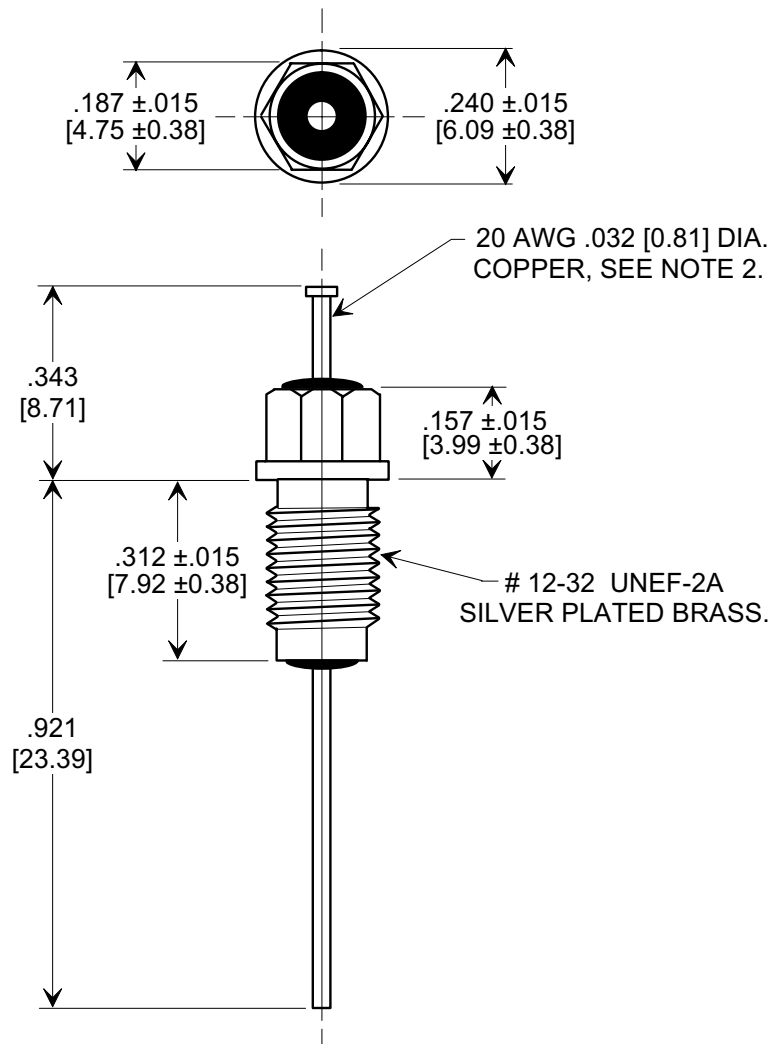
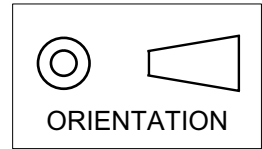


Electrical Testing
per Tusonix standard
test plans and Mil-Std-202
Test Methods.

MARKETING SALES DRAWING
DIMENSIONS IN INCHES - DO NOT SCALE THIS DRAWING
DIMENSIONS IN METRIC - []



NOTES:

- TUSONIX STANDARD PART NUMBER: 4203-051.
TUSONIX RoHS COMPLIANT PART NUMBER: 4203-051 LF.
CUSTOMER MUST SPECIFY STANDARD OR RoHS PART NUMBER WHEN ORDERING.
- LEAD FINISH: STANDARD PART #: 60/40 SOLDER PLATED COPPER. RoHS PART #: SILVER PLATED COPPER.
- PART MARKING: TRADEMARK AND VARIATION NUMBER ON HEX FLATS.
STANDARD PART: BLACK INK. RoHS PART: GREEN INK.
- SUPPLIED WITH SILVER PLATED COPPER ALLOY HEX NUT AND INTERNAL TOOTH LOCK WASHER.

MIN. CAP. (pF)	WORKING VOLTAGE (WVdc)		CURRENT IDC	I.R. MIN. @ 100 (VDC.)	DWV (VDC)	MINIMUM NO LOAD INSERTION LOSS (dB) AT 25°C PER MIL-STD -220			
	85°C	125 °C				10 MHz	100 MHz	1 GHz	10 GHz
5000	200	100	10 A	10 G Ω	400	20	65	70	70

X-2015 Rev-0

REVISION RECORD	Original Release C.O. 1653	2595 RDN TO COMP FMT & ADDED METRIC. S.M. 02-12-02 200020522-6-05 ADDED IR & DWV. ADDED AND REVISED NOTES. DIM .240 WAS .235. S.M. 11-15-05 20051027-3-03	TOLERANCES unless otherwise specified		Title BUSHING STYLE EMI FILTER	
	CURRENT UNIT "A" ADDED. L.E. 08-20-85		2 PLC. DECIMAL ± $\frac{\quad}{\quad}$	3 PLC. DECIMAL ± .031 [0.79]		
			ANGLES ± $\frac{\quad}{\quad}$	Drawn S.M. 05-22-02	Scale X 3	
			TUSONIX TUCSON, ARIZONA	Approved J.Mc. 05-22-02	A	4203-051