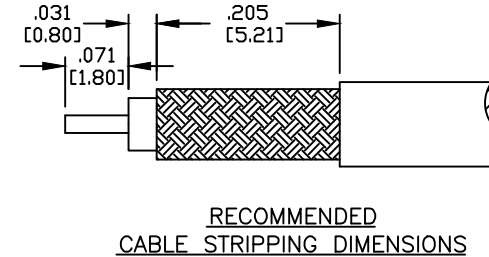
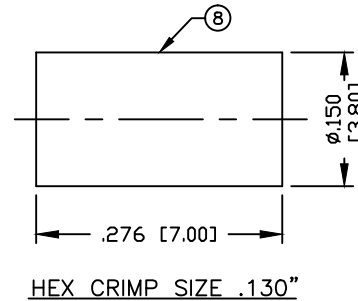
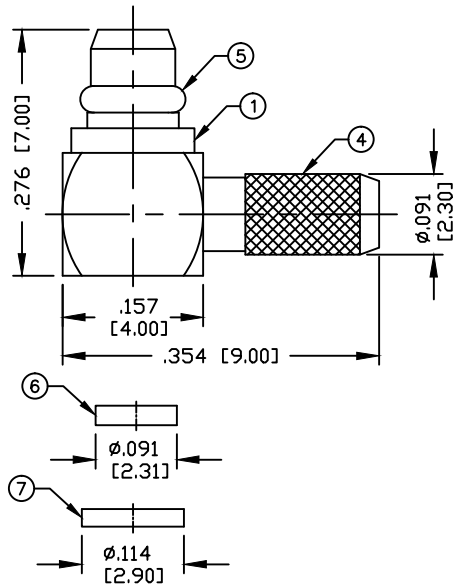


PART NO.

RMX-9010-1B

REV	DESCRIPTION	DWN	DATE	APPROVED
C	UPDATED CONNECTOR DESIGN & DWG FORMAT	CZS	06/27/19	JDMc

**SPECIFICATIONS:**

IMPEDANCE: 50 Ohms
 FREQUENCY RANGE: 0-6 GHz
 VSWR: 1.3 MAX
 INSERTION LOSS: 0.3 dB MAX @ 1GHz
 DIELECTRIC WITHSTANDING VOLTAGE: 500 VOLTS rms MAX
 INSULATION RESISTANCE: 1K M Ohms
 WORKING VOLTAGE: 170 Vrms AT SEA LEVEL
 ENGAGEMENT FORCE: 8 lbs. MAX.
 DISENGAGEMENT FORCE: 1.4 lbs. MIN.
 RG-174, 188, 188A, 316/U; ALPHA 9174, 9316;
 BELDEN 8216, 83269, 83284, 84-316; TIMES LMR-100A

#	DESCRIPTION	QTY	MATERIAL	FINISH
8	FERRULE	1	COPPER	GOLD
7	END CAP	1	BRASS	GOLD
6	INSULATOR DISK	1	PTFE	---
5	RETAINING RING	1	Be.Cu.	GOLD
4	FERRULE STUD	1	BRASS	GOLD
3	PIN	1	BRASS	GOLD
2	INSULATOR	1	PTFE	---
1	BODY	1	BRASS	GOLD

CUSTOMER OUTLINE DRAWING	
ALL DIMENSIONS ARE REFERENCE ONLY	
UNLESS OTHERWISE SPECIFIED: DIMENSIONS ARE IN INCHES AND [MILLIMETERS]	
DRAWN C. ZUNIGA	06/27/19
CHECKED	
ORJ DRAWN C. ZUNIGA	4/1/99

**RoHS
COMPLIANT**

PROPRIETARY AND CONFIDENTIAL
THIS DRAWING CONTAINS
INFORMATION PROPRIETARY TO
RF INDUSTRIES. ANY
UNAUTHORIZED USE OF THIS
DRAWING IS EXPRESSLY
PROHIBITED WITHOUT WRITTEN
PERMISSION FROM RF
INDUSTRIES. ANY VIOLATION IS
PUNISHABLE UNDER U.S.
COPYRIGHT LAWS.

RFconnectors
DIVISION OF RF INDUSTRIES, LTD. (858) 549-6345 FAX

RFINDUSTRIES.COM
7610 MIRAMAR RD.
SAN DIEGO, CA 92126
(858) 549-6340

MMCX CRIMP PLUG
RIGHT ANGLE

CABLE GROUP	DWG #	REVISION	
B	RMX-9010-1B	C	
FORMAT	SCALE	CONTROL #	SHEET 1 OF 1
A	NTS	000000	