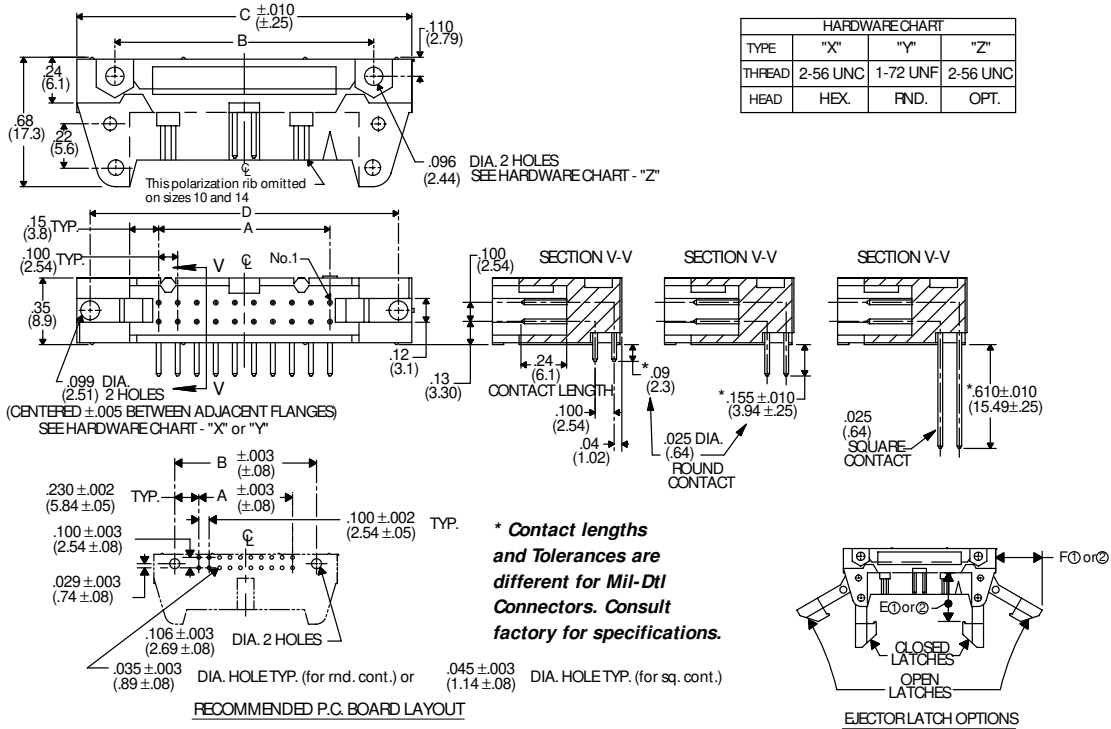


# Headers – Fully Shrouded

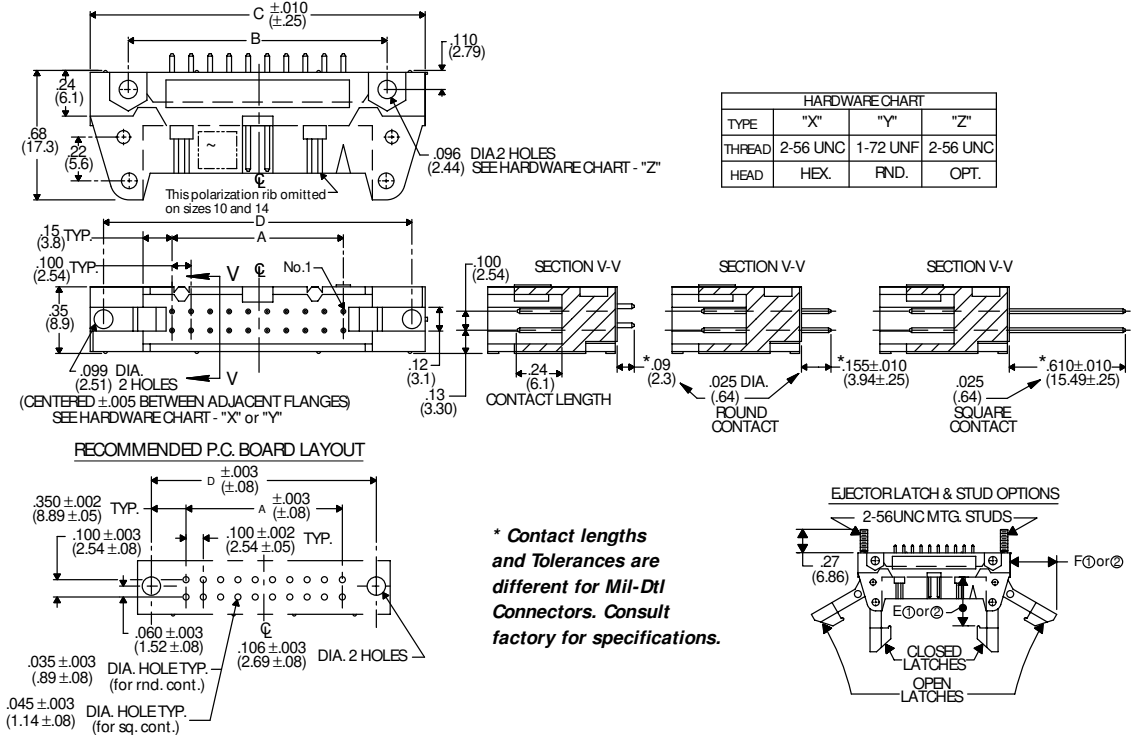
## Engineering Dimensions

### Dimensions

#### Right Angle Header



#### Straight Header



# Specifications and Ordering Information

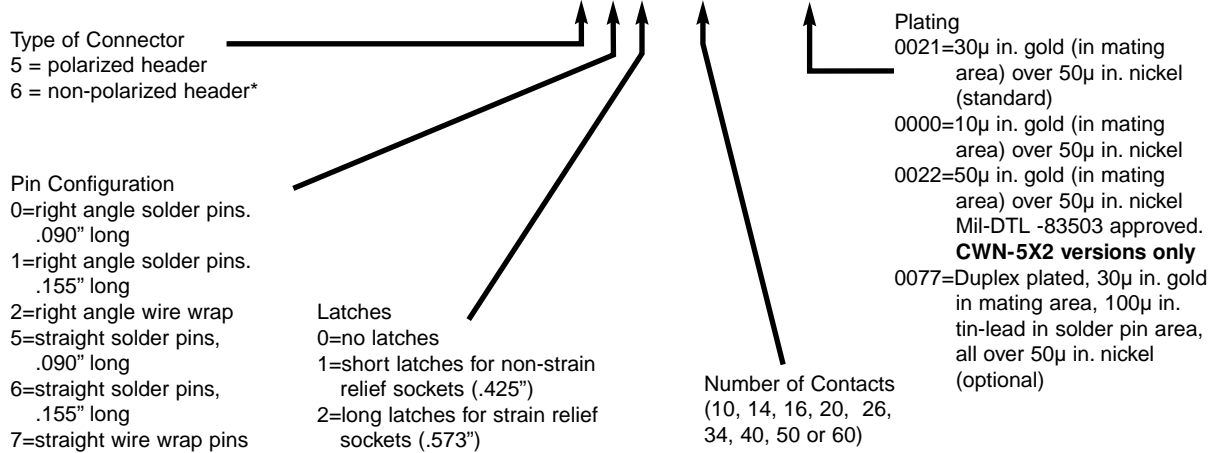
## Specifications



- Contacts: phosphor bronze standard
- Contact Plating: 30µ in. gold (in mating area) over 50µ in. nickel, standard; 10µ gold (in mating area) over 50µ in. nickel, optional; 50µ in. gold (in mating area) over 50µ in. nickel, optional
- Insulator Material: UL 94V-0 flame - retardant thermoplastic
- Color: blue
- Operating Temperature: -55°C to +125°C
- Current Rating: 1A (maximum) per contact
- Dielectric Withstand Voltage: greater than 500 Vdc at sea level
- Insulation Resistance: greater than 5 x 10<sup>9</sup> ohms
- U.S. Defense Department Mil-DTL-83503/24, and 25 approved

## How to Order Fully Shrouded Header Connectors

### CWN-XXX-XX-XXXX



HEADER DIMENSION CHART								
NO. CONTs	A	B	C	D	E <sub>1</sub>	E <sub>2</sub>	F <sub>1</sub>	F <sub>2</sub>
10	.400 (10.16)	.860 (21.84)	1.260 (32.00)	1.100 (27.94)	↑ .425 (10.80) ↓	↑ .573 (14.55) ↓	↑ .40 (10.2) ↓	↑ .51 (12.6) ↓
14	.600 (15.24)	1.060 (26.92)	1.460 (37.08)	1.300 (33.02)				
16	.700 (17.78)	1.160 (29.46)	1.560 (39.62)	1.400 (35.56)				
20	.900 (22.86)	1.360 (34.54)	1.760 (44.70)	1.600 (40.64)				
26	1.200 (30.48)	1.660 (42.16)	2.060 (52.32)	1.900 (48.26)				
34	1.600 (40.64)	2.060 (52.32)	2.460 (62.48)	2.300 (58.42)				
40	1.900 (48.26)	2.360 (59.94)	2.760 (70.10)	2.600 (66.04)				
50	2.400 (60.96)	2.860 (72.64)	3.260 (82.80)	3.100 (78.74)				
60	2.900 (73.66)	3.360 (85.34)	3.760 (95.50)	3.600 (91.44)				

E<sub>1</sub> and F<sub>1</sub> pertains to all headers with short latches  
 E<sub>2</sub> and F<sub>2</sub> pertains to all headers with long latches  
 \*Polarizing ribs removed