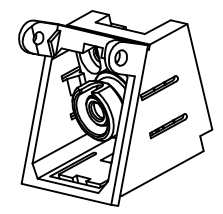
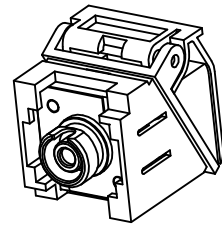
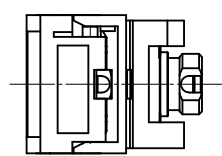
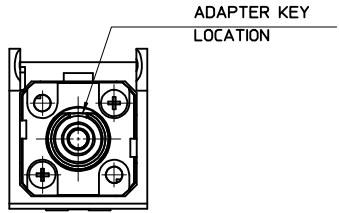


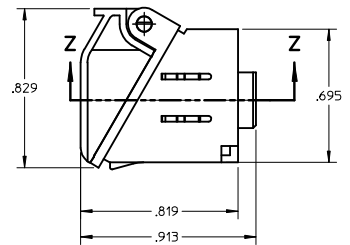
4	3	2	1
KIT P/N	FC ADAPTER	SLEEVE MAT.	CIENA P/N
106004-3263	106156-0200	PHOSPHOR BRONZE	252-1101-102
106004-3267	106152-0200	ZIRCONIA	252-1100-101



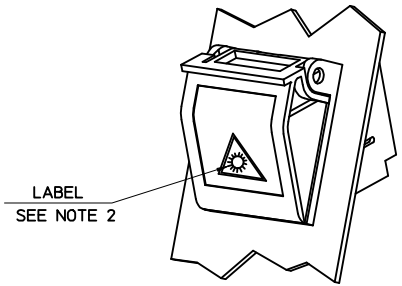
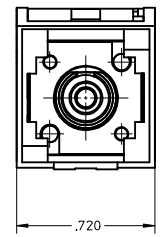
DOOR REMOVED



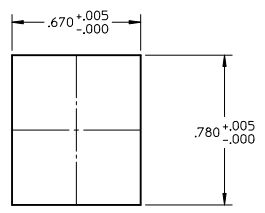
DOOR REMOVED



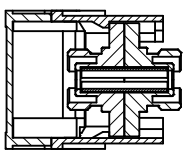
SECTION Z-Z



LABEL
SEE NOTE 2



RECOMMENDED
MOUNTING HOLE
IN THE PANEL PLATE



NOTES:

- 1.ALL DIMENSIONS ARE FOR REFERENCE ONLY.
- 2.LABEL TO BE INSTALLED BY CUSTOMER.

ENTER DESCRIPTION	QUALITY SYMBOLS
EC NO: MF2007-0509	▽=0
DRW:KPEVZNER	▽=0
CHKD: 2007/02/15	
APPR: IGJMIN	
REV: A4	

GENERAL TOLERANCES (UNLESS SPECIFIED)
4 PLACES ± --- INCH
3 PLACES ± --- INCH
2 PLACES ± --- INCH
1 PLACE ± --- INCH
ANGULAR ±1/2°
DRAFT WHERE APPLICABLE MUST REMAIN WITHIN DIMENSIONS

DIMENSION STYLE INCH ONLY	
DRAWN BY	DATE
CHECKED BY	DATE
APPROVED BY	DATE
MATERIAL NO.	SEE TABLE

SCALE 2:1	DESIGN UNITS INCH	THIRD ANGLE PROJECTION
TITLE FC/FC SMPX BEZEL ADPT W/PUSH TAB,BLK		
MOLEX INCORPORATED		SHEET NO. 1 OF 1
DOCUMENT NO. SD-106004-3267		
THIS DRAWING CONTAINS INFORMATION THAT IS PROPRIETARY TO MOLEX INCORPORATED AND SHOULD NOT BE USED WITHOUT WRITTEN PERMISSION		