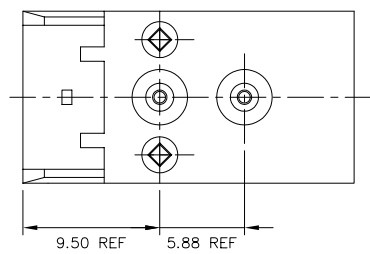
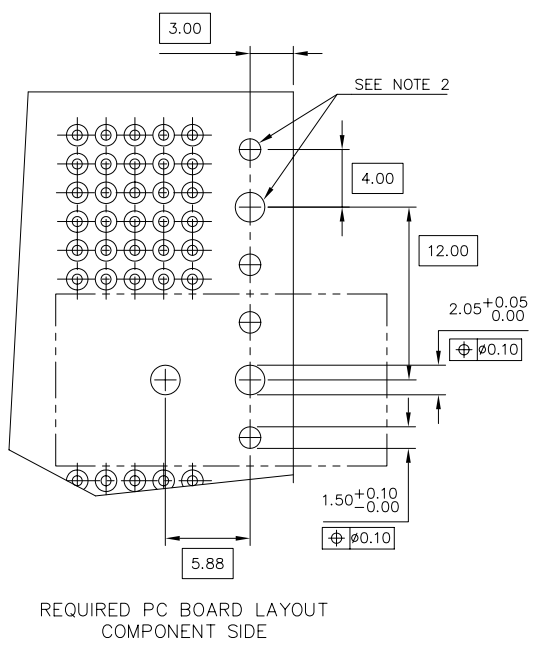
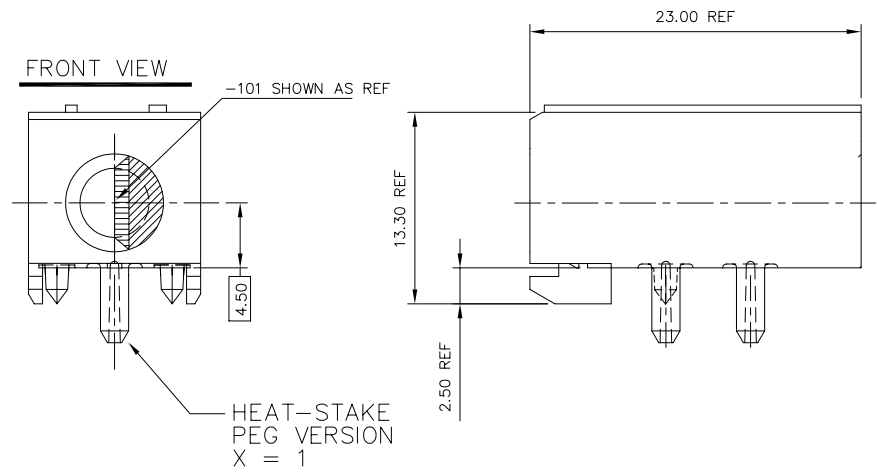


| | |
|-------------|--------------------|
| PRODUCT NO. | DESCRIPTION |
| 63739-X0Z | HEAT STAKE VERSION |

NOTE 5



NOTES:

- ① HOUSING MATERIAL: LCP, 30% GLASS FILLED FLAME RETARDANT PER UL 94V-0. COLOR: NATURAL
- ② INDICATED HOLES ARE UNPLATED.
3. SEE SHEET 2 FOR PRESS-PEG VERSION. SEE SHEET 3 FOR SCREW-DOWN VERSION.
4. TO BE USED WITH P/N 63738.
- ⑤ ADD "LF" SUFFIX AT THE END OF PART NUMBER FOR LEAD FREE OPTION.
6. THIS PRODUCT MEETS EUROPEAN UNION DIRECTIVES AND OTHER COUNTRY REGULATION AS DESCRIBED IN GS-22-008.
7. THE HOUSING WILL WITHSTAND EXPOSURE TO 260°C PEAK TEMPERATURE FOR 15 SECONDS IN A WAVE SOLDER APPLICATION WITH A 1.5mm MINIMUM THICK CIRCUIT BOARD OR FOR 10-20 SECONDS IN A CONVECTION, INFRA-RED OR VAPOR PHASE REFLOW OVEN. SEE APPLICATION NOTES/PROCEDURES IF THEY ARE AVAILABLE.

| | | | | | | | | | |
|-------------|----------|----------------|---------|---------------------|--------|---------------------------------------|--|---------------------------------|--|
| mat'l. code | | surface | | tolerance | | projection | | product family | |
| - | | ISO 1302 ✓ | | ISO 406 ISO 1101 | | | | METRAL (tm) | |
| ltr | | ecn no | | date | | tolerances unless otherwise specified | | title | |
| A | v90109 | MDF | 1/26/99 | angles | linear | .0±.3 .00±.13 .000±.0051 | | RECEPTACLE KEY MODULE, 5 ROW | |
| B | v01599 | JWS | 7/13/00 | | | scale 1:1 | | dwg no | |
| C | M06-0055 | MHT | 2/01/06 | | | | | 63739 | |
| D | M06-0277 | MHT | 7/22/06 | dr | | M.FETROW 1/26/99 | | sheet 1 of 4 size | |
| | | | | enrg | | C.PENDLETON 1/26/99 | | A3 | |
| | | | | chr | | C.PENDLETON 1/26/99 | | | |
| | | | | appd | | C.PENDLETON 1/26/99 | | type Product Customer Drawing | |
| sheet index | | revision sheet | | D | | | | | |
| | | 1 | | | | | | | |

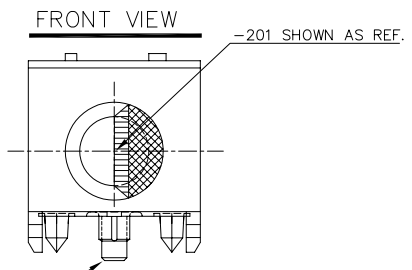


FCIconnect.com

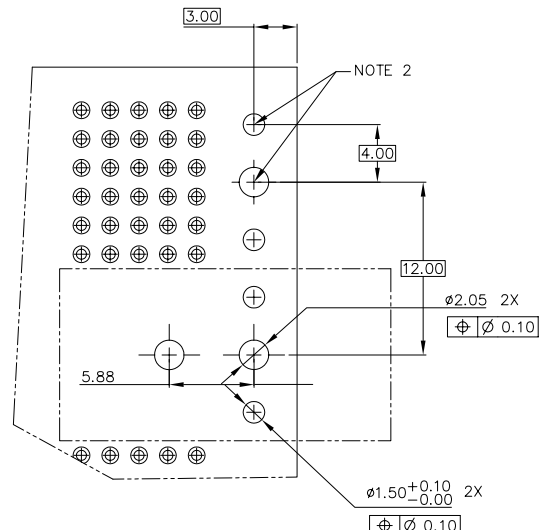
Copyright FCI

| | |
|-------------|-------------------|
| PRODUCT NO. | DESCRIPTION |
| 63739-X0Z | PRESS-PEG VERSION |

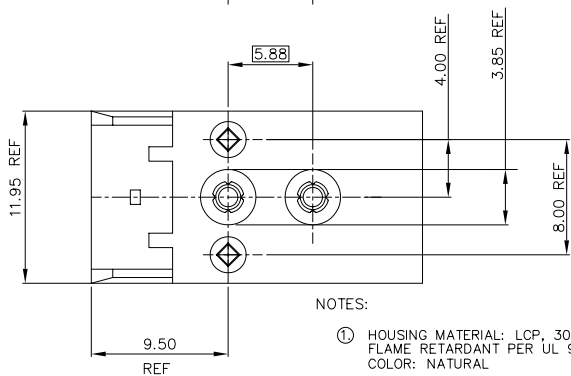
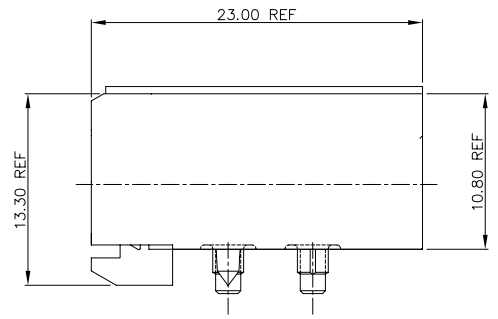
NOTE 5



PRESS PEG VERSION
X = 2



7. THE HOUSING WILL WITHSTAND EXPOSURE TO 260°C PEAK TEMPERATURE FOR 15 SECONDS IN A WAVE SOLDER APPLICATION WITH A 1.5mm MINIMUM THICK CIRCUIT BOARD OR FOR 10-20 SECONDS IN A CONVECTION, INFRA-RED OR VAPOR PHASE REFLOW OVEN. SEE APPLICATION NOTES/PROCEDURES IF THEY ARE AVAILABLE.



NOTES:

- ① HOUSING MATERIAL: LCP, 30% GLASS FILLED FLAME RETARDANT PER UL 94V-0. COLOR: NATURAL
- ② INDICATED HOLES ARE UNPLATED.
3. THIS SHEET SHOWS DIMENSIONS OF OPTIONAL PRESS-PEG ONLY. FOR ALL OTHER DIMENSIONS AND REQUIREMENTS SEE SHEET 1. FOR HEAT-STAKE VERSION SEE SHEET 1, FOR SCREW-DOWN VERSION, SEE SHEET 3.
4. TO BE USED WITH P/N 63738.
- ⑤ ADD "Lf" SUFFIX AT THE END OF PART NUMBER FOR LEAD FREE OPTION.
6. THIS PRODUCT MEETS EUROPEAN UNION DIRECTIVES AND OTHER COUNTRY REGULATION AS DESCRIBED IN GS-22-008.

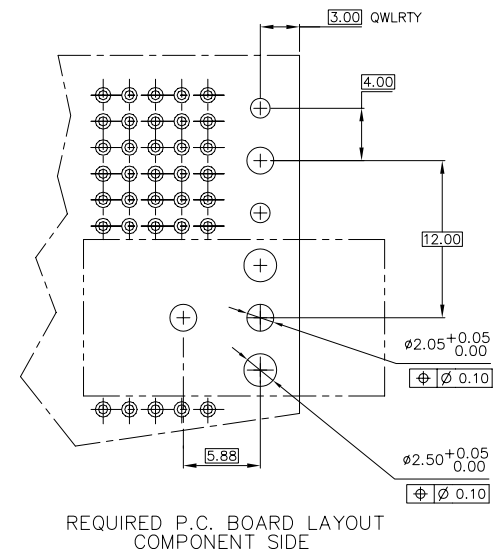
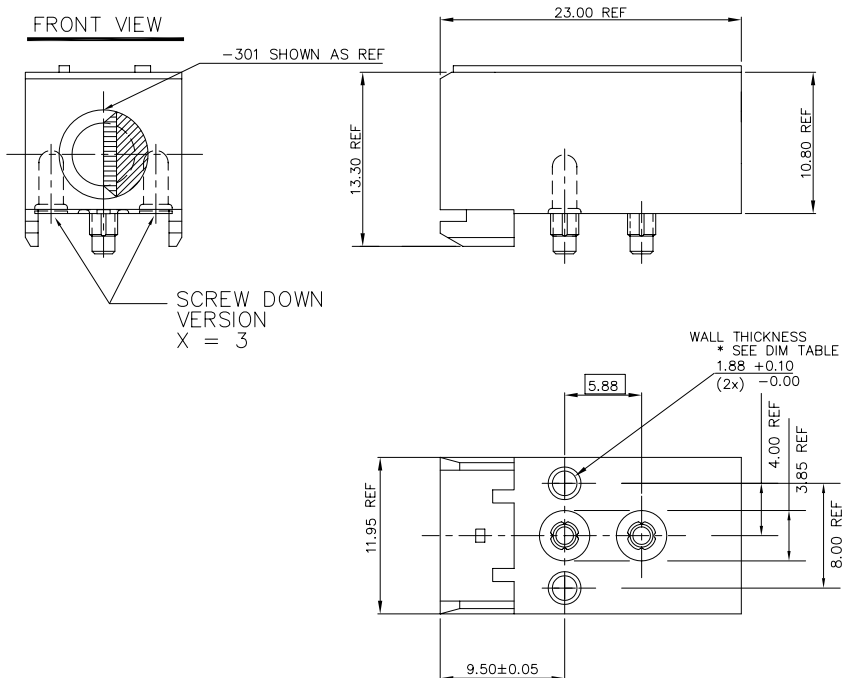
| | | | | | | | | | |
|-------------|--|----------------|--|-----------|--|---------------------------------------|--|-------------------------------|--|
| mat'l. code | | surface | | tolerance | | projection | | product family | |
| - | | ISO 1302 ✓ | | ISO 406 | | ISO 1101 | | METRAL (tm) | |
| ltr | | ecn no | | date | | tolerances unless otherwise specified | | title | |
| D | | | | | | .0±.3 | | RECEPTACLE KEY | |
| | | | | | | .00±.13 | | MODULE, 5 ROW | |
| | | | | | | .000±.0051 | | scale 1:1 | |
| | | | | | | MM | | dwg no | |
| | | | | | | scale 1:1 | | sheet 2 of 4 size | |
| | | | | | | FCJ | | 63739 | |
| | | | | | | | | A3 | |
| | | | | | | | | type Product Customer Drawing | |
| sheet index | | revision sheet | | | | | | | |

FCJ
FCJconnect.com

Copyright FCJ

| | |
|-------------|--------------------|
| PRODUCT NO. | DESCRIPTION |
| 63739-X0Z | SCREW DOWN VERSION |

NOTE 6



NOTES:

- ① HOUSING MATERIAL: LCP, 30% GLASS FILLED FLAME RETARDANT PER UL 94V-0. COLOR: NATURAL
2. THIS SHEET SHOWS DIMENSIONS OF OPTIONAL SCREW-DOWN ONLY. FOR ALL OTHER DIMENSIONS AND REQUIREMENTS SEE SHEET 1. FOR HEAT-STAKE VERSION SEE SHEET 1, FOR PRESS-PEG, SEE SHEET 2.
3. DIMENSIONS MARKED WITH AN * MAY DEVIATE AS SPECIFIED IN TABLE. ADVISE BERG ELECTRONICS WHEN DIMENSION IS BROUGHT INTO SPECIFIED TOLERANCE BY REPAIR OR REPLACEMENT.
4. MOUNTING SCREW TO BE #2-56 THREAD FORMING.
5. TO BE USED WITH P/N 63738.

- ⑥ ADD "LF" SUFFIX AT THE END OF PART NUMBER FOR LEAD FREE OPTION.
7. THIS PRODUCT MEETS EUROPEAN UNION DIRECTIVES AND OTHER COUNTRY REGULATION AS DESCRIBED IN GS-22-008.
8. THE HOUSING WILL WITHSTAND EXPOSURE TO 260°C PEAK TEMPERATURE FOR 15 SECONDS IN A WAVE SOLDER APPLICATION WITH A 1.5mm MINIMUM THICK CIRCUIT BOARD OR FOR 10-20 SECONDS IN A CONVECTION, INFRA-RED OR VAPOR PHASE REFLOW OVEN. SEE APPLICATION NOTES/PROCEDURES IF THEY ARE AVAILABLE.

| | | | | | | | | | |
|-------------|--|----------------|--|---------------------|--|---------------------------------------|--|---------------------------------|--|
| mat'l. code | | surface | | tolerance | | projection | | product family | |
| - | | ISO 1302 ✓ | | ISO 406 ISO 1101 | | ⊕ | | METRAL (tm) | |
| ltr | | ecn no dr | | date | | tolerances unless otherwise specified | | title | |
| D | | | | | | .0±.3 .00±.13 .000±.0051 | | RECEPTACLE KEY MODULE, 5 ROW | |
| | | | | | | MM | | scale 1:1 | |
| | | | | | | | | dwg no | |
| | | | | | | | | 63739 | |
| | | | | | | | | sheet 3 of 4 size | |
| | | | | | | | | A3 | |
| | | | | | | | | type Product Customer Drawing | |
| sheet index | | revision sheet | | | | | | | |



Copyright FCI

PRODUCT NO 63739-X0Z

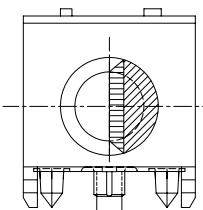
X = -1 (SHEET 1)

X = -2 (SHEET 2)

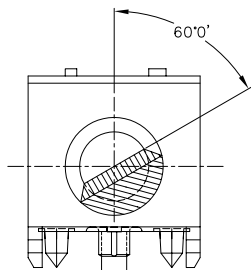
X = -3 (SHEET 3)

Z = 1 THRU 6 AS
SHOWN AT LEFT

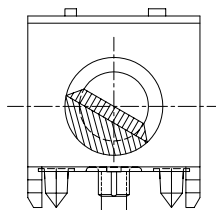
FRONT VIEW



-X01

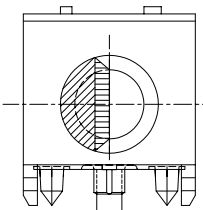


-X02

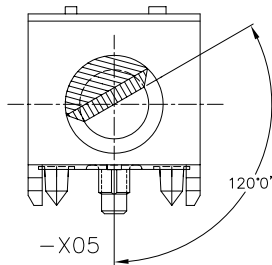


-X03

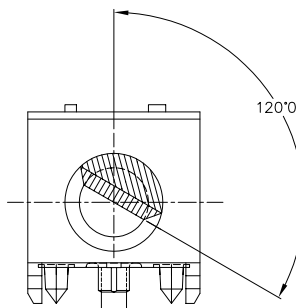
X = -2 SHOWN HERE



-X04



-X05



-X06



FCJconnect.com

Copyright FCJ

| | | | | | | | | | |
|-------------|--|----------------|--|-----------|--|---------------------------------------|--|---------------------------------|--|
| mat'l. code | | surface | | tolerance | | projection | | product family | |
| - | | ISO 1302 | | ISO 406 | | ISO 1101 | | METRAL (tm) | |
| ltr | | ecn no | | date | | tolerances unless otherwise specified | | title | |
| D | | | | | | .0±.3 | | RECEPTACLE KEY MODULE, 5 ROW | |
| | | | | angles | | linear | | | |
| | | | | 0°±2' | | .00±.13 | | | |
| | | | | | | .000±.0051 | | scale 1:1 | |
| | | | | dr | | M.FETROW 1/26/99 | | dwg no | |
| | | | | enr | | C.PENDLETON 1/26/99 | | sheet 4 of 4 size | |
| | | | | chr | | C.PENDLETON 1/26/99 | | 63739 A3 | |
| | | | | appd | | C.PENDLETON 1/26/99 | | type Product Customer Drawing | |
| sheet index | | revision sheet | | | | | | | |