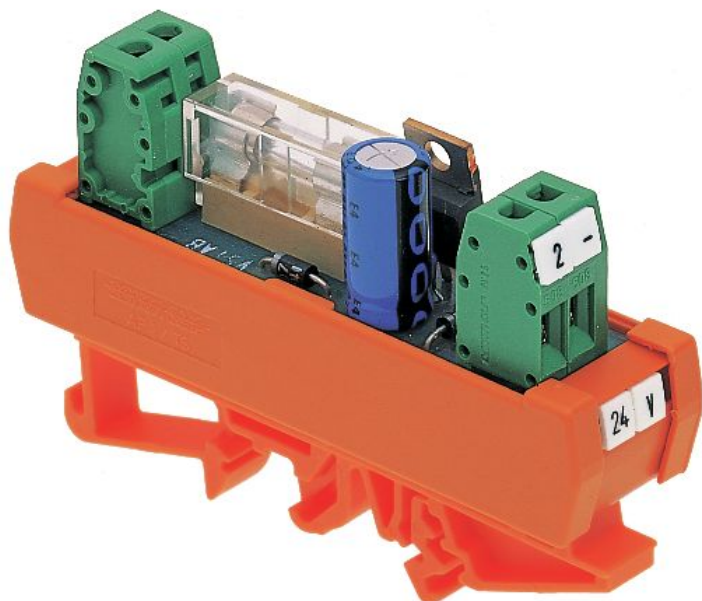


Data sheet

6140.2 VSTAB 10



DC/DC converter module, regulated, Screw connection, Mounting type: Mounting rail TS 35, Input: 1-phase, Output: 10 VDC/0.2 A

Business data

Article number	6140.2
Article name	VSTAB 10
GTIN (EAN)	4044211072278
Packaging unit	1
Quantity unit	PC
Weight per piece (not including packaging)	38.6 g
Weight per piece (including packaging)	46.4 g
Unit of weight	G
Customs number	85423990
Country of origin	NL
Product description	Converter module

Technical data

Dimensions

Length	24 mm
Width	87 mm
Height TS 35/7.5	57 mm

Ratings

Overvoltage category	III
Contamination degree	2

Connection data

Connection principle	Screw connection
Wire cross-section single core (rigid), min.	0.2 mm ²
Wire cross-section single-core (rigid), max.	4 mm ²
Wire cross-section stranded, min.	0.2 mm ²
Wire cross-section stranded, max.	2.5 mm ²
Wire cross-section stranded with wire-end ferrules, min.	0.2 mm ²
Wire cross-section stranded with wire-end ferrules, max.	2.5 mm ²
Stripping length	7 mm
Torque	0.6 Nm

Input data

Input voltage DC min.	13 V
Input voltage DC max.	35 V

Output data

Output voltage DC	10 V
Regulated DC voltage	✓
Output current	0.2 A
Residual ripple	<50 mV

Materials

Working temperature, min.	-20 °C
Working temperature, max.	50 °C

Technical data

Further technical data

Protection class	IP00
Trigger characteristic	Time-lag (T)
Short-circuit resistant	✓
Input fuse (internal)	0,25 A
Derating	See diagram %

Environmental Product Compliance

REACH Conform	yes
REACH Reference date	2023-01-17
REACH Candidate Substance Note	No
RoHS Conform	yes

Data sheet

6140.2 VSTAB 10



Approvals

Standards and regulations

CE compliant

yes

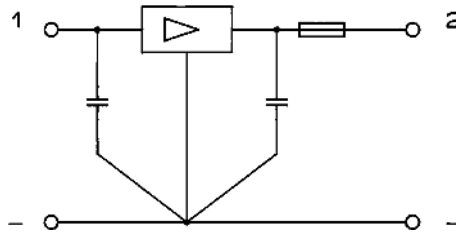
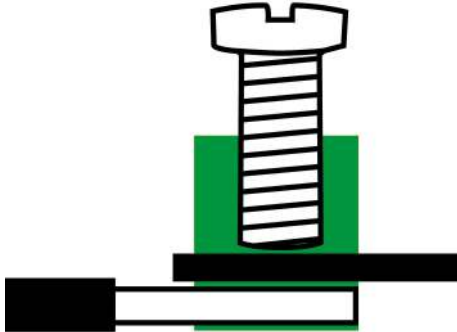
Standards / specifications

DIN EN 50178 / DIN VDE 0110

Data sheet

6140.2 VSTAB 10

Media



Accessories
