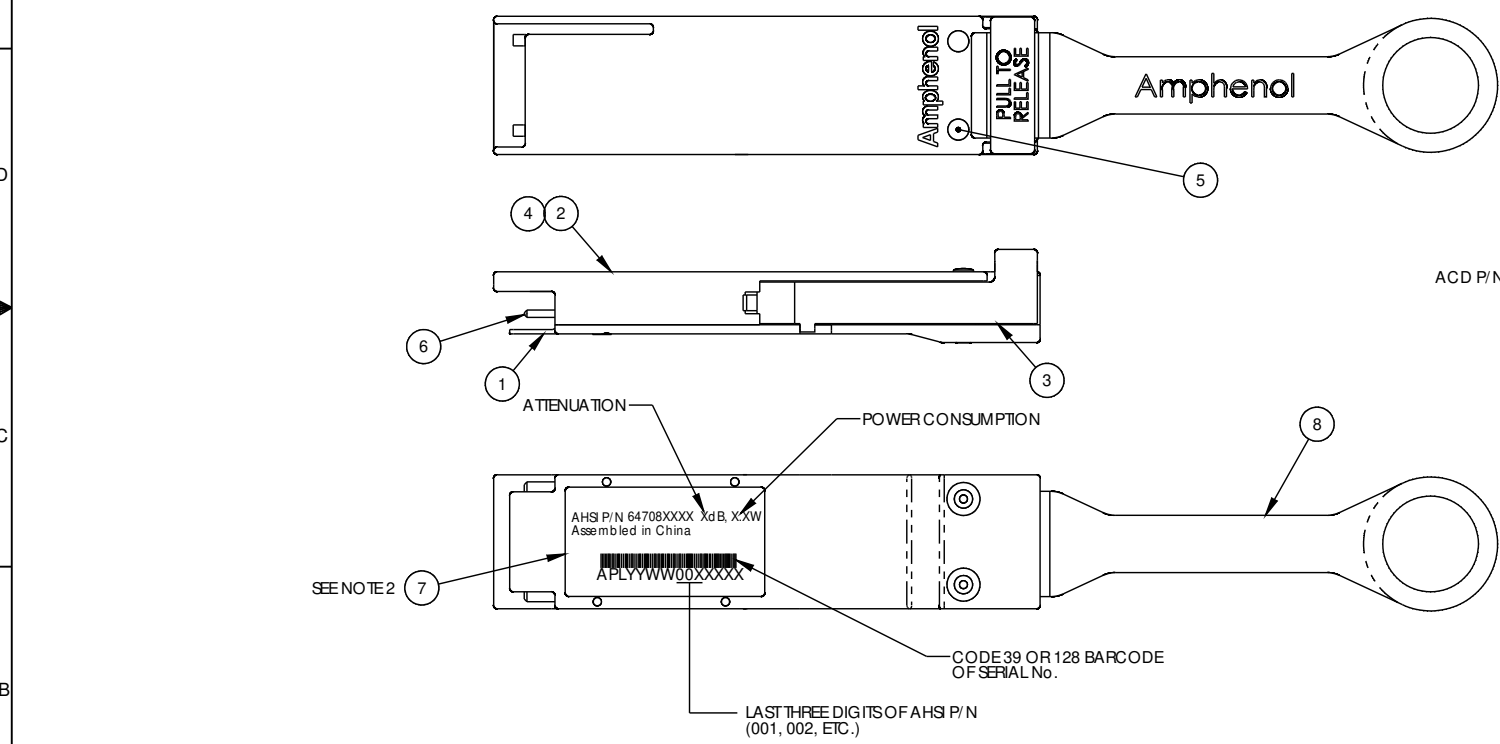


THE INFORMATION CONTAINED IN THIS DRAWING IS THE SOLE PROPERTY OF AMPHENOL INTERCONNECT PRODUCTS CORP. ANY REPRODUCTION OR DISCLOSURE TO THIRD PARTIES IN PART OR WHOLE WITHOUT THE EXPRESS WRITTEN PERMISSION OF AMPHENOL INTERCONNECT PRODUCTS CORP. IS PROHIBITED.

A/IPC P/N	DESCRIPTION	CUSTOMER P/N	POWER CONSUMPTION	ATTENUATION	EYE & JITTER TEST	EPROM REV
647080001	QSFP LOOPBACK W/MODSEL	SF-100GLB1.5W-0DB	1.5W	0 dB	NO	C
647080002	QSFP LOOPBACK W/MODSEL	SF-100GLB0W00-0DB	---	0 dB	NO	C
647080003	QSFP LOOPBACK W/MODSEL	SF-100GLB2.5W-0DB	2.5W	0 dB	NO	C
647080004	QSFP LOOPBACK W/MODSEL	SF-100GLB1.5W-3DB	1.5W	3 dB	YES	C
647080005	QSFP LOOPBACK W/MODSEL	SF-100GLB2.5W-3DB	2.5W	3 dB	YES	C
647080006	QSFP LOOPBACK W/MODSEL	SF-100GLB1.5W-5DB	1.5W	5 dB	YES	C
647080007	QSFP LOOPBACK W/MODSEL	SF-100GLB2.5W-5DB	2.5W	5 dB	YES	C
647080008	QSFP LOOPBACK W/MODSEL	SF-100GLB1.5W-6DB	1.5W	6 dB	YES	C
647080009	QSFP LOOPBACK W/MODSEL	SF-100GLB2.5W-6DB	2.5W	6 dB	YES	C
647080010	QSFP LOOPBACK W/MODSEL	SF-100GLB0W00-3DB	---	3 dB	YES	C
647080011	QSFP LOOPBACK W/MODSEL	SF-100GLB0W00-5DB	---	5 dB	YES	C
647080012	QSFP LOOPBACK W/MODSEL	SF-100GLB0W00-6DB	---	6 dB	YES	C
647080013	QSFP LOOPBACK W/MODSEL	SF-100GLB3.5W-0DB	3.5W	0 dB	NO	C
647080014	QSFP LOOPBACK W/MODSEL	SF-100GLB3.5W-3DB	3.5W	3 dB	YES	C
647080015	QSFP LOOPBACK W/MODSEL	SF-100GLB3.5W-5DB	3.5W	5 dB	YES	C
647080016	QSFP LOOPBACK W/MODSEL	SF-100GLB3.5W-6DB	3.5W	6 dB	YES	C

REV.	DESCRIPTION	DATE	APPROVED
A	NEW RELEASE PER EO 306707	11/15	DEC
B	REVISED PER ECN 306741	11/15	DEC
C	REVISED PER ECN 306765	12/15	DEC



ATTENUATION
POWER CONSUMPTION

ACD P/N

AMPHENOL CABLES ON DEMAND
SF-100GLBXXX-XXX
QSFP+ LOOPBACK, X dB, X.XW
WW/YY
WWW.CABLESONDEMAND.COM
866-223-2860

BAG LABEL DETAIL

- THIS DRAWING IS RESERVED FOR AMPHENOL ACD (NO CUSTOMER DRAWING).
- PERMANENTLY MARK LABEL WITH INDICATED TEXT.
- ALL MATERIALS USED IN THE MANUFACTURE OF THIS ASSEMBLY SHALL COMPLY WITH AMPHENOL REGULATED MATERIALS SPECIFICATION CS-1152.
- TEST COMPLETED ASSEMBLIES PER AMPHENOL CS-1089. TEST ASSEMBLIES AT 10.31 Gbps AS NOTED IN P/N TABLE.
- SIMILAR TO AMPHENOL SPEC 63051XXXX.
- PROGRAM EPROM PER CS-1154. EPROM SERIAL No. MUST MATCH LABEL SERIAL No.
- INSTALL DUST COVER (ITEM 9) OVER CONNECTOR. COMPLETED ASSY SHALL BE PACKAGED IN AN APPROPRIATELY SIZED ANTI-STATIC BAG. PERMANENTLY LABEL BAG PER BAG LABEL DETAIL.



SPECIFICATION CONTROL DRAWING

UNLESS OTHERWISE SPECIFIED DIMENSIONS ARE IN INCHES TOLERANCES ARE: DECIMALS ANGLES .X ±X .XX ±.01 .XXX ±.005	EARNO.	Amphenol Interconnect Products Corp. 20 Valley St. Endicott, NY, 13760
	APPROVALS DRAWN D. CASHMERE	
THIRD ANGLE PROJECTION	RESP ENG	ASSEMBLY, LOOPBACK, QSFP, W/MODSEL & POWER OPTIONS, 25Gbps
	MFG ENG	
CAD FILE: S:\Solid Works\PE 5 DIGIT NO\ 64708		SIZE DWG. NO. 64708XXXX
NOTES: UNLESS OTHERWISE SPECIFIED		REV. C