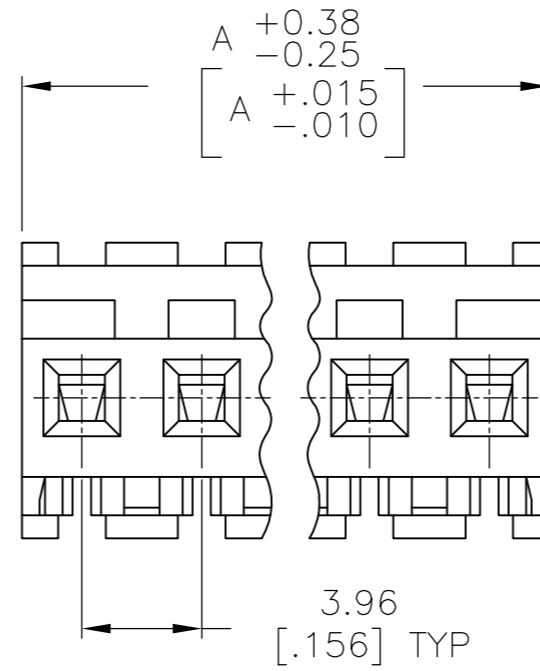
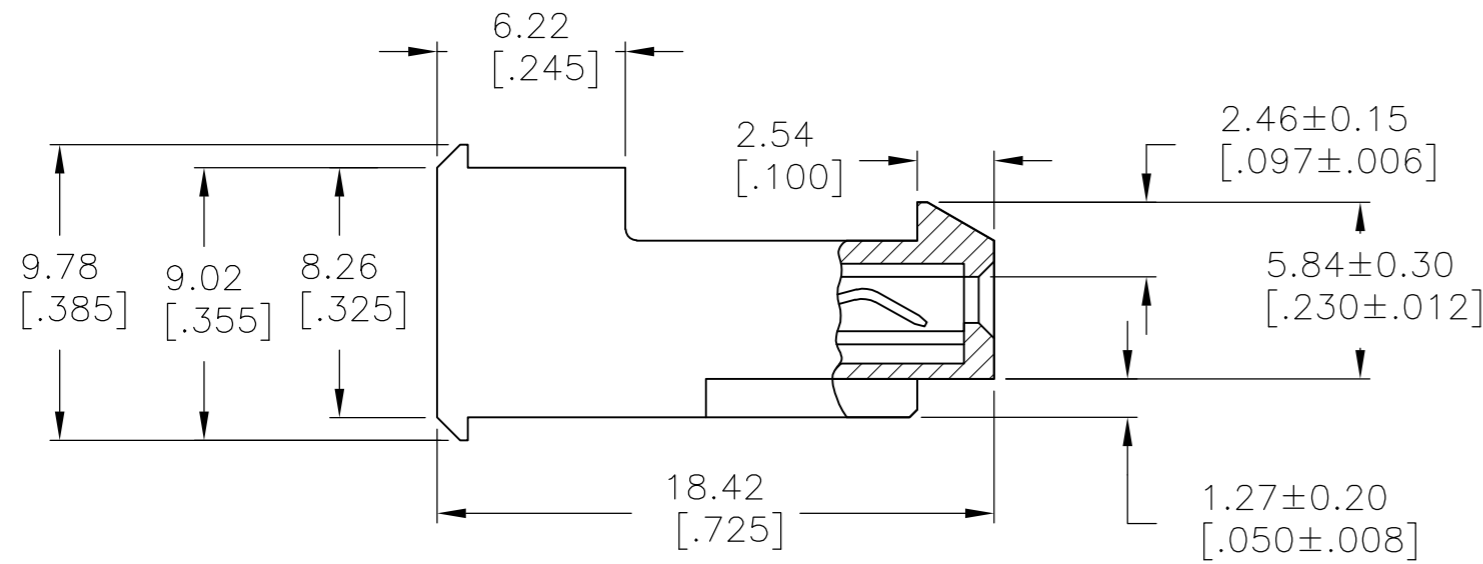
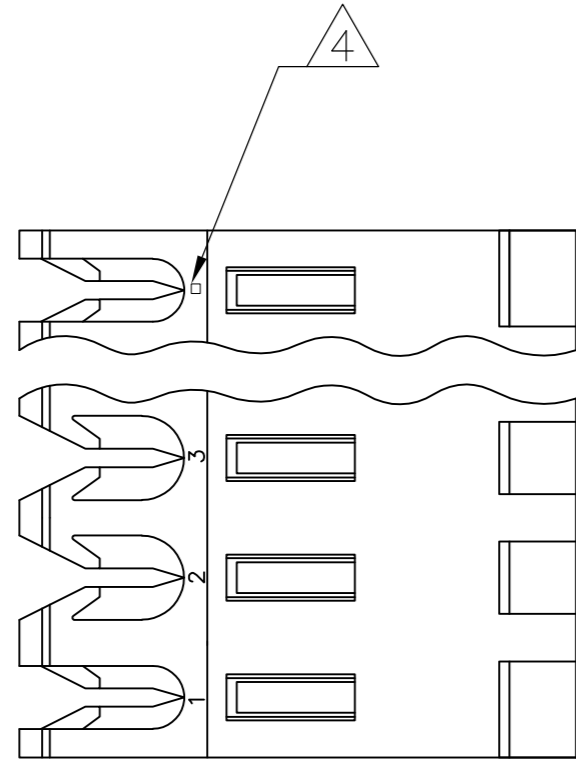


THIS DRAWING IS UNPUBLISHED. RELEASED FOR PUBLICATION
 © COPYRIGHT - By - TE CONNECTIVITY ALL RIGHTS RESERVED.

LOC	DIST	REVISIONS					
CM	00	P	LTR	DESCRIPTION	DATE	DWN	APVD
		N2		REVISED PER ECR-15-006687	26OCT2015	NK	NL



1 MATERIAL: CONNECTOR - NYLON UL94V-2 (YELLOW).
 CONTACTS - 0.00076[.000030] GOLD THK OR 0.00008[.000003] MIN THK
 GOLD FLASH OVER 0.00068[.000027] THK PALLADIUM NICKEL, PER TE
 CONNECTIVITY'S DISCRETION. IN CONTACT
 AREA WITH BRIGHT TIN-LEAD FOR 641228-2
 THRU 2-641228-4, MATTE WHISKER MITIGATED
 TIN FOR 3-641228-2 THRU 5-641228-4
 OVER NICKEL UNDERPLATE.

2 CONTACTS ACCEPT 20 AWG WIRE WITH 2.41[.095] MAX
 INSULATION DIAMETER.

3 CONTACTS MUST ACCEPT 1.14±0.03 [.045±.001] SQUARE
 POST AND REMAIN LOCKED IN POSITION.

4 IDENTIFICATION NUMBER FOR LAST CIRCUIT MAY
 NOT APPEAR ON ALL ASSEMBLIES.

5 DIMENSIONS IN BRACKETS ARE IN INCHES.

6 HOUSING FEATURES ARE: FEED-THRU WITH LOCKING
 RAMP.

7 OBSOLETE PARTS: OBSOLETE CIS STREAMLINING PER D.RENAUD/D.SINISI

95.10	[3.744]	24	5-641228-4
91.14	[3.588]	23	5-641228-3
87.17	[3.432]	22	5-641228-2
83.21	[3.276]	21	5-641228-1
79.25	[3.120]	20	5-641228-0
75.29	[2.964]	19	4-641228-9
71.32	[2.808]	18	4-641228-8
67.36	[2.652]	17	4-641228-7
63.40	[2.496]	16	4-641228-6
59.44	[2.340]	15	4-641228-5
55.47	[2.184]	14	4-641228-4
51.51	[2.028]	13	4-641228-3
47.55	[1.872]	12	4-641228-2
43.59	[1.716]	11	4-641228-1
39.62	[1.560]	10	4-641228-0
35.66	[1.404]	9	3-641228-9
31.70	[1.248]	8	3-641228-8
27.74	[1.092]	7	3-641228-7
23.77	[.936]	6	3-641228-6
19.81	[.780]	5	3-641228-5
15.85	[.624]	4	3-641228-4
11.89	[.468]	3	3-641228-3
7.92	[.312]	2	3-641228-2
95.10	[3.744]	24	2-641228-4
91.14	[3.588]	23	2-641228-3
87.17	[3.432]	22	2-641228-2
83.21	[3.276]	21	2-641228-1
79.25	[3.120]	20	2-641228-0
75.29	[2.964]	19	1-641228-9
71.32	[2.808]	18	1-641228-8
67.36	[2.652]	17	1-641228-7
63.40	[2.496]	16	1-641228-6
59.44	[2.340]	15	1-641228-5
55.47	[2.184]	14	1-641228-4
51.51	[2.028]	13	1-641228-3
47.55	[1.872]	12	1-641228-2
43.59	[1.716]	11	1-641228-1
39.62	[1.560]	10	1-641228-0
35.66	[1.404]	9	641228-9
31.70	[1.248]	8	641228-8
27.74	[1.092]	7	641228-7
23.77	[.936]	6	641228-6
19.81	[.780]	5	641228-5
15.85	[.624]	4	641228-4
11.89	[.468]	3	641228-3
7.92	[.312]	2	641228-2

7 SUPERCEDED

7 SUPERCEDED

DIM A NO OF CIRCUITS PART NO

THIS DRAWING IS A CONTROLLED DOCUMENT.		DWN B. LEWIS 12 MAR 96			
DIMENSIONS: mm [INCHES]		CHK R. SWING 12 MAR 96			
TOLERANCES UNLESS OTHERWISE SPECIFIED:		APVD D. CLARK 12 MAR 96	NAME		
0 PLC ± -		PRODUCT SPEC	MTA-156 CONNECTOR ASSEMBLY, 20 AWG, STANDARD		
1 PLC ± -		108-1051	SIZE	CAGE CODE	
2 PLC ± -		APPLICATION SPEC	114-1020	DRAWING NO	RESTRICTED TO
3 PLC ± 0.13 [.005]		FINISH	1	A2 00779	641228
4 PLC ± -		WEIGHT			
ANGLES ± 0° 30'		CUSTOMER DRAWING			
MATERIAL		SCALE	SHEET	REV	
1	1	4:1	1 OF 1	N2	