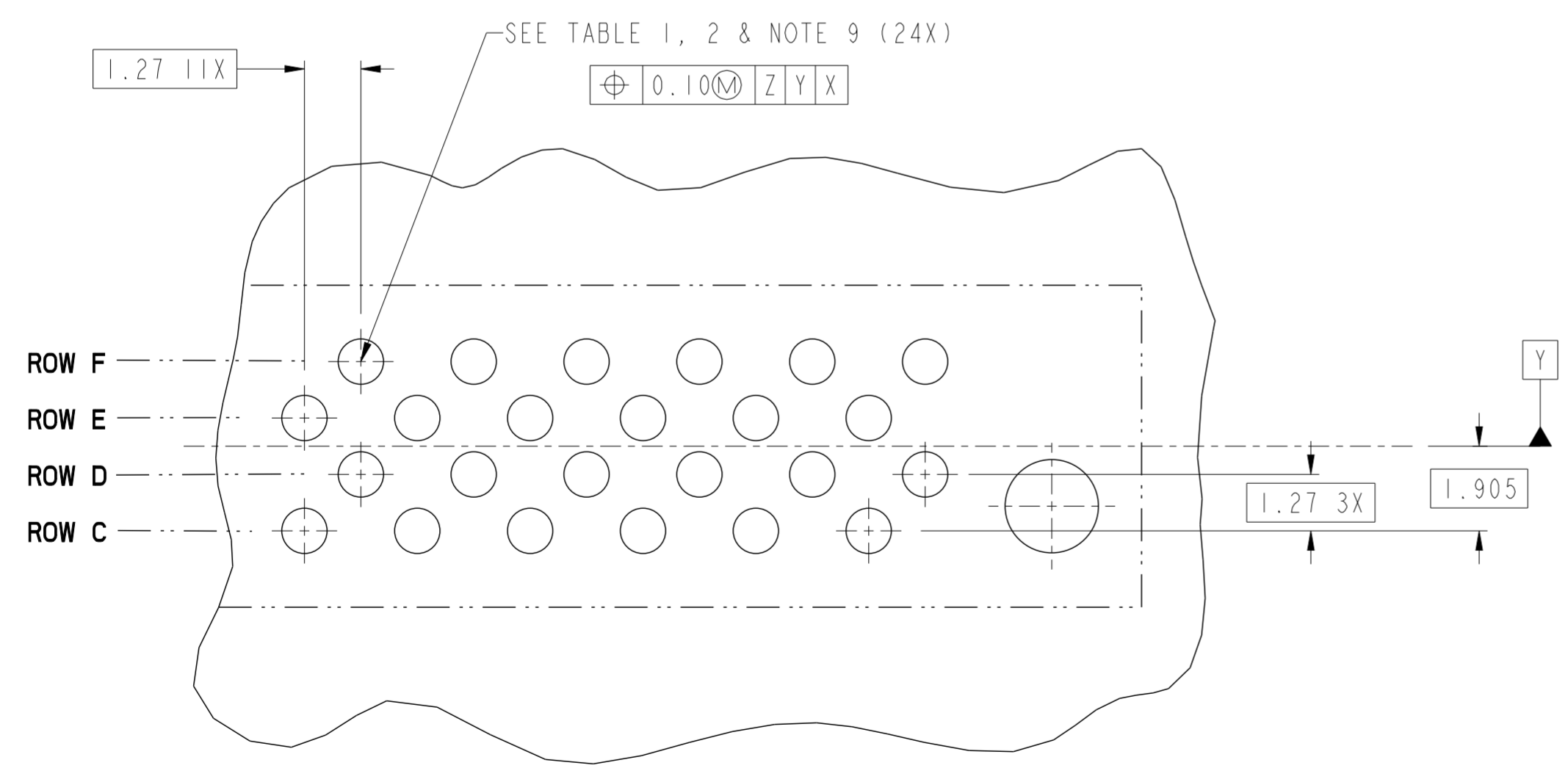
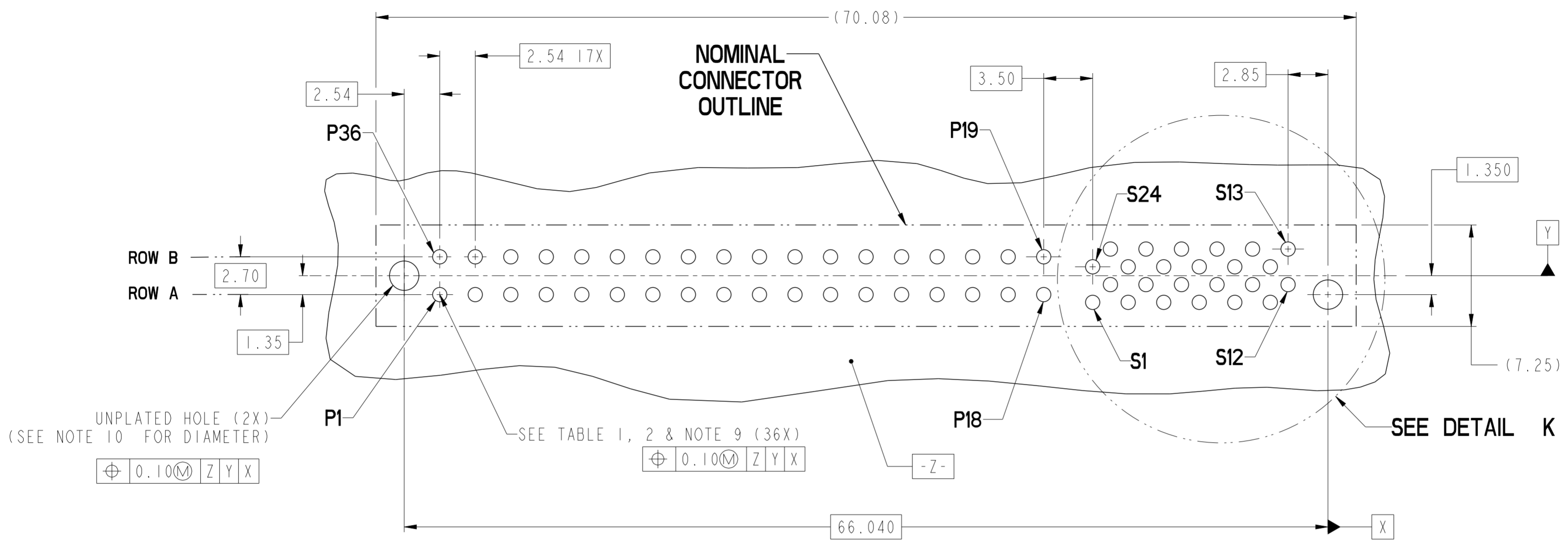


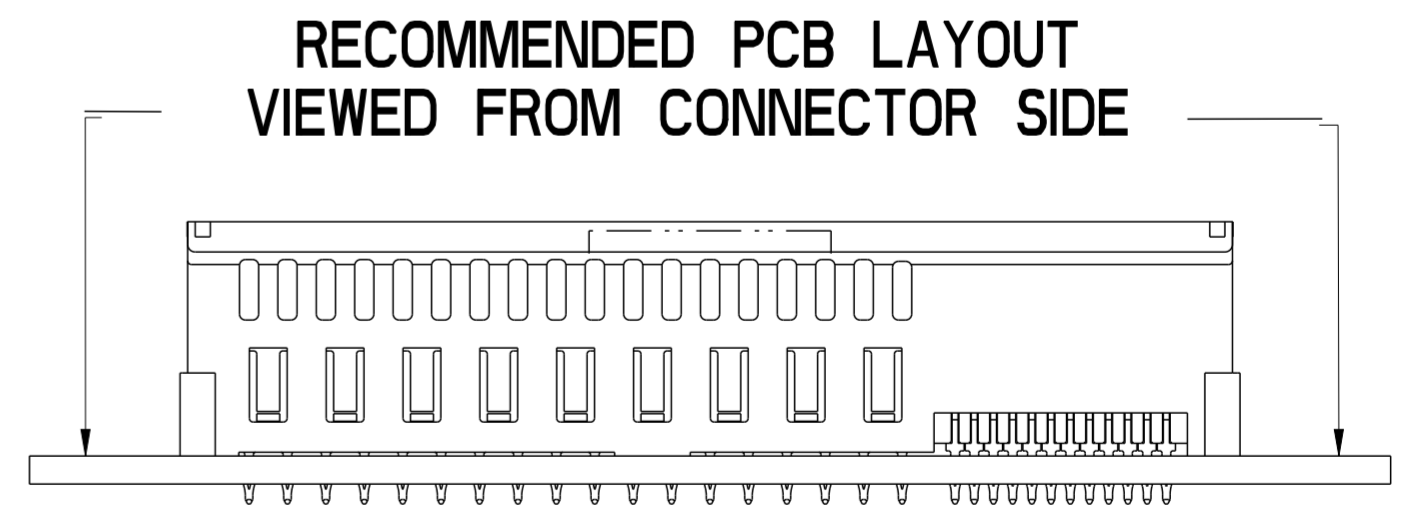
SECTION C-C

SECTION D-D

spec ref	-	dr	Wei-Long Zhang	2011/12/10	projection	MM	size	A2	scale	4:1
tolerance std	ASME Y14.5	eng	Wei-Long Zhang	2012/01/04	chr	-	ecn no	-	rel level	Released
surface	✓	appr	Pai-Ming Zheng	2012/01/05	product family	CARD EDGE	cat. no.	10119695	rev	A
ASME Y14.5	linear	0.X	±0.3	0.XX	±0.1	0.XXX	±0.05	angular	0°	±2°
		www.fci.com		title		VERT RECT (36P 24S) HIGH POWER CARD EDGE		Product - Customer Drw		sheet 1 of 4



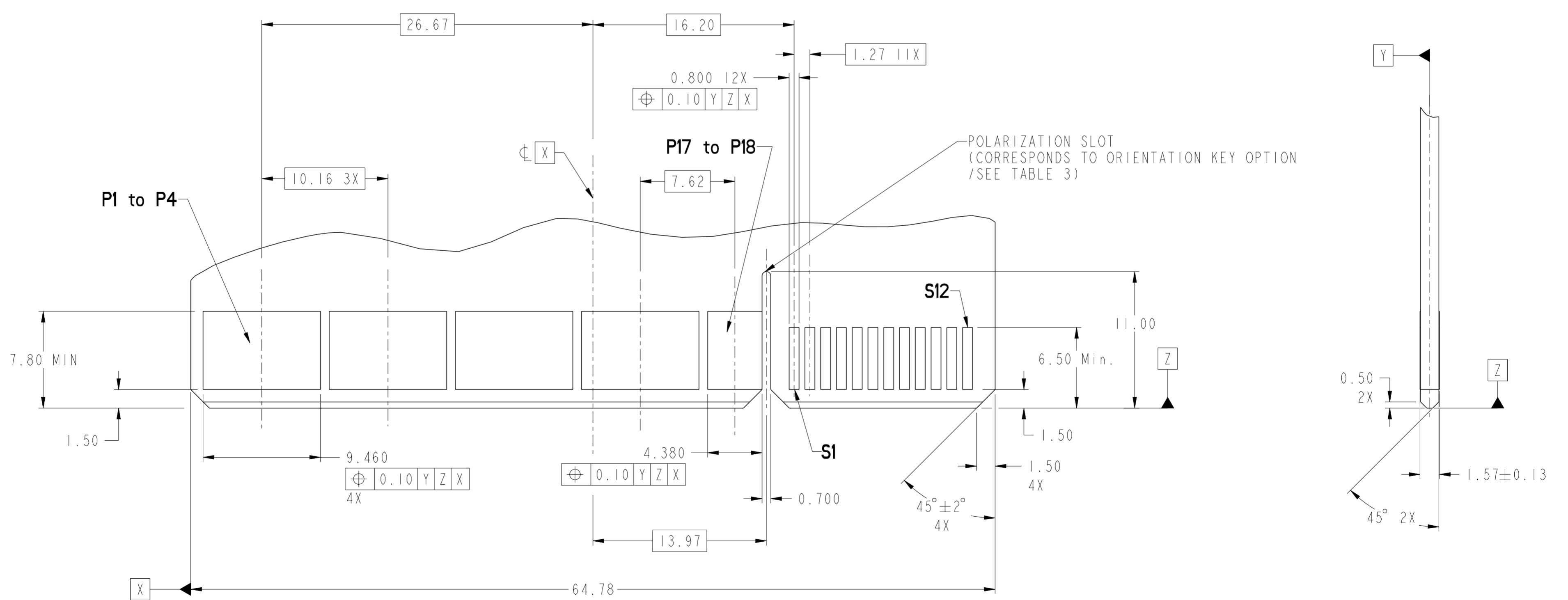
DETAIL K
SCALE 8:1



dr	Wei-Long Zhang	2011/12/10	projection	MM	size	A2	scale	4:1
eng	Wei-Long Zhang	2012/01/04			ecn no	-	rel level	Released
chr	-	-			product family	CARD EDGE		
appr	Pai-Ming Zheng	2012/01/05			cat. no.	-	Product - Customer Drw	sheet 2 of 4
title VERT RECT (36P 24S) HIGH POWER CARD EDGE			dwg no 10119695		rev A			

CONTACT TYPE	TOP LAYER DESCRIPTION	TABLE 1 (HPCE / SOLDER TAILS) PLATED THROUGH-HOLE REQUIREMENTS				
		DRILLED HOLE DIAMETER	COPPER THICKNESS	TIN-LEAD THICKNESS	TIN THICKNESS	FINISHED HOLE DIAMETER
POWER & SIGNAL	TIN-LEAD	1.10-1.16 (1.15 DRILL)	0.025 - 0.050	0.005 - 0.015	--	0.94 - 1.10
	IMMERSION TIN	1.10-1.16 (1.15 DRILL)	0.025 - 0.050	--	0.9 - 1.5um	0.94 - 1.10
	COPPER (SEE NOTE 8)	1.10-1.16 (1.15 DRILL)	0.025 - 0.050	--	--	0.94 - 1.10

CONTACT TYPE	TOP LAYER DESCRIPTION	TABLE 2 (HPCE / PRESS-FIT TAILS) PLATED THROUGH-HOLE REQUIREMENTS				
		DRILLED HOLE DIAMETER	COPPER THICKNESS	TIN-LEAD THICKNESS	TIN THICKNESS	FINISHED HOLE DIAMETER
POWER & SIGNAL	TIN-LEAD	0.81-0.86 (0.85 DRILL)	0.025 - 0.050	0.005 - 0.015	--	0.65 - 0.80
	IMMERSION TIN	0.81-0.86 (0.85 DRILL)	0.025 - 0.050	--	0.9 - 1.5um	0.70 - 0.80
	COPPER (SEE NOTE 8)	0.81-0.86 (0.85 DRILL)	0.025 - 0.050	--	--	0.70 - 0.80

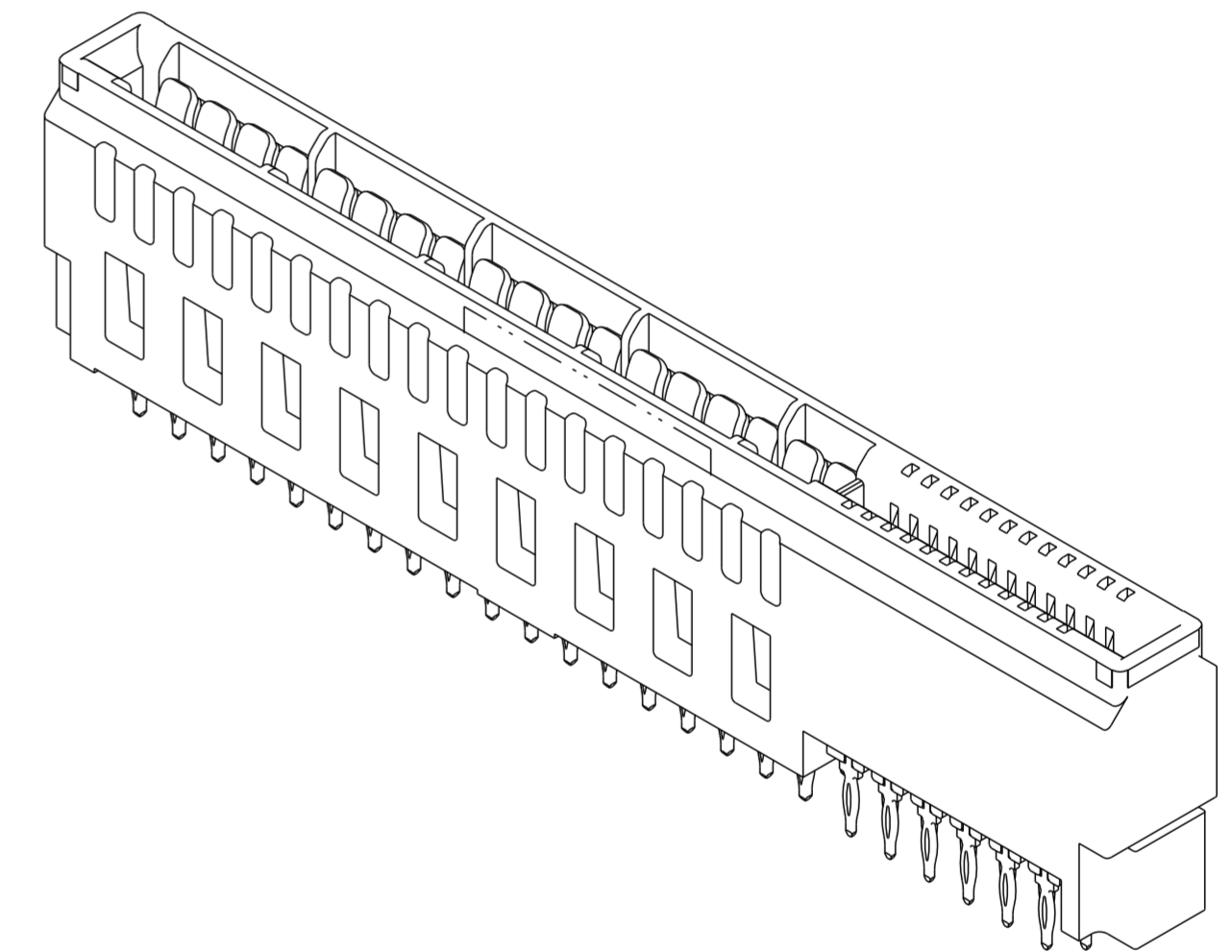


RECOMMENDED MATING BOARD FOOTPRINT

dr	Wei-Long Zhang	2011/12/10	projection	MM	size	A2	scale	4:1
eng	Wei-Long Zhang	2012/01/04		MM	ecn no	-	rel level	Released
chr	-	-						
appr	Pai-Ming Zheng	2012/01/05	product family	CARD EDGE	rel level	Released		
			VERT RECT (36P 24S) HIGH POWER CARD EDGE			dwg no 10119695	rev A	
www.fci.com			cat. no.	-	Product - Customer Drw	sheet 3 of 4		

HPCE PART NUMBER (TABLE 3)

PART NUMBER	TAIL TYPE	ORIENTATION KEY	DIM "A" TYPICAL TAIL LENGTH	DIM "B" RECOMMENDED BOARD THICKNESS	SPECIFIED APPLICATION TOOL
10119695-001LF	SOLDER	YES	3.17 ±0.25	1.59 - 2.38	NO
10119695-002LF	SOLDER	NO			
10119695-003LF	PRESS-FIT	YES	3.17 ±0.25	1.57 MIN	YES NOTE 11
10119695-004LF	PRESS-FIT	NO			



NOTES:

1. CONNECTOR MATERIALS:

HOUSING: HIGH TEMPERATURE THERMAL PLASTIC, BLACK
UL 94V-0 COMPLIANT
CONTACTS: HIGH PERFORMANCE COPPER ALLOY.

2. CONTACT FINISH REF. GS-12-604 SECTION 5.2.

3. PRODUCT SPECIFICATION: GS-12-604.

4. APPLICATION SPECIFICATION: GS-20-128.

5. PRODUCT MARKING (FCI - PART NUMBER & DATE CODE) ON HOUSING IN AREA SHOWN.

6. PACKAGING MEETS FCI SPECIFICATION GS-14-937.

7. HOUSING COMPONENT WILL WITHSTAND EXPOSURE TO 260°C PEAK TEMPERATURE FOR 60 SECONDS IN A CONVECTION, INFRA-RED, OR VAPOR PHASE REFLOW OVEN.

8. COPPER PLATING THICKNESS IN CENTER OF VIA-HOLE CAN BE NO MORE THAN 0.003 LESS THAN OTHER AREAS.

9. ALL HOLE SIZES ARE FINISHED HOLE SIZES.

10. MOUNTING HOLES ARE UNPLATED
 Ø 2.40 +/- 0.10 FOR PRESS-FIT TAILS
 Ø 2.25 +/- 0.05 FOR SOLDER TAILS

11. APPLICATION TOOL DRAWING: 10119453.

dr	Wei-Long Zhang	2011/12/10	projection	MM	size	A2	scale	4:1
eng	Wei-Long Zhang	2012/01/04			ecn no.	-	rel level	
chr	-	-			product family	CARD EDGE	rel level	Released
appr	Pai-Ming Zheng	2012/01/05			title	VERT RECT (36P 24S) HIGH POWER CARD EDGE		cat. no.
			www.fci.com		dwg no.	10119695		rev
					Product - Customer Drw		sheet 4 of 4	A