

## Orthogonal COMBICON headers for THR processes MSTBO 2,5/4-G1... THR R44 BK

The orthogonal COMBICON MSTBO 2,5/... headers with a 5.0 pitch are now available for use in the Through Hole Reflow process.

Components can be mounted automatically on the PCB without any problems.

The headers are made of highly temperature-resistant polyamide and are suitable for use in lead-free solder processes.

There is a 4-pos. version available and versions with two and three positions will follow shortly.

The integrated suction area allows cost and time-effective processing, since it is no longer necessary to remove a suction pad after processing.

The headers are supplied in tapes, so that common feeder systems can be used. They can also be supplied in bulk.



### COMBICON Select

The COMBICON search engine with CAD downloading

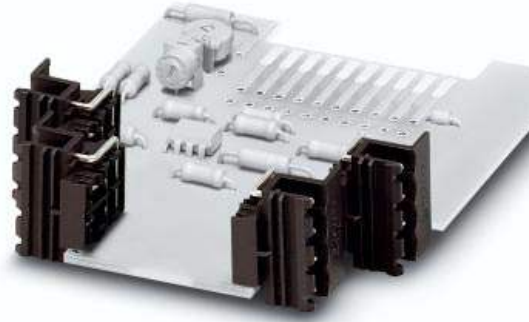


COMBICON Select – the printed circuit board connection software supports your workflow from the PCB and housing layout to the ordering process with:

- Systematic and fast selection of products
- Universal Internet aided engineering with extensive CAD downloading
- Easy-to-use e-shopping functions.

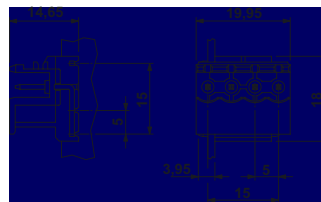
[select.phoenixcontact.com/combicon](http://select.phoenixcontact.com/combicon)

# Orthogonal COMBICON headers MSTBO 2,5/4-G1...THR R44 BK 5.0 mm Pitch

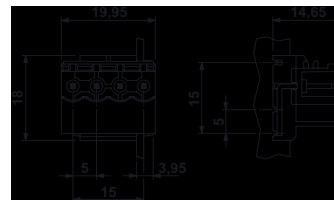


| Description   | No. of pos. | Dim. a [mm]            | Type                              | Order No.         | Pcs./Pkt. |
|---|-------------|------------------------|-----------------------------------|-------------------|-----------|
| <b>COMBICON header</b> , for soldering onto the PCB, color: black, „PCB on the left“  | 4           | 15                     | <b>MSTBO 2,5/4-G1L THR R44 BK</b> | <b>26 97 19 4</b> | 100       |
| <b>COMBICON header</b> , for soldering onto the PCB, color: black, „PCB on the right“ | 4           | 15                     | <b>MSTBO 2,5/4-G1L THR R44 BK</b> | <b>26 97 20 4</b> | 100       |
| <b>Technical data</b>   |             |                        |                                   |                   |           |
| Dimensions  |             |                        |                                   |                   |           |
| Pitch   |             | [mm]                   | see description                   |                   |           |
| Hole diameter   |             | [mm]                   | 5.0                               |                   |           |
| Pin dimensions  |             | [mm]x[mm]              | 1.5                               |                   |           |
|   |             |                        | 1 x 1                             |                   |           |
| <b>Technical data in accordance with IEC/ DIN VDE</b>                                 |             |                        |                                   |                   |           |
| Insulating material group   |             | —                      | I                                 |                   |           |
| Surge voltage category / contamination class  |             | —/—                    | III / 3                           | III / 2           | II / 2    |
| Rated voltage   |             | [V]                    | 250                               | 320               | 400       |
| Rated surge voltage   |             | [kV]                   | 4                                 | 4                 | 4         |
| Nominal current / cross section   |             | [A]/[mm <sup>2</sup> ] | 16 / —                            |                   |           |
| Maximum load current / cross section  |             | [A]/[mm <sup>2</sup> ] | 16 / —                            |                   |           |
| <b>Insulating material</b>  |             |                        |                                   |                   |           |
| Inflammability class in acc. with UL 94   |             |                        |                                   |                   |           |
| <b>Approval data (UL/CUL and CSA)</b>   |             |                        |                                   |                   |           |
| Nominal voltage / current / conductor sizes   |             | UL/CUL: [V]/[A]/AWG    | 300 / 10 / ---                    |                   |           |

Feed direction R44

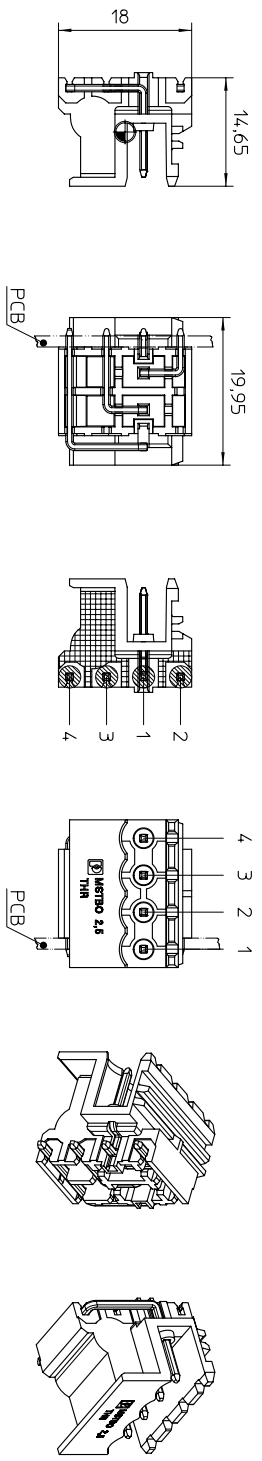


MSTBO 2,5/4-G1L THR R44 BK



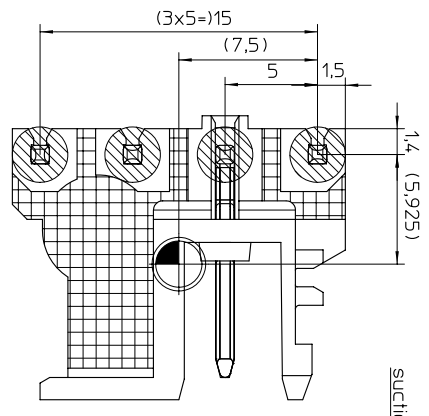
MSTBO 2,5/4-G1R THR R44 BK

MSTBO 2,5/ 4-G1R THR  
2:1

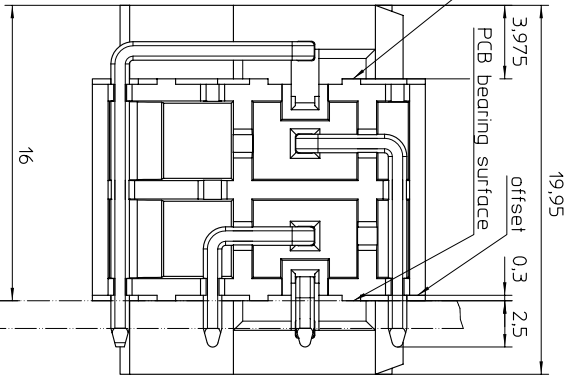


MSTBO 2,5/ 4-G1L THR

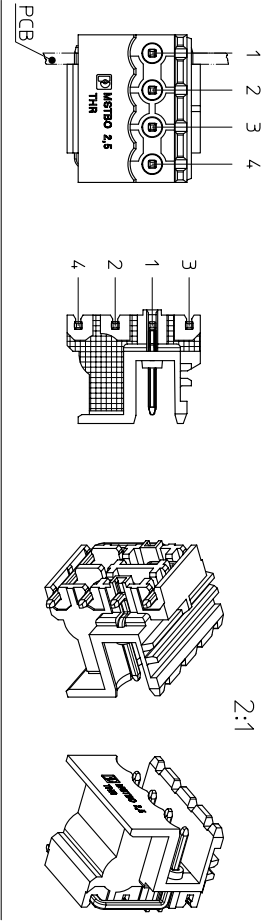
5:1



suction surface

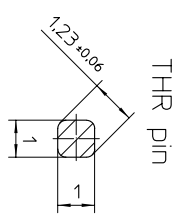


PCB bearing surface



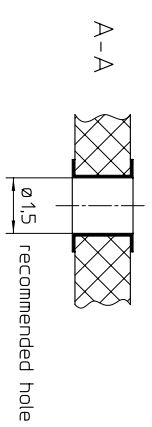
2:1

10:1



THR pin

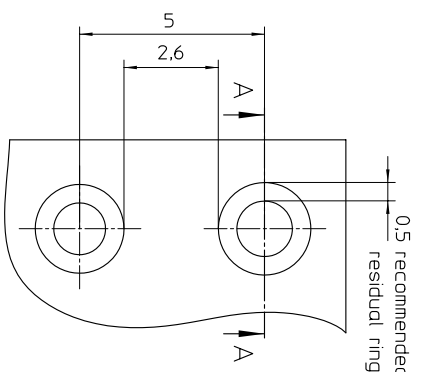
PCB Detail



A-A

recommended hole

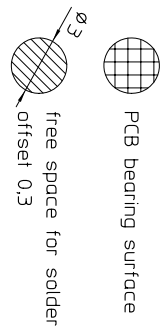
0,5 recommended residual ring



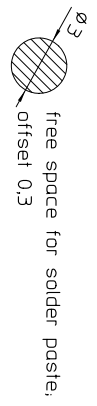
schematic description



zero part



PCB bearing surface

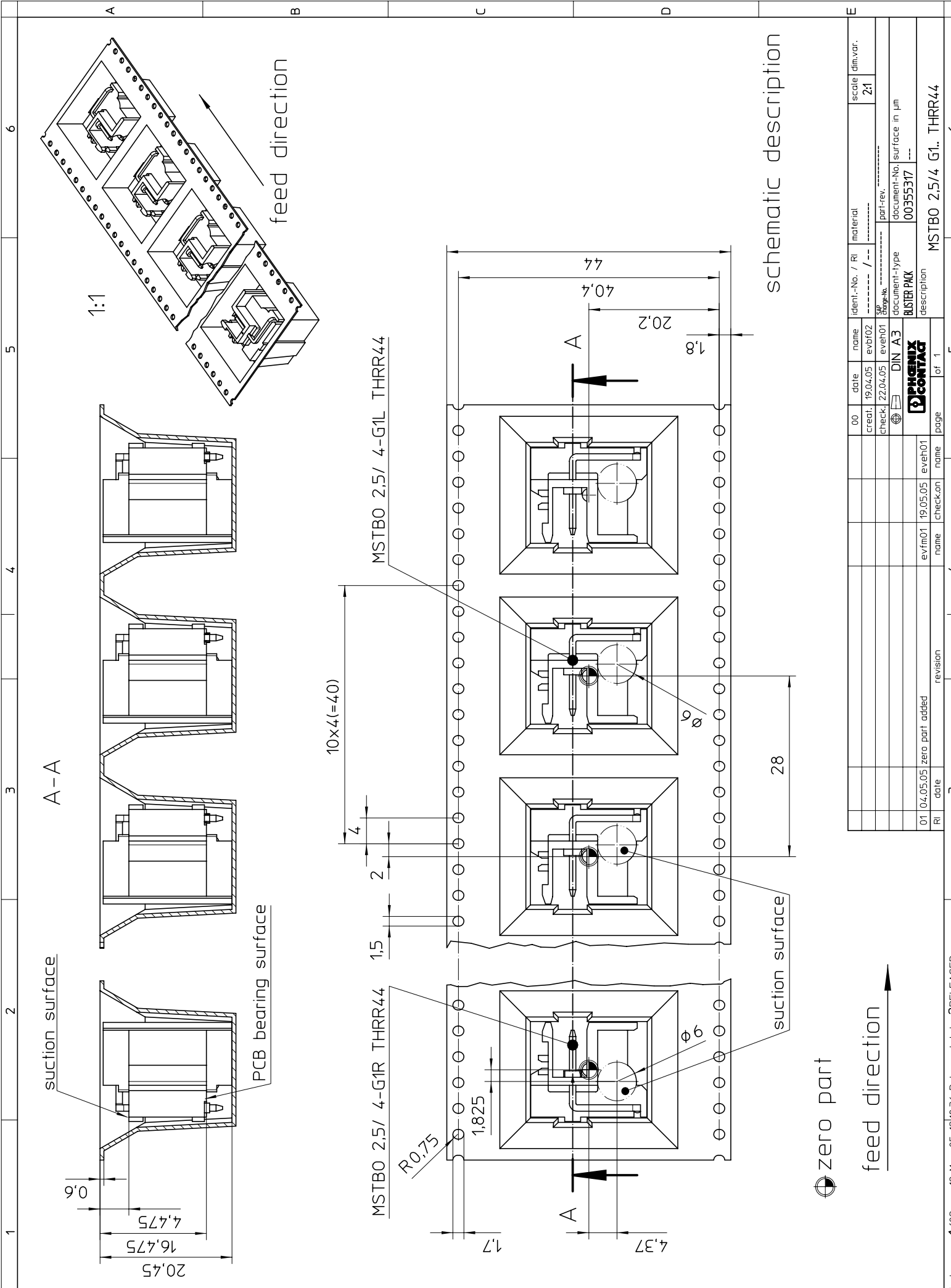


free space for solder paste;  
offset 0,3

Weitergabe sowie Vervielfältigung dieses Dokuments, die Verwertung und Mitteilung seines Inhaltes gemäß §18 UWG verboten, soweit nicht ausdrücklich gestattet. Zuwiderhandlungen verpflichten zu Schadenersatz (§19 UWG). Alle Rechte vorbehalten, insbesondere das Recht, Patent-, Gebrauchsmuster- oder Geschmacksmustereintragungen durchzuführen. Phoenix Contact GmbH & Co. KG

The copying, distribution and utilization of this document as well as the communication of the contents to others without expressed authorization is prohibited according to §18 UWG German Law. Offenders will be held liable for the payment of damages according to §19 UWG German Law. All rights reserved, in particular the right to carry out patent, utility model or ornamental design registrations. Flörschmarktstraße 8 D-32825 Blomberg

The copying, distribution and utilisation of this document as well as the communication of its contents to others without expressed authorization is prohibited according to §19 UWG German Law. Offenders will be held liable for the payment of damages according to §19 UWG German Law. All rights reserved. In particular the right to carry out patent, utility model or ornamental design registrations. Fachmarktstraße 8 D-32625 Blomberg



schematic description



zero part

feed direction

|  |          |                 |         |           |          |      |           |      |      |      |   |
|--|----------|-----------------|---------|-----------|----------|------|-----------|------|------|------|---|
| 01   | 04.05.05 | zero part added | evr/m01 | 19.05.05  | evet/h01 | name | check-con | name | page | of 1 | 5 |
| RI   | date     | revision        | name    | check-con | name     | name | check-con | name | page | of 1 | 4 |
|  |          |                 |         |           |          |      |           |      |      |      |   |
| DIN A3                                       |          |                 |         |           |          |      |           |      |      |      |   |
| document-type<br><b>BUSTER PACK</b>          |          |                 |         |           |          |      |           |      |      |      |   |
| document-No. surface in µm<br>00355317       |          |                 |         |           |          |      |           |      |      |      |   |
| description<br><b>MSTBO 2.5/4 G1. THRR44</b> |          |                 |         |           |          |      |           |      |      |      |   |
| scale dim.var.<br>2:1                        |          |                 |         |           |          |      |           |      |      |      |   |