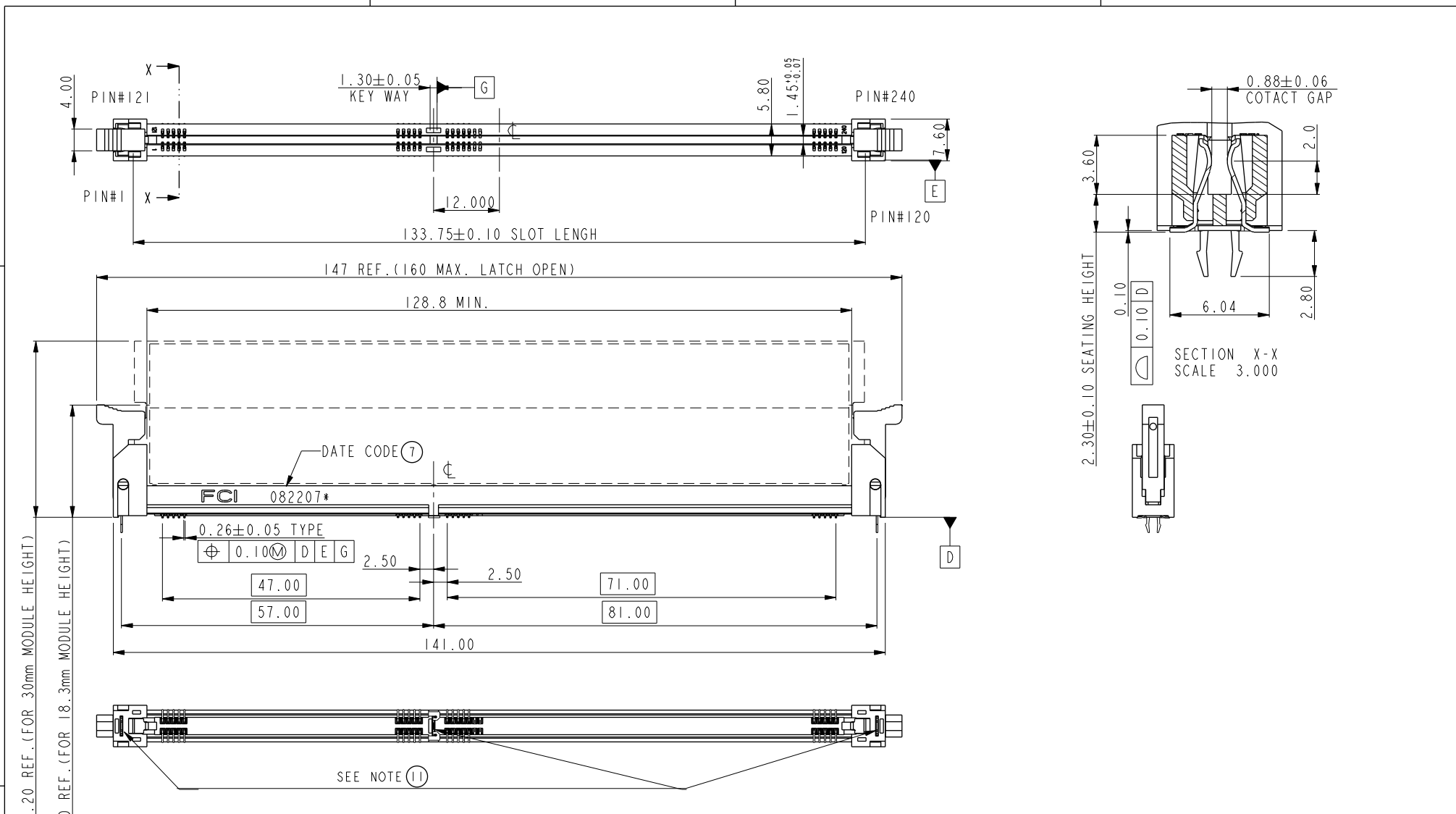


A

B

C

D



A

B

C

D

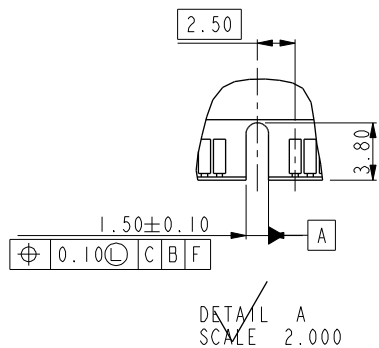
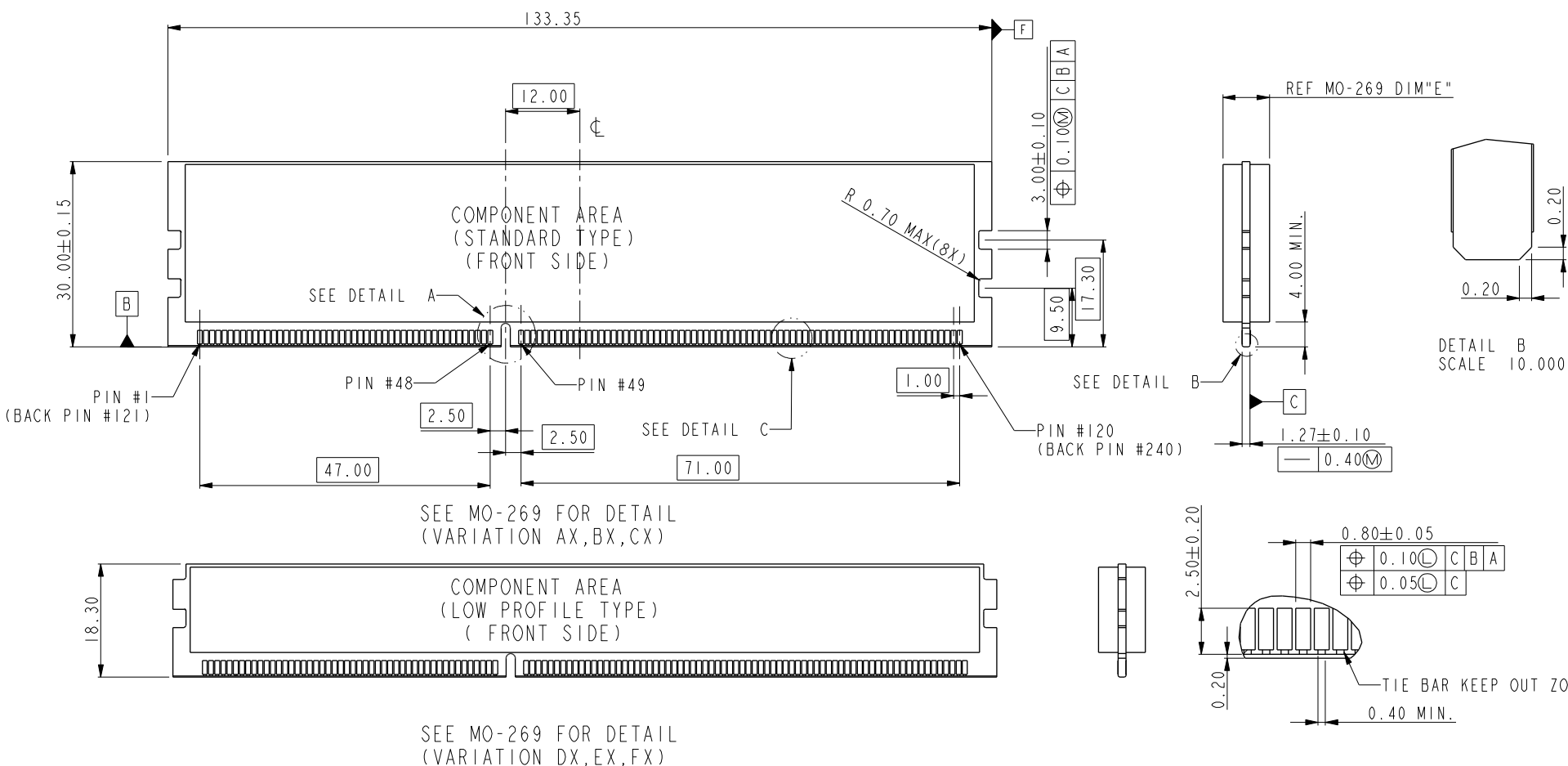
spec ref *		dr Rick Bian		2010/07/04		projection		size A4		scale 1.000	
tolerance std		eng Jeny Ren		2016/12/01						ecn no ELX-DG-25425-1	
ASME Y14.5		chr -		-						rel level Released	
surface		appr Nickor Zuo		2016/12/02		product family		rev		10109498	
		linear		0.X		±0.50		Amphenol FCI title SMT DDRIII SOCKET ASS'Y DDRIII 240P RDIMM SOCKET(FOR CISCO)		www.fci.com	
		0.XX		±0.30							
ASME Y14.5		angular		0°		±2°					
								sheet 1 of 4		D	

A

B

C

D



dr	Rick Bian	2010/07/04	projection	MM	size	A4	scale	1.000
eng	Jeny Ren	2016/12/01			ecn no ELX-DG-25425-1			
chr	-	-			rel level Released			
appr	Nickor Zuo	2016/12/02	product family			rev		
Amphenol FCI		title SMT DDRIII SOCKET ASS'Y DDRIII 240P RDIMM SOCKET(FOR CISCO)			dwg no 10109498		rev D	
www.fci.com		cat. no. *		Product - Customer Drw			sheet 2 of 4	

A

B

C

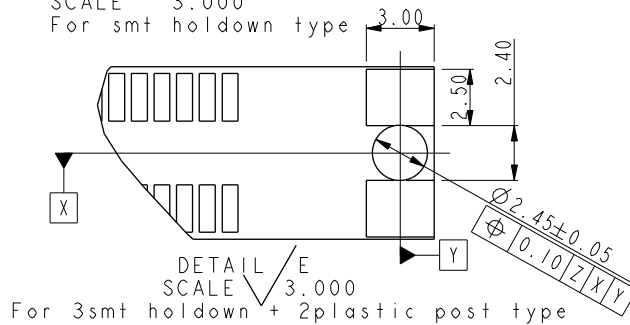
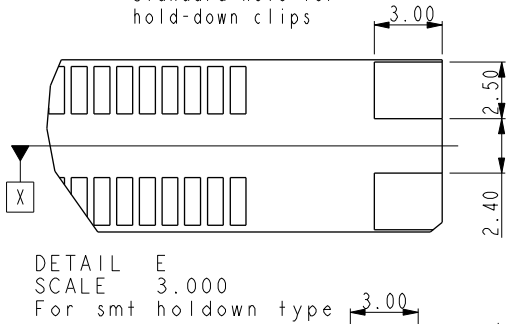
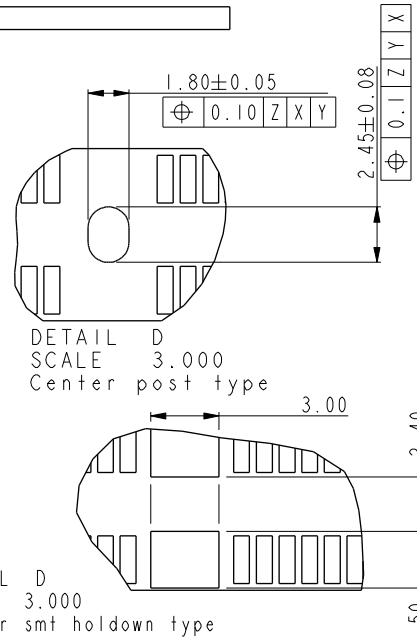
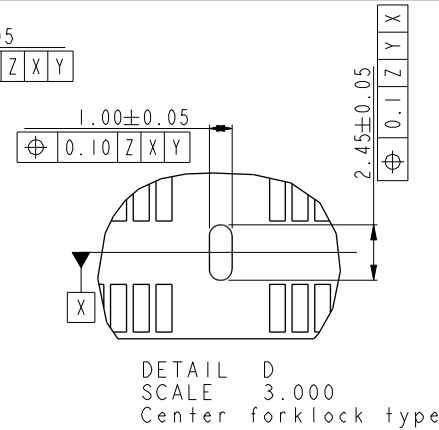
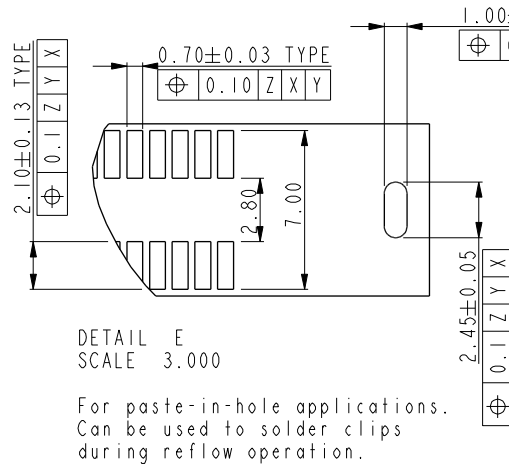
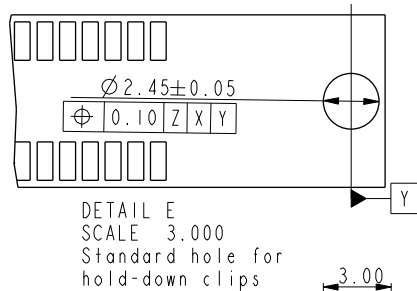
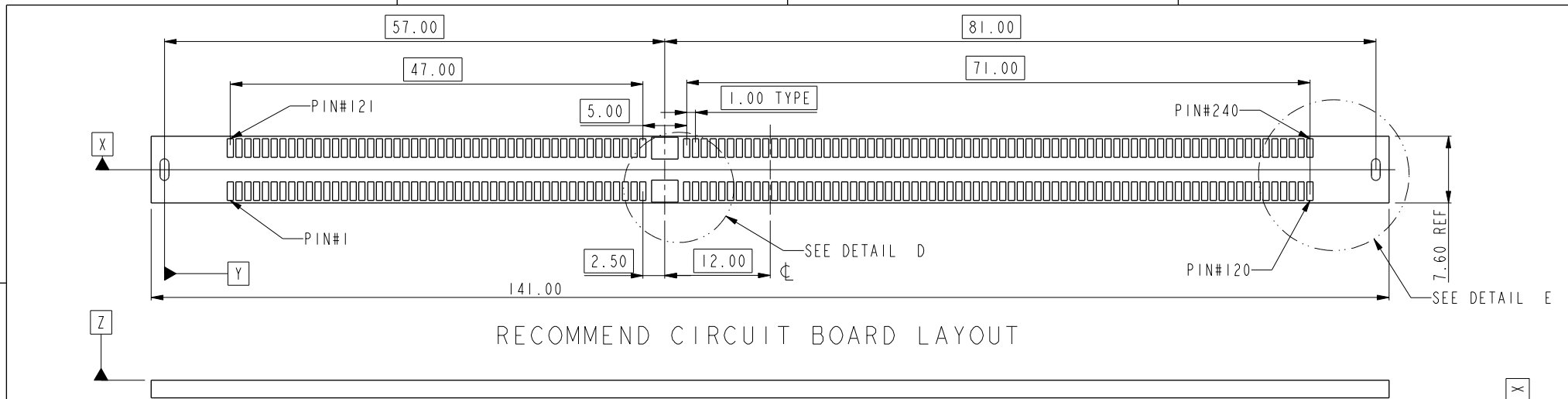
D

A

B

C

D



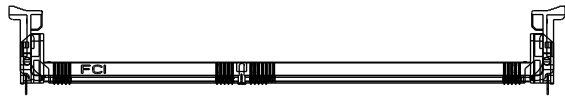
dr	Rick Bian	2010/07/04	projection	MM	size	A4	scale	1.000
eng	Jeny Ren	2016/12/01			ecn no	ELX-DG-25425-1		
chr	-	-	product family	rel level	Released			
appr	Nickor Zuo	2016/12/02	title		SMT DDRIII SOCKET ASS'Y		rev	
www.fci.com			cat. no.		* Product - Customer Drw		sheet 3 of 4	
dwg no				10109498		D		

A

B

C

D



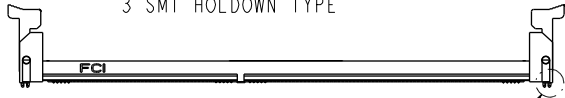
SCALE 0.500
10109498-10***
CENTER SMT HOLDOWN TYPE



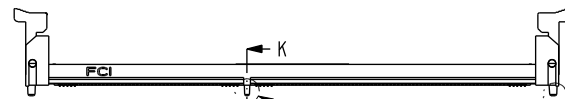
SCALE 0.500
10109498-11***
3 FORK LOCK TYPE



SCALE 0.500
10109498-12***
3 SMT HOLDOWN TYPE



SCALE 0.500 SEE DETAIL N
10109498-13***
3 SMT HOLDOWN AND 2 PLASTIC POST TYPE



SCALE 0.500 SEE DETAIL J
10109498-15***
3 PLASTIC POST TYPE SEE DETAIL M

NOTES:

- MATERIAL:
HOUSING: HIGH PERFORMANCE RESINS, GLASS FILLED UL94V-0 RATED.
EJECTOR: HIGH PERFORMANCE RESINS, GLASS FILLED UL94V-0 RATED.
TERMINAL: HIGH PERFORMANCE COPPER ALLOY
METAL CLIP: COPPER ALLOY.
- FCI LOGO TO BE APPROXIMATELY LOCATED AS SHOWN ON PRINT.
- PRODUCT SPECIFICATION: GS-12-486.
- PACKAGING SPECIFICATION: GS-14-899.
- RECOMMENDED STENCIL THICKNESS NO LESS THAN 0.15 mm.
- FOR OPTIMUM PERFORMANCE, THE TIE BAR IS TO BE ON AN INTERNAL LAYER SO THAT THE REMNANT CANNOT CAUSE CONTACT DAMAGE.
- THE DATE CODE IS SHOWN "MDDYY*"
"*" MEANS PRODUCTION LINE.
- THIS PRODUCT MEETS EUROPEAN UNION DIRECTIVES AND OTHER COUNTRY REGULATIONS AS DESCRIBED IN GS-22-008.
- THE HOUSING WILL WITH STAND EXPOSURE TO 260°C PEAK TEMPERATURE FOR 10 SECONDS IN AN IR REFLOW SOLDERING APPLICATION.
- PRODUCT APPLICATION SPEC GS-20-089.
- THE HOLDOWN TYPES ARE OPTION FOR HOLDOWN OR FORKLOCK.



STYLE : MECHANICAL KEYING

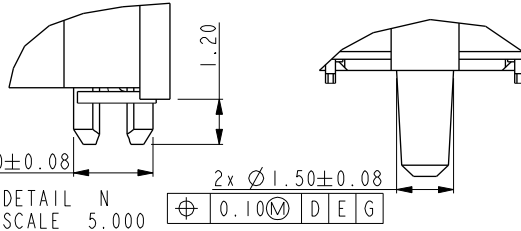
1 : 1.5 VOLT. W/ CENTER KEY

HOLD DOWN TYPE

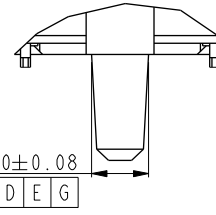
- 0 : CENTER HOLD DOWN, FORKLOCK AT BOTH END
1: 3 FORKLOCK TYPE
2: 3 SMT HOLDOWN TYPE
3: 3 SMT HOLDOWN AND 2 PLASTIC POST
5: 3 PLASTIC POST TYPE

PACKAGE AND MYLAR OPTION

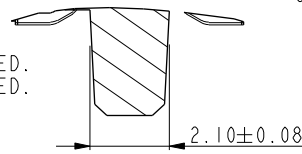
- 0: SOFT TRAY WITHOUT MYLAR (OBSOLETE)
1: HARD TRAY WITH MYLAR
2: HARD TRAY WITHOUT MYLAR
3: SOFT TRAY WITH MYLAR (OBSOLETE)
4: CUSTOMIZED HARD TRAY WITH MYLAR
5: CUSTOMIZED HARD TRAY WITHOUT MYLAR



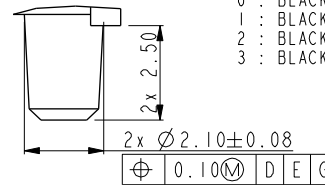
DETAIL N
SCALE 5.000



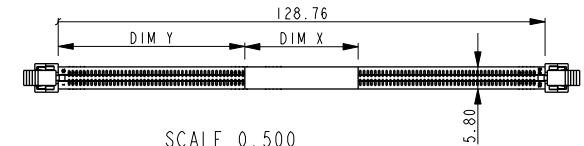
DETAIL J
SCALE 5.000



SECTION K-K
SCALE 5.000



DETAIL M
SCALE 5.000



SCALE 0.500
WITH MYLAR TAPE (OPTIONAL)

10109498 - □ □ □ □

PLATING

CODE	CONTACT	SOLDERTAIL	UNDERPLATE	NOTE
1	10u" (0.25um) MIN. GOLD	100u" (2.54um) MIN. TIN-LEAD	50u" (1.27um) MIN. NICKEL OVERALL	CONTACT NON-LUBRICANT
2	15u" (0.38um) MIN. GOLD			
3	30u" (0.76um) MIN. GOLD			
4	GOLD FLASH			
5	10u" (0.25um) MIN. GOLD			CONTACT LUBRICATED
6	15u" (0.38um) MIN. GOLD			
7	30u" (0.76um) MIN. GOLD			
8	GOLD FLASH			
1LF	10u" (0.25um) MIN. GOLD	100u" (2.54um) MIN. 100% MATT TIN	50u" (1.27um) MIN. NICKEL OVERALL	CONTACT NON-LUBRICANT
2LF	15u" (0.38um) MIN. GOLD			
3LF	30u" (0.76um) MIN. GOLD			
4LF	GOLD FLASH			
5LF	10u" (0.25um) MIN. GOLD			CONTACT LUBRICATED
6LF	15u" (0.38um) MIN. GOLD			
7LF	30u" (0.76um) MIN. GOLD			
8LF	GOLD FLASH			

COLOR OF HOUSING AND EJECTOR

- 0 : BLACK HOUSING + IVORY EJECTOR
1 : BLACK HOUSING + BLACK EJECTOR
2 : BLACK HOUSING + BLUE(653C) EJECTOR
3 : BLACK HOUSING + YELLOW(1235C) EJECTOR

dr	Rick Bian	2010/07/04	projection	MM	size	A4	scale	1.000	
eng	Jeny Ren	2016/12/01			← →	ecn no	ELX-DG-25425-1		
chr	-	-				rel level	Released		
appr	Nickor Zuo	2016/12/02	product family						
Amphenol FCI	SMT DDRIII SOCKET ASS'Y			dwg no	10109498			rev	D
www.fci.com	cat. no.	*	Product - Customer Drw			sheet 4 of 4			