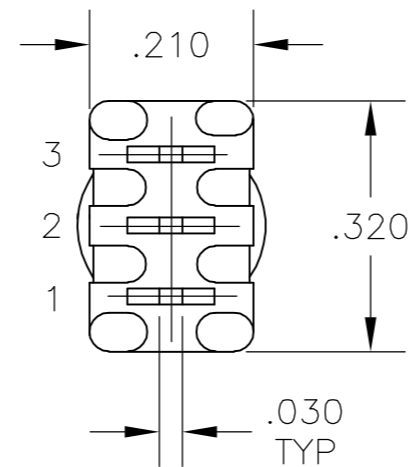
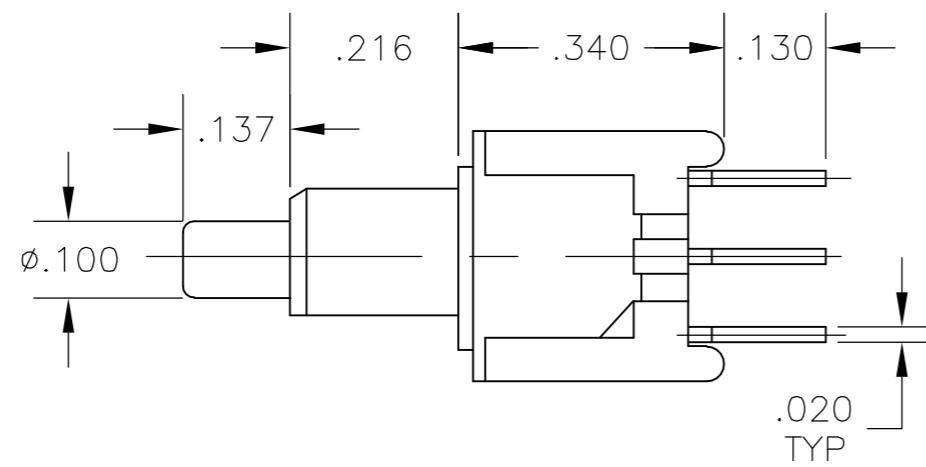
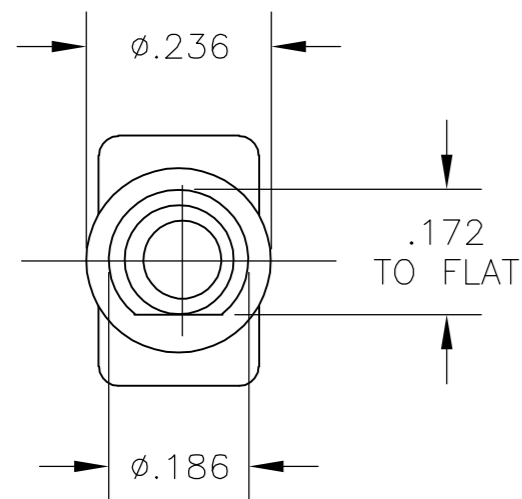
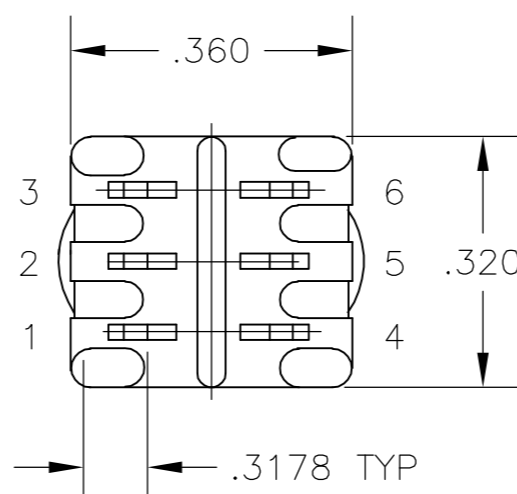
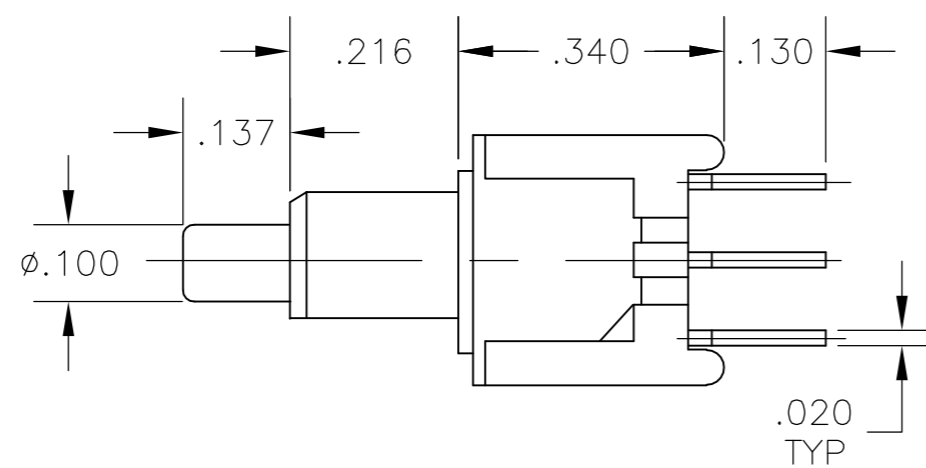
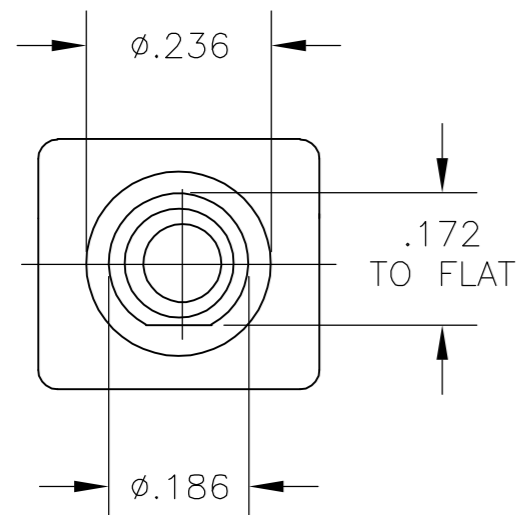


THIS DRAWING IS UNPUBLISHED. RELEASED FOR PUBLICATION  
 © COPYRIGHT BY TYCO ELECTRONICS CORPORATION. ALL RIGHTS RESERVED.

LOC		DIST		REVISIONS			
AD	OO	P	LTR	DESCRIPTION	DATE	DWN	APVD
		B		ECO 06 000585	08AUG06	BSV	MZ



TYPE SP



TYPE DP

SPECIFICATIONS:

MATERIALS:

CASE: HIGH TEMPERATURE POLYESTER, UL 94V-0.  
 ACTUATOR BUTTON: THERMOPLASTIC, COLORS: SEE CHART BELOW.  
 MOVING CONTACT: COPPER ALLOY, GOLD PLATED.  
 FIXED CONTACT: COPPER ALLOY, GOLD PLATED.  
 TERMINALS: COPPER ALLOY, TIN LEAD PLATED.  
 TERMINAL SEAL: SP EPOXY  
 DP EPOXY OPTIONAL.

ELECTRICAL:

CONTACT RATING: 0.4 VA MAX. @ 20 VDC OR PEAK AC.  
 INITIAL CONTACT RESISTANCE: 20 MILLIOHMS MAX.  
 INSULATION RESISTANCE: 1,000 MEGOHMS @ 500 VDC MIN.  
 DIELECTRIC STRENGTH: 1,000 VAC.  
 LIFE EXPECTANCY: 1 POLE = 60,000 CYCLES  
 2 POLES = 50,000 CYCLES.

MECHANICAL:

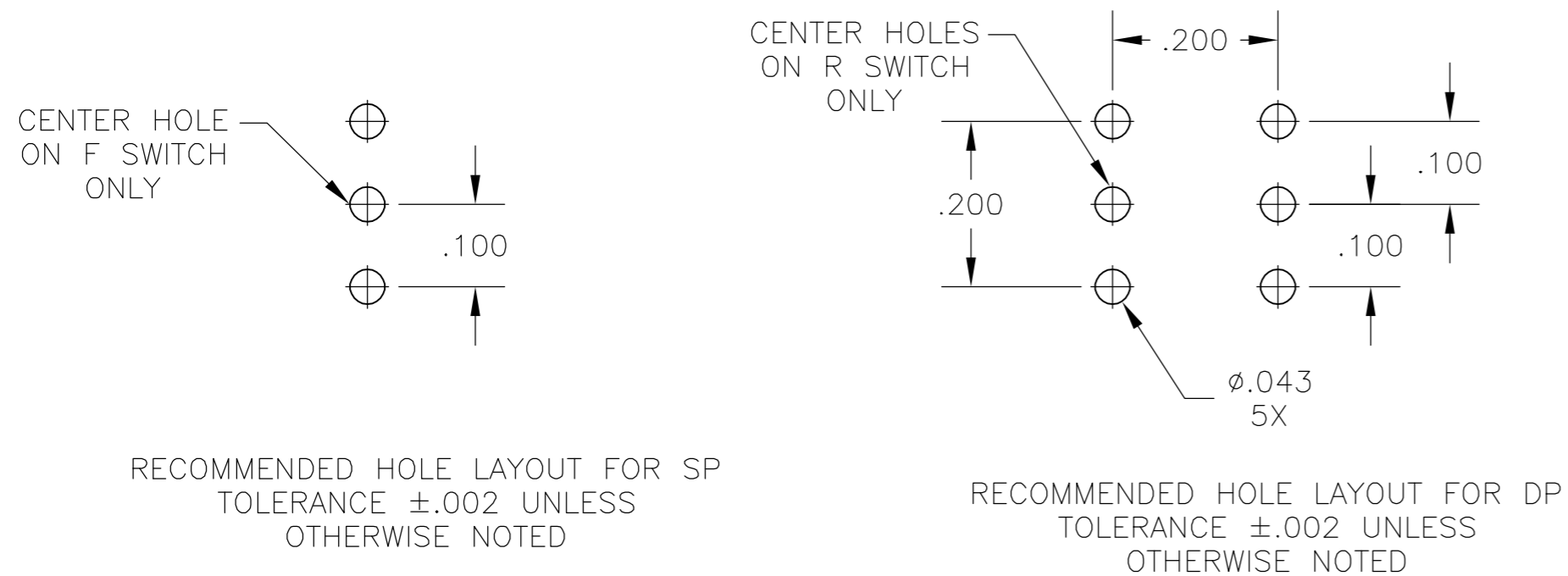
ACTUATION FORCE: 50 TO 400g.  
 ACTUATION TRAVEL: .030 APPROX.

ENVIRONMENTAL:

OPERATING TEMPERATURE: -22°F TO +149°F (-30°C TO +65°C).  
 STORAGE TEMPERATURE: -22°F TO +149°F (-30°C TO +65°C).

NOTES:

- INTERPRET DRAWING PER ASME Y14.5M-1994.
- SUPPLIED WITH MOUNTING HARDWARE.



OBSOLETE	TPB21RGPC2	8-1437571-4
OBSOLETE	TPB21RGPC0	8-1437571-3
	TPB21MGPC2	8-1437571-0
	TPB21MGPC0	7-1437571-9
OBSOLETE	TPB11FGPC6	6-1437571-7
OBSOLETE	TPB11FGPC2	6-1437571-6
	TPB11FGPC0	6-1437571-5
OBSOLETE	TPB11CGPC6	5-1437571-4
	TPB11CGPC2	5-1437571-3
	TPB11CGPC0	5-1437571-1
	ALCO MODEL	TYCO PART NO

TERMINALS CONNECTED WITH BUTTON IN POSITIONS SHOWN.		
SWITCH MODEL	FLAT	FLAT
TPB11CG-PC (*)	OFF	1-3(MOM)
TPB11FG-PC (*)	2-1	2-3(MOM)
TPB21MG-PC (*)	OFF	1-3 (MOM) 4-6
TPB21RG-PC (*)	2-1 5-4	2-3 (MOM) 5-6

NOTE:  
 TERMINAL DESIGNATION NUMBERS ARE FOR REFERENCE ONLY AND DO NOT APPEAR ON SWITCHES.

THIS DRAWING IS A CONTROLLED DOCUMENT.

DWN	TRU-D	12SEP96	<b>tyco</b> Electronics	Tyco Electronics Corporation Harrisburg, Pa 17105-3608		
CHK	-	-		NAME		
APVD	-	-	PRODUCT SPEC			
APPLICATION SPEC			SIZE			
WEIGHT			CAGE CODE			
CUSTOMER DRAWING			DRAWING NO			
SCALE			RESTRICTED TO			

SCALE: 4:1 SHEET 1 OF 1 REV B

(*)	BUTTON COLOR
(0)	BLACK
(2)	RED
(6)	BLUE

DIMENSIONS:	TOLERANCES UNLESS OTHERWISE SPECIFIED:
INCHES	0 PLC ± -
	1 PLC ± -
	2 PLC ± -
	3 PLC ± .010
	4 PLC ± -
	ANGLES ± 1°
MATERIAL	FINISH
SEE SPECIFICATIONS	SEE SPECIFICATIONS

5-1437571-1

A