

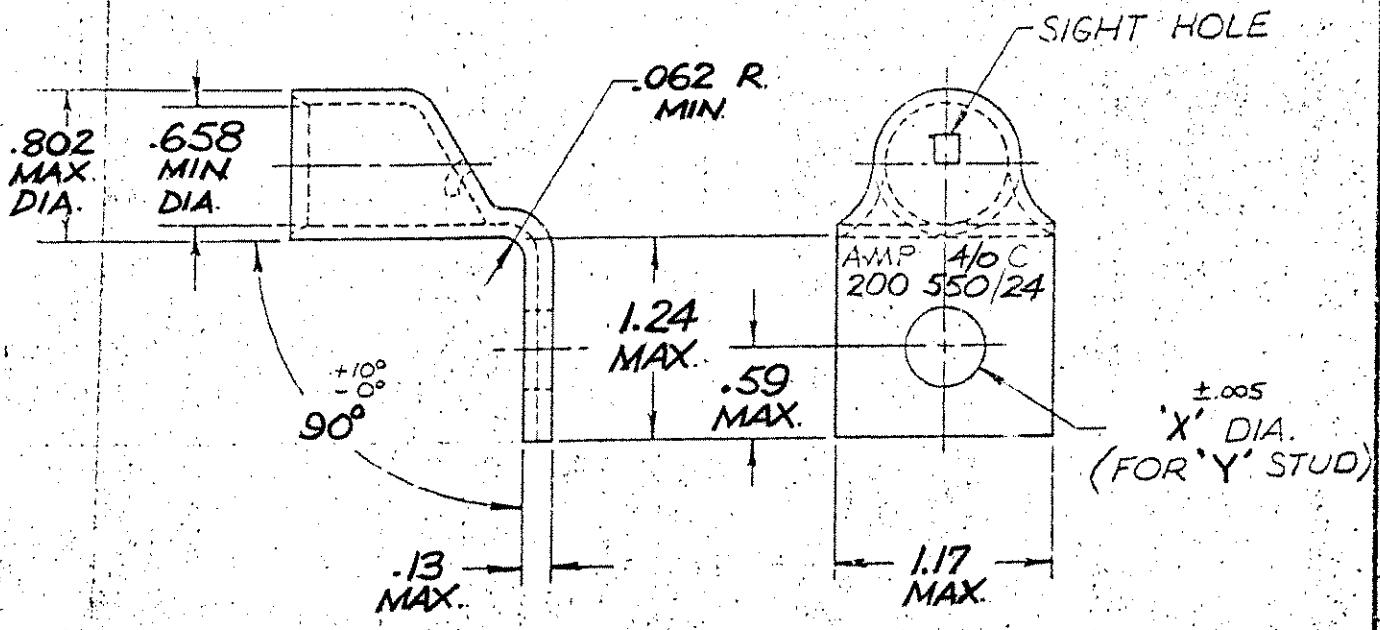
© COPYRIGHT 1975 BY AMP INCORPORATED, HARRISBURG, PA. ALL INTERNATIONAL RIGHTS RESERVED. AMP INCORPORATED PRODUCTS COVERED BY U.S. AND FOREIGN PATENTS AND PATENTS PENDING.

REVISIONS				
LTR	DESCRIPTION	DATE	APPROVED	P/F
D	REMOVED PER NPS 76-1627	2/4	6/22/77	AKW
A	REL -4 S2-20011	2/2	11/22/72	AKW
B	OBS -1 PER G-193	17	3/16/78	DKS
C	REACTIVATE PER G-5920	BT	5/19/72	DKS
D	REACT PER 0720-0142-94	BT	8/5/74	DKS
E	OBS -1 PER 0720-0964-96		6/96	DKS WTV
F	REV PER 063A-0561-01		10/02	DKS/MS

UNPUBLISHED AND UNREGISTERED WITHOUT WRITTEN PERMISSION OF AMP INCORPORATED

S

54664



	1/2	.515	54664-4
OBSOLETE	<del>3/8</del>	<del>.390</del>	<del>54664-1</del>
	'Y'	'X'	PART NO

UNLESS OTHERWISE SPECIFIED DIMENSIONS ARE IN INCHES. TOLERANCES ON: DECIMALS ± .01 ANGLES ± 5°	CONTRACT NO	AMP INCORPORATED Harrisburg, Pa.
	DRI: <i>Don W. Miller</i> 6/22/77 CHK: <i>Don W. Miller</i> 6/23/77	
MATERIAL COPPER (ASTM B-75)	APPD <i>Don W. Miller</i>	SIZE A
FINISH TIN PLATE (MIL-T-10727)	APPD <i>Don W. Miller</i> 6/23/77	CODE IDENT NO 00779
	OTHER APPD	DRAWING NO 54664
		SCALE NTS
		SHEET