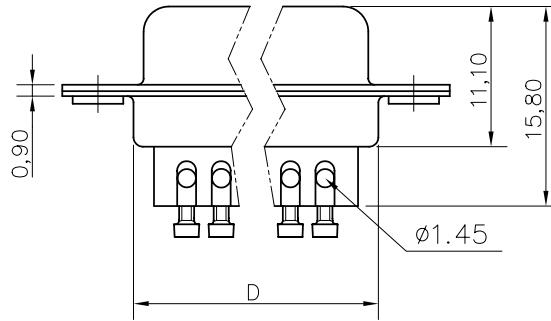
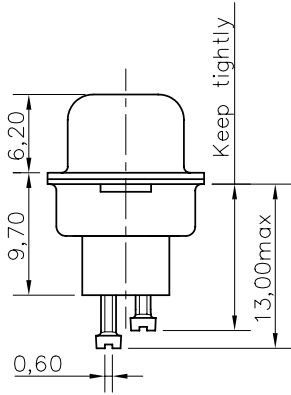
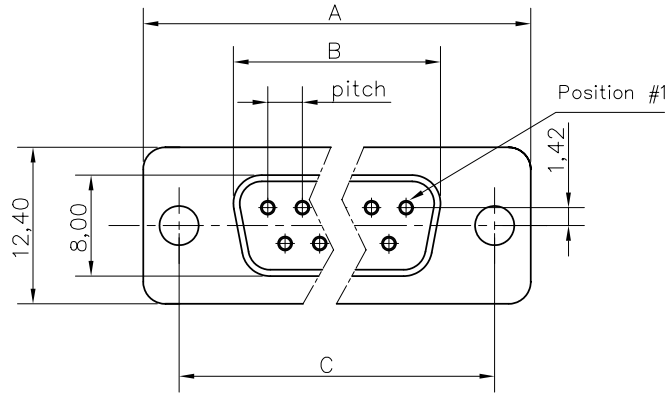


This document is the property of Amphenol Corporation and is delivered on the express condition that it is not to be disclosed, reproduced or used, in whole or in part, for manufacture or sale by anyone other than Amphenol Corporation without its prior consent, & that no right is granted to disclose or to use any information in this document.



Customer drawing

Nb of contacts	Dimensions				
	A	B	C	D	pitch
9	30.70	16.40	25.00	19.40	2.74
15	39.00	24.80	33.30	27.70	2.74
25	52.90	38.50	47.00	41.40	2.77
37	69.20	54.90	63.50	57.90	2.77



REVISIONS				
SYM	ECN	DESCRIPTION	DATE	APPROVED
1			04/14/08	

D-SUB TECHNICAL DATA

SHELL : Steel 2.5um(100u") min tin over 1.25um(50u") min nickel
 BODY : Glass filled thermoplastic.
 Flame retardant to UL94 V-0 Color Black
 CONTACTS : Brass
 0.4um(15u") min gold over 1.25um(50u") min nickel
 SCREWLOCK : Copper alloy (no plating)
 ELECTRICAL : Voltage rating : 300 V RMS at 50 Hz
 Current rating 7.5A.
 Insulation resistance >5000 M Ohms
 Contact resistance 20 mOhms max.
 CLIMATIC : Temperature range -55 °C up to 85°C, peak at 125°C
 Damp heat 21 days(40 °C-95% HR)
 MARKING : Amphenol...(Series No.)
 Commercial reference
 Manufacturing date

PRODUCT CODE

L 77D XXX S ST X

L: RoHS Compliance

77D: Female connector

Size and number of contacts:
E09,A15,B25,C37

Contact type:
S: Female

Hood option:
1=DPPK
2=DSSK
3=DTZK
4=DVZK

Contact termination:
ST=Screw termination

UNLESS OTHERWISE SPECIFIED TOLERANCES		APPROVAL	DATE
U.S.	METRIC	DRAWN	DATE
.X +/-	0.50	Christina.cui	04/14/08
.XX +/-	0.30	CHECKED	Lik.wang
.XXX +/-	0.20	CHECKED	04/14/08
FRACTIONS +/-			
ANGLES +/-	2'		
FOR MATERIALS AND FINISHES SEE NOTES		DRAWING FILE :	
REMOVE SHARP EDGES		ANGLE OF PROJECTION	
DIMENSIONS			
U.S.	INCHES		
METRIC	MM		

Amphenol®

TITLE
machined contacts, D-ST series

SIZE	DRAWING NO.	REV.
A4	C L77DXXXSSTX	A
SCALE	NONE	SHEET 1 OF 2

This document is the property of Amphenol Corporation and is delivered on the express condition that it is not to be disclosed, reproduced or used, in whole or in part, for manufacture or sale by anyone other than Amphenol Corporation without its prior consent, & that no right is granted to disclose or to use any information in this document.

REVISIONS				
SYM	ECN	DESCRIPTION	DATE	APPROVED
1			04/14/08	

Plastic hoods



DPPK Straight cable entry



DSSK Angled cable entry

Kit connector+hood option:
(See following description)

X X ST X X

- 1=DPPK
- 2=DSSK
- 3=DTZK
- 4=DVZK

Metallic hoods



DTZK Straight cable entry



DVZK Angled cable entry

UNLESS OTHERWISE SPECIFIED		APPROVAL		DATE	Amphenol®
TOLERANCES		DRAWN	Christina.cui	04/14/08	
U.S.		CHECKED	Lik.wang	04/14/08	
METRIC		CHECKED			
.X	+/-			0.50	TITLE machined contacts, D-ST series
.XX	+/-			0.30	
.XXX	+/-			0.20	
FRACTIONS	+/-			2'	
ANGLES +/-				2'	DRAWING FILE :
FOR MATERIALS AND FINISHES					
SEE NOTES					
REMOVE SHARP EDGES					
DIMENSIONS		ANGLE OF PROJECTION			SIZE DRAWING NO. A4 C L77DXXXSSTX
U.S. INCHES		MM			
METRIC					
					REV. 1
					SCALE NONE SHEET 2 OF 2