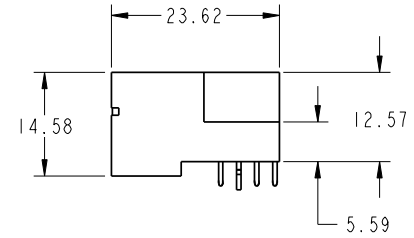
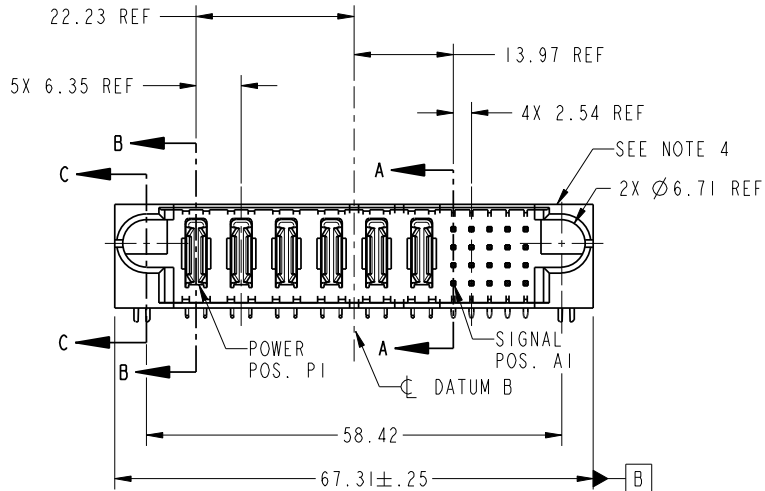
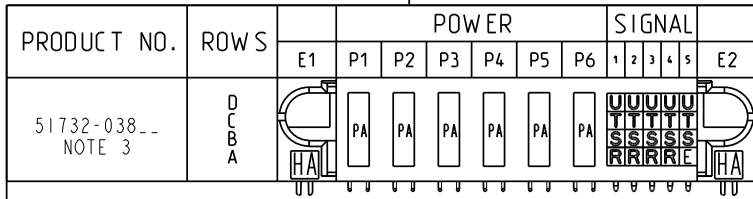


Tous droits strictement réservés. Reproduction ou communication a des tiers interdite sous quelque forme que ce soit sans autorisation écrite du propriétaire. Propriété de c FCI. Droits de reproduction FCI.



All rights strictly reserved. Reproduction or issue to third parties in any form whatever is not permitted without written authority from the proprietor. Property of FCI. Copyright FCI.



CODE	DIM "M" MATING LENGTH	CONTACT TYPE
U	[6.86]	SIGNAL
T	[6.86]	SIGNAL
S	[6.86]	SIGNAL
R	[6.86]	SIGNAL
PA	[N/A]	POWER
HA	[N/A]	HOLD-DOWN
E	[5.59]	SIGNAL

mat'l code				SEE NOTE		tolerances unless otherwise specified		CUSTOMER	
lfr	ecn no.	dr	date	linear	0.X ± 0.3	COPY		FCI	
A	DG07-0069	JUL1A	02/15/07	angles	0.XX ± 0.13	projection		www.fciconnect.com	
				dr	0.XXX ± 0.051	MM		title	
				enrg	0° ± 2°	scale		6P + 20S	
				chr	JULIA WANG 02/15/07	1:1		RIGHT ANGLE SOLDER HEADER	
				appd	RYAN YUAN 02/15/07			product family	
					BEER FU 02/15/07			PwrBlade	
					JOSEPH HSIA 02/15/07			code	
sheet index	revision	A	A	A	A			213	
	sheet	1	2	3	4			sheet	
								1 of 4	

www.fciconnect.com

title: 6P + 20S
 RIGHT ANGLE SOLDER HEADER

product family: PwrBlade

size: A
 dwg no: 51732-038

code: 213
 sheet: 1 of 4

cage code: 22526

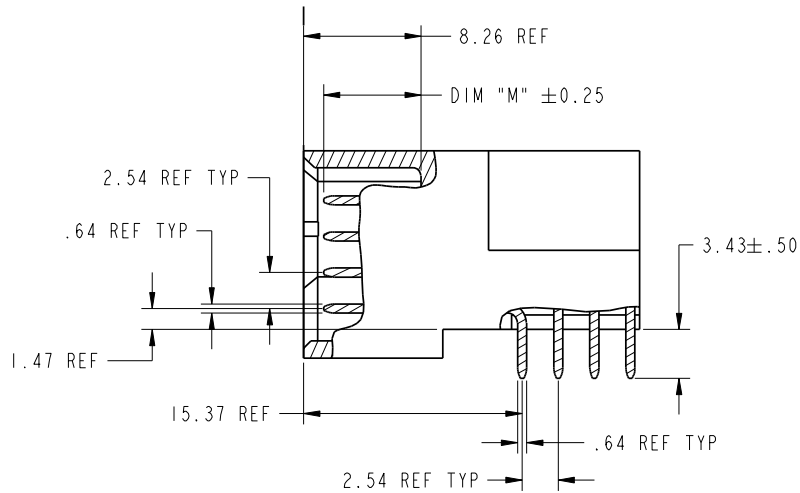
Pro/E

Tous droits strictement réservés. Reproduction ou communication a des tiers interdite sous quelque forme que ce soit sans autorisation écrite du propriétaire. Propriété de c FCI. Droits de reproduction FCI.

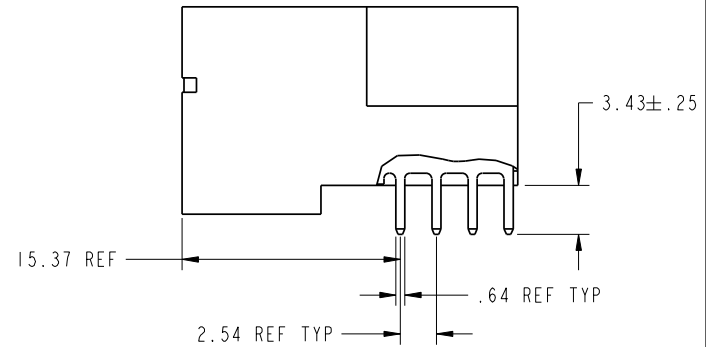


All rights strictly reserved. Reproduction or issue to third parties in any form whatever is not permitted without written authority from the proprietor. Property of FCI. Copyright FCI.

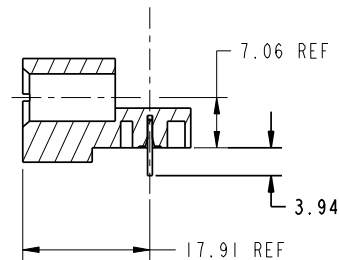
PRODUCT NUMBER
51732-038--
NOTE: 3



BROKEN-OUT SECTION A-A
SCALE 2:1



BROKEN-OUT SECTION B-B
SCALE 2:1



SECTION C-C

mat'l code				SEE NOTE	tolerances unless otherwise specified		CUSTOMER		FCI		www.fciconnect.com
lfr	ecr no.	dr	date	linear	0.X ±0.3	COPY		projection		title	
A					0.XX ±0.13					6P + 20S RIGHT ANGLE SOLDER HEADER	
				angles	0° ±2°					product family	PwrBlade
				dr	JULIA WANG 02/15/07	MM		size		dwg no	213
				enr	RYAN YUAN 02/15/07	1:1		A		51732-038	sheet
				chr	BEER FU 02/15/07						2 of 4
				appd	JOSEPH HSIA 02/15/07						
sheet index	revision sheet										

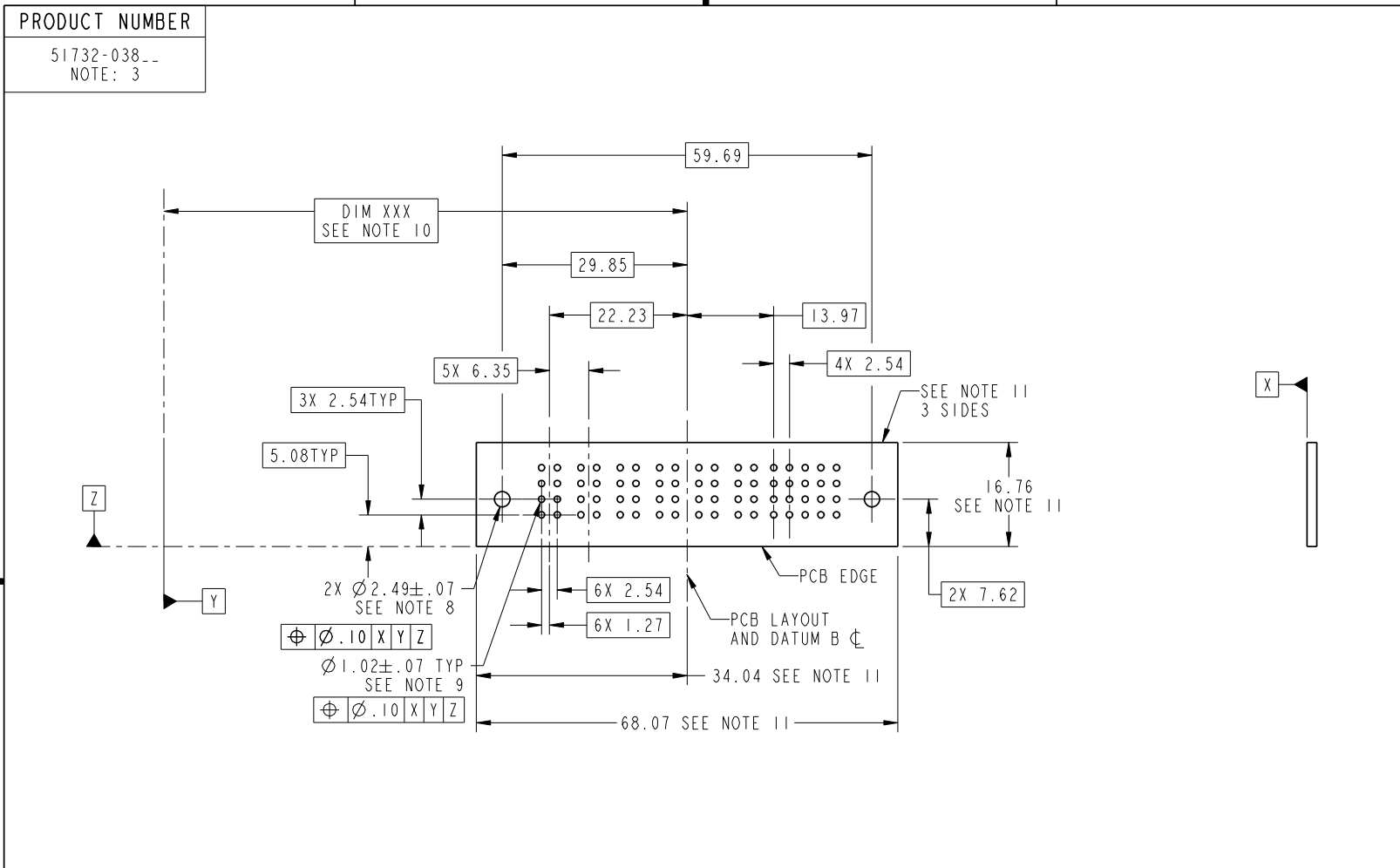
cage code 22526

Pro/E

Tous droits strictement reserves. Reproduction ou communication a des tiers interdite sous quelque forme que ce soit sans autorisation écrite du propriétaire. Propriete de c FCI. Droits de reproduction FCI.



All rights strictly reserved. Reproduction or issue to third parties in any form whatever is not permitted without written authority from the proprietor. Property of FCI. Copyright FCI.



RECOMMENDED PCB LAYOUT

mat'l code				SEE NOTE		tolerances unless otherwise specified		CUSTOMER		 www.fciconnect.com	
lfr	ecn no.	dr	date	linear	0.X ± 0.3	COPY		projection		title	
A					0.XX ± 0.13					6P + 20S RIGHT ANGLE SOLDER HEADER	
				angles	0° ± 2°					product family PwrBlade code 213	
				dr	JULIA WANG 02/15/07			MM		size	
				enrg	RYAN YUAN 02/15/07			scale 1:1		dwg no 51732-038 sheet 3 of 4	
				chr	BEER FU 02/15/07						
				appd	JOSEPH HSIA 02/15/07						
sheet index	revision	sheet									

cage code 22526

Pro/E

Tous droits strictement reserves. Reproduction ou communication a des tiers interdite sous quelque forme que ce soit sans autorisation ecrite du proprietaire. Propriete de c FCI. Droits de reproduction FCI.



All rights strictly reserved. Reproduction or issue to third parties in any form whatever is not permitted without written authority from the proprietor. Property of FCI. Copyright FCI.

PRODUCT NUMBER
51732-038--
NOTE: 3

NOTES:

1. DIMENSIONS AND TOLERANCES ARE IN ACCORDANCE WITH ASME Y14.5M, 1994 UNLESS OTHERWISE SPECIFIED.

CONNECTOR NOTES:

- 2. HOUSING MATERIAL: UL 94 V-0 GLASS FILLED HIGH-TEMP THERMOPLASTIC
POWER CONTACT MATERIAL: COPPER ALLOY
SIGNAL PIN MATERIAL: COPPER ALLOY
- 3. 51732-038;51732-038LF PLATING SPEC. SEE PRINT:100641831
- 4. MANUFACTURER'S NAME, P/N, AND DATE CODE TO APPEAR ON THIS SURFACE.
- 5. PRODUCT SPECIFICATION GS-12-149.
APPLICATION SPECIFICATION BUS-20-067.
- 6. PACKAGED IN TRAYS.

PCB NOTES:

- 7. ALL HOLE DIAMETERS ARE FINISHED HOLE SIZE.
- 8. MOUNTING HOLES, WHERE APPLICABLE, ARE UNPLATED.
- 9. $\varnothing 1.151 \pm 0.025$ DRILLED HOLES PLATED WITH 0.008 MIN SnPb OR Sn OVER 0.03 TO 0.08 Cu PLATING TO ACHIEVE $\varnothing 1.02 \pm .07$ HOLE.
- 10. "DIM XXX" TO BE DETERMINED BY THE CUSTOMER.
- 11. CONNECTOR KEEP-OUT ZONE.

mat'l code				SEE NOTE		tolerances unless otherwise specified		CUSTOMER		FCI		www.fciconnect.com	
lfr	ecn no.	dr	date	linear	0.X ± 0.3	COPY		projection		title			
A					0.XX ± 0.13					6P + 20S			
				angles	0.XXX ± 0.051					RIGHT ANGLE SOLDER HEADER			
				dr	0° ± 2°			MM		product family		PwrBlade	code
				enrg	JULIA WANG 02/15/07			scale		size		dwg no	213
				chr	RYAN YUAN 02/15/07			1:1		A		51732-038	sheet
				appd	BEER FU 02/15/07							4 of 4	
					JOSEPH HSIA 02/15/07								
sheet index	revision sheet												

A

A

B

B

1 | 2

3 |

4

1 | 2

Pro/E

3 |

cage code 22526

4