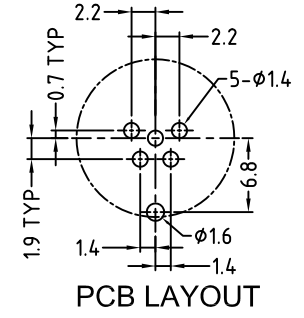
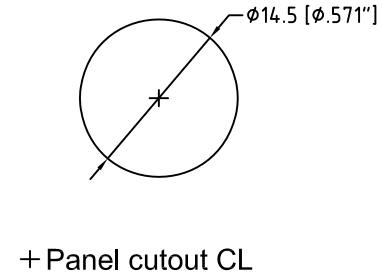
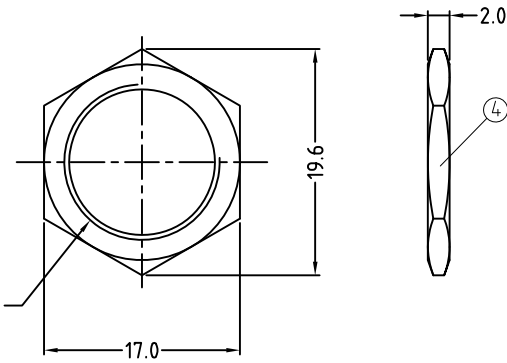
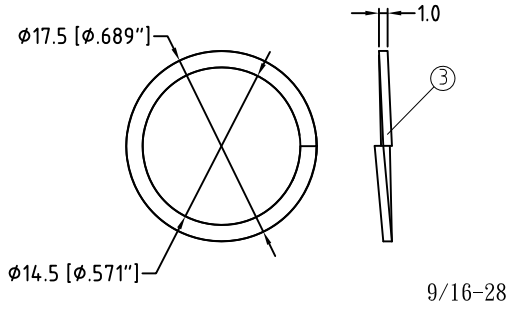
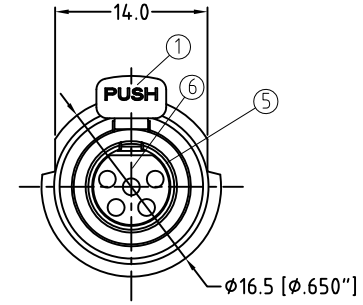
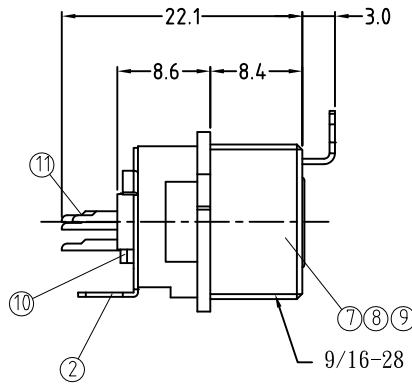


ISO VIEW



11	SOCKET CONTACTS	Brass/Au Plated	5
10	SPRING WASHER	PPS/Black	1
9	SPRING	SUS 304/Ni Plated	1
8	LATCH SPRING	SUS 304/Ni Plated	1
7	MACHINED SHELL	Brass/Ni Plated	1
6	INSULATOR	PPS/Black	1
5	MACHINED SHELL	Brass/Ni Plated	1
4	METAL NUT	Brass/Ni Plated	1
3	SPRING WASHER	SUS 304/Ni Plated	1
2	GROUND CONTACT	Brass/Ni Plated	1
1	PUSH LEVEL	Brass/Ni Plated	1
ITEM	DESCRIPTION	MATERIAL/FINISH	QTY

Specification:

Electrical:

Contact resistance: <0.03 ohm
 Insulation resistance: >500Megaohm
 Dielectric strength: 1000VDC
 Rated current: 5A

Mechanical:

Lifetime: Insert & withdraw >5000 cycle
 Insertion/withdrawal 6lb Max.

UNLESS OTHERWISE SPECIFIED TOLERANCE TO BE		THIS DOCUMENT IS THE PROPERTY OF AMPHENOL AUSTRALIA PTY. LTD. NO PART THEREOF MAY BE REPRODUCED AND USED WITHOUT THE PRIOR WRITTEN CONSENT OF THE OWNER				1	CORRECT DIMENSIONS OF THE NUT TO 17mm & 19.6mm CHANGE TO MEET RAW MATERIAL SIZES	M.H	25-07-17	9445
LINEAR	ANGULAR	CAD FILE: 55010861200111				0	FIRST ISSUE	M.H	09-10-12	----
X ± 0.50	X° ± 1°	DRN: M.H				REV.	CHANGE DETAILS	BY	DATE	CHG/No
X.X ± 0.25	X°X' ± 30'	DATE: 09-10-12				TITLE:		Amphenol		
X.XX ± 0.10	X°X'X" ± 15"	DATE: 25-07-17				MINI XLR FEMALE RECEPTACLE CUSTOMER DWG		22 Industry Boulevard, Carrum Downs, Vic 3201		
BREAK ALL SHARP EDGES AND REMOVE ALL BURRS		MATERIAL: SEE TABLE				DATE: 25-07-17		DRAWING NO. 55010861-200-1		
DO NOT SCALE		FINISH: SEE TABLE				APP'D: P.M		SHEET 1 OF 1		
DIMENSIONS IN MILLIMETRES		THIRD ANGLE PROJECTION		SCALE: 2:1 UDS		PART No: AG5FCE		SIZE: A3		55010861-200-1