

1

2

3

4

5

6

7

A

B

C

D

E

F

A

B

C

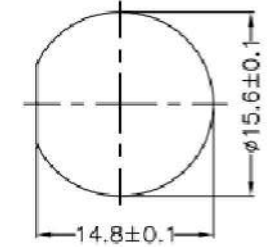
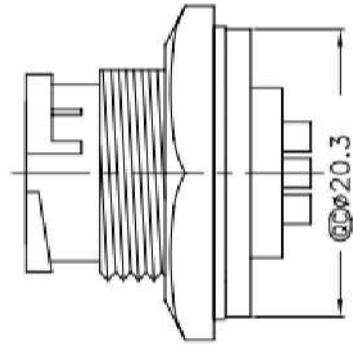
D

E

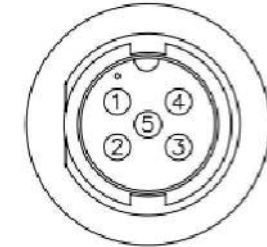
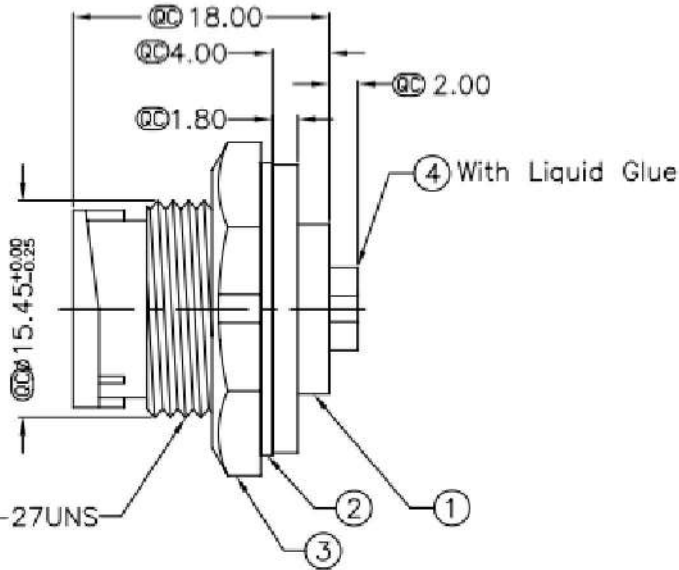
F

G

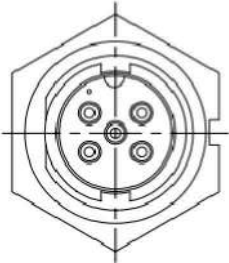
H



Recommended Panel Cut-Out



Pin Assignments
Front View



Note:

- * Ⓞ Important Dimension.
- * Waterproof Rate: IP67
- * Connector: Black, Nylon+GF
- * Pin: Copper Alloy, Gold Plated

RoHS compliant
Unit: mm

Scale	Free						Date	Name	Customer-No.
TOLERANCE						Drawn	09.06.2014	Joanna	
Unit	±XX					Approved	09.06.2014	Joanna	ASSMANN WSW-No.
.X	±0.25								A-CR-05PMMS-LC-WP
.XX	±0.1								Drawing-No.
.XXX	±0.05								ASS 6370 CO
DIM	Tol								rev00
		Ⓞ	Drawn	09.06.2014	Joanna			Replace	Sheet
Angle	±1°	Id.	Modification	Date	Name				

1

2

3

4

5

6

7