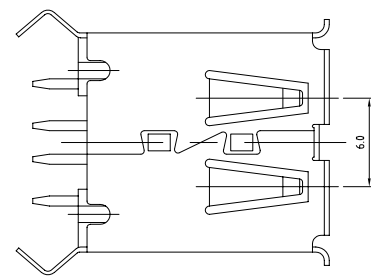
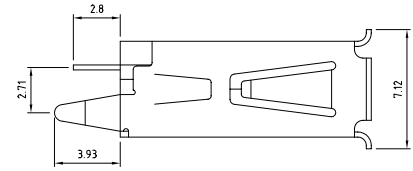
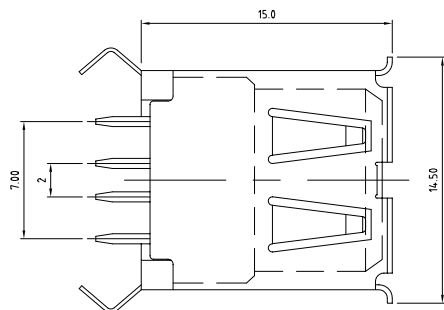


used for:



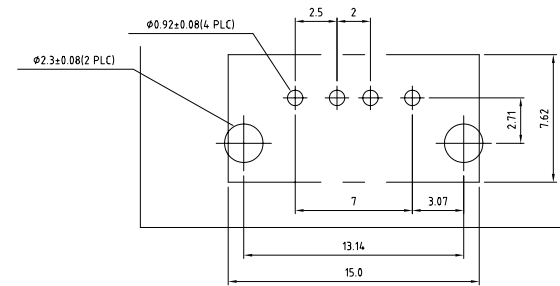
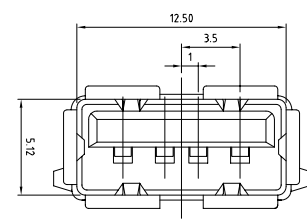
### SPECIFICATIONS

#### Materials

Insulator: Thermoplastic, Glass Filled, UL94V-0 Rated  
 Contact: Copper Alloy, 30u" Gold Plated  
 Shell: Copper Alloy, Nickel Plated

#### Electrical

Insulation Resistance: 1000 Megohms Minimum  
 Contact Resistance: 30 Milliohms Maximum Initial  
 Dielectric Withstanding Voltage: 500V AC for one minute  
 Current: 1.0 Ampere Maximum Per Contact At 30°C T-Rise  
 Voltage: 30V AC (rms)  
 Temperature: -55°C ~ 85°C



Directive 2002/95/EC  
 „RoHS“  
 Compliant

THIS DRAWING MAY NOT BE COPIED OR REPRODUCED IN ANY WAY, AND MAY NOT BE PASSED ON TO A THIRD PARTY WITHOUT WRITTEN PERMISSION. OWNERSHIP AND COPYRIGHT OF CONEC CORPORATION DO NOT ALTER CAD DRAWING BY HAND

tolerance		finish	
unless otherwise specified tolerance shall be as follows			
Decimal:	.xx .xxx	2006	date
		April 17	name
		April 17	Kathy Skelhorn
		norm	
		d-old	
a	origin	<b>CONEC</b> <sup>®</sup>	
rev.	description		
date	name		

scale:		material:	
SEE SPECIFICATIONS		SEE SPECIFICATIONS	
title:			
USB 2.0 connector A type PCB			
Thru-Hole 4pin female			
RoHS compliant			
drawing no.:		AutoCAD 2005	DIN A3
		39K1A238	sheet 1/1
part no.:		33UBAD-04SW12R	