

Ceramic Low Pass Filter

LFCG-1575+

50Ω DC to 1575 MHz



Generic photo used for illustration purposes only
CASE STYLE: GE0805C-2

The Big Deal

- Very good rejection, 50 dB typical
- Rugged, ceramic construction
- Tiny size, 0.079" x 0.049" x 0.037" (0805)
- Excellent power handling, 5.5W

Product Overview

Mini-Circuits' LFCG-1575+ is an LTCC low pass filter with a passband from DC to 1575 MHz, supporting a variety of applications. This model provides 0.9 dB typical passband insertion loss and provides a very good stopband rejection due to strategically constructed layout with minimal interaction between components. It handles up to 5.5W RF input power and provides a wide operating temperature range from -55°C. to 125°C. Housed in a tiny 0805 ceramic form factor with wraparound terminations, the filter is ideal for dense PCB layouts and with minimal performance variation due to parasitics.

Key Features

| Feature | Advantages |
|---|---|
| Very good stopband rejection, 50 dB typical | The LTCC lowpass filter provides a very good stopband rejection until 12 GHz suitable for high end applications. |
| LTCC Construction | Provides repeatable performance in a rugged, ceramic package well suited for tough environments such as high humidity and temperature extremes. |
| Tiny size (0.079" x 0.049" x 0.037") | Saves space in dense circuit board layouts and minimizes the effects of parasitics. |
| Excellent power handling, 5.5W | Supports a wide range of system power requirements. |
| Wrap-around terminations | Provides excellent solderability and easy visual inspection |

Notes

- A. Performance and quality attributes and conditions not expressly stated in this specification document are intended to be excluded and do not form a part of this specification document.
B. Electrical specifications and performance data contained in this specification document are based on Mini-Circuit's applicable established test performance criteria and measurement instructions.
C. The parts covered by this specification document are subject to Mini-Circuits standard limited warranty and terms and conditions (collectively, "Standard Terms"); Purchasers of this part are entitled to the rights and benefits contained therein. For a full statement of the Standard Terms and the exclusive rights and remedies thereunder, please visit Mini-Circuits' website at www.minicircuits.com/MCLStore/terms.jsp



Ceramic Low Pass Filter

50Ω DC to 1575 MHz

LFCG-1575+



Generic photo used for illustration purposes only

CASE STYLE: GE0805C-2

+RoHS Compliant

The +Suffix identifies RoHS Compliance. See our web site for RoHS Compliance methodologies and qualifications

Features

- Low loss, 0.9 dB typical
- High rejection 50 dB typical
- Excellent power handling, 5.5W
- Extremely small size 0805 (2.0mm x 1.25mm)
- Temperature stable
- LTCC construction

Applications

- Harmonic Rejection
- VHF/UHF transmitters / receivers
- Lab use

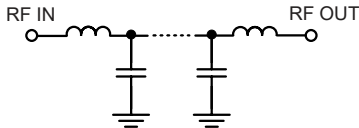
Electrical Specifications^{1,2} at 25°C

| Parameter | F# | Frequency (MHz) | Min. | Typ. | Max. | Unit | |
|-----------|----------------|-----------------|------------|------|------|------|----|
| Pass Band | Insertion Loss | DC-F1 | DC-1575 | — | 0.9 | 1.8 | dB |
| | Freq. Cut-Off | F2 | 1850 | — | 3.0 | — | dB |
| | Return Loss | DC-F1 | DC-1575 | — | 18 | — | dB |
| Stop Band | Rejection Loss | F3-F4 | 2175-2400 | 20 | 30 | — | dB |
| | | F4-F5 | 2400-7000 | 40 | 50 | — | dB |
| | | F5-F6 | 7000-12000 | — | 35 | — | dB |

¹ DC de-coupling capacitors are required in Applications where DC voltage and/or current is present at either input or output ports. Please contact Mini-Circuits for alternatives if DC pass from IN-OUT is required.

² Measured on Mini-Circuits Characterization Test Board TB-799+

Functional Schematic



Maximum Ratings

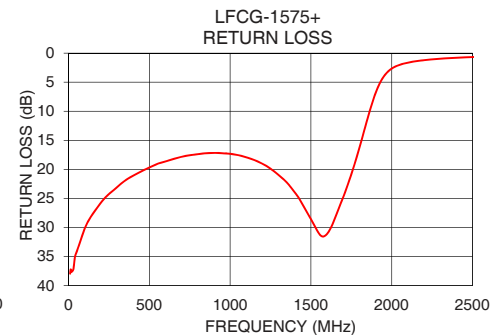
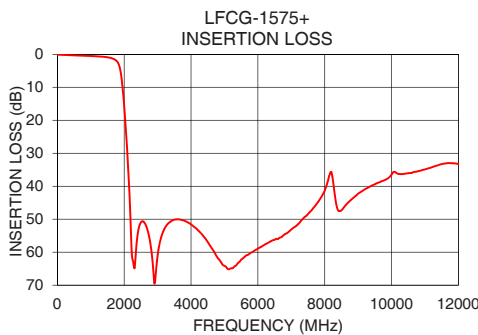
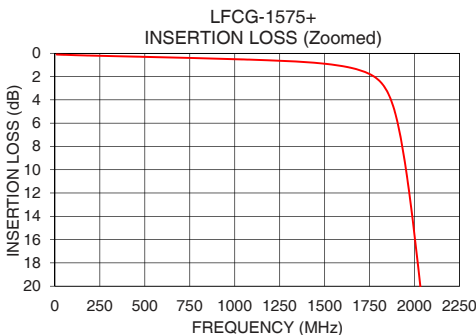
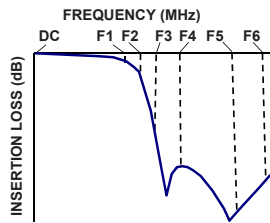
| | |
|-----------------------|-----------------|
| Operating Temperature | -55°C to 125°C |
| Storage Temperature | -55°C to 125°C |
| RF Power Input* | 5.5W max. @25°C |

*Passband rating, derate linearly to 1W at 125°C ambient
Permanent damage may occur if any of these limits are exceeded.

Typical Performance Data at 25°C

| Frequency (MHz) | Insertion Loss (dB) | Return Loss (dB) |
|-----------------|---------------------|------------------|
| 10 | 0.10 | 37.94 |
| 100 | 0.15 | 30.21 |
| 1000 | 0.51 | 17.32 |
| 1575 | 1.05 | 31.56 |
| 1850 | 3.35 | 11.30 |
| 1960 | 10.84 | 3.68 |
| 2035 | 20.48 | 2.15 |
| 2100 | 30.72 | 1.63 |
| 2175 | 46.14 | 1.29 |
| 2400 | 54.89 | 0.79 |
| 3000 | 61.07 | 0.39 |
| 4000 | 51.56 | 0.21 |
| 5000 | 64.15 | 0.12 |
| 6000 | 58.92 | 0.11 |
| 7000 | 53.15 | 0.18 |
| 8000 | 41.32 | 0.30 |
| 9000 | 42.26 | 0.32 |
| 10000 | 36.44 | 0.58 |
| 11000 | 34.91 | 0.23 |
| 12000 | 33.27 | 0.23 |

Typical Frequency Response



Notes

- Performance and quality attributes and conditions not expressly stated in this specification document are intended to be excluded and do not form a part of this specification document.
- Electrical specifications and performance data contained in this specification document are based on Mini-Circuit's applicable established test performance criteria and measurement instructions.
- The parts covered by this specification document are subject to Mini-Circuits standard limited warranty and terms and conditions (collectively, "Standard Terms"); Purchasers of this part are entitled to the rights and benefits contained therein. For a full statement of the Standard Terms and the exclusive rights and remedies thereunder, please visit Mini-Circuits' website at www.minicircuits.com/MCLStore/terms.jsp



www.minicircuits.com P.O. Box 350166, Brooklyn, NY 11235-0003 (718) 934-4500 sales@minicircuits.com

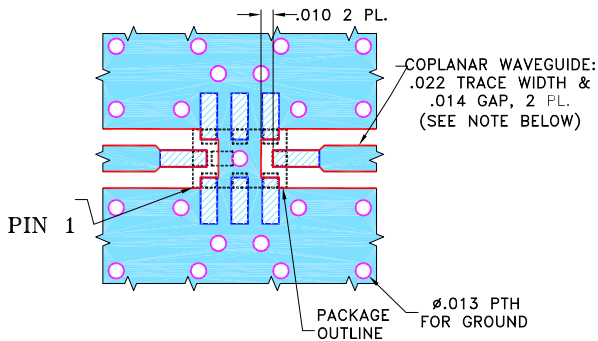
REV. B
ECO-007606
LFCG-1575+
EDU2884
URJ
210428
Page 2 of 3

Pad Connections

| | |
|--------|-------------|
| INPUT | 8 |
| OUTPUT | 4 |
| GROUND | 1,2,3,5,6,7 |

Product Marking: KD

Demo Board MCL P/N: TB-799+
Suggested PCB Layout (PL-429)

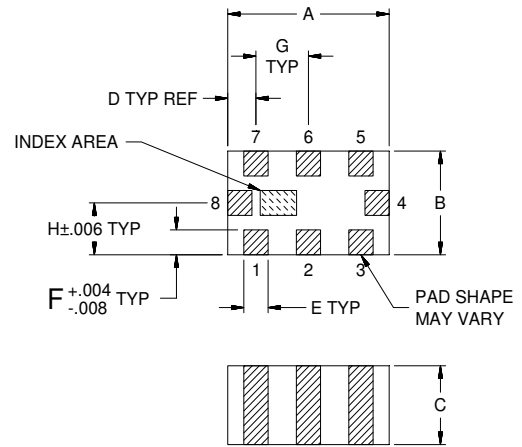


NOTES:

1. COPLANAR WAVEGUIDE IS SHOWN FOR ROGERS R04350B WITH DIELECTRIC THICKNESS $.010" \pm .001"$. COPPER: 1/2 OZ. EACH SIDE. FOR OTHER MATERIALS TRACE WIDTH AND GAP MAY NEED TO BE MODIFIED.
2. BOTTOM SIDE OF THE PCB IS CONTINUOUS GROUND PLANE.

- DENOTES PCB COPPER LAYOUT WITH SMOBC (SOLDER MASK OVER BARE COPPER).
- DENOTES COPPER LAND PATTERN FREE OF SOLDER MASK.

Outline Drawing



Outline Dimensions (inch / mm)

| A | B | C | D | E | F | G | Wt. |
|------|------|------|------|------|------|------|-------|
| .079 | .049 | .037 | .014 | .012 | .012 | .026 | grams |
| 2.00 | 1.25 | 0.95 | 0.35 | 0.30 | 0.30 | 0.65 | .008 |

Note: Please refer to case style drawing for details

Notes

- A. Performance and quality attributes and conditions not expressly stated in this specification document are intended to be excluded and do not form a part of this specification document.
 B. Electrical specifications and performance data contained in this specification document are based on Mini-Circuit's applicable established test performance criteria and measurement instructions.
 C. The parts covered by this specification document are subject to Mini-Circuits standard limited warranty and terms and conditions (collectively, "Standard Terms"); Purchasers of this part are entitled to the rights and benefits contained therein. For a full statement of the Standard Terms and the exclusive rights and remedies thereunder, please visit Mini-Circuits' website at www.minicircuits.com/MCLStore/terms.jsp