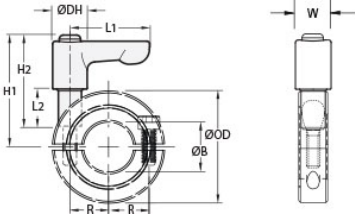




LV-MSP-16-A

Ruland LV-MSP-16-A, 16mm Two-Piece Shaft Collar with Clamping Lever, Aluminum Collar with Zinc Plated Lever, 34mm OD, 13mm Width



Description

Ruland LV-MSP-16-A is a two-piece quick clamping shaft collar with clamping lever with a 16mm bore, 34mm OD, and 13mm width. It is made from MSP-16-A and LF30-CL-M5:15-ZS. The clamp style design does not mar the shaft, is easy to remove, and is indefinitely adjustable. Two-piece shaft collars can be assembled in-lace without the need to remove other components. Ruland mates halves throughout the manufacturing process for proper fit, alignment, and holding power. The threaded stud on the lever is used in place of standard collar hardware. When combined, the two parts create a shaft collar that requires no tools to install, remove, or reposition and is ideally suited for packaging, printing, and other applications where frequent setup changes and adjustments are needed. Once the lever is installed in the shaft collar, users simply turn the lever until they meet their desired torque. The adjustable lever can be reposition by the user without the loss of holding power by lifting the handle and twisting it 40° to lock it in a new position. This allows for use in space constrained environments where 360° rotation is not possible to fully seat the lever. MSP-16-A is made from high-strength 2024 aluminum. LF30-CL-M5:15-ZS has a zinc plated steel handle and stainless steel threaded stud. This material combination allows for a lightweight durable quick clamping and release component that is suitable for most industrial applications. The lever is black to seamlessly integrate with the aesthetics of most equipment. MSP-16-A is manufactured by Ruland and LF30-CL-M5:15-ZS is manufactured by Otto Ganter. LV-MSP-16-A is RoHS3 and REACH compliant.

Product Specifications

| | | | |
|----------------------------------|--|------------------------------------|--------------------------|
| Bore (B) | 16 mm | Bore Tolerance | +0.050 mm / +0.012 mm |
| Outer Diameter (OD) | 34 mm | Center to Lever Top H1 | 35.2 mm |
| Width (W) | 13 mm | Width Tolerance | +0.076 mm / -0.254 mm |
| Lever Length L1 | 30 mm | Lever Height H2 | 35 mm |
| Hub Diameter DH | 13 mm | Sleeve Length L2 | 15 mm |
| Recommended Gap | 1.59 mm | Recommended Shaft Tolerance | +0.000 mm / -0.013 mm |
| Thread TH | M5 | Hex Wrench Size | 4.0 mm |
| Seating Torque | 9.5 Nm | Screw Location (R) | 12.50 mm |
| Number of Screws | 2 ea | Collar Part Number | MSP-16-A |
| Lever Part Number | LF30-CL-M5:15-ZS | Collar Material | Aluminum |
| Collar Finish | Bright | Handle Color | Black |
| Handle Material | Zinc | Handle Finish | Powder Coated |
| Insert and Screw Material | 303 Stainless Steel | Manufacturer | Ruland Manufacturing |
| Country of Origin | Shaft Collar - USA Lever - Germany | Weight (lbs) | 0.149200 |
| UPC | 634529249253 | Tariff Code | 8483.60.8000 |
| UNSPC | 31162811 | | |
| Note 1 | Performance ratings are for guidance only. The user must determine suitability for a particular application. | | |
| Prop 65 | <p>⚠️ WARNING This product can expose you to the chemical Soots, Benzene, Lead, Nickel (metallic), and Ethylene Thiourea, known to the State of California to cause cancer and birth defects or other reproductive harm. For more information go to www.P65Warnings.ca.gov.</p> | | |