



CX2040LNL

- o TRANSFORMER, RF, 1:1
- o 1.5–500 MHz
- o IMPEDANCE = 75 OHMS
- o SURFACE MOUNT, FR4 SUBSTRATE

ELECTRICAL SPECIFICATIONS @ 25°C:

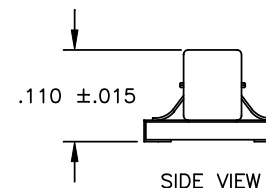
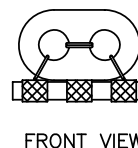
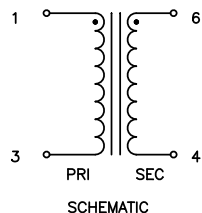
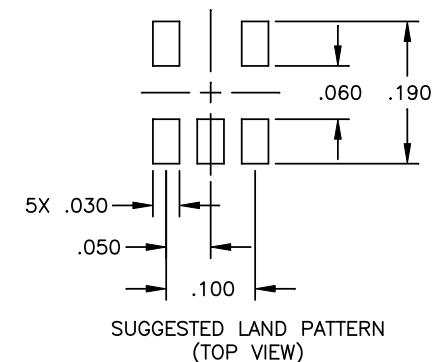
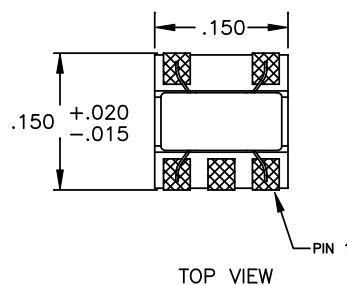
| IMPEDANCE RATIO | TURNS RATIO (Pri:Sec) | BANDWIDTH | | | INSERTION LOSS @ MIDBAND |
|-----------------|-----------------------|-------------|-------------|-----------|--------------------------|
| | | 3.0 dB | 2.0 dB | 1.0 dB | |
| 1:1 | 1:1 | .15–500 MHz | 2.5–400 MHz | 5–350 MHz | 0.90 dB (TYP) |
| | | | | | |

NOTES: UNLESS OTHERWISE SPECIFIED:

1. OPERATING TEMPERATURE: -40°C TO +85°C
2. STORAGE TEMPERATURE: -20°C TO +125°C
3. JEDEC MOISTURE SENSITIVITY LEVEL 1
4. DIMENSIONS ARE IN INCHES WITH THE FOLLOWING TOLERANCE:
 .XX= ±.02
 .XXX= ±.010
5. OPTIONAL TAPE & REEL PACKAGING CAN BE ORDERED BY ADDING A "T" SUFFIX TO THE PART NUMBER. ie: CX2040LNLT
6. ROHS COMPLIANT



MECHANICAL SPECIFICATIONS:



© Copyright, 2012. Pulse Engineering, Inc. All rights reserved. Drawing specifications subject to change without notice. Date (07/06/12)

PULSE CONFIDENTIAL
&
PROPRIETARY

PRODUCT SPECIFICATION:
TRANSFORMER, BALUN, 1:1, 1.5–500MHz, SM

| | | |
|--------------------|--------|------|
| DWG. NO./ PART NO. | SHEET: | REV. |
| CX2040LNL | 1 | M10 |