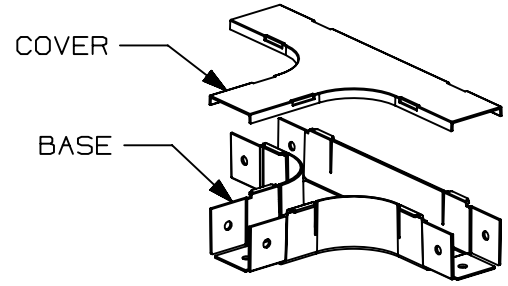
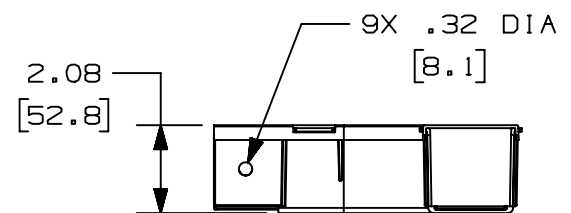
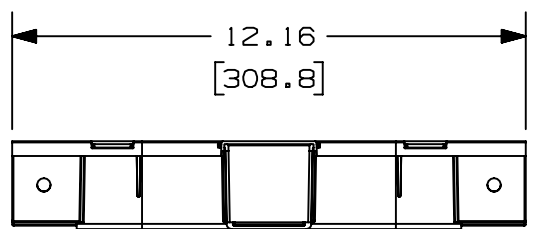
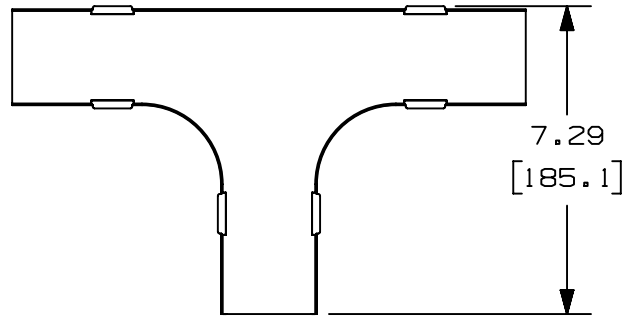


THIS COPY IS PROVIDED ON A RESTRICTED BASIS AND IS NOT TO BE USED IN ANY WAY DETRIMENTAL TO THE INTERESTS OF PANDUIT CORP.

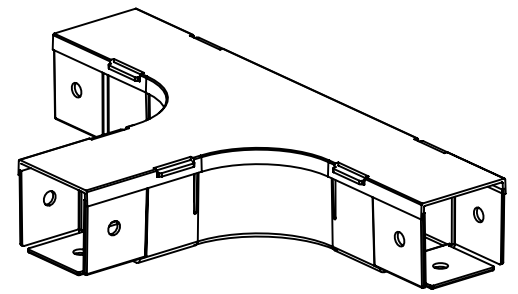


NOTES:

1. SEE CURRENT CATALOG FOR ADDITIONAL PART SUFFIXES TO INDICATE COLOR AND/OR PACKAGE QUANTITY.
2. THE FIBER-DUCT 2x2 AND FIBERRUNNER 2x2 HORIZONTAL TEE FITTING IS DESIGNED WITH A MINIMUM 2" (50.8) BEND RADIUS TO PROTECT FIBER OPTIC CABLES.
3. PARTS SUPPLIED:
 (1) - COVER
 (1) - BASE
4. DIMENSIONS IN PARENTHESES ARE IN METRIC.



PANDUIT PART NUMBER	WEIGHT	MATERIAL
FT2X2**	0.45 LB/EACH (206g/EACH)	ABS
FT2X2L**	0.45 LB/EACH (206g/EACH)	PC/ABS



REV	DATE	BY	CHK	APR	DESCRIPTION	ECN
05B	8/27/20	MEX-JAGC	DWR	DWR	ADDED PART NUMBER	V09002DZ/11
5	05-03-13	JBN	RTFI	RN	J. UPDATED DRAWING BORDER & TITLE BLOCK	35245-35

TITLE FIBER-DUCT 2X2 AND FIBERRUNNER 2X2 HORIZONTAL TEE FITTING - (FT2X2**, FT2X2L**)				CUSTOMER DRAWING	
ITEM REVISION NAME D35245CI/04				PANDUIT	
DATASET FILE NAME D35245CI_DC/04C					
MATERIAL: SEE PART NUMBER TABLE ABOVE				DRAWING NUMBER: 35245-35	
THIRD ANGLE PROJECTION					
DRAWN BY JBA	DATE 06-17-97	CHK HIW	SCALE NONE	SHT 1 OF 1	SIZE A