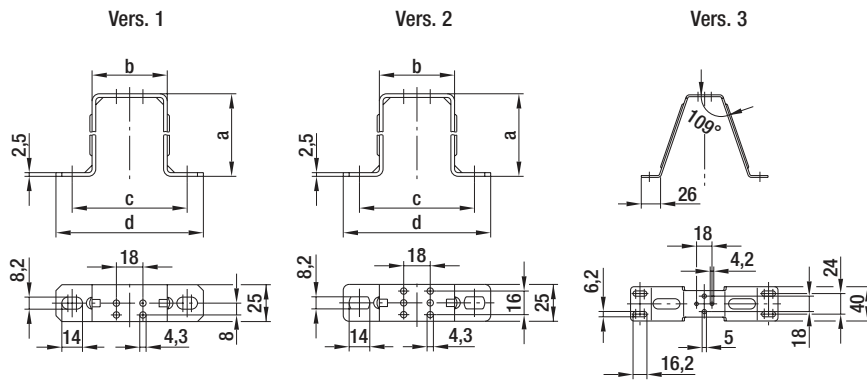


Accessories



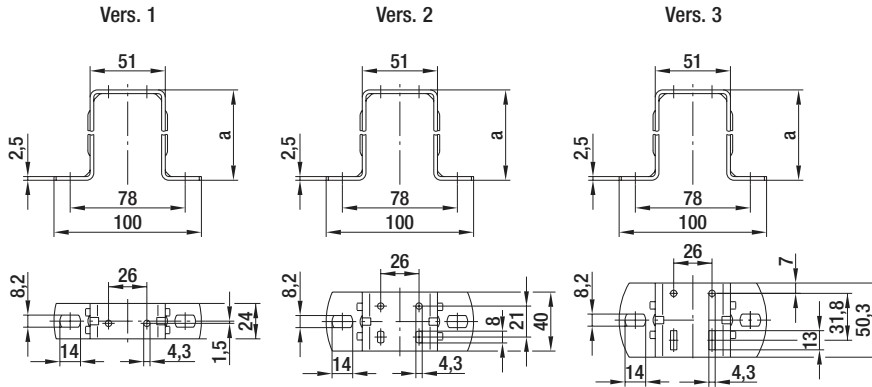
- **Material:** galvanised steel wire, chromatised in blue

ebm-papst • Mulfingen

Mounting brackets for Q-motors (foot measure 18 mm)

Part no.	Size	Vers.	a	b	c	d	Matching Q-motor
51025-2-4053	172	1	56,0	51	78	100	M4Q 045 -BD01-**
51028-2-4053	200	1	67,0	51	78	100	M4Q 045 -BD01-**, M4Q 045 -CA01-**
51026-2-4053	230	1	74,5	51	78	100	M4Q 045 -CA01-**, M4Q 045 -CA03-**
51027-2-4053	254	2	85,5	51	78	100	M4Q 045 -CA03-**, M4Q 045 -CF01-**, M4Q 045 -DA01-**
51014-2-4053	300	3	112,0	---	150	172	M4Q 045 -DA01-**, M4Q 045 -DA05-**, M4Q 045 -EA01-**, M4Q 045 -EF01-**

subject to alterations



- **Material:** galvanised steel wire, chromatised in blue

ebm-papst • Mulfingen

Mounting brackets for Q-motors (foot measure 26 mm)

Part no.	Size	Vers.	a	Matching Q-motor
71881-2-4053	154	1	39	M4Q 045 -BD01-**
71882-2-4053	172	1	52	M4Q 045 -BD01-**
71883-2-4053	200 ⁽¹⁾ , 230 ⁽²⁾	1	72	M4Q 045 -BD01-**(1), M4Q 045 -CA01-**(1)(2), M4Q 045 -CA03-**(2)
71884-2-4053	254	1	84	M4Q 045 -CA03-**, M4Q 045 -CF01-**
71885-2-4053	254	2	84	M4Q 045 -DA01-**
71886-2-4053	300	2	109	M4Q 045 -DA01-**, M4Q 045 -DA05-**
71887-2-4053	300	3	109	M4Q 045 -EA01-**, M4Q 045 -EF01-**

subject to alterations

⁽¹⁾ size 200 fits M4Q045-BD01-** and M4Q045-CA01-**

⁽²⁾ size 230 fits M4Q045-CA01-** and M4Q045-CA03-**