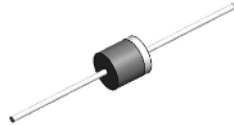


# 12KPE

## Automotive grade 12000 W Transient voltage suppressor



### Product features

- Automotive grade (AEC-Q101 qualified)
- Excellent clamping capability
- High reliability application
- 12000 W peak pulse power capability at 10/1000  $\mu$ s waveform
- Typical  $I_R$  less than 5  $\mu$ A above 22 V
- Fast response time: typically less than 1.0 ps from 0 V to  $V_{BR}$  minimum
- Plastic package meets UL 94 V-0 flammability rating
- Terminal: tin plated, solderable per J-STD-002
- UL 497B recognized.  
File No. : E198449 Guide QVQG2

### Applications

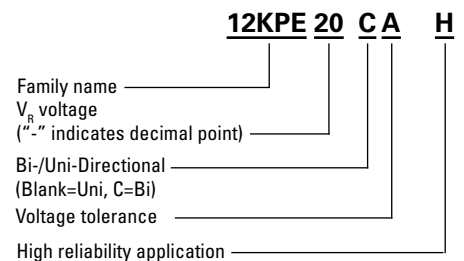
- Automotive chassis and safety systems
- Advanced driver assistance systems (ADAS)
- Communication and infotainment systems
- Network systems and body electronics
- Power Train controls
- xEV and battery systems

### Environmental compliance and general specifications

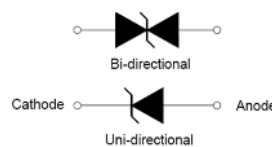
- ISO16750-2 P5A: 12 V system (87 V/0.5  $\Omega$ /400 ms)
- ISO16750-2 P5A: 24 V system (174 V/2  $\Omega$ /350 ms)
- AEC-Q101 qualified



### Ordering part number



### PIN configuration



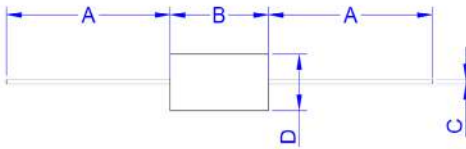
### Absolute maximum ratings

(+25 °C, RH=45%-75%, unless otherwise noted)

Parameter	Symbol	Value	Unit
Storage operating junction temperature range	$T_{STG}/T_J$	-55 to +175	°C
Steady state power dissipation at $T_L = +75$ °C	$P_{M(AV)}$	8	W
Peak pulse power dissipation on 10/1000 $\mu$ s waveform	$P_{PP}$	12000	W
Maximum instantaneous forward voltage at 100 A for unidirectional	$V_F$	5	V
Peak forward surge current, 8.3 ms single half sine wave <sup>1</sup>	$I_{FSM}$	600	A
Typical thermal resistance junction to lead	$R_{\theta JL}$	8.0	°C/W
Typical thermal resistance junction to ambient	$R_{\theta JA}$	40	°C/W

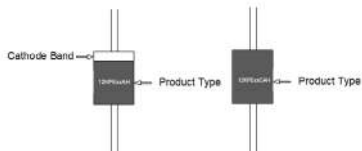
1. Measured on 8.3 ms single half sine wave or equivalent square wave for unidirectional device only, duty cycle = 4 per minute maximum

### Mechanical parameters, pad layout- mm/inches



Dimension	Millimeters		Inches	
	Minimum	Maximum	Minimum	Maximum
A	25.40	-	1.000	-
B	8.60	9.40	0.339	0.370
C	1.20	1.40	0.047	0.055
D	8.60	9.10	0.339	0.358

### Part marking



### Packaging information

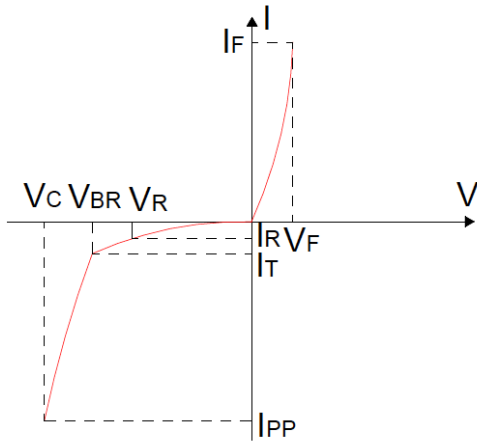
300 parts per box

**Electrical specifications** (+25 °C)

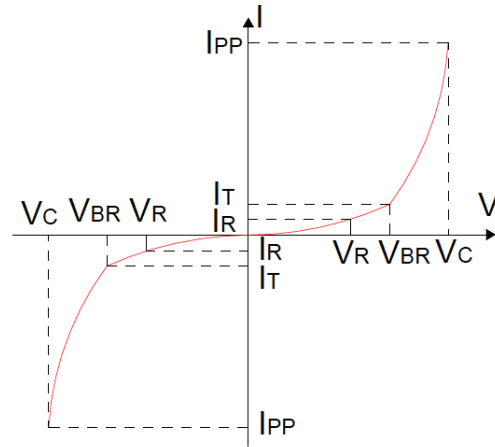
Part number		Marking		$V_R$	$I_R @ V_R$	$V_{BR} @ I_T$		$I_T$	$V_C @ I_{PP}$	$I_{PP}$	UL497B Recognized
Uni-polar	Bi-polar	Uni	Bi	(V)	( $\mu$ A)	min (V)	max (V)	(mA)	max (V)	(A)	
12KPE20AH	12KPE20CAH	12KPE20AH	12KPE20CAH	20	15	22.2	24.5	5	34.3	349.9	x
12KPE22AH	12KPE22CAH	12KPE22AH	12KPE22CAH	22	10	24.4	26.9	5	37.1	323.5	x
12KPE24AH	12KPE24CAH	12KPE24AH	12KPE24CAH	24	5	26.7	29.5	5	40.7	294.9	x
12KPE26AH	12KPE26CAH	12KPE26AH	12KPE26CAH	26	5	28.9	31.9	5	44	272.8	x
12KPE28AH	12KPE28CAH	12KPE28AH	12KPE28CAH	28	5	31.1	34.4	5	47.5	252.7	x
12KPE30AH	12KPE30CAH	12KPE30AH	12KPE30CAH	30	5	33.3	36.8	5	50.7	236.7	x
12KPE33AH	12KPE33CAH	12KPE33AH	12KPE33CAH	33	5	36.7	40.6	5	54.7	219.4	x
12KPE36AH	12KPE36CAH	12KPE36AH	12KPE36CAH	36	5	40	44.2	5	59.8	200.7	x
12KPE40AH	12KPE40CAH	12KPE40AH	12KPE40CAH	40	5	44.4	49.1	5	65.8	182.4	x
12KPE43AH	12KPE43CAH	12KPE43AH	12KPE43CAH	43	5	47.8	52.8	5	69.8	171.9	x
12KPE48AH	12KPE48CAH	12KPE48AH	12KPE48CAH	48	5	53.6	58.7	5	77.7	154.5	
12KPE58AH	12KPE58CAH	12KPE58AH	12KPE58CAH	58	5	64.4	71.2	5	93.6	128.2	
12KPE64AH	12KPE64CAH	12KPE64AH	12KPE64CAH	64	5	71.1	78.6	5	103	116.5	
12KPE72AH	12KPE72CAH	12KPE72AH	12KPE72CAH	72	5	80	88.5	5	116	103.4	

**Ratings and V-I characteristic curves** (+25 °C unless otherwise noted)

**V- I curve characteristics (Uni-directional)**



**V- I curve characteristics (Bi-directional)**



Surge waveform: 10/1000  $\mu$ s

$V_R$ : Stand-off voltage – Maximum voltage that can be applied

$V_{BR}$ : Breakdown voltage

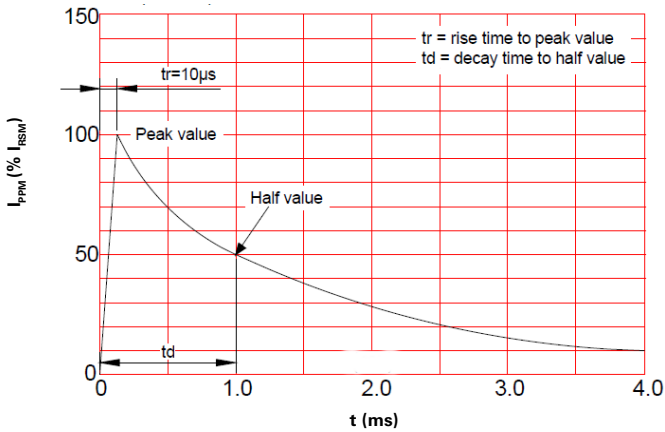
$V_C$ : Clamping voltage – Peak voltage measured across the suppressor at a specified  $I_{PP}$

$I_R$ : Reverse leakage current

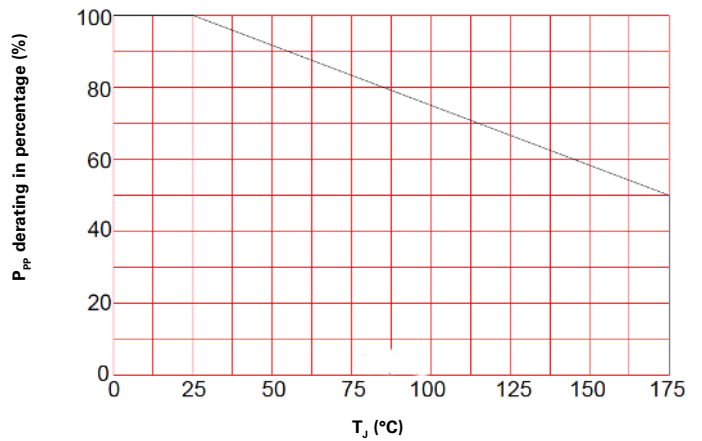
$I_T$ : Test current

$V_F$ : Forward voltage drop for Uni-directional

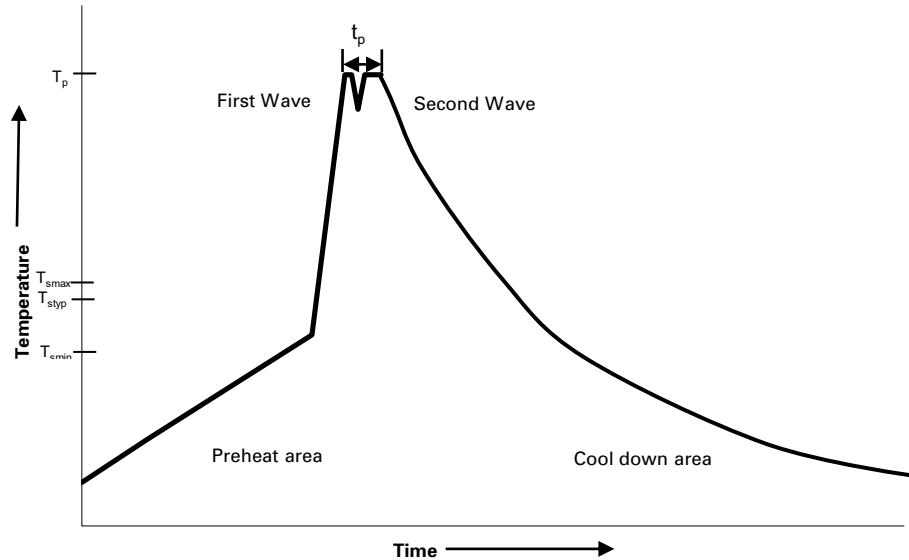
**Pulse waveform**



**Pulse derating curve**



**Wave solder profile**



**Reference EN 61760-1:2006**

Profile feature	Standard SnPb solder	Lead (Pb) free solder
Preheat		
• Temperature min. ( $T_{smin}$ )	100 °C	100 °C
• Temperature typ. ( $T_{styp}$ )	120 °C	120 °C
• Temperature max. ( $T_{smax}$ )	130 °C	130 °C
• Time ( $T_{smin}$ to $T_{smax}$ ) ( $t_s$ )	70 seconds	70 seconds
$\Delta$ preheat to max Temperature	150 °C max.	150 °C max.
Peak temperature ( $T_p$ )*	235 °C – 260 °C	250 °C – 260 °C
Time at peak temperature ( $t_p$ )	10 seconds max 5 seconds max each wave	10 seconds max 5 seconds max each wave
Ramp-down rate	~ 2 K/s min ~3.5 K/s typ ~5 K/s max	~ 2 K/s min ~3.5 K/s typ ~5 K/s max
Time 25 °C to 25 °C	4 minutes	4 minutes

**Manual solder**

+350 °C (4-5 seconds by soldering iron), generally manual/hand soldering is not recommended

Life Support Policy: Eaton does not authorize the use of any of its products for use in life support devices or systems without the express written approval of an officer of the Company. Life support systems are devices which support or sustain life, and whose failure to perform, when properly used in accordance with instructions for use provided in the labeling, can be reasonably expected to result in significant injury to the user.

Eaton reserves the right, without notice, to change design or construction of any products and to discontinue or limit distribution of any products. Eaton also reserves the right to change or update, without notice, any technical information contained in this bulletin.

**Eaton**  
**Electronics Division**  
1000 Eaton Boulevard  
Cleveland, OH 44122  
United States  
Eaton.com/electronics

© 2021 Eaton  
All Rights Reserved  
Printed in USA  
Publication No. ELX1058 BU-ELX21058  
June 2021

Eaton is a registered trademark.

All other trademarks are property of their respective owners.

Follow us on social media to get the latest product and support information.

