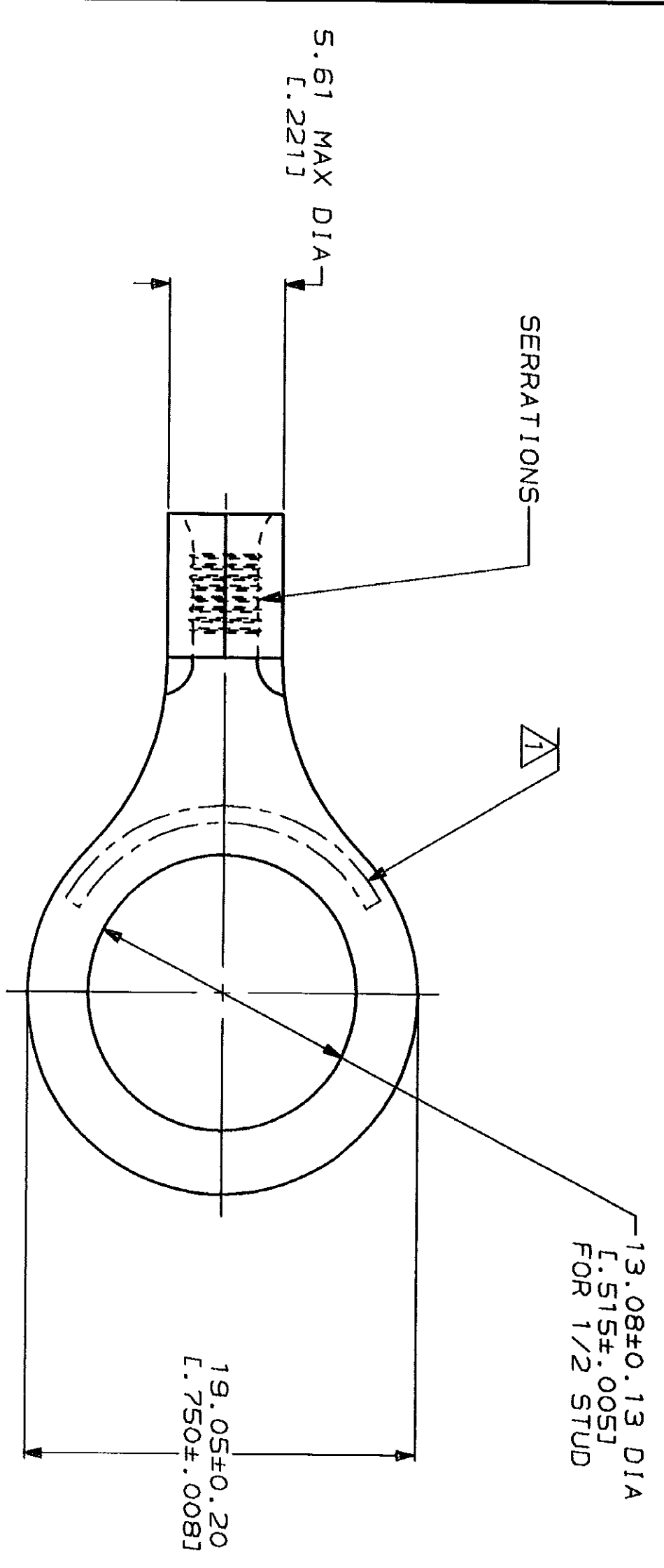


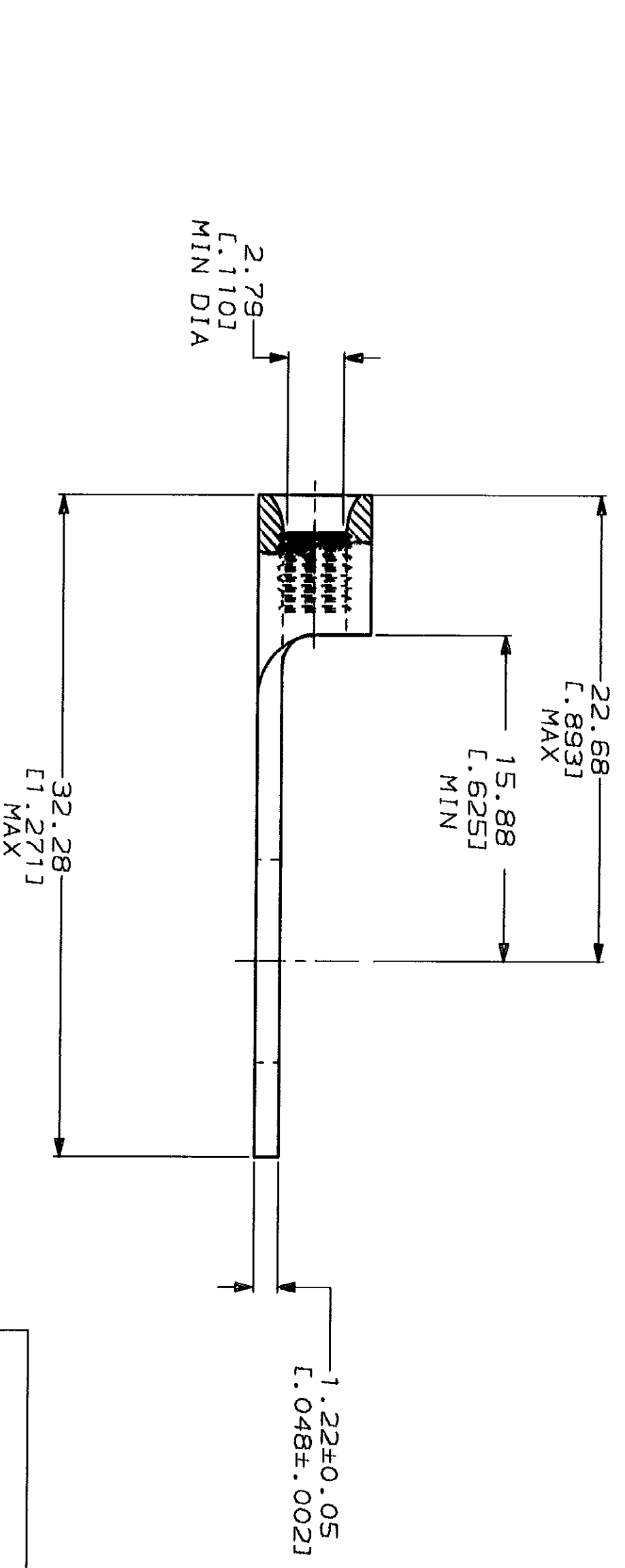
LOC	QTY	REV	DESCRIPTION	DATE	APPD
G	14	A	REV & REDRAWN PER 0720-0008-93	2-1-93	YB DAP

**METPRIG**  
DIMENSIONS LISTED IN MM [ INCHES ]



<b>AMP</b> WIRE RANGE	<b>UL</b> Listed E13288
16-14HD AWG STRANDED	16-14HD AWG STRANDED
<b>LR7189</b> Certified	MILITARY P/N AND CLASS
NOT CERTIFIED	NOT APPLICABLE

△ STAMP AMP 16-14HD\* APPROX AS SHOWN



34830  
PART NO

**AMP INCORPORATED  
CUSTOMER SERVICE SYSTEMS**

FOR ADDITIONAL PRODUCT INFORMATION OR COPIES OF DRAWINGS AND TECHNICAL DOCUMENTS  
PRODUCT INFORMATION CENTER  
1-800-522-6752

FOR APPLICATION TOOLING INFORMATION  
TOOLING ASSISTANCE CENTER  
1-800-722-1111

FOR ORDER ENTRY  
1-800-526-5142

MAX RECOMMENDED OPERATING TEMPERATURE: 170°C MAX  
VOLTAGE RATING: NOT APPLICABLE  
WIRE CROSS SECTIONAL AREA RANGE: 1.04-2.62mm<sup>2</sup> [2,050-5,180] CIR MILS STRANDED

DO NOT SCALE PRINT. UNLESS SPECIFIED DIMENSIONS IN mm - FINISHES - TOLERANCES ON: 1 PLG DEC ± 2 PLG DEC ± 3 PLG DEC ± ANGLES

FINISH: TIN PLATE  
0.00254 [0.00100] MIN THK PER MIL-T-10727

AMP 1471-6 REV 3-92

DR 2-1-93 TA BRINKMAN	NAME <b>AMP</b> AMP Incorporated Harrisburg, PA 17105-3608
CHK 2-1-93 DA PATTERSON	TERMINAL, RING TONGUE, HEAVY DUTY, BUDGET
APPD 2-1-93 DE MILLER	SIZE CAGE CODE 00779 DRAWING NO G-34830
APPD 2-1-93 JL HECKLEY	SCALE 4:1
PRODUCT SPEC	SHEET 1 OF 1
APPLICATION SPEC	
WEIGHT	