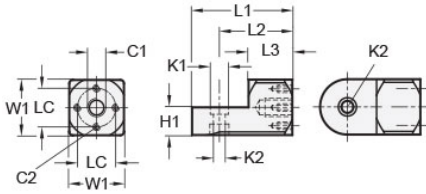




## MT10:12-SWMB-M8-A

Ruland Swivel Mounting Block, Width/Height 20mm, Length 38mm, Aluminum



### Description

Ruland MT10:12-SWMB-M8-A is an swivel mounting block with a M8 center thread, M4 cross threads, 10mm base height, 8.5mm recess diameter, 20mm width/height, and 38mm overall length. It is made of aluminum with a matte tumbled finish. Swivel mounting blocks are primarily designed to mount sensor and mounting brackets with the same width/height. In addition, this part can be combined with swivel and t-swivel clamp joints with the same width/height to make articulated swivel clamp mounting joints. Adjustable lever clamping kits with the same width/height can be attached to the swivel mounting block.

### Product Specifications

|                                  |              |   |                       |
|----------------------------------|--------------|---|-----------------------|
| <b>Center Thread C1</b>          | M8           | <b>Cross Thread C2</b>                  | M4 x 4                |
| <b>Counterbore 1 Diameter K1</b> | 8.5 mm       | <b>Counterbore 2 Diameter K2</b>        | 5.5 mm                |
| <b>Width &amp; Height W1</b>     | 20 mm        | <b>Base Height H1</b>                   | 10 mm                 |
| <b>Center To Center LC</b>       | 14 mm        | <b>Edge To Center Of Counterbore L2</b> | 28 mm                 |
| <b>Overall Length L1</b>         | 38 mm        | <b>Hub Length LH</b>                    | 17 mm                 |
| <b>Material Specification</b>    | Aluminum     | <b>Manufacturer</b>                     | JW Winco/ Otto Ganter |
| <b>Country of Origin</b>         | Germany      | <b>Weight (lbs)</b>                     | 0.051400              |
| <b>UPC</b>                       | 634529230039 | <b>Tariff Code</b>                      | 7609.00.0000          |
| <b>UNSPC</b>                     | 31162908     |   |                       |