

ITEM	PART#	DESCRIPTION	QTY	UOM
A, B	510470700	PicoBlade1.25 Plug Hsg 7P	2	PC
C	501338000	PicoBlade1.25 Crimp Plug Term Chain	14	PC
D	--	Blank label 12.7x35.5mm (WHT:12.7mm) HF	1	PC

FROM	TO	DESCRIPTION	COLOR
A1	B7	CABLE 28 AWG UL 1061 BLACK	BLACK
A2	B6	CABLE 28 AWG UL 1061 BLACK	BLACK
A3	B5	CABLE 28 AWG UL 1061 BLACK	BLACK
A4	B4	CABLE 28 AWG UL 1061 BLACK	BLACK
A5	B3	CABLE 28 AWG UL 1061 BLACK	BLACK
A6	B2	CABLE 28 AWG UL 1061 BLACK	BLACK
A7	B1	CABLE 28 AWG UL 1061 BLACK	BLACK

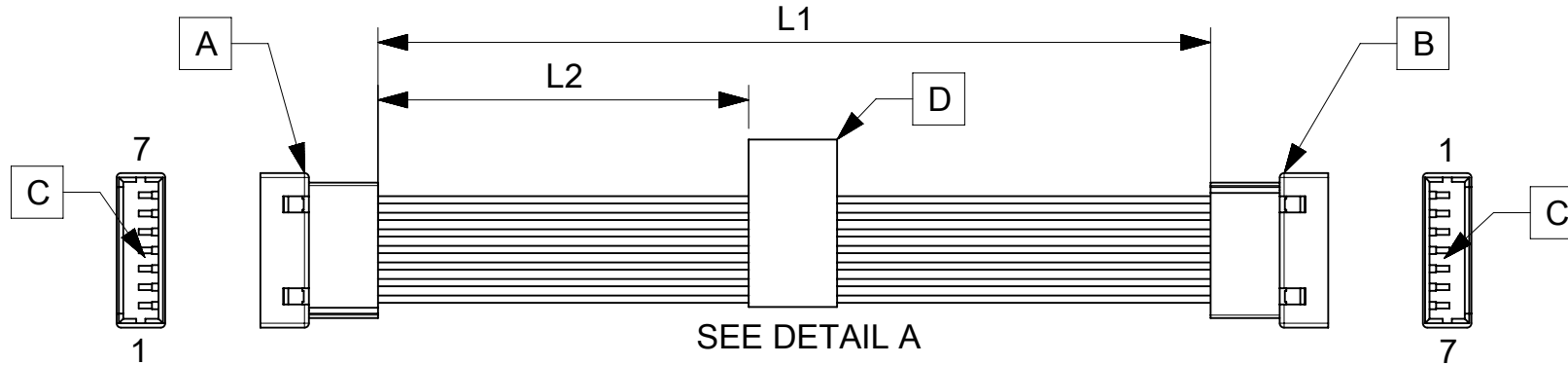
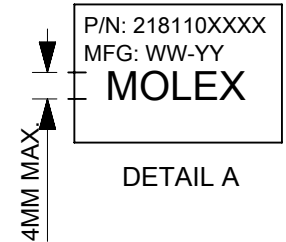


TABLE			
PART NUMBER	L1	L2 (REF)	TITLE
2181100700	75±5	30	7 CIRCUIT PICOBLADE P:P CABLE 75MM
2181100701	150±6	70	7 CIRCUIT PICOBLADE P:P CABLE 150MM
2181100702	225±6	105	7 CIRCUIT PICOBLADE P:P CABLE 225MM
2181100703	300±8	145	7 CIRCUIT PICOBLADE P:P CABLE 300MM
2181100704	425±8	205	7 CIRCUIT PICOBLADE P:P CABLE 425MM



NOTES

1. Cable assembly to be tested 100% for continuity and polarity.
2. Connector view shown is from mating side.
3. Label text must be 2mm max. in height with Arial font.
4. Label must be wrapped in flag type on the cables.

FUNCTIONAL SYMBOLS $\frac{E}{A} = 0$ $\frac{E}{E} = 0$ $\frac{E}{P} = 0$ DIVISIONAL SYMBOLS	THIS DRAWING CONTAINS INFORMATION THAT IS PROPRIETARY TO MOLEX ELECTRONIC TECHNOLOGIES, LLC AND SHOULD NOT BE USED WITHOUT WRITTEN PERMISSION		CURRENT REV DESC:			
	DIMENSION UNITS: mm SCALE: NTS	GENERAL TOLERANCES (UNLESS SPECIFIED) ANGULAR TOL: ± °		EC NO: 659320 DRWN: ARAJU 2021/03/04 CHK'D: RDESAI01 2021/03/26 APPR: RDESAI01 2021/03/26		
	4 PLACES ± 3 PLACES ± 2 PLACES ± 1 PLACE ± 0 PLACES ±	INITIAL REVISION: DRWN: ARAJU 2021/03/04 APPR: RDESAI01 2021/03/26		PRODUCT CUSTOMER DRAWING		
	DRAFT WHERE APPLICABLE MUST REMAIN WITHIN DIMENSIONS	THIRD ANGLE PROJECTION	DRAWING: A4-SIZE	SERIES: 218110	DOCUMENT NUMBER: 2181100700	DOC TYPE: PSD DOC PART: 000 REVISION: A
MATERIAL NUMBER: SEE TABLE		CUSTOMER: GENERAL MARKET		SHEET NUMBER: 1 OF 1		

REVISION			
DATE	REV	DESCRIPTION	CHANGER
04/03/2021	A	INITIAL RELEASE	ARAJU

DOCUMENT STATUS	P1	RELEASE DATE	2021/03/26	04:03:37
-----------------	----	--------------	------------	----------