

THIS DRAWING IS UNPUBLISHED.

RELEASED FOR PUBLICATION

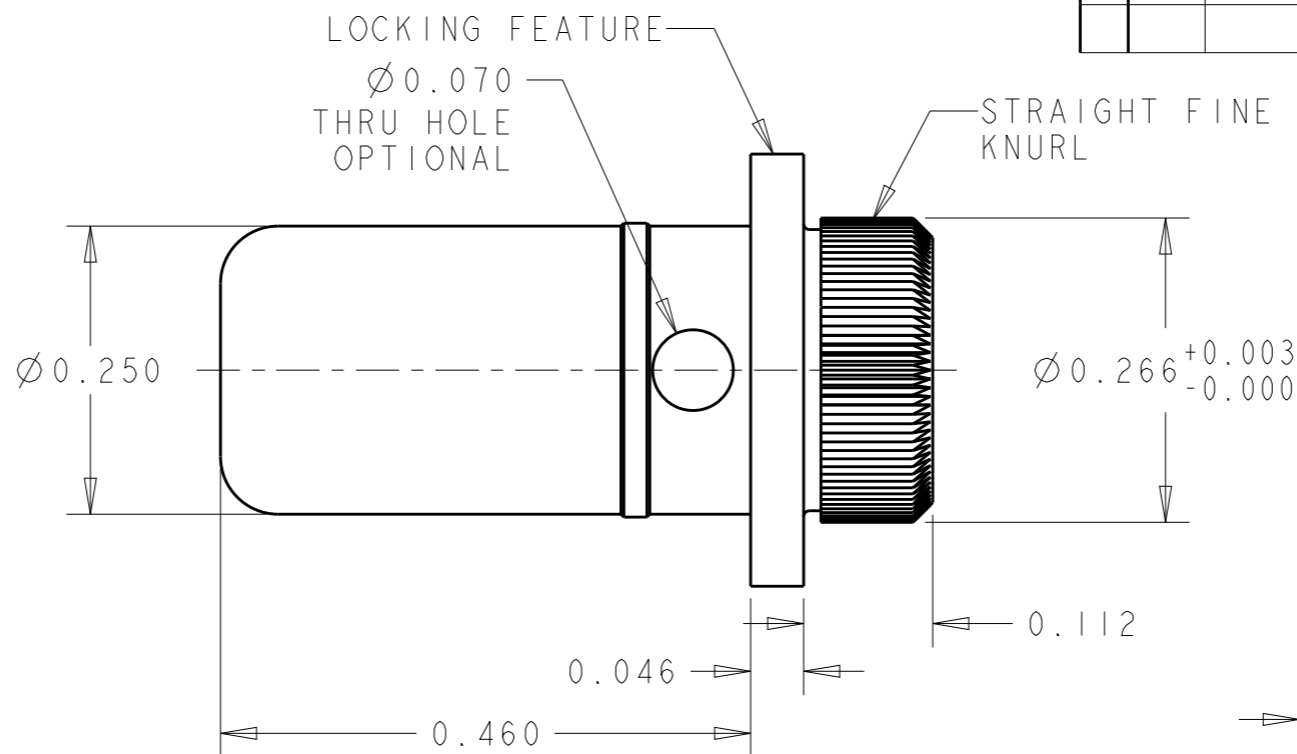
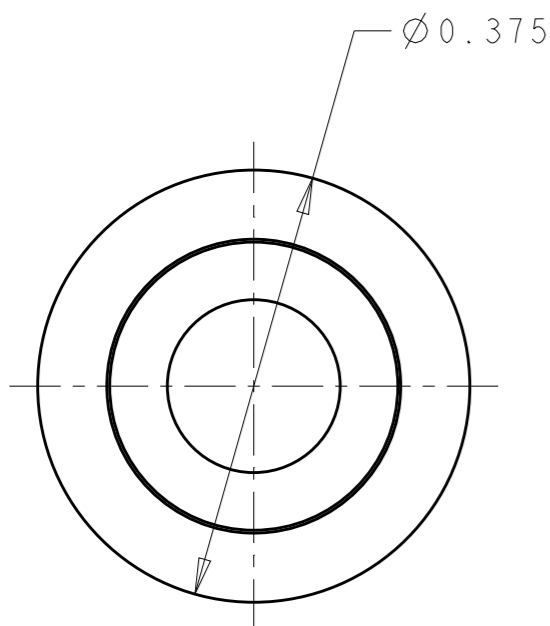
20

© COPYRIGHT 20 BY -

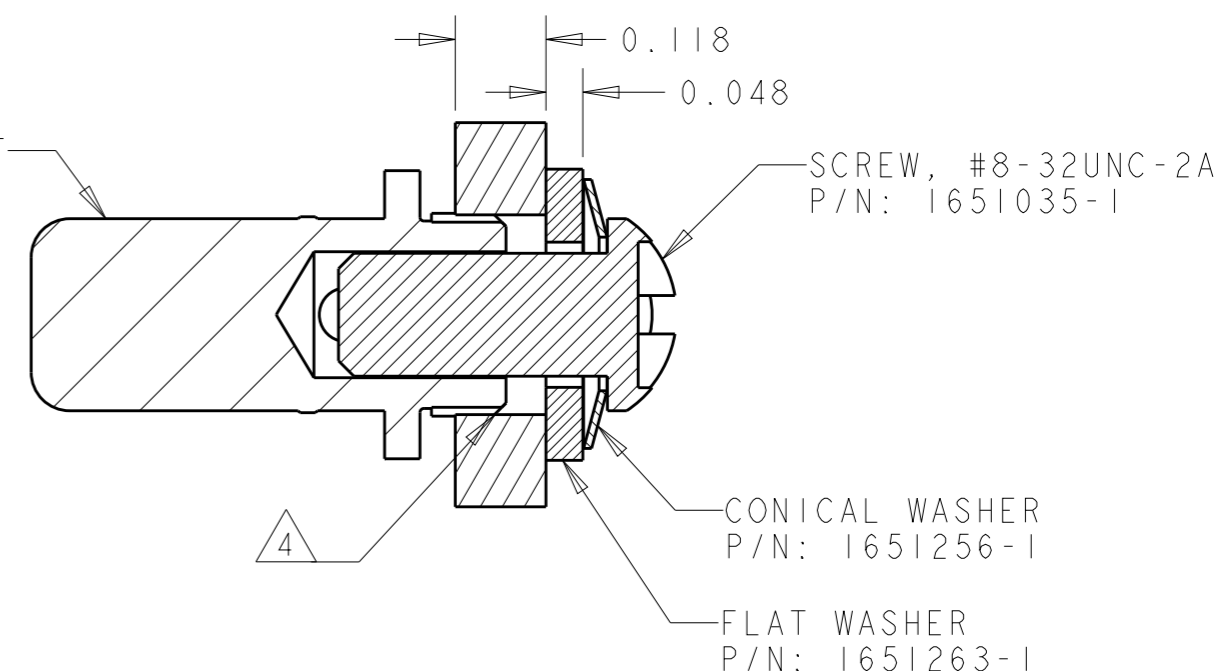
ALL RIGHTS RESERVED.

REVISIONS

P	LTR	DESCRIPTION	DATE	DWN	APVD
	A	RELEASED	01DEC2011	RG	DO
	B	REVISED PER ECR-16-001405.	01FEB2016	RS	SZ



PIN CONTACT
P/N: 2085957-1



ASSEMBLY DETAIL


1. ITEMS PROVIDED TO THIS SPECIFICATION SHALL BE IDENTIFIED ON THE CONTAINER WITH THE FOLLOWING INFORMATION:
PART NUMBER & DATE CODE OF MANUFACTURE.

2 MATERIAL: PIN CONTACT: COPPER ALLOY
CONICAL WASHER: SPRING STEEL
SCREW & FLAT WASH.: STEEL

3 FINISH: PIN CONTACT: SILVER PLATE .000100 MIN THICK
OVER NICKEL .000050 MIN THICK.
SCREW: NICKEL PLATE
CONICAL & FLAT WASH.: NICKEL PLATE

4 RECOMMENDED HOLE DIAMETER AFTER PLATING:
Ø .260+.003/.001.

2085958-1
PART NUMBER

THIS DRAWING IS A CONTROLLED DOCUMENT.		DWN R.GRZYBOWSKI 30NOV2011	 TE Connectivity	
DIMENSIONS: INCHES		CHK D.ORRIS 30NOV2011		
TOLERANCES UNLESS OTHERWISE SPECIFIED:		APVD D.ORRIS 30NOV2011	NAME PIN CONTACT, SIZ4 #4, SCREW MOUNT, LOCKING STYLE, PRESS FIT	
0 PLC ±- 1 PLC ±- 2 PLC ±.02 3 PLC ±.010 4 PLC ±- ANGLES ±.5		PRODUCT SPEC 108-64019	SIZE A3	
MATERIAL		APPLICATION SPEC 114-64005	CAGE CODE 00779	DRAWING NO C-2085958
FINISH		WEIGHT -	RESTRICTED TO -	
2		CUSTOMER DRAWING		SCALE 1:1
3		SHEET 1 OF 1		REV B