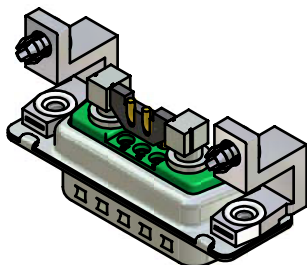


NOTES:

1. METALSHELLS: STEEL; min. 315µin TIN over 40-80µin NICKEL
2. INSULATORS: HIGH TEMPERATURE PLASTIC UL 94 V-0; GREEN
3. HIGH POWER CONTACTS: COPPER ALLOY; min. 35A/pin @30°C TEMPERATURE RISE
PLATING MATING AREA: 30µin HARD GOLD over min. 50µin NICKEL
PLATING TERMINATION SIDE: 160-240µin TIN over 80µin NICKEL
MALE CONTACT ON POS. A1 and A2
4. SIGNAL CONTACTS: COPPER ALLOY; 5A nominal
PLATING MATING AREA: 30µin HARD GOLD over min. 50µin NICKEL
MALE CONTACTS ON POS. 1 and 2, NO CONTACTS ON POS. 3, 4, 5
5. METAL BRACKET: ZINC DIE CAST; 300µin COPPER/40-120µin NICKEL/120-200µin TIN
6. THREADED INSERT: COPPER ALLOY; min. 200µin TIN over 80µin NICKEL
7. FIXING PLATE: HIGH TEMPERATURE PLASTIC UL 94 V-0, BLACK
8. PCB-SNAP: COPPER ALLOY; min. 200µin TIN over 80µin NICKEL
PCB-HOLE: $\varnothing 3,1 \pm 0,1$ mm; PCB-THICKNESS: 1,6mm
9. MAXIMUM TORQUE VALUE FOR THREAD: 6" LBS
10. CONNECTOR IS PART MARKED: 13-000081 CONEC ABC

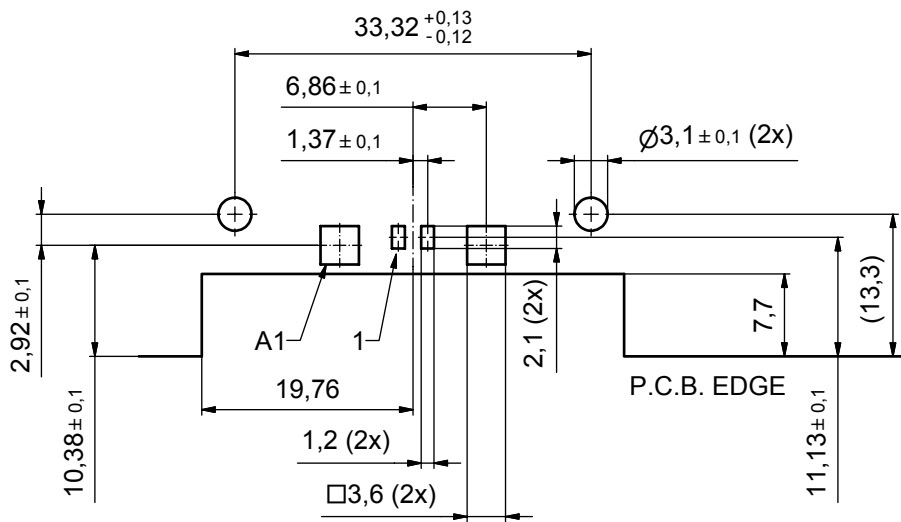


Directive 2002/95/EC
„RoHS“
Compliant

| | |
|---|--------|
| APPROVAL # FREIGABE # DEBLOCAGE # AUTORIZACION # APPROVAL | |
| CUSTOMER APPROVAL DATE: | |
| NAME: | TITLE: |
| COMPANY NAME: | |
| APPROVAL # FREIGABE # DEBLOCAGE # AUTORIZACION # APPROVAL | |

| | | | | | | | | |
|--|-------------------|--|------------------|---|---------------------|------------|---|--|
| THIS DRAWING MAY NOT BE COPIED OR REPRODUCED IN ANY WAY, AND MAY NOT BE PASSED ON TO A THIRD PARTY WITHOUT WRITTEN PERMISSION. OWNERSHIP AND COPYRIGHT OF CONEC GmbH | finish: see notes | | | tolerance | | dim. in mm | scale: 2:1 | |
| | | | | | | | material: see notes | |
| | | | | date | | | title: SMD CONNECTOR 90° Male Single-Port threaded insert, metal bracket, fixing plate and snap | |
| | | | | name | | | | |
| | | | | drawn: 03.07.07 appd.: 03.07.07 norm: d-old: | | | | |
| | | | a Origin | | dwg no: Inventor 10 | | DIN-A3 | |
| | | | rev. description | | date | | part no: 13-000081 | |





| | |
|---|--------|
| APPROVAL # FREIGABE # DEBLOCAGE # AUTORIZACION # APPROVAL | |
| CUSTOMER APPROVAL DATE: | |
| NAME: | TITLE: |
| COMPANY NAME: | |
| APPROVAL # FREIGABE # DEBLOCAGE # AUTORIZACION # APPROVAL | |

| | | | |
|--|----------------|--------------|------|
| THIS DRAWING MAY NOT BE COPIED OR REPRODUCED IN ANY WAY, AND MAY NOT BE PASSED ON TO A THIRD PARTY WITHOUT WRITTEN PERMISSION. OWNERSHIP AND COPYRIGHT OF CONEC GmbH | | | |
| DO NOT ALTER CAD DRAWING BY HAND | | | |
| finish: | see sheet 1 | | |
| tolerance | | | |
| | date | name | |
| | drawn 03.07.07 | Lehmenkühler | |
| | appd. 03.07.07 | Fischer | |
| | norm | | |
| | d-old | | |
| a | Origin | | |
| rev. | description | date | name |



| | | |
|-----------|---|--------|
| scale: | 2:1 | |
| material: | see sheet 1 | |
| title: | P.C.B. LAYOUT | |
| | SMD Connector 90° Male Single-Port | |
| | threaded insert, metal bracket, fixing-plate and snap | |
| dwg no: | Inventor 10 | DIN-A3 |
| | 13K1A2096 | sh: 2 |
| part no: | see sheet 1 | |